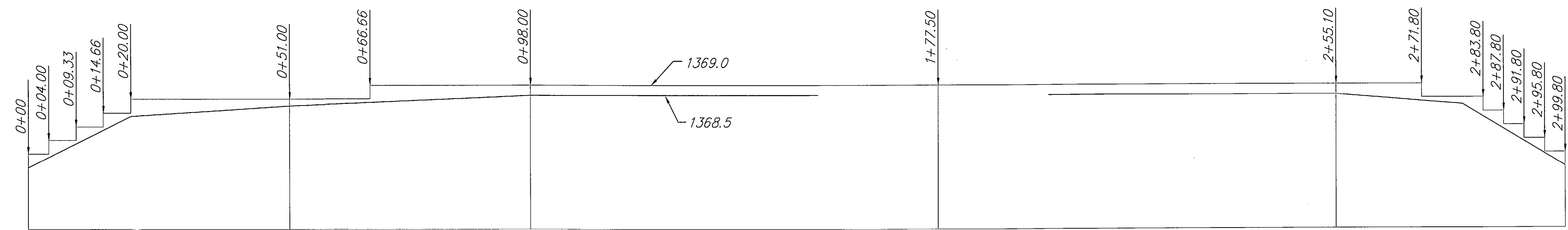
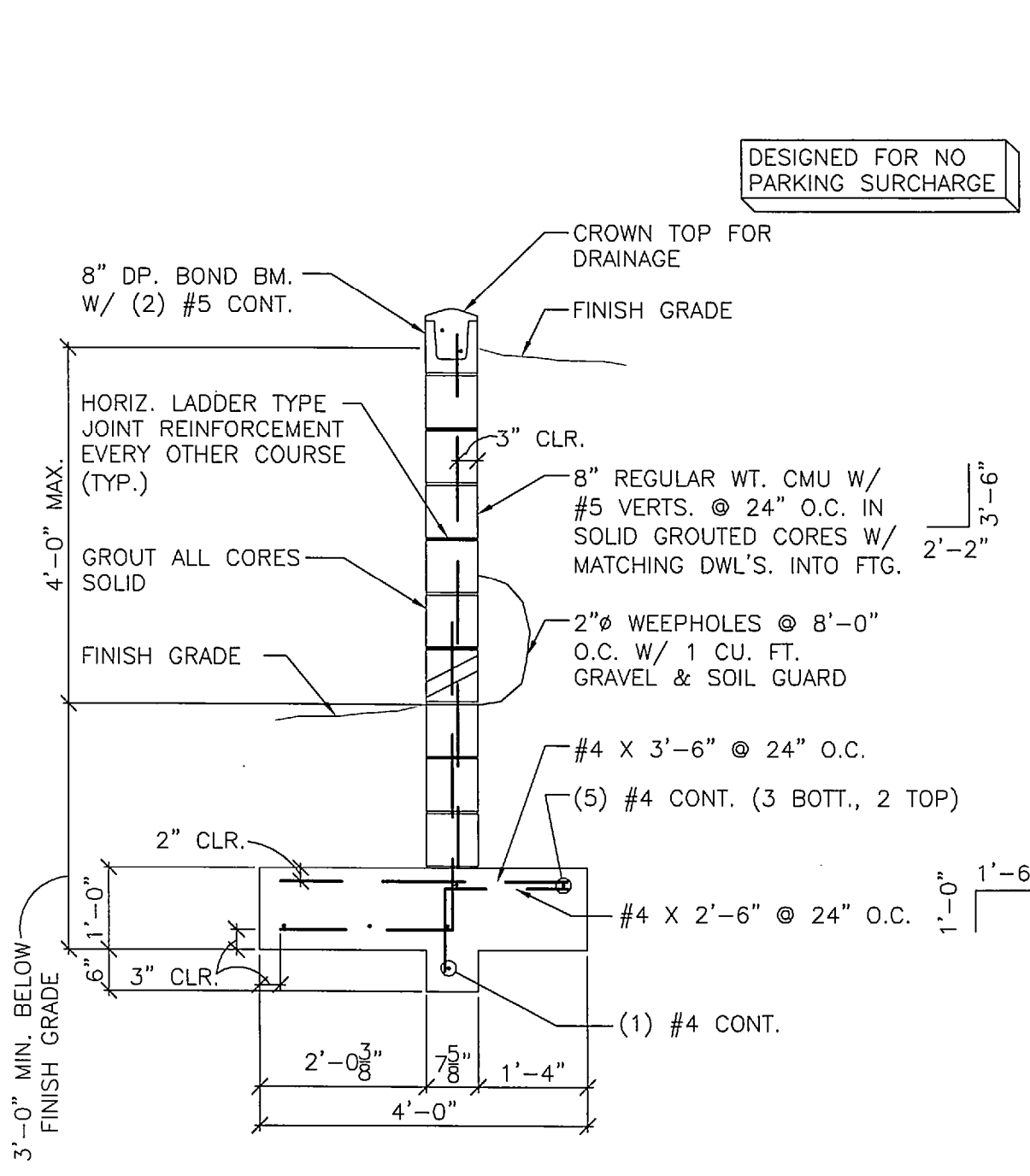


NORTH FOOTING & FOUNDATION PLAN
3/32 = 1'-0"

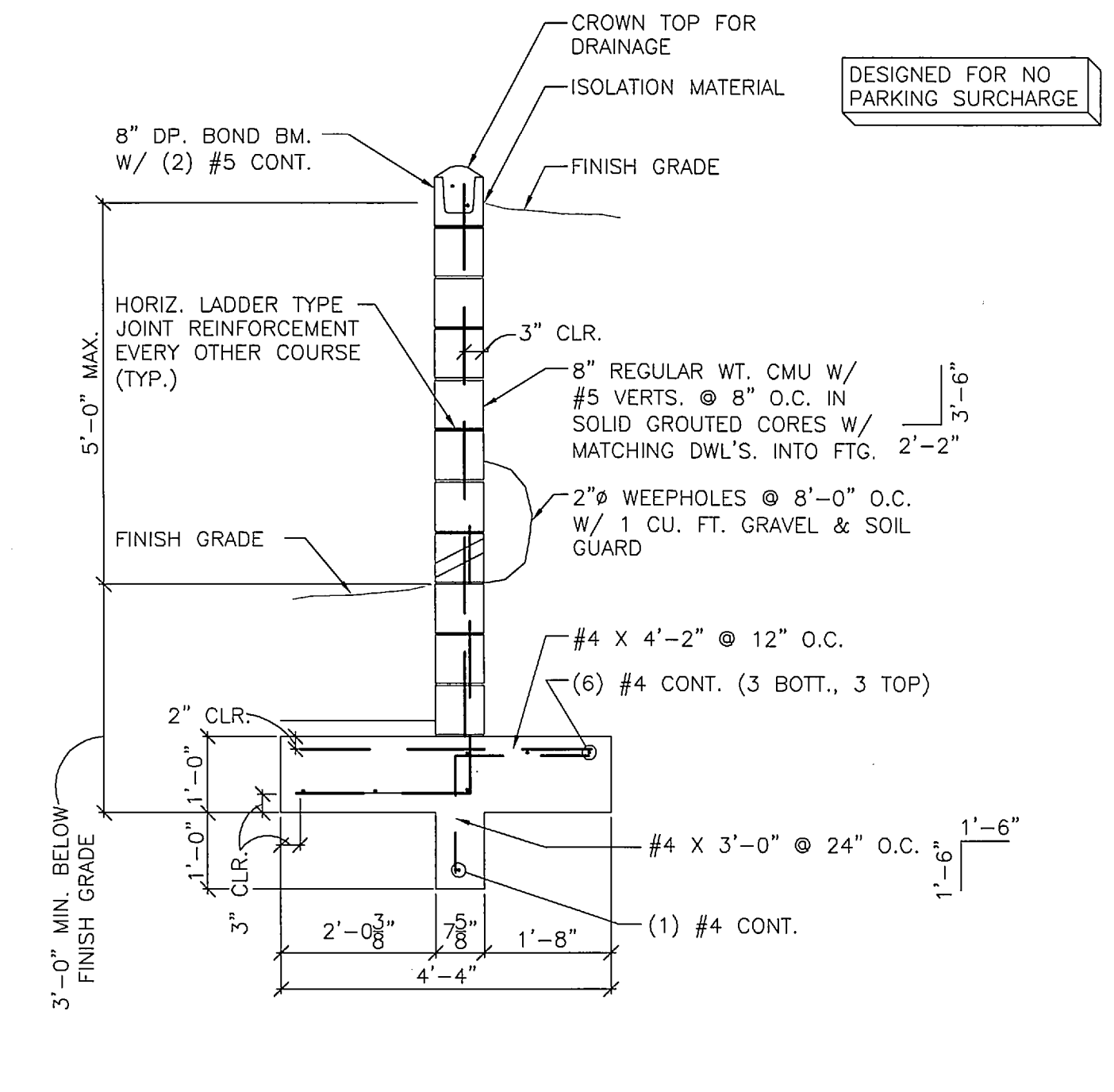


WALL PROFILE



A SECTION @ 4'-0" RETAINING WALL
1/2" = 1'-0"

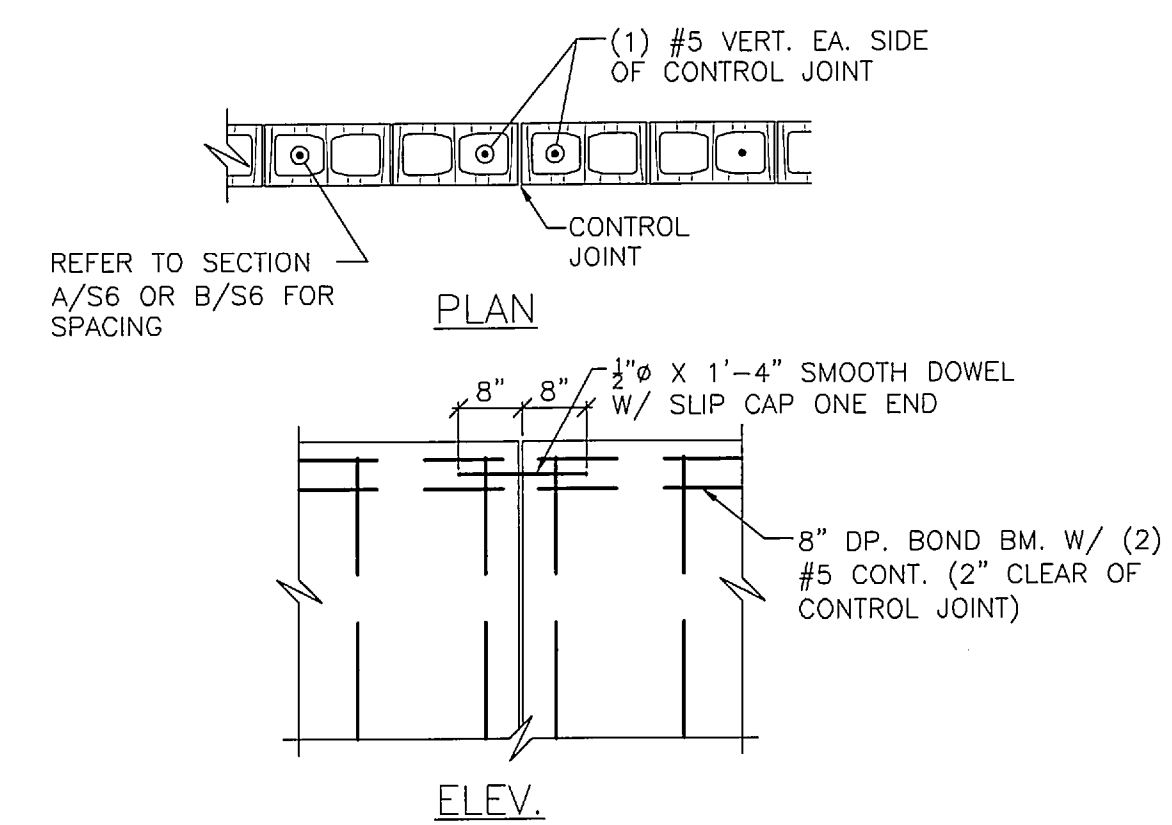
NOTES: 1. REFER TO 1/S6 FOR MASONRY CONTROL JOINT DETAIL, SPACE AT 24'-0" O.C. (MAX.)



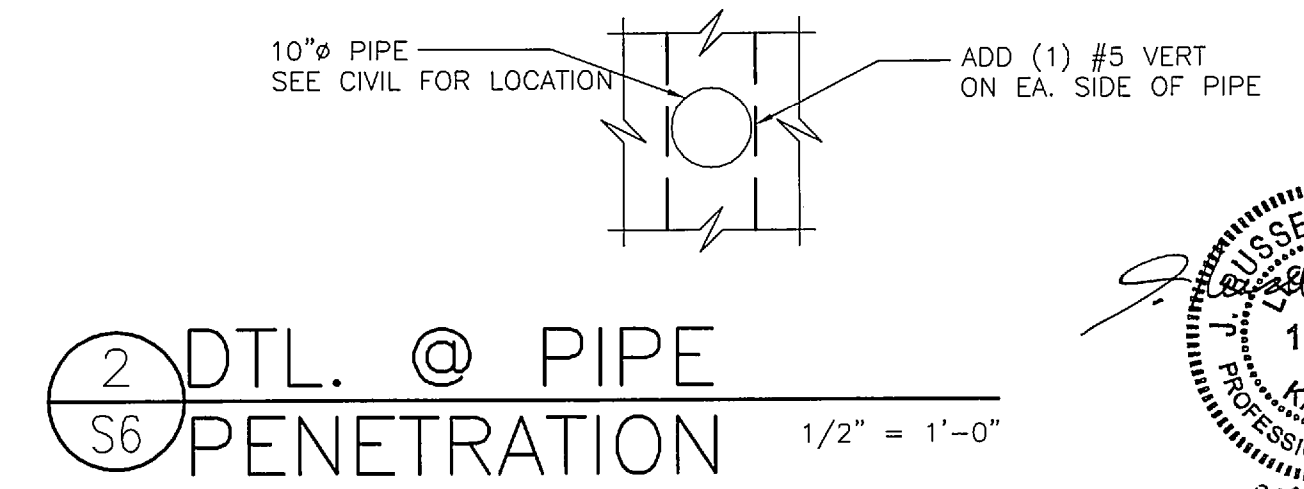
B SECTION @ 5'-0" RETAINING WALL
1/2" = 1'-0"

NOTES: 1. REFER TO 1/S6 FOR MASONRY CONTROL JOINT DETAIL, SPACE AT 24'-0" O.C. (MAX.)

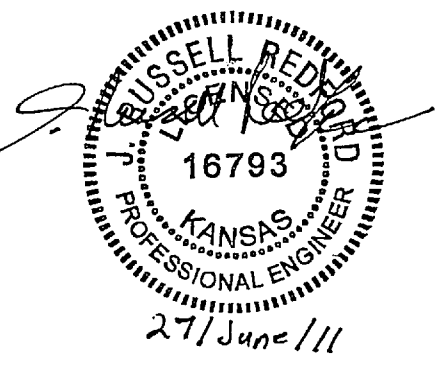
- STRUCTURAL GENERAL NOTES:
1. CODE: 2006 IBC
 2. SOIL BEARING: 3000 PSF (GEOTECHNICAL REPORT #01115110 BY TERRACON DATED MAY 11, 2011)
 3. MIN. EXT. FTG. DEPTH: 3'-0"
 4. CONCRETE: 3000 PSI @ 28 DAYS PER A.C.I. ASTM A515 GRADE 60
 5. REBAR: REGULAR WEIGHT (F_y = 2000 PSI)
 6. MASONRY: 2500 PSI @ 28 DAYS PER ASTM 476 (MORTAR TYPE S)
 7. GROUT: 32 INCHES FOR #5 VERTICALS
 8. LAP LENGTH: 32 INCHES FOR #5 VERTICALS
 9. IF CONDITIONS DIFFER, CONTACT ENGINEER IMMEDIATELY.



1 MASONRY CONTROL JOINT @ 24'-0" O.C. (MAX.)
1/2" = 1'-0"



2 DTL. @ PIPE PENETRATION
1/2" = 1'-0"



**REEDS COVE MEDICAL CAMPUS
RETAINING WALL DETAILS
WICHITA, KANSAS**

	Ruggles & Bohm, P.A. Engineering, Surveying, Land Planning		DESIGN TD	SHEET OF
	924 North Main Wichita, Kansas 67203 www.rbkansas.com		(316) 264-8008 (316) 264-4621 fax E-mail: info@rbkansas.com	
DRAWING FILE	PROJECT NUMBER	DATE	06-27-11	