

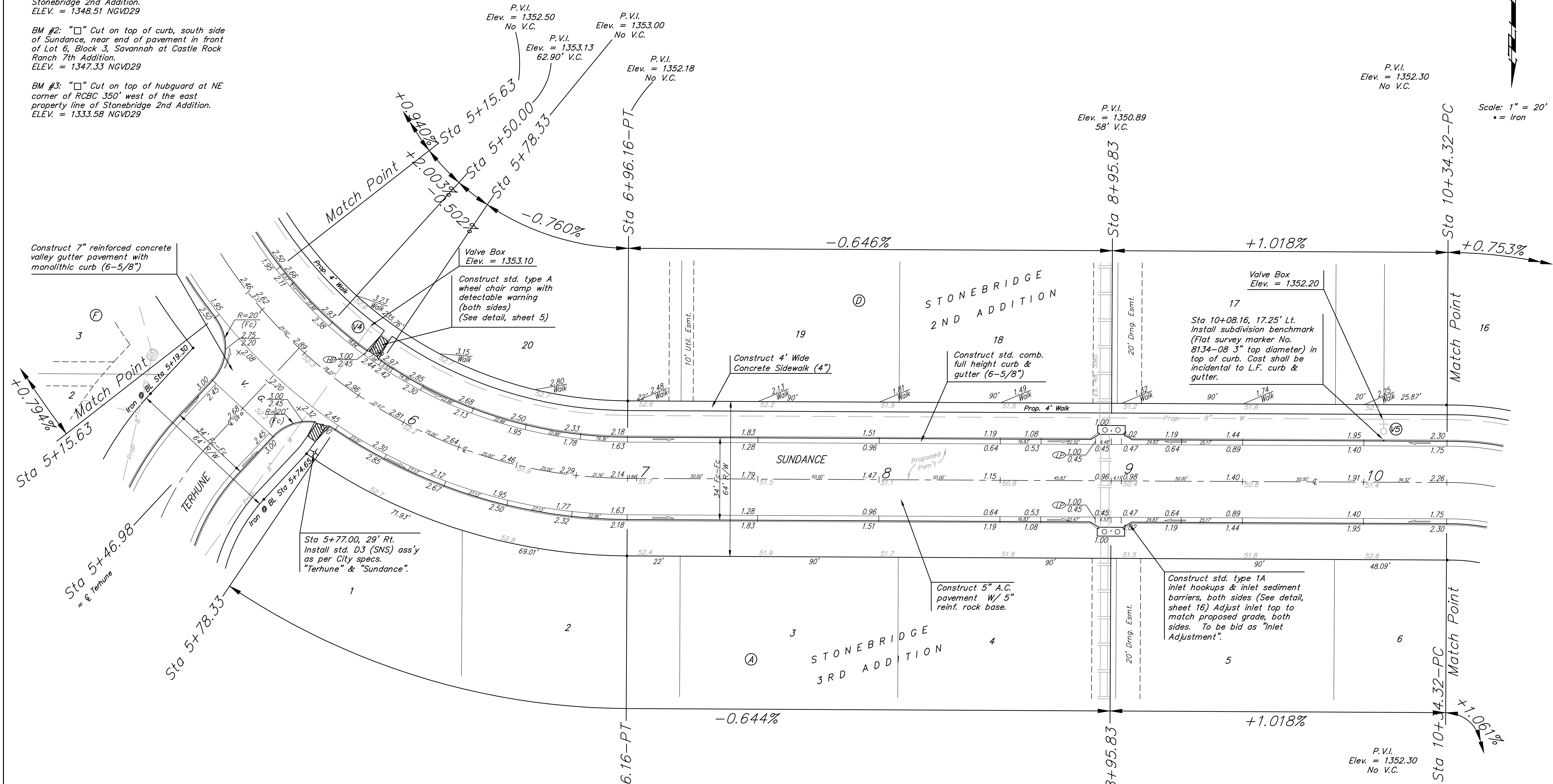
BENCHMARKS:
 BM #1: "□" Cut on top of curb, east side of Ridgehurst, adjacent to common front lot corner of Lots 6 & 7, Block E, Stonebridge 2nd Addition.
 ELEV. = 1348.51 NGVD29

BM #2: "□" Cut on top of curb, south side of Sundance, near end of pavement in front of Lot 6, Block 3, Savannah at Castle Rock Ranch 7th Addition.
 ELEV. = 1347.33 NGVD29

BM #3: "□" Cut on top of hubguard at NE corner of RCBC 350' west of the east property line of Stonebridge 2nd Addition.
 ELEV. = 1333.58 NGVD29

P.V.I.
 Elev. = 1352.30
 No V.C.

Scale: 1" = 20'
 • = Iron



P.V.I.
 Elev. = 1352.30
 No V.C.

P.V.I.
 Elev. = 1350.89
 58' V.C.

	Stonebridge 2nd PH. II & 3rd Addition SUNDANCE STA 5+15.63 TO STA 10+34.32	
	<small>Baughman Company, P.A. 515 Ellis St. Wichita, KS 67211 P 316-2637711 F 316-2634149 ENGINEERING SURVEYING PLANNING LANDSCAPE ARCHITECTURE</small>	
PROJECT NUMBER 47284592	DESIGN TJW	DRAWN TMS
REVISIONS:	APPROVED NBW	DATE 07/11
SCALE Noted		SHEET 7 OF 28
<small>06-14 Str1.dwg</small>		<small>06-08-E635</small>