

BENCHMARKS:

BM #1: "□" Cut on top of curb, east side of Ridgehurst, adjacent to common front lot corner of Lots 6 & 7, Block E, Stonebridge 2nd Addition.
ELEV. = 1348.51 NGVD29

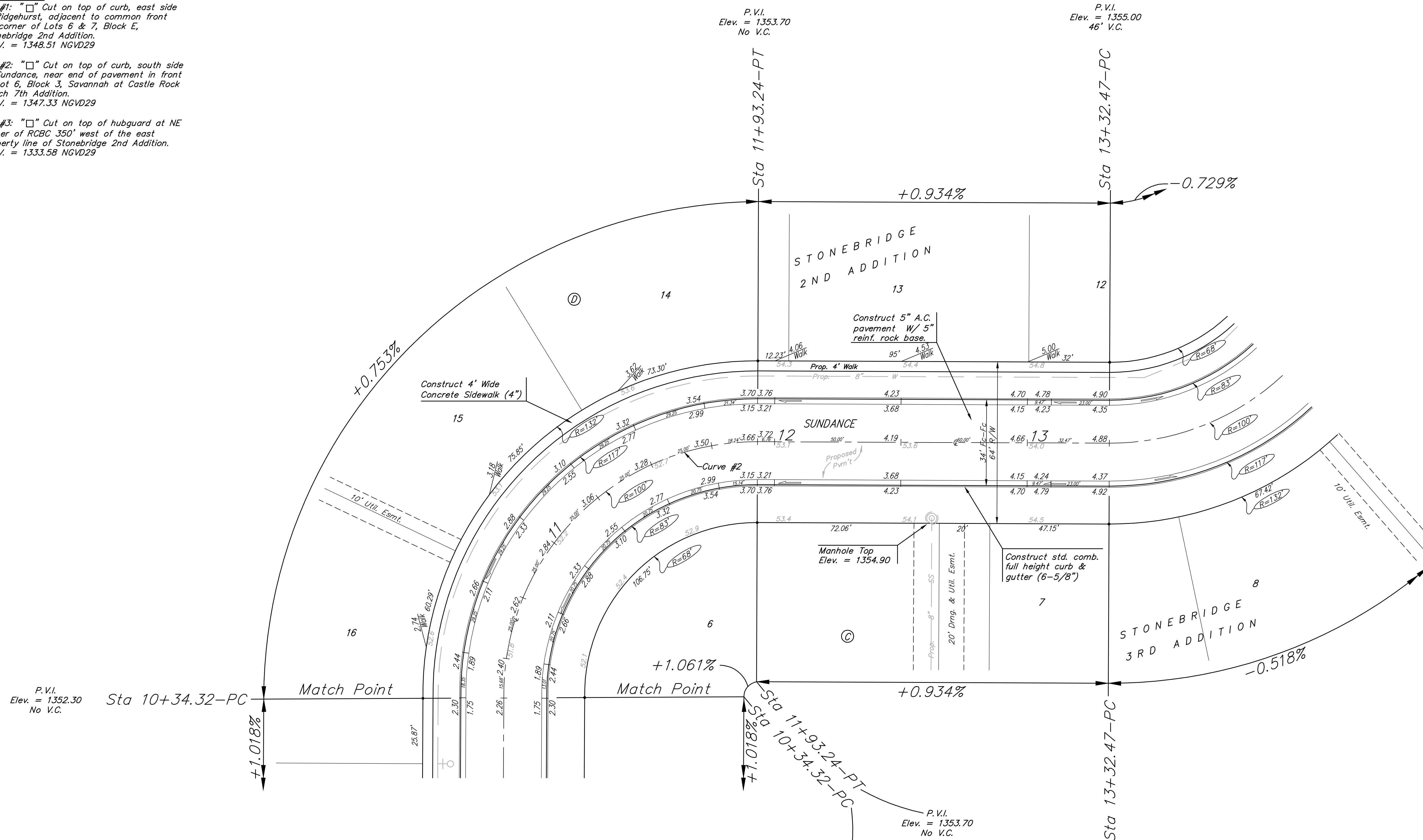
BM #2: "□" Cut on top of curb, south side of Sundance, near end of pavement in front of Lot 6, Block 3, Savannah at Castle Rock Ranch 7th Addition.
ELEV. = 1347.33 NGVD29

BM #3: "□" Cut on top of hubguard at NE corner of RCBC 350' west of the east property line of Stonebridge 2nd Addition.
ELEV. = 1333.58 NGVD29

P.V.I.
Elev. = 1353.70
No V.C.

P.V.I.
Elev. = 1355.00
46' V.C.

Scale: 1" = 20'
• = Iron



Curve #2
Curve Data Based on Centerline

Rad. = 100' Delta = 91°03'16" Tangent = 101.86'
Arc = 158.92' L.C. = 142.72' Def/Ft. = 17.18873 Min.

Station	Arc	FACE CHORD LENGTHS		Defl.	T. Defl.
		8 Lt.	8 Rt.		
10+34.32	-	-	-	0°00'00"	0°00'00"
10+50.00	15.68'	19.58'	11.75'	4°29'31"	4°29'31"
10+75.00	25.00'	31.17'	18.70'	7°09'43"	11°39'14"
11+00.00	25.00'	31.17'	18.70'	7°09'43"	18°48'57"
11+25.00	25.00'	31.17'	18.70'	7°09'43"	25°58'40"
11+50.00	25.00'	31.17'	18.70'	7°09'43"	33°08'23"
11+75.00	25.00'	31.17'	18.70'	7°09'43"	40°18'06"
11+93.24	18.24'	22.77'	13.66'	5°13'51"	45°31'38"

	Stonebridge 2nd PH. II & 3rd Addition SUNDANCE STA 10+34.32 TO STA 13+55.00	
	Baughman Company, P.A. 515 Ellis St. Wilkins, KS 67211 P 316-2627711 F 316-2624149 ENGINEERING SURVEYING PLANNING LANDSCAPE ARCHITECTURE	
PROJECT NUMBER 47284592	DESIGN TJW	DRAWN TMS
REVISIONS:	APPROVED NBW	DATE 07/11
SCALE Noted		SHEET 8 OF 28
06-14 Str1.dwg		06-08-E635