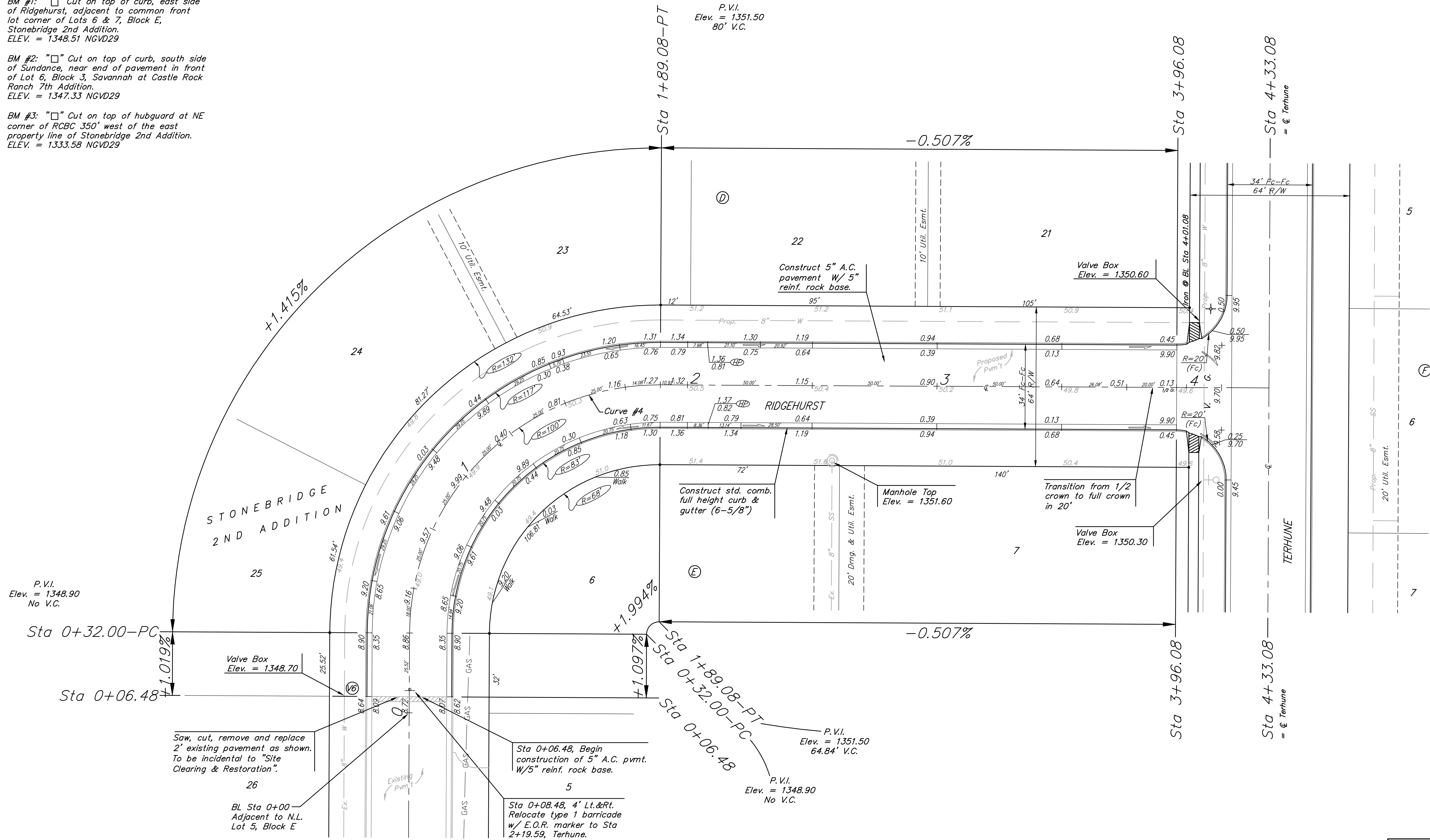
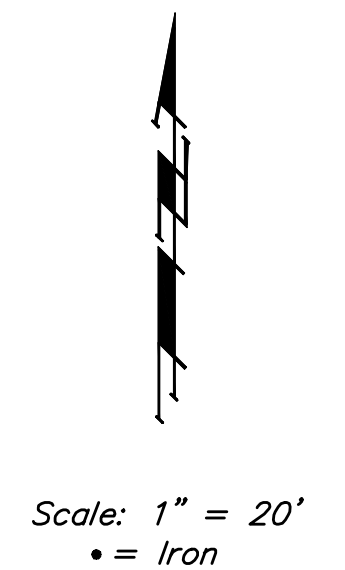


BENCHMARKS:

BM #1: "□" Cut on top of curb, east side of Ridgehurst, adjacent to common front lot corner of Lots 6 & 7, Block E, Stonebridge 2nd Addition.
ELEV. = 1348.51 NGVD29

BM #2: "□" Cut on top of curb, south side of Sundance, near end of pavement in front of Lot 6, Block 3, Savannah at Castle Rock Ranch 7th Addition.
ELEV. = 1347.33 NGVD29

BM #3: "□" Cut on top of hubguard at NE corner of RCBC 350' west of the east property line of Stonebridge 2nd Addition.
ELEV. = 1333.58 NGVD29



Curve #4
Curve Data Based on Centerline
Rad. = 100' Delta = 90°00'00" Tangent = 100.00'
Arc = 157.08' L.C. = 141.42' Del/Ft. = 17.18869 Min.

Station	Arc	FACE CHORD LENGTHS			
		8 Lt.	8 Rt.	Defl.	T. Defl.
0+32.00	18.00'	22.47'	13.48'	0°00'00"	0°00'00"
0+50.00	25.00'	31.17'	18.70'	5°09'24"	5°09'24"
0+75.00	25.00'	31.17'	18.70'	7°09'43"	12°19'07"
1+00.00	25.00'	31.17'	18.70'	7°09'43"	19°28'50"
1+25.00	25.00'	31.17'	18.70'	7°09'43"	26°38'33"
1+50.00	25.00'	31.17'	18.70'	7°09'43"	33°48'16"
1+75.00	25.00'	31.17'	18.70'	7°09'43"	40°57'59"
1+89.08	14.08'	17.59'	10.55'	4°02'01"	45°00'00"

Baughman

ENGINEERING | SURVEYING | PLANNING | LANDSCAPE ARCHITECTURE

Stonebridge 2nd PH. II & 3rd Addition

RIDGEHURST

STA 0+00 TO STA 4+33.08

<p>PROJECT NUMBER 47284592</p> <p>DESIGN TJW</p> <p>DRAWN TMS</p>	<p>APPROVED NBW</p> <p>DATE 07/11</p>
<p>REVISIONS:</p>	
<p>SCALE Noted</p> <p>SHEET 10 OF 28</p>	

06-14 Str1.dwg
06-08-E635