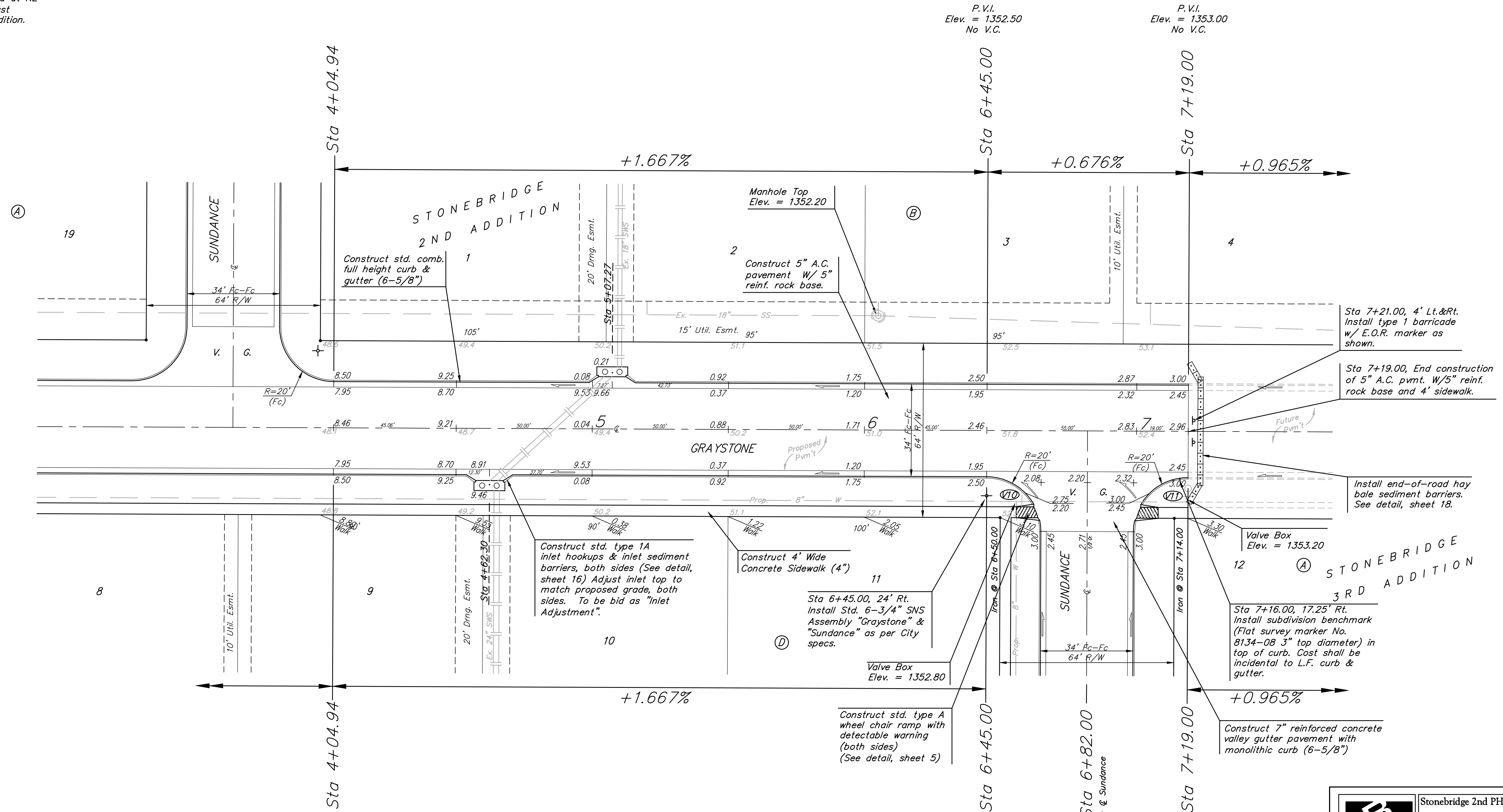
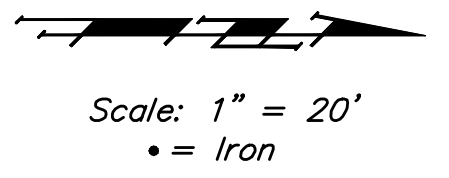


BENCHMARKS:

BM #1: "□" Cut on top of curb, east side of Ridgehurst, adjacent to common front lot corner of Lots 6 & 7, Block E, Stonebridge 2nd Addition.
ELEV. = 1348.51 NGVD29

BM #2: "□" Cut on top of curb, south side of Sundance, near end of pavement in front of Lot 6, Block 3, Savannah at Castle Rock Ranch 7th Addition.
ELEV. = 1347.33 NGVD29

BM #3: "□" Cut on top of hubguard at NE corner of RCBC 350' west of the east property line of Stonebridge 2nd Addition.
ELEV. = 1333.58 NGVD29



P.V.I.
Elev. = 1348.50
No V.C.

		Stonebridge 2nd PH. II & 3rd Addition GRAYSTONE STA 0+00 TO STA 5+99.94	
		Baughman Company, P.A. 515 Ella St. Wilkins, KS 67211 P 316-2637771 F 316-2634149 ENGINEERING SURVEYING PLANNING LANDSCAPE ARCHITECTURE	
PROJECT NUMBER 47284592		DESIGN TJW	DRAWN TMS
REVISIONS:		APPROVED NBW	DATE 07/11
SCALE Noted		SHEET 13 OF 28	
06-14 Str1.dwg		06-08-E635	