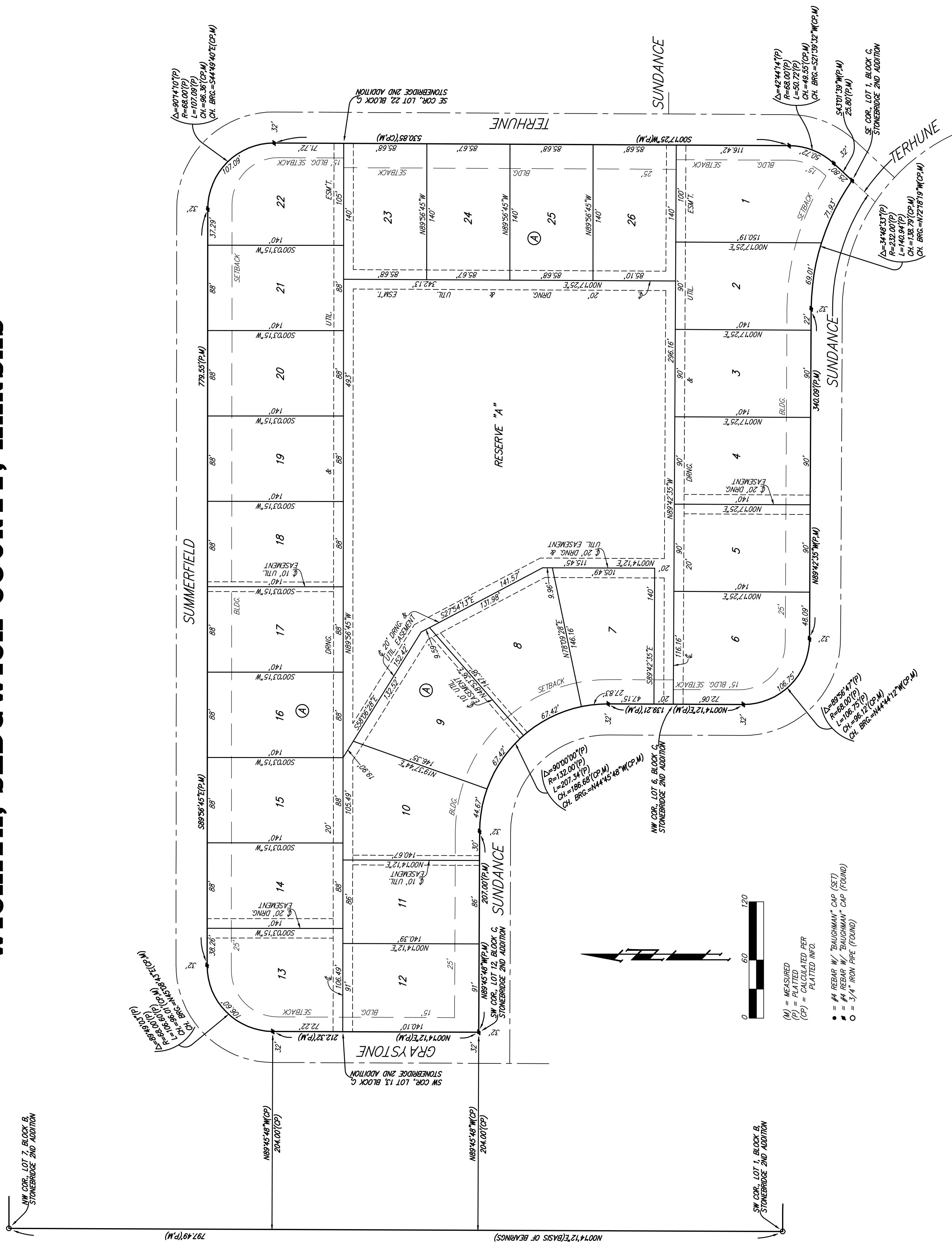


# STONEBRIDGE 3RD ADDITION WICHITA, SEDGWICK COUNTY, KANSAS



State of Kansas) SS We, **Baughman Company, P.A.**, Surveyors in and Sedgwick County) and state do hereby certify that we have surveyed and plotted "STONEBRIDGE 3RD ADDITION", Wichita, Sedgwick County, Kansas and that the accompanying plat is a true and correct exhibit of the property surveyed, described as and being a replat of all of Lots 1, 2, 3, 4, 5, 6, 7, 8, 9, 10, 11, 12, 13, 14, 15, 16, 17, 18, 19, 20, 21, 22, 23, 24, 25, 26, 27, 28, 29, 30, Block C, Stonebridge 2nd Addition, Sedgwick County, Kansas, together with all of Terhune Ct as dedicated in said Stonebridge 2nd Addition.

Existing public easements, setbacks, and dedications being vacated by virtue of K.S.A. 12-512(b). All being situated in the Southeast Quarter of Section 12, Township 27 South, Range 2 East of the Sixth Principal Meridian, Sedgwick County, Kansas

**Baughman Company, P.A.**

This plat of "STONEBRIDGE 3RD ADDITION", Wichita, Sedgwick County, Kansas has been submitted to and approved by the Wichita-Sedgwick County Metropolitan Area Planning Commission, Wichita, Kansas.

Dated this \_\_\_\_\_ day of \_\_\_\_\_, 2011.  
Wichita-Sedgwick County Metropolitan Area Planning Commission

\_\_\_\_\_, Chair  
**Debra Miller Stevens**  
\_\_\_\_\_, Secretary  
**John L. Schlegel**

This plat approved and all dedications shown hereon accepted by the City Council of the City of Wichita, Kansas, this \_\_\_\_\_ day of \_\_\_\_\_, 2011.

\_\_\_\_\_, Surveyor  
**Michael G. Conrey**

\_\_\_\_\_, Mayor  
**Carl Brewer**  
\_\_\_\_\_, City Clerk  
**Karen Sublett**

Know all men by these presents that we, the undersigned, have caused the land in the surveyors certificate to be platted into Lots, a Block, and a Reserve, to be known as "STONEBRIDGE 3RD ADDITION", Wichita, Sedgwick County, Kansas. The utility easements are hereby granted as indicated for the construction and maintenance of all public utilities. The drainage easements are hereby granted as indicated for drainage purposes. The drainage and utility easements are hereby granted as indicated for drainage purposes and for the construction and maintenance of all public utilities. Reserve "A" is hereby reserved for lakes, landscaping, open space, berms, sidewalks, drainage purposes, access purposes, and utilities as confined to easements. Reserve "A" shall be owned and maintained by the homeowners association for the addition. The Minimum Building Pad Elevations for the lowest opening to the structures shall be as indicated on the face of the plat.

**FLKS Land Development, LLC**  
a Kansas limited liability company

\_\_\_\_\_, Member  
**Steven R. Barrett**

State of Kansas) SS The foregoing instrument acknowledged before Sedgwick County) me, this \_\_\_\_\_ day of \_\_\_\_\_, 2011, by **Steven R. Barrett**, Member of **FLKS Land Development, LLC**, a Kansas limited liability company, on behalf of the limited liability company.

\_\_\_\_\_, Notary Public  
My App't. Exp. \_\_\_\_\_

LOT	BLOCK	ELEVATION
2-5	A	1345.0 1345.48
7-10	A	1345.0 1345.48
15-21	A	1345.0 1345.48
22-26	A	1345.0 1345.48

BENCHMARK: 1/4" OF CURB SOUTH SIDE OF SUNDANCE AS INDICATED IN SURVEYOR'S RECORD. ALL DIMENSIONS AT CASSE ROCK BRANCH 7TH ADDITION, 24-1/2 WEST OF THE WEST LINE OF THE SE 1/4 OF SEC. 12, TWP. 27-S, R-2-E. ELEV. = 1347.33 NGVD29  
ELEV. = 1347.81 NAVD83

604' NAIL IN HIGH LINE POLE, 30' SOUTH OF S 1/4 COR. SEC. 12, TWP. 27-S, R-2-E. ELEV. = 1348.59 NGVD29 (PER COUNTY RECORD)  
ELEV. = 1349.06 NAVD83 (CALCULATED PER COUNTY RECORD)

NOTE: DRAINAGE PLAN FOR DRAINAGE HAS BEEN DEVELOPED FOR THIS SUBDIVISION AND IS ON FILE WITH THE CITY OF WICHITA, KANSAS. ALL DRAINAGE EASEMENTS RIGHTS-OF-WAY, OR RESERVES SHALL REMAIN AT ESTABLISHED GRADES OR AS MODIFIED WITH THE APPROVAL OF THE CITY ENGINEER. THE DRAINAGE SYSTEM SHALL BE ALLOWED TO FLOW IN THE DIRECTION WHICH THE FLOW OF THIS DRAINAGE SYSTEM SHALL BE ALLOWED.

We, the undersigned holders of mortgages on the above described property, do hereby consent to this plat of "STONEBRIDGE 3RD ADDITION", Wichita, Sedgwick County, Kansas.  
\_\_\_\_\_,  
Commerce Bank, N.A.

State of Kansas) SS The foregoing instrument acknowledged be- Sedgwick County) fore me, this \_\_\_\_\_ day of \_\_\_\_\_, 2011, by \_\_\_\_\_, of Commerce Bank, N.A., on behalf of the bank.

\_\_\_\_\_, Notary Public  
My App't. Exp. \_\_\_\_\_

\_\_\_\_\_, Deputy  
**Tonya Buckingham**

**Baughman Company, P.A.**  
315 E 11th St., Wichita, KS 67211 P: 316.262.0149  
F: 316.262.0148  
www.baughmancompany.com  
MEMBERSHIP | SURVEYING | PLANNING | LANDSCAPE ARCHITECTURE