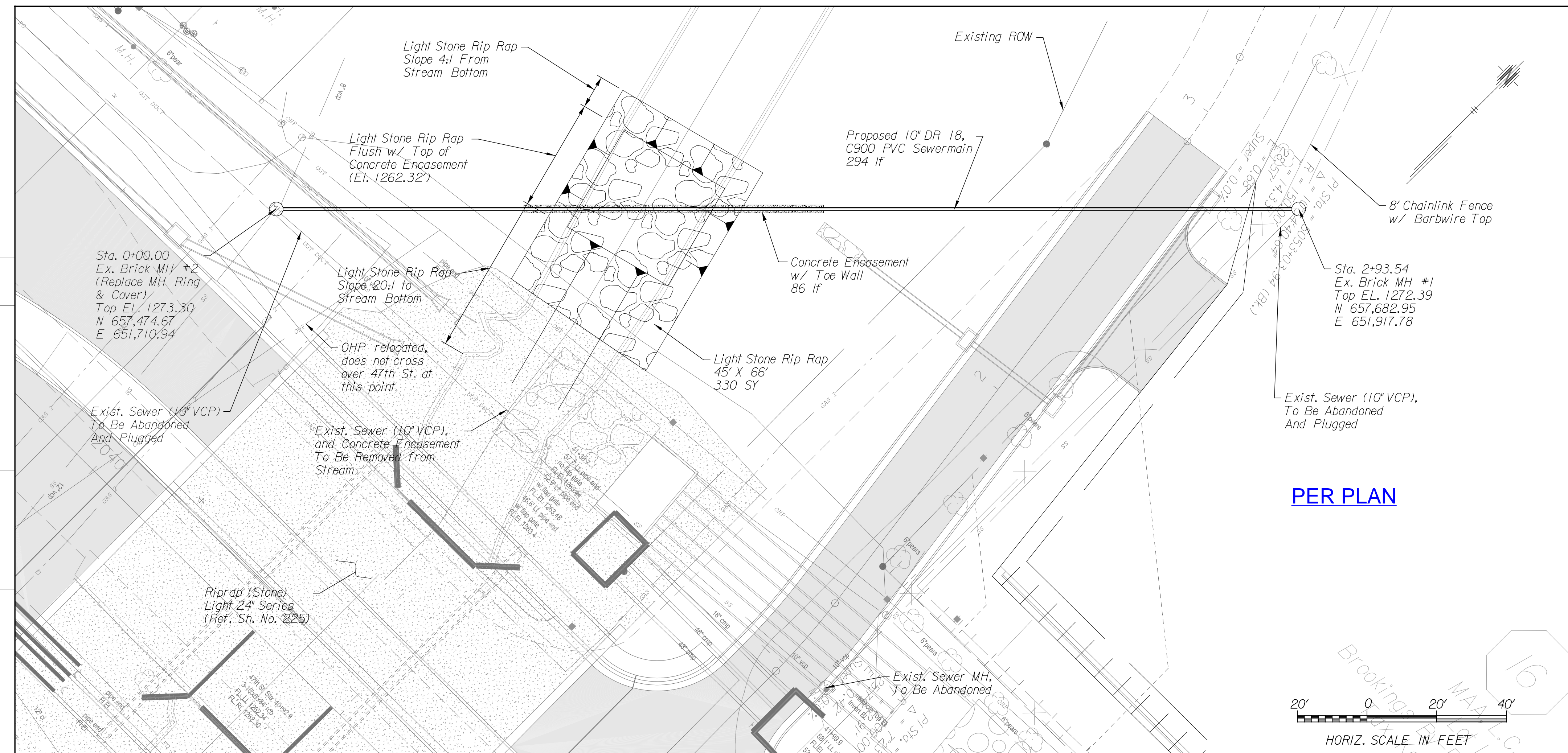


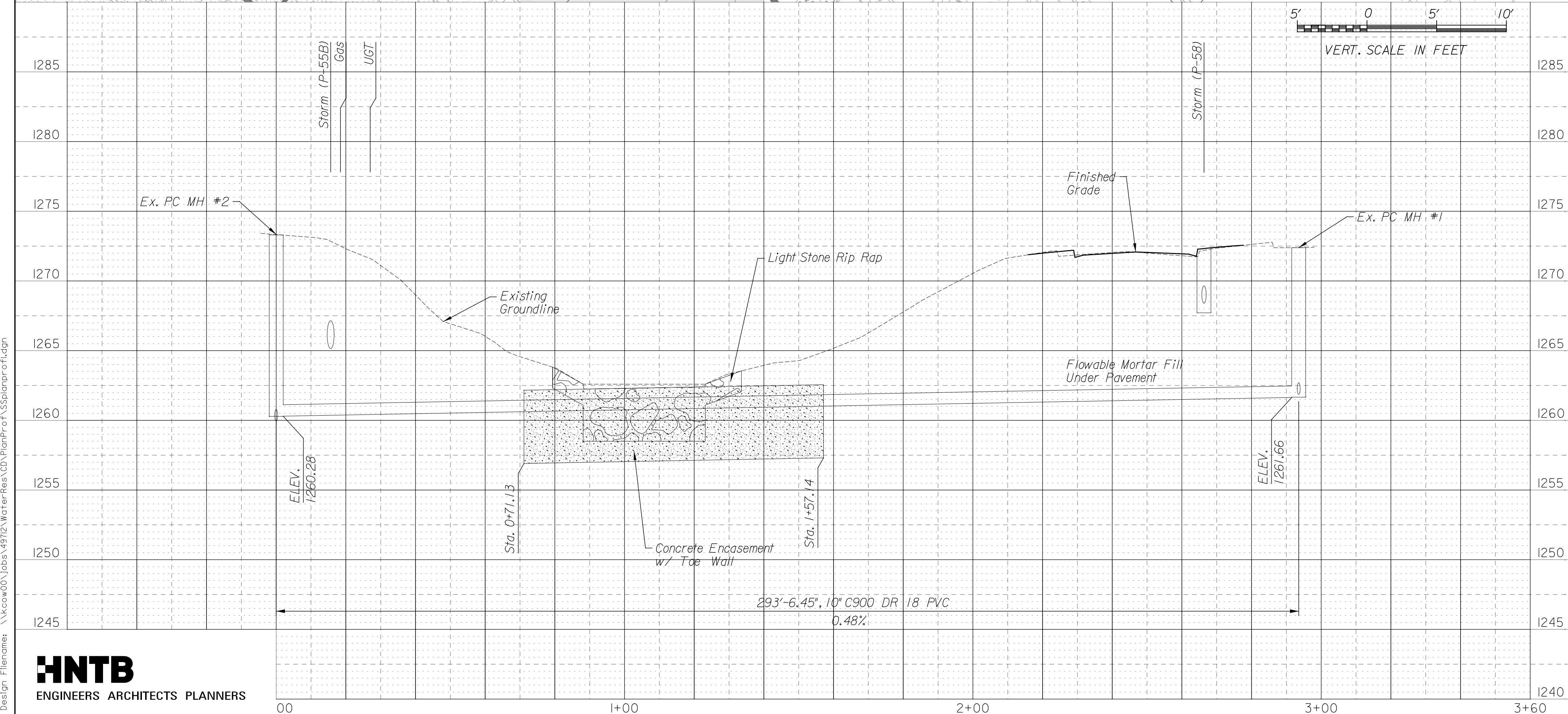
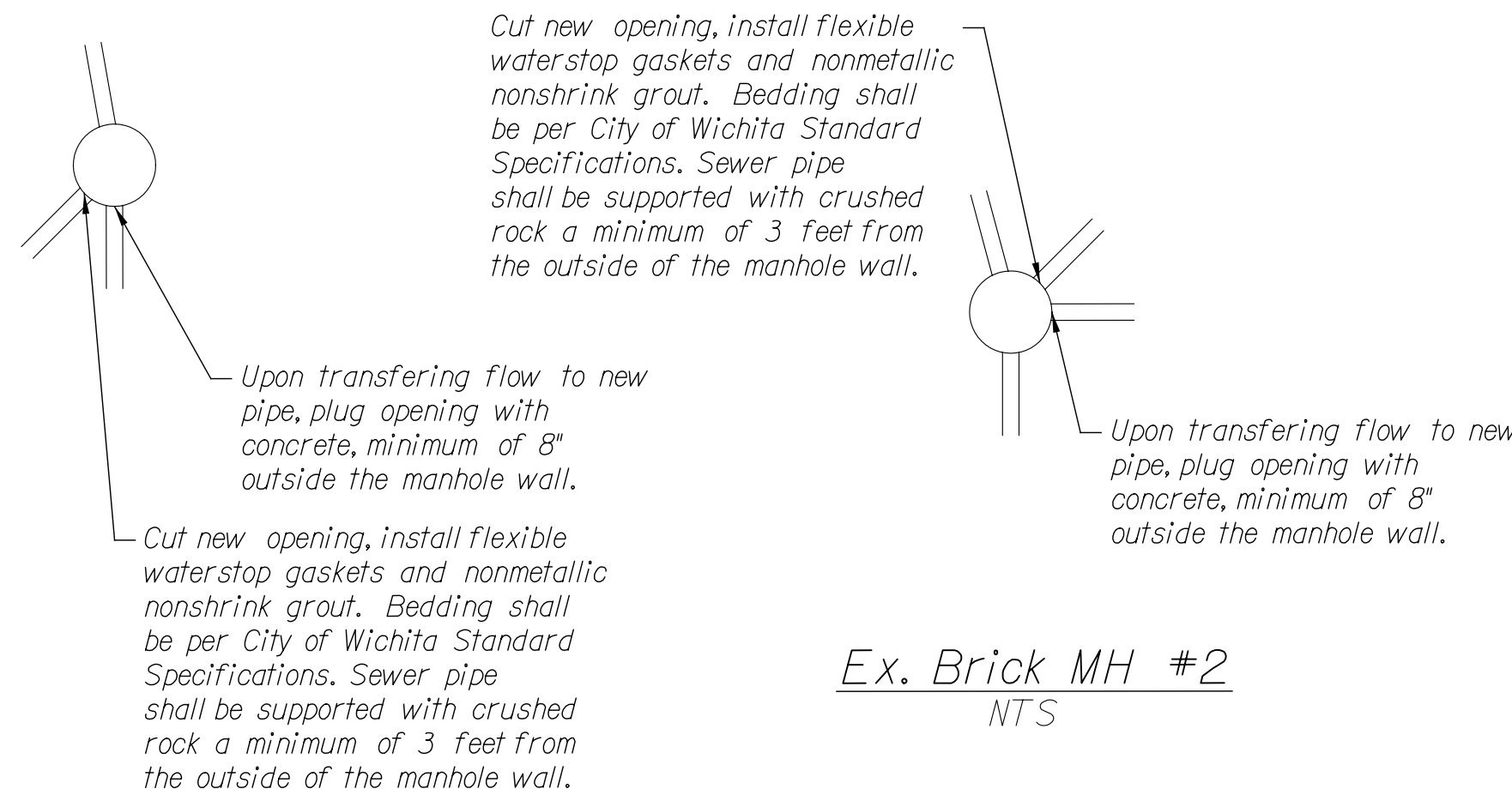
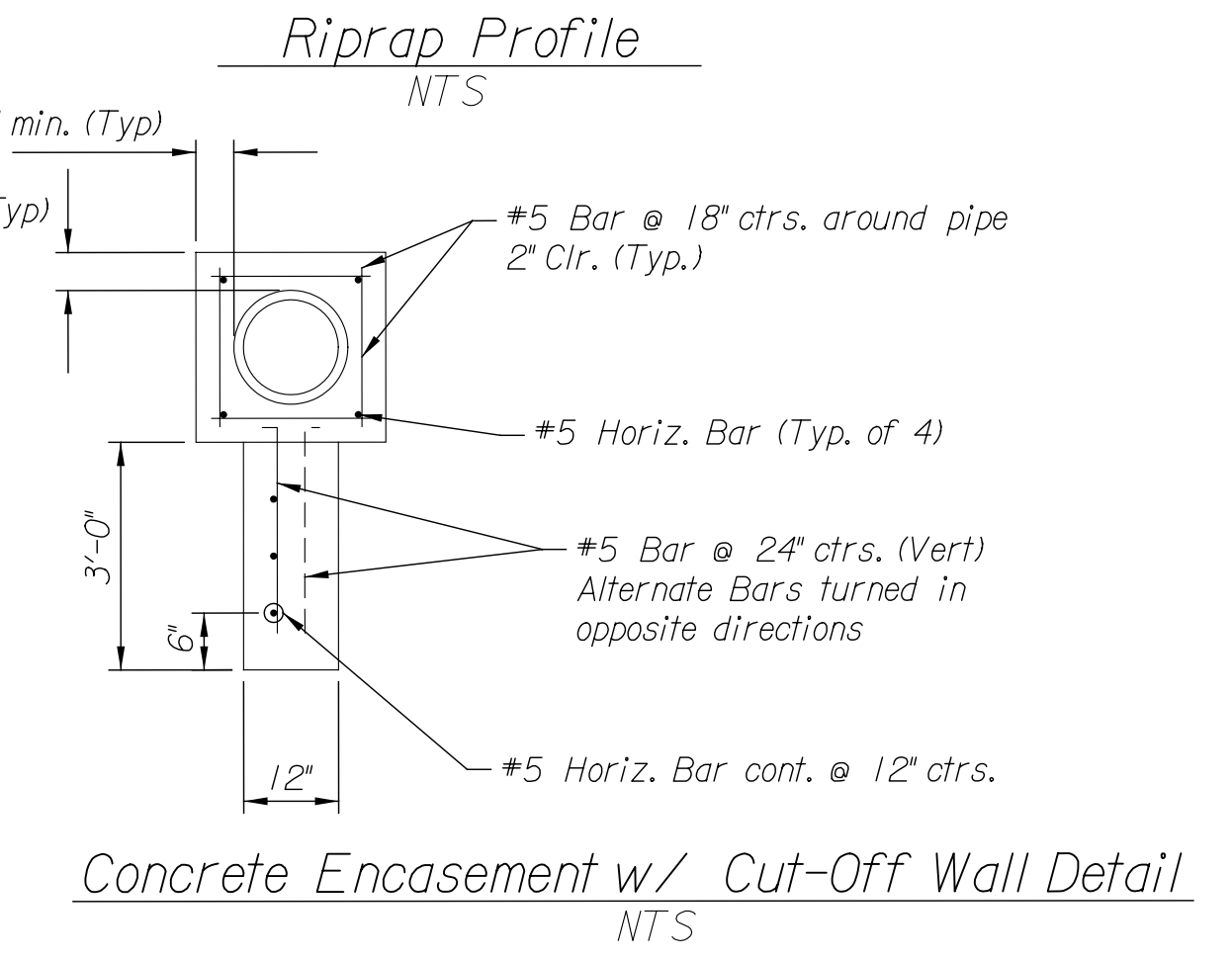
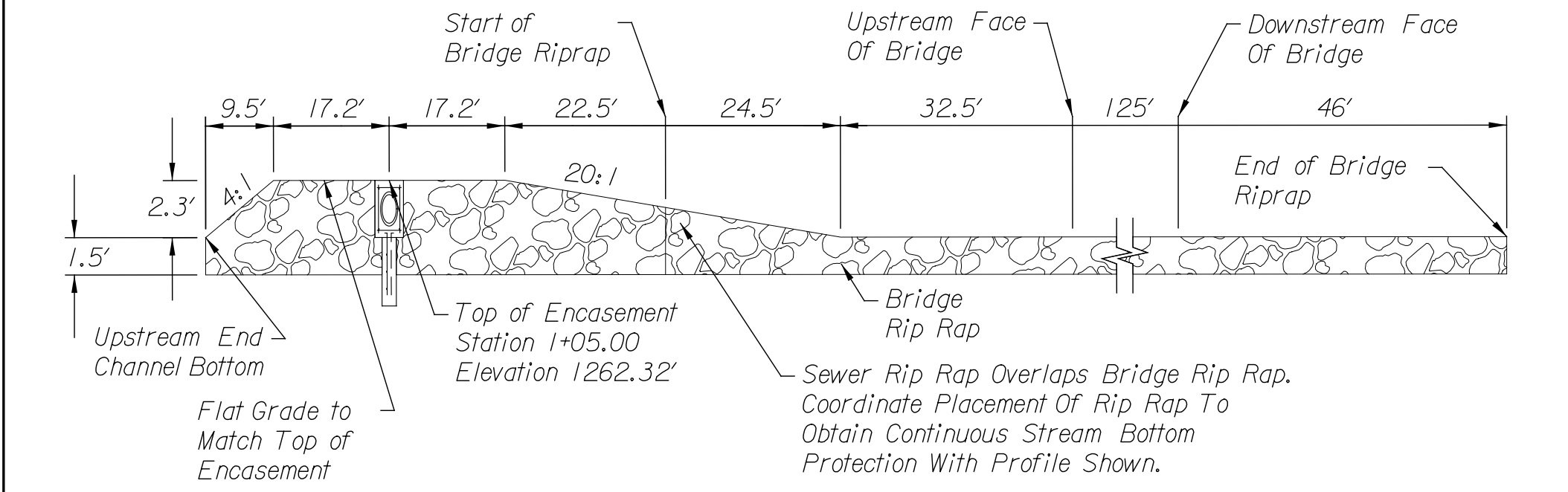
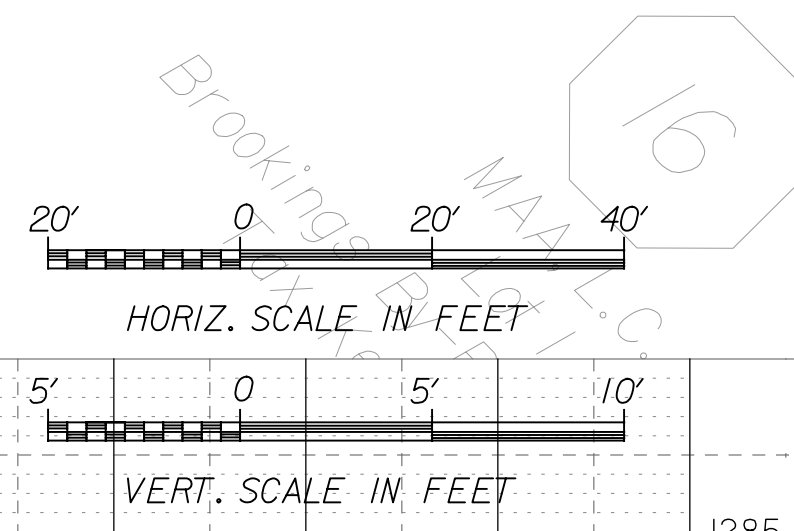
STATE	PROJECT NO.	YEAR	SHEET NO.	TOTAL SHEETS
KANSAS	135-87 KA-1006-02	2009		699

GENERAL NOTES

- ALL WORK SHALL BE DONE IN ACCORDANCE WITH THE MOST RECENT VERSION OF THE STANDARDS AND SPECIFICATIONS FOR SEWER LINE OF THE WICHITA, KANSAS -SEC 804.
- OPENINGS SHALL BE CORE DRILLED INTO THE MANHOLE WALL. SUCH OPENINGS DRILLED INTO EXISTING MANHOLES SHALL BE AS SMALL AS PRACTICAL TO FACILITATE INSTALLING AND GROUTING THE NEW PIPE IN PLACE. WATERSTOP GASKETS SHALL BE USED WITH PVC PIPE. THE NEW PIPE SHALL BE GROUTED INTO THE OPENING USING AN APPROVED NONSHRINK GROUT FOR THE FULL MANHOLE WALL THICKNESS. THE EXTERIOR OF THE COMPLETED CONNECTION SHALL BE SEALED WITH AN APPROVED BITUMINOUS COATING SUCH THAT THE CONNECTION WILL BE WATER TIGHT. THE BENCH AND INVERT OF THE MANHOLE SHALL BE MODIFIED TO FORM A NEW FLOW CHANNEL FOR THE NEW CONNECTION.
- FLOWABLE MORTAR FILL SHALL BE USED IN SEWER, WATER AND UTILITY TRENCHES UNDER THE PAVEMENT OR AT OTHER LOCATIONS AS SHOWN ON THE PLANS, OR AS SPECIFIED.



PER PLAN



Danco Enterprises - Contractor
J. Wagner - City of Wichita, Field Project Engr.
J. Payne - City of Wichita, Inspector
As-Built
Release Date: 06/06/11
pdf: APRosas 08/04/2011

NO.	DATE	REVISIONS
City of WICHITA, KANSAS US 81 \ 47th St. Waterline Relocation		

BY	DATE
B. Christman	4-08
K. Schomaker	5-08

REFERENCES NOTED	CHECKED

Plotted on: Monday, April 26, 2010 4:05
c:\hntb\proj\46884727\SS\plan\p01.dgn
Plot Queue: \c:\hntb\proj\46884727\SS\plan\p01.dgn
Plot Scale: 20d
Design File Names: \c:\hntb\proj\46884727\SS\plan\p01.dgn

