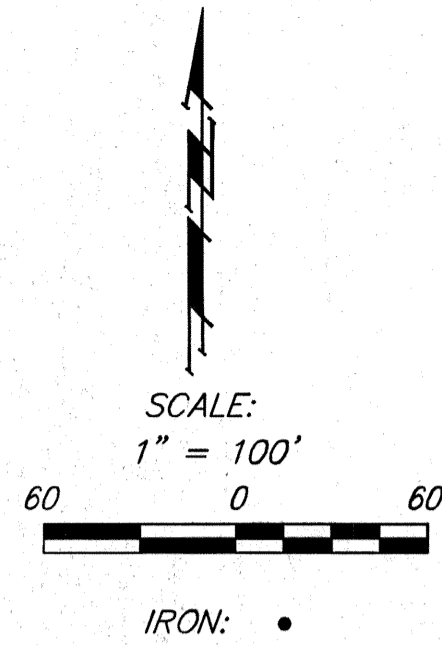


# AS BUILT PLANS

Contractor: Mies  
 Inspector: Don Eddingfield, Baughman Co.  
 pdf/s by: KEK, 4/11/11

Release Date: 8/3/2011  
 :APRosas 8/4/2011



# SANITARY SEWER, REMOVAL & MANHOLES TO SERVE

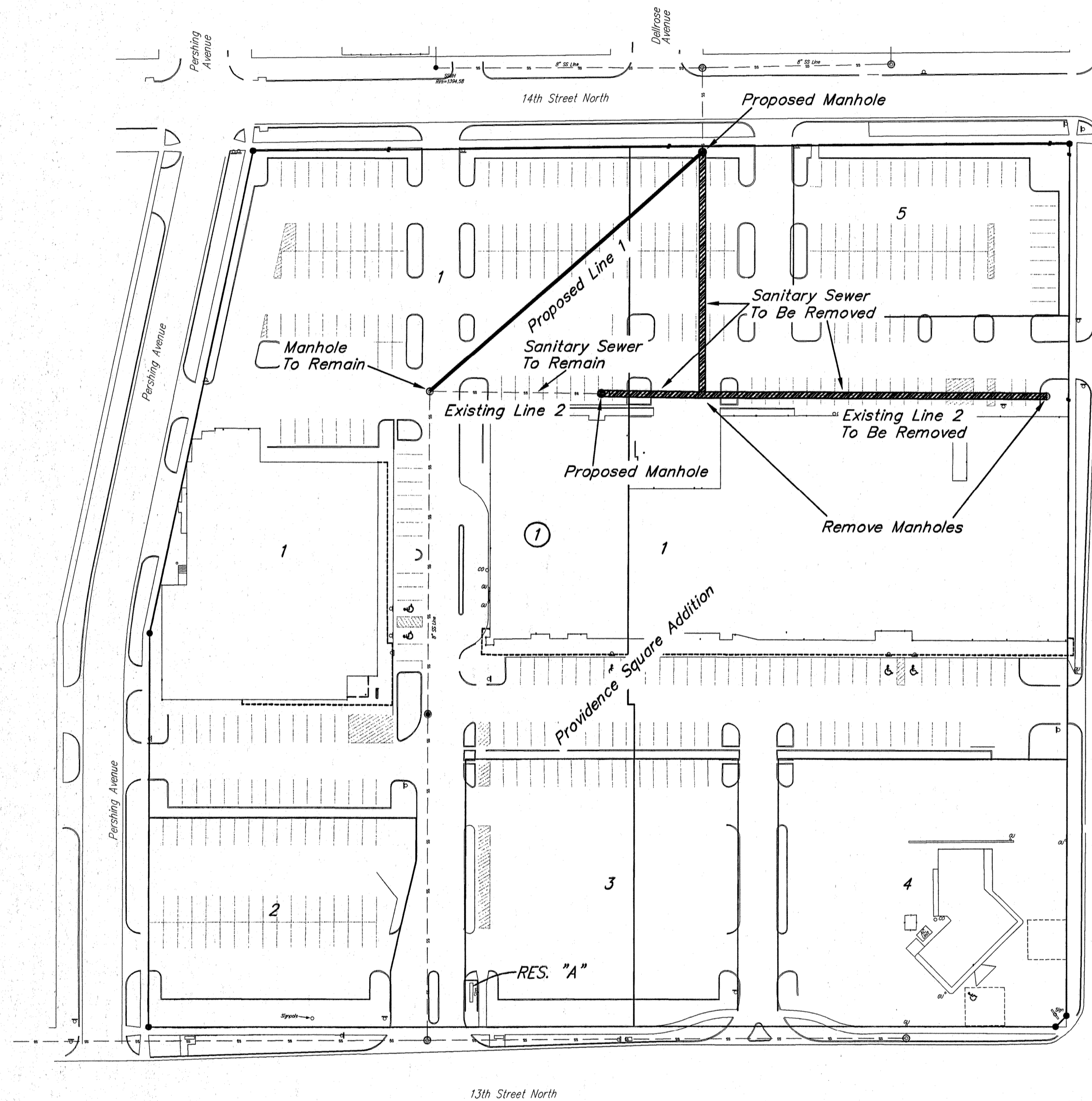
# Providence Square Addition

Private Project: 2097 PPS (607861)

CITY OF WICHITA, KANSAS

James Armour, P.E. City Engineer

March 2011



### Benchmark

"V" Chiseled on Conc. NE. Prop. Cor.  
 Elevation=1398.36 (NAVD88)

### Index

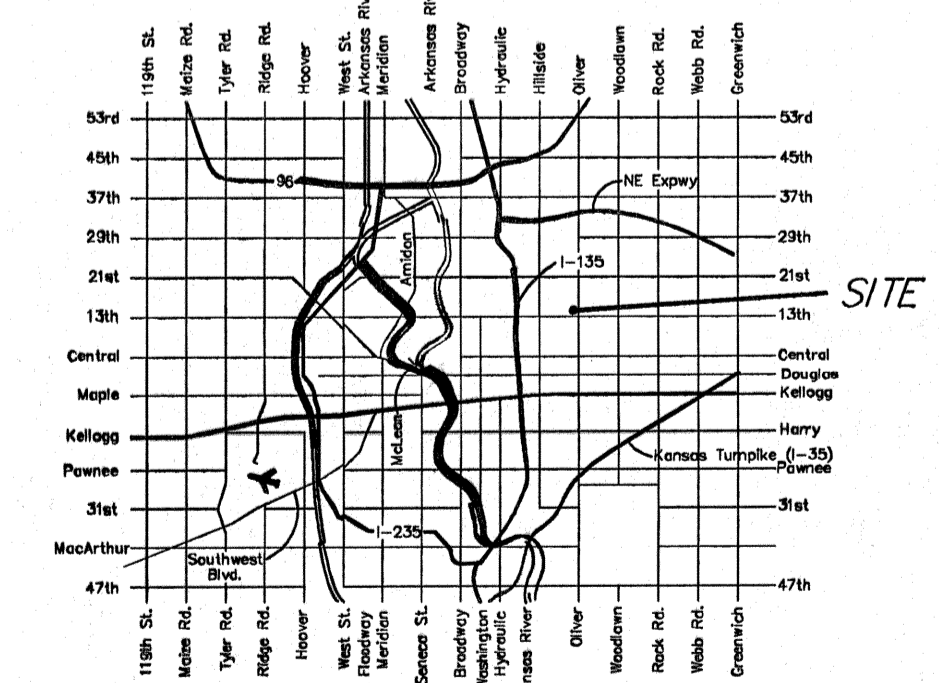
Title Sheet	1
Plan/Profile Sheet	2
Copy of Plat	3
Manhole / Ring & Cover Details	Available On Request
BMP Erosion Details	Available On Request

### Legal Description

Lots 1 & 5, Block 1, Providence Square Addition, Wichita, Sedgwick County, Kansas.

### General Notes

- Contractor will be required to provide notice to utility companies a minimum of forty-eight (48) hours prior to any excavation, as follows:  
 Kansas One-Call 687-2470  
 The Contractor must notify the following in case of an emergency:  
 Cox Communications  
 Kansas Gas Service Company 262-4270  
 Westar Energy (Electric) 1-888-482-4250  
 Black Hills Energy (Gas) 383-8650  
 Southwestern Bell Telephone Co. 1-800-303-0357  
 City of Wichita Water Dept. (Water) 1-800-286-8313  
 City of Wichita Sewer Maint. (SS) 262-6000  
 City of Wichita Storm Sewer Maint. 262-6000  
 City of Wichita Traffic Maint. 268-4090  
 268-4034
- All disturbed R/W areas not intended for pavement or sidewalk construction shall be seeded with Kansas Premium Fescue Blend at a rate of 8 lb./1000 Sq. Ft., fertilized with a 16-20-6 ratio at a rate of 4 lb./1000 Sq. Ft., and mulched with Prairie Hay at a rate of 92 lb./1000 Sq. Ft. Mulch shall be "patted" with forks or punched into soil to reduce loss due to wind.
- Utility service lines, poles, valve boxes, meters, et cetera are to be adjusted as necessary by others prior to construction unless the plans specifically call for their adjustment by the Contractor or unless the plans specifically identify a utility to be adjusted by its owner during construction. Existing utilities and their location, as shown on the plans represent the best information obtainable for design and shall be field verified. The contractor will be required to work around existing utilities within the right-of-way which do not conflict with proposed construction.
- Contractor shall furnish the inspector with a copy of the manufacturer's certification for any pipe used on this project after completion of pipe installation. The engineer will not certify the project to the city until pipe certification has been received.
- Properties within the project limits may have underground sprinkler systems which conflict with new construction. Contractor will be required to remove such improvements should they not be removed by their owner at the time of construction. The Contractor will be required to salvage all sprinkler heads and/or valves and give such material to their owner. Portions of underground sprinkler systems not in conflict with new construction shall be protected from damage and shall remain in place. All work in connection with underground sprinkler systems shall be considered as subsidiary to the contract pay items of work.
- Contractor shall not start work on the project until the project inspector is assigned to the project and is present on the site. Contractor shall not start on the project until all necessary bonds and permits have been obtained. Bonds may include but are not limited to Statutory, Performance & Maintenance. Any work done without inspection will be required to be uncovered for inspection.
- Rubble from the removal of miscellaneous structures and excess excavation which is to be wasted shall be disposed of on sites to be provided by the Contractor. These sites shall be approved by the Engineer as to suitability, appearance and site location. Locations that, in the opinion of the Engineer, will leave an unsightly appearance will not be approved. All disposal sites must be approved by the Kansas Department of Health and Environment. Material either stockpiled or disposed of in a flood plain would require a Kansas State Board of Agriculture permit. Any material dumped in waters of the United States or wetlands is subject to U.S. Corps of Engineers permitting regulations. Any material buried or stockpiled beyond approved construction limits would require additional archaeological investigations unless buried in a previously approved borrow location.
- All sanitary sewer lines and appurtenances shall be installed in accordance with the most recent edition of City of Wichita, Kansas Standard Specifications for the Construction of City Projects.



NO SCALE:

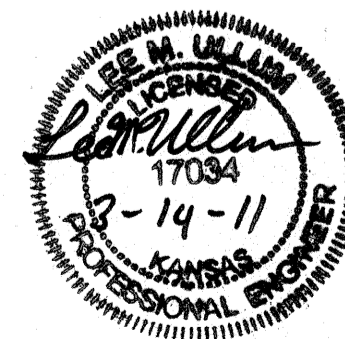
### VICINITY MAP

APPROVED AS NOTED  
 BY CITY ENGINEER OF WICHITA

Sanitary Sewers *Julian Kellman 3-14-11*

NOTE TO CONTRACTORS

Installation, inspection and testing for this project is to be provided by a Licensed Consulting Engineering Firm under contract with the Owner/Developer. Said inspection to be in accordance with the City of Wichita standard construction engineering practices and certified by a Licensed Professional Engineer. No work shall be performed in dedicated easements or public right-of-way by the Contractor without such inspection nor shall any work be commenced without written authorization by the City Engineer. All Construction and Materials shall comply with the City of Wichita Specifications and Standards (on file and available in the City Engineer's Office).



14th Street North

SCALE:  
1" = 20' HORIZONTAL  
1" = 5' VERTICAL  
20 0 20

Contractor Shall Follow All Applicable Best Management Practices (BMP) For Erosion Control.

NOTE:  
Contractor Shall Sand Backfill, Flush, & Vibrate All Trenches.

CAUTION!  
Proposed Gas Service Line Crossing. Proposed Depth Unknown.

CAUTION!  
2 Proposed Water Service Line Crossings. Proposed Depths Unknown.

CAUTION! VERIFY!  
Existing Electric Line Crossing. Depth Unknown.

Sta. 0+00.0, Begin Line 1. Core Existing Manhole. Extend 8" Sanitary Sewer Northeast. Reconstruct Invert For Smooth Flow.

CAUTION!  
2 Proposed Telephone Service Line Crossings. Proposed Depths Unknown.

CAUTION! VERIFY!  
Existing Cable & AT&T Line Crossings. Depths Unknown.

Sta. 2+36.2, End Line 1. Construct 4' Dia. Type "P" Standard Manhole Over Existing 8" Sanitary Sewer. Abandon Sanitary Sewer Pipe South Of Manhole Per City Specs. Top = 1396.78

Remove 159.4 L.F. 8" Sanitary Sewer Per City Specs.

Remove 159.4 L.F. 8" Sanitary Sewer & Verified Non Active Service Lines Per City Specs.

Sta. 1+11.3, Existing Line 2. Construct 4' Dia. Type "P" Standard Manhole. Abandon Sanitary Sewer East Of Proposed Manhole Per City Specs. Top = 1395.32

Remove Existing Manhole Per City Specs. Remove 8" Sanitary Sewer East, West & North Of Manhole Per City Specs. Top = 1396.08 / Flow = 1382.98

Remove 223.6 L.F. 8" Sanitary Sewer & Verified Non Active Service Lines Per City Specs.

CAUTION! VERIFY!  
Existing Utility Service Lines. Depths Unknown.

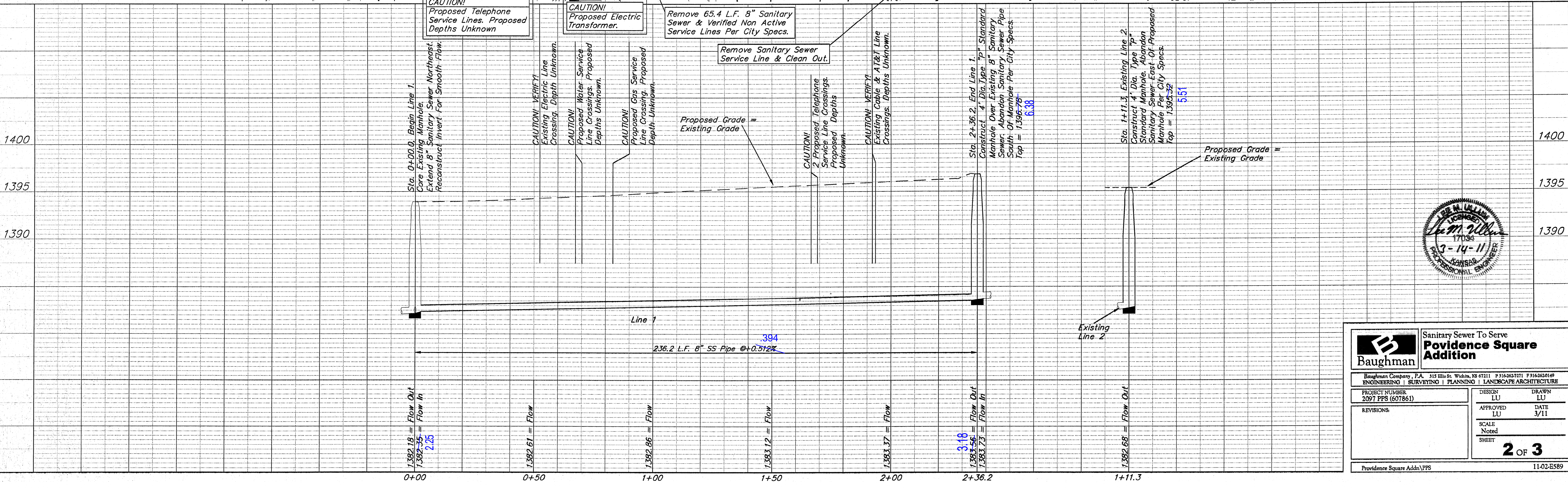
Contractor Shall Confirm That No Active Service Lines Exist On Sanitary Sewer Main Prior To Removal.

Contractor To Use Extreme Caution When Excavating Near Utility Lines. Contractor To Hand Dig To Expose All Utility Lines Prior To Construction. Verify Depth To Determine Conflict If Any.

Remove Existing Manhole Per City Specs. Remove 8" Sanitary Sewer West Of Manhole Per City Specs. Top = 1398.29 / Flow = 1386.61

**BENCHMARK**

SITE BENCHMARK  
"V" Chiseled on Conc. NE, Prop. Cor.  
Elevation = 1398.36 (NAVD88)



**Baughman** Sanitary Sewer To Serve  
**Povidence Square Addition**

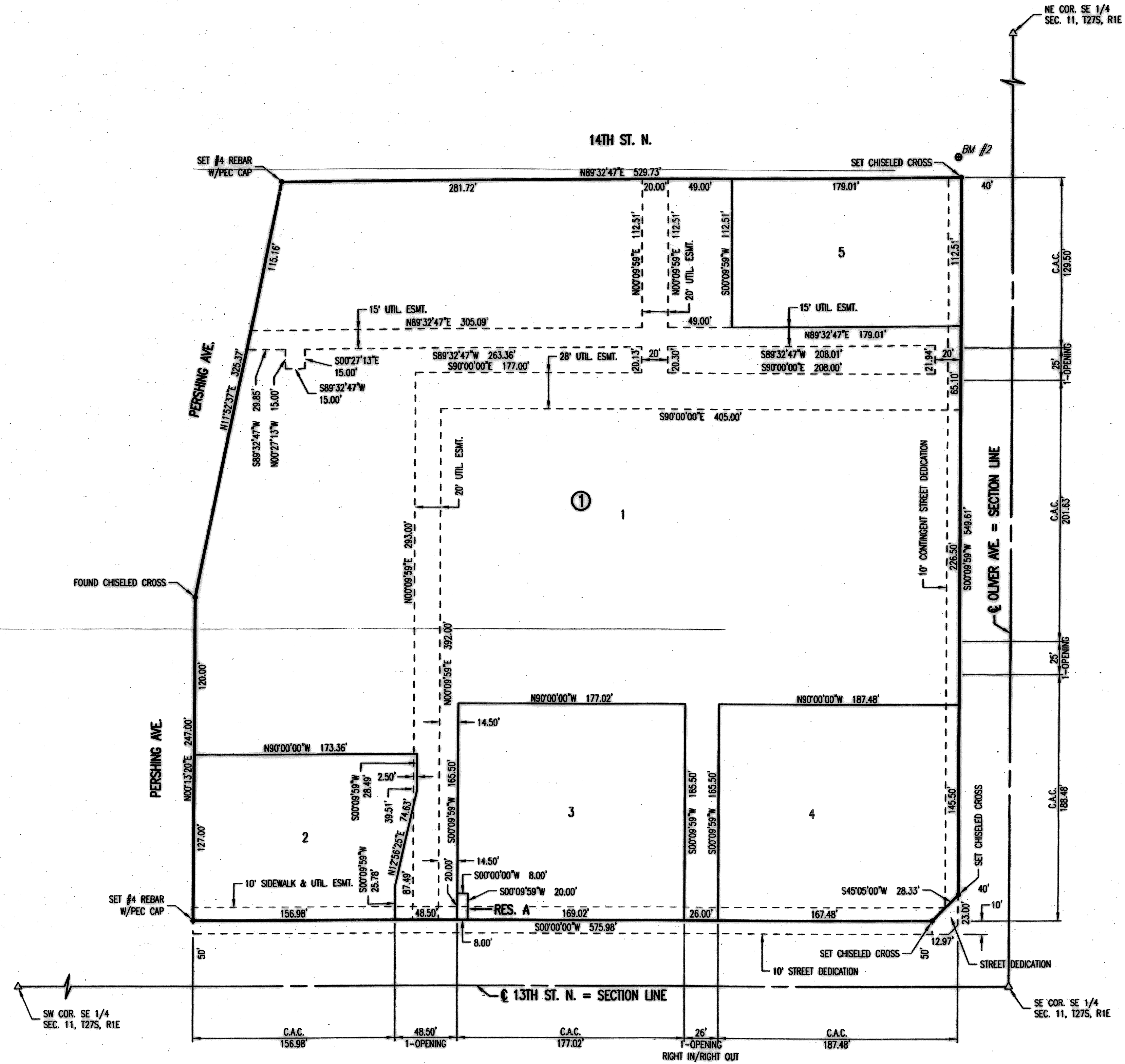
Baughman Company, P.A. 315 Ellis St. Wichita, KS 67211 P 316-262-7271 F 316-262-0149  
ENGINEERING | SURVEYING | PLANNING | LANDSCAPE ARCHITECTURE

PROJECT NUMBER 2097 PPS (607861)	DESIGN LU	DRAWN LU
REVISIONS:	APPROVED LU	DATE 3/11
SCALE Noted		<b>2 OF 3</b>
SHEET		

Providence Square Addn\PPS 11-02-E589

# PROVIDENCE SQUARE ADDITION

## WICHITA, SEDGWICK COUNTY, KANSAS



SCALE: 1" = 50'

- = #4 REBAR SET W/PEC CAP UNLESS OTHERWISE NOTED
- △ = SECTION CORNER

BENCHMARK @ BM #2  
 CHISELED "T" TOP OF SOUTH CURB OF 14TH ST. N., WEST SIDE OF SIDEWALK RAMP, WEST CURB RETURN AT SOUTHWEST CORNER OF 14TH ST. N. AND OLIVER AVE.  
 ELEVATION 1397.56 (NGVD 29)

STATE OF KANSAS }  
 COUNTY OF SEDGWICK } SS

WE, PROFESSIONAL ENGINEERING CONSULTANTS, P.A., ENGINEERS AND SURVEYORS IN AFORESAID STATE AND COUNTY, DO HEREBY CERTIFY THAT ON THIS 15th DAY OF July, 2009, WE HAVE SURVEYED AND RE-PLATTED PART OF KEN-MAR ADDITION, WICHITA, SEDGWICK COUNTY, KANSAS, INTO LOTS, A BLOCK, AND A RESERVE, THE SAME BEING DESCRIBED AS FOLLOWS:

RESERVE "C", KEN-MAR ADDITION, WICHITA, SEDGWICK COUNTY, KANSAS, EXCEPT THAT PART CONDEMNED FOR STREET IN DISTRICT COURT CONDEMNATION CASE NO. 84C2124.

ALL PUBLIC EASEMENTS LYING WITHIN THE ABOVE DESCRIBED TRACT OF LAND ARE HEREBY VACATED AND REPLATTED BY VIRTUE OF KSA 12-512(b) AMENDED.

JAMES R. BECKETT, R.L.S. NO. 832  
 PROFESSIONAL ENGINEERING CONSULTANTS, P.A.

EASEMENTS FOR THE CONSTRUCTION AND MAINTENANCE OF PUBLIC UTILITIES AND DRAINAGE ARE HEREBY GRANTED.

ACCESS CONTROLS AS INDICATED ARE HEREBY GRANTED TO THE APPROPRIATE GOVERNING BODY.

RESERVE "A" IS HEREBY PLATTED FOR SIDEWALKS, SIGNS AND UTILITIES CONFINED TO EASEMENTS. RESERVE "A" SHALL BE OWNED AND MAINTAINED BY AN OWNERS ASSOCIATION FORMED WITHIN PROVIDENCE SQUARE ADDITION.

THIS ADDITION IS SUBJECT TO THE CONDITIONS OF PROVIDENCE SQUARE COMMUNITY UNIT PLAN DP-319.

10' CONTINGENT STREET DEDICATION ALONG OLIVER AVE. IS CONTINGENT ON THE REMOVAL OF THE EXISTING BUILDING AT 4602 E. 13TH STREET NORTH.

KNOW ALL MEN BY THESE PRESENTS THAT WE, THE UNDERSIGNED PROPERTY OWNERS OF THE LAND AS ABOVE SET FORTH IN THE SURVEYOR'S CERTIFICATE, HAVE CAUSED THE LAND TO BE SURVEYED AND PLATTED INTO LOTS, A BLOCK, AND A RESERVE, THE SAME TO BE KNOWN AS PROVIDENCE SQUARE ADDITION, WICHITA, SEDGWICK COUNTY, KANSAS.

OWNERS:  
 HH HOLDING, LLC.  
*Kevass A. Harding*  
 KEVASS HARDING, MANAGING PARTNER

Register of Deeds - Bill Meek  
 DOC.#/FILE#-PG: 29077513  
 Record # 1223801  
 Date Recorded: 7/20/2009 11:53:46 AM  
 Authorized By: *[Signature]*

STATE OF KANSAS }  
 COUNTY OF SEDGWICK } SS

THIS INSTRUMENT WAS ACKNOWLEDGED BEFORE ME ON THIS 14th DAY OF May, 2009, BY KEVASS HARDING, MANAGING PARTNER OF HH HOLDING, LLC.

*Kathy P. Morrison*  
 KATHY P. MORRISON, NOTARY PUBLIC

MY APPOINTMENT EXPIRES: 10-14-2011

WE, CENTRAL NATIONAL BANK, HOLDER OF A MORTGAGE ON THE ABOVE DESCRIBED PROPERTY, DO HEREBY CONSENT TO THE PLAT OF PROVIDENCE SQUARE ADDITION, WICHITA, SEDGWICK COUNTY, KANSAS.

*Kevin D. Klein*  
 KEVIN D. KLEIN, PRESIDENT

STATE OF KANSAS }  
 COUNTY OF SEDGWICK } SS

THIS INSTRUMENT WAS ACKNOWLEDGED BEFORE ME ON THIS 5th DAY OF May, 2009, BY KEVIN D. KLEIN, PRESIDENT OF CENTRAL NATIONAL BANK.

*Travis K. Boles*  
 TRAVIS K. BOLES, NOTARY PUBLIC

MY APPOINTMENT EXPIRES: 10/17/09

THIS PLAT OF PROVIDENCE SQUARE ADDITION, WICHITA, SEDGWICK COUNTY, KANSAS, HAS BEEN SUBMITTED TO AND APPROVED BY THE WICHITA-SEDGWICK COUNTY METROPOLITAN AREA PLANNING COMMISSION, WICHITA, KANSAS.

DATED THIS 9th DAY OF April, 2009.

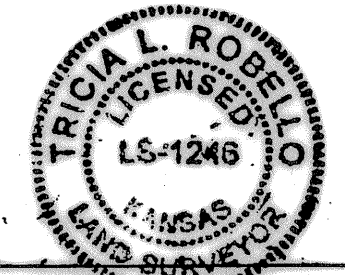
WICHITA-SEDGWICK COUNTY METROPOLITAN AREA PLANNING COMMISSION

*Darrell Downing*  
 DARRELL DOWNING, CHAIR

*John L. Schlegel*  
 JOHN L. SCHLEGEL, SECRETARY



REVIEWED IN ACCORDANCE WITH K.S.A. 58-2005 ON THIS 15th DAY OF July, 2009.



TRICIA L. ROBELLO, L.S. 1246  
 DEPUTY COUNTY SURVEYOR  
 SEDGWICK COUNTY, KANSAS

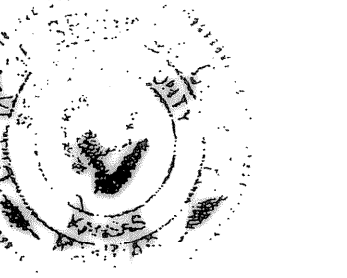
THIS PLAT IS APPROVED AND ALL DEDICATIONS SHOWN HEREON, IF ANY ARE ACCEPTED BY THE CITY COUNCIL OF THE CITY OF WICHITA, KANSAS, THIS 21st DAY OF July, 2009.

*Carl Brewer*  
 CARL BREWER, MAYOR

*Karen Sublett*  
 KAREN SUBLETT, CLERK

ENTERED ON TRANSFER RECORD THIS 15th DAY OF July, 2009.

*Kelly B. Arnold*  
 KELLY B. ARNOLD, COUNTY CLERK



THIS IS TO CERTIFY THAT THIS INSTRUMENT WAS FILED FOR RECORD IN THE REGISTER OF DEEDS OFFICE AT 11:53 AM, ON THE 20th DAY OF July, 2009.

*Bill Meek*  
 BILL MEEK, REGISTER OF DEEDS

*Konya Buckingham*  
 KONYA BUCKINGHAM, DEPUTY

KATHY P. MORRISON  
 NOTARY PUBLIC  
 STATE OF KANSAS  
 Exp. 10-14-2011