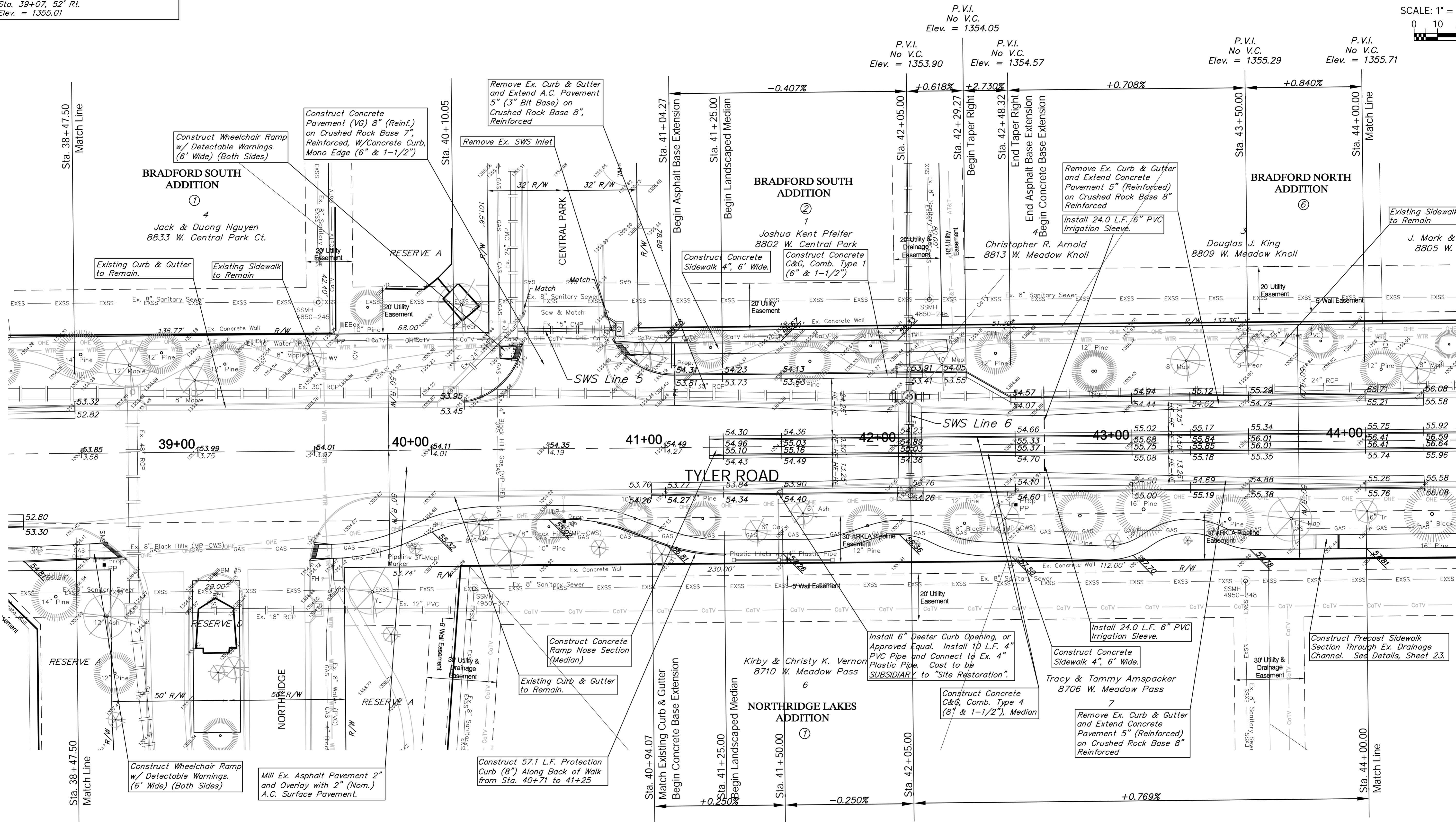


BENCHMARK:
 BM #5 - Chiseled "□" on the Top of the Curb on the West End of the Median at Northridge. Sta. 39+07.52' Rt. Elev. = 1355.01

SCALE: 1" = 20'
 0 10 20



P.V.I. No V.C. Elev. = 1354.05
 P.V.I. No V.C. Elev. = 1353.90
 P.V.I. No V.C. Elev. = 1354.57
 P.V.I. No V.C. Elev. = 1355.29
 P.V.I. No V.C. Elev. = 1355.71

P.V.I. No V.C. Elev. = 1354.40
 P.V.I. No V.C. Elev. = 1354.26
 P.V.I. No V.C. Elev. = 1355.76