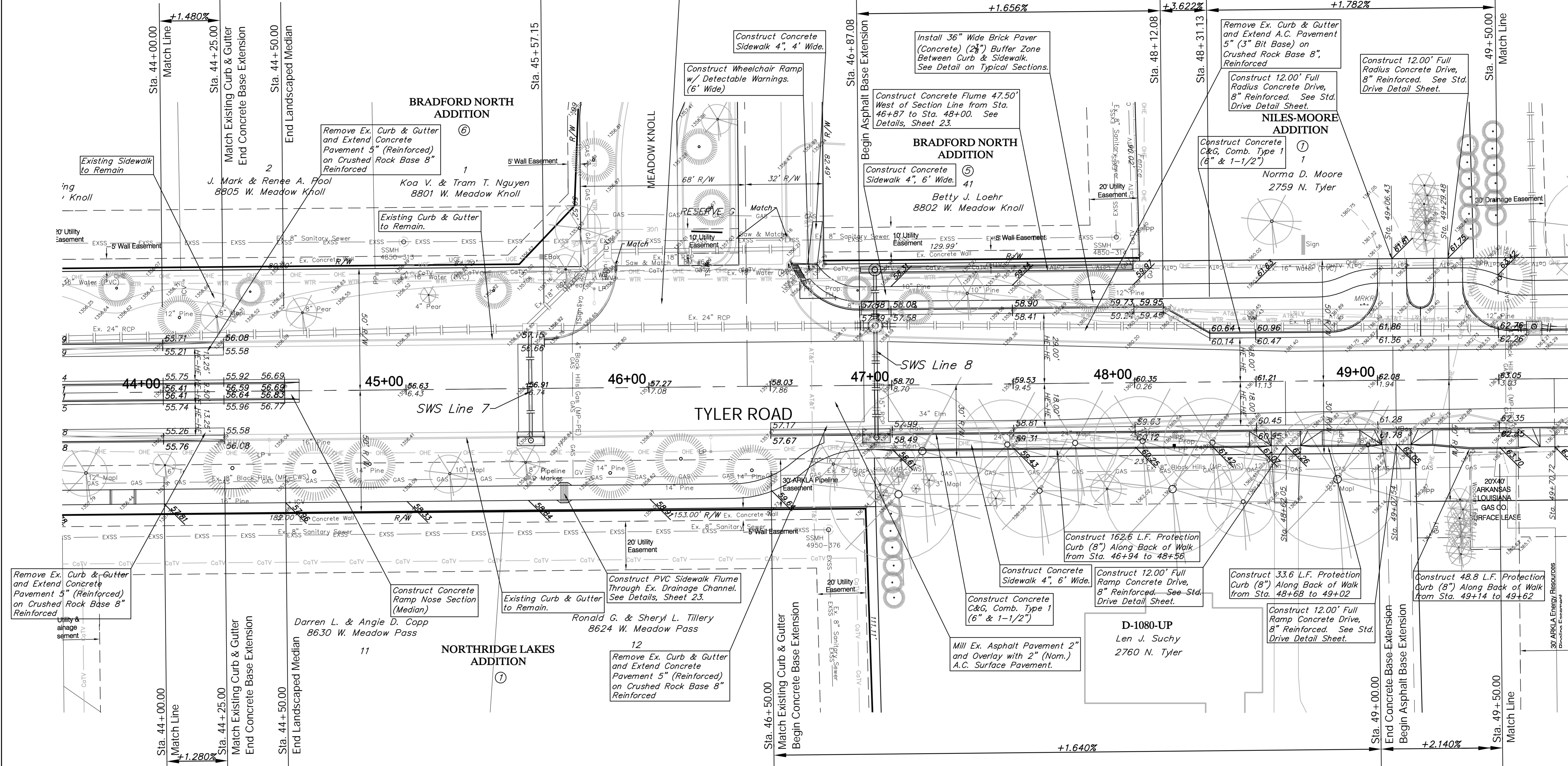
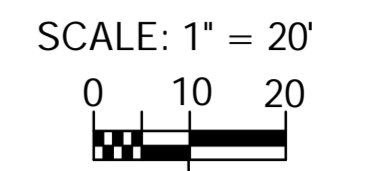


BENCHMARK:
 BM #6 - Chiseled "□" on the Top of the Curb on the East End of Median at Meadow Knoll Sta. 46+24, 50' Lt. Elev. = 1357.00

P.V.I. No V.C. Elev. = 1355.71
 P.V.I. No V.C. Elev. = 1355.71

P.V.I. No V.C. Elev. = 1259.95
 P.V.I. No V.C. Elev. = 1360.64



P.V.I. No V.C. Elev. = 1355.76
 P.V.I. No V.C. Elev. = 1356.08

P.V.I. No V.C. Elev. = 1361.78

P.V.I. No V.C. Elev. = 1362.85

Drawing File: E:\Projects\Tyler - 21st to 29th\Civil 3d\Tyler Base.dwg (Pav07)

Design: TPV
 Drawn: STAFF
 Approved: TPV
 Scale: NOTED

Project No. 1012E575 CAPITAL IMPROVEMENT PROJECT
 TYLER ROAD PAVING
 Sta. 44+00.00 to Sta. 49+50.00
 TYLER ROAD - 21ST STREET NORTH to 29TH STREET NORTH

Baughman Company, P.A.
 315 Ellis St., Wichita, KS 67211 P 316.262.1271 F 316.262.0149
 ENGINEERING | SURVEYING | PLANNING | LANDSCAPE ARCHITECTURE

July 2011
 SHEET 17 OF 100