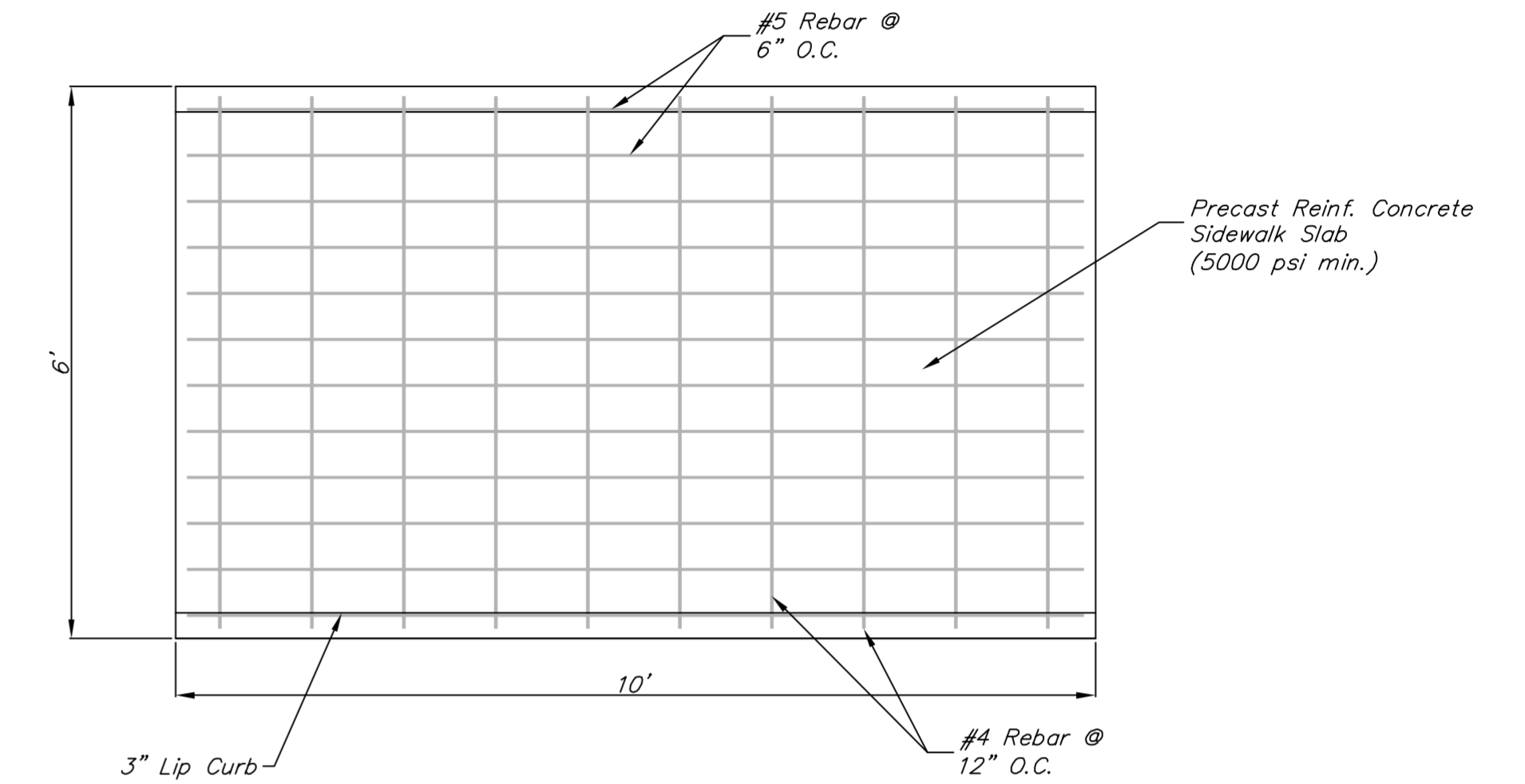


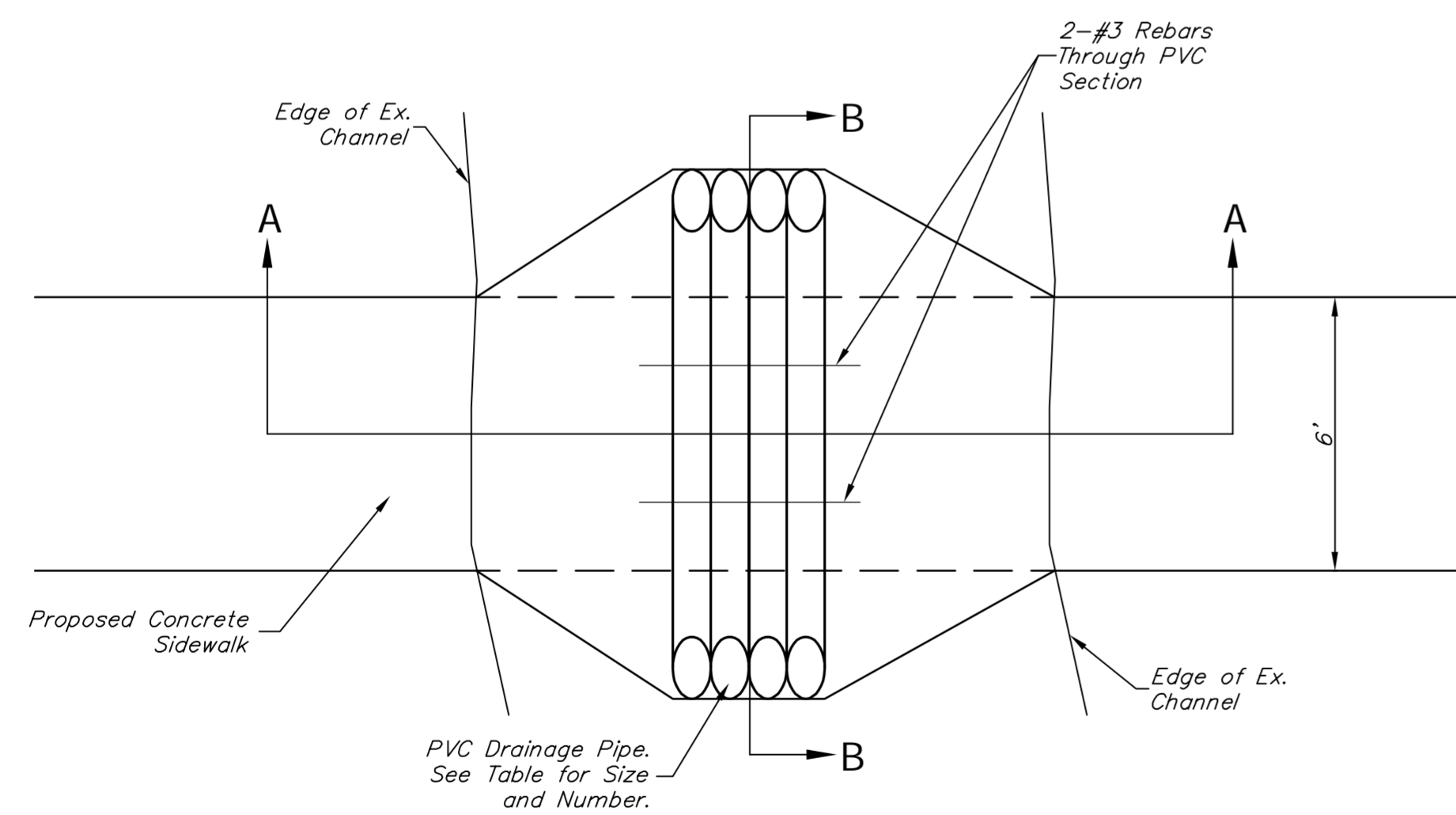
CONCRETE FLUME DETAIL

All Cost Associated with Constructing the Concrete Flume Shall be Considered **SUBSIDIARY** to the Lump Sum Bid Item "Concrete Flume" (L.F.).



PRECAST SIDEWALK SECTION
Sta. 43+83

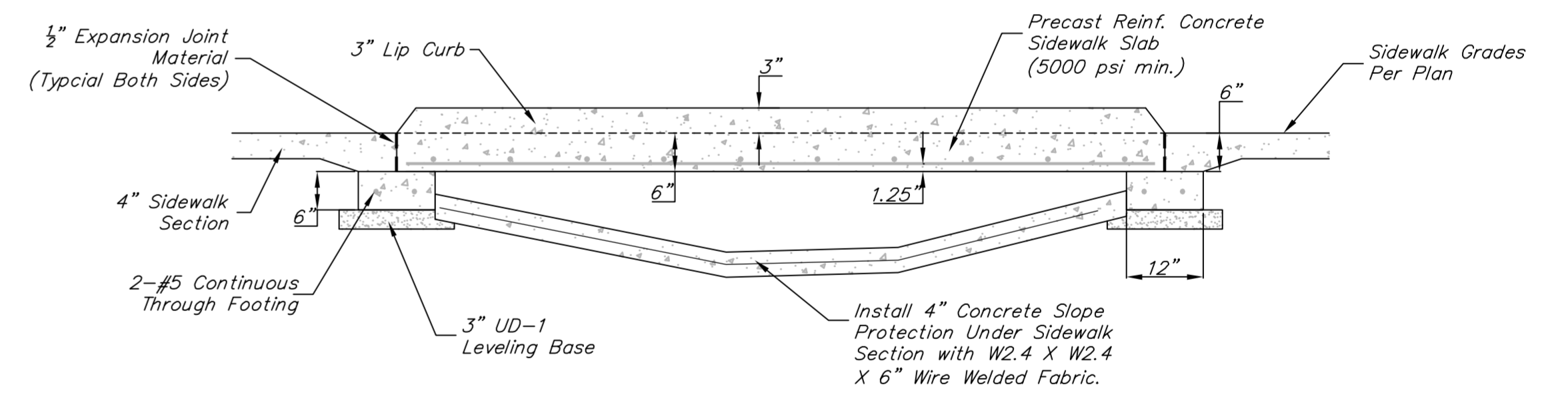
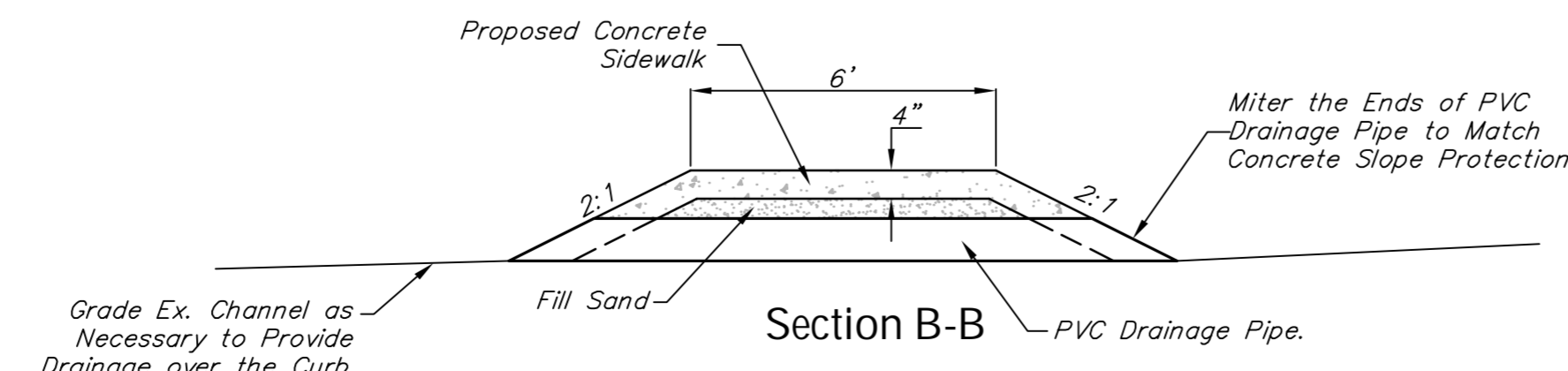
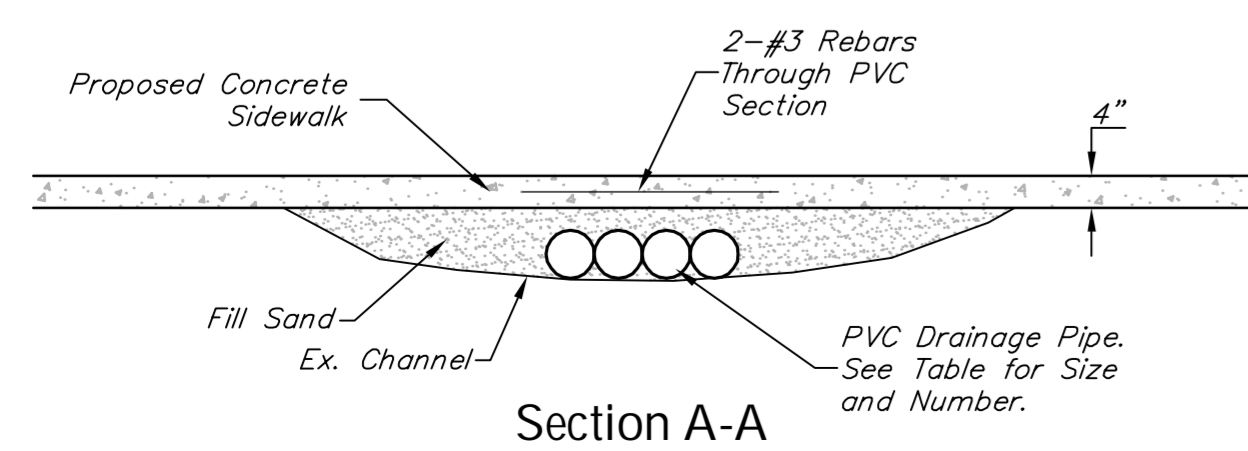
All Cost Associated with Constructing and Installing the Precast Reinforced Concrete Sidewalk Slab Shall be Considered **SUBSIDIARY** to the Lump Sum Bid Item "Precast Sidewalk Section".



PVC SIDEWALK FLUME

All Cost Associated with Constructing the Sidewalk Flume Shall be Considered **SUBSIDIARY** to the Lump Sum Bid Item "PVC Sidewalk Flume".

PVC Pipes for Sidewalk Flumes		
Sta.	Dia.	No.
38+14	4"	4
45+65	6"	6



Drawing File: TPV
Design: City of Wichita
Drawn: Staff
Approved: TPV
Scale: NOTED

Project No. 10-12E575
CAPITOL IMPROVEMENT PROJECT
CONCRETE FLUME & SIDEWALK DETAILS
TYLER ROAD - 21ST STREET NORTH TO 29TH STREET NORTH

Baughman Company, P.A.
315 Ellis St. Wichita, KS 67211 P. 316-262-7271 F. 316-262-0149
ENGINEERING | SURVEYING | PLANNING | LANDSCAPE ARCHITECTURE

July 2011
SHEET 23 OF 100