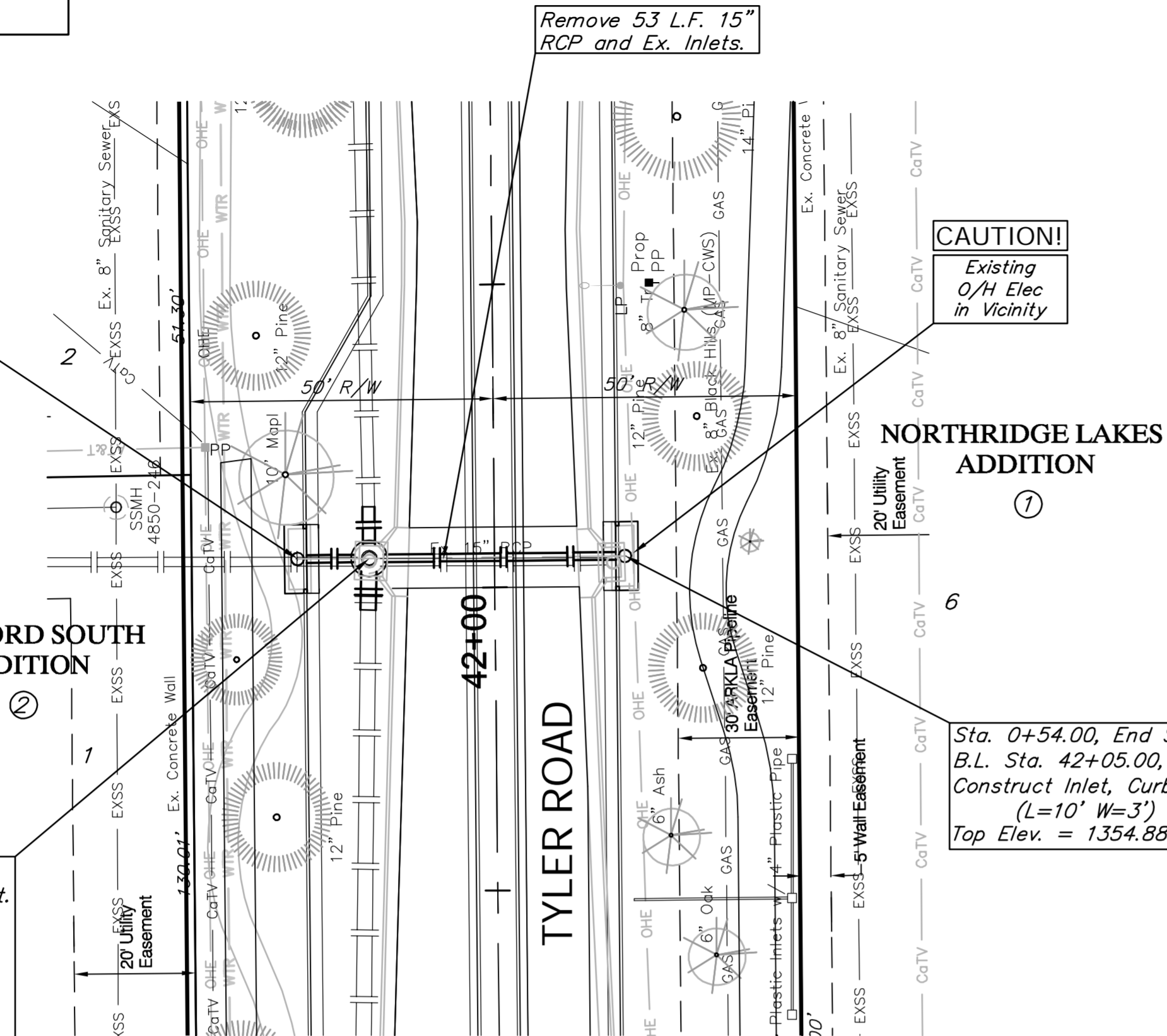


BENCHMARK:  
 BM #5 - Chiseled "□" on the Top of the Curb on the West End of the Median at Northridge. Sta. 39+07.52' Rt. Elev. = 1355.01

Sta. 0+00.00, Begin SWS Line 6 = B.L. Sta. 42+05.00, 32.50' Lt. Construct Inlet, Curb (Type 1) (L=10' W=3') Connect Ex. 15" RCP (W), Grout and Seal Tight. Top Elev. = 1354.53

Sta. 0+11.82, SWS Line 6 = B.L. Sta. 42+05.00, 20.68' Lt. Construct MH, Type P Special Shallow (5') Install 6.00 L.F. 24" RCP (N) and Connect to Existing RCP w/ Concrete Collar. Install 6.00 L.F. 30" RCP (S) and Connect to Existing RCP w/ Concrete Collar. Top Elev. = 1353.84

BRADFORD SOUTH ADDITION



SWS Line 6

Remove 53 L.F. 15" RCP and Ex. Inlets.

CAUTION! Existing O/H Elec in Vicinity

NORTHRIDGE LAKES ADDITION

Sta. 0+54.00, End SWS Line 6 = B.L. Sta. 42+05.00, 21.50' Rt. Construct Inlet, Curb (Type 1) (L=10' W=3') Top Elev. = 1354.88

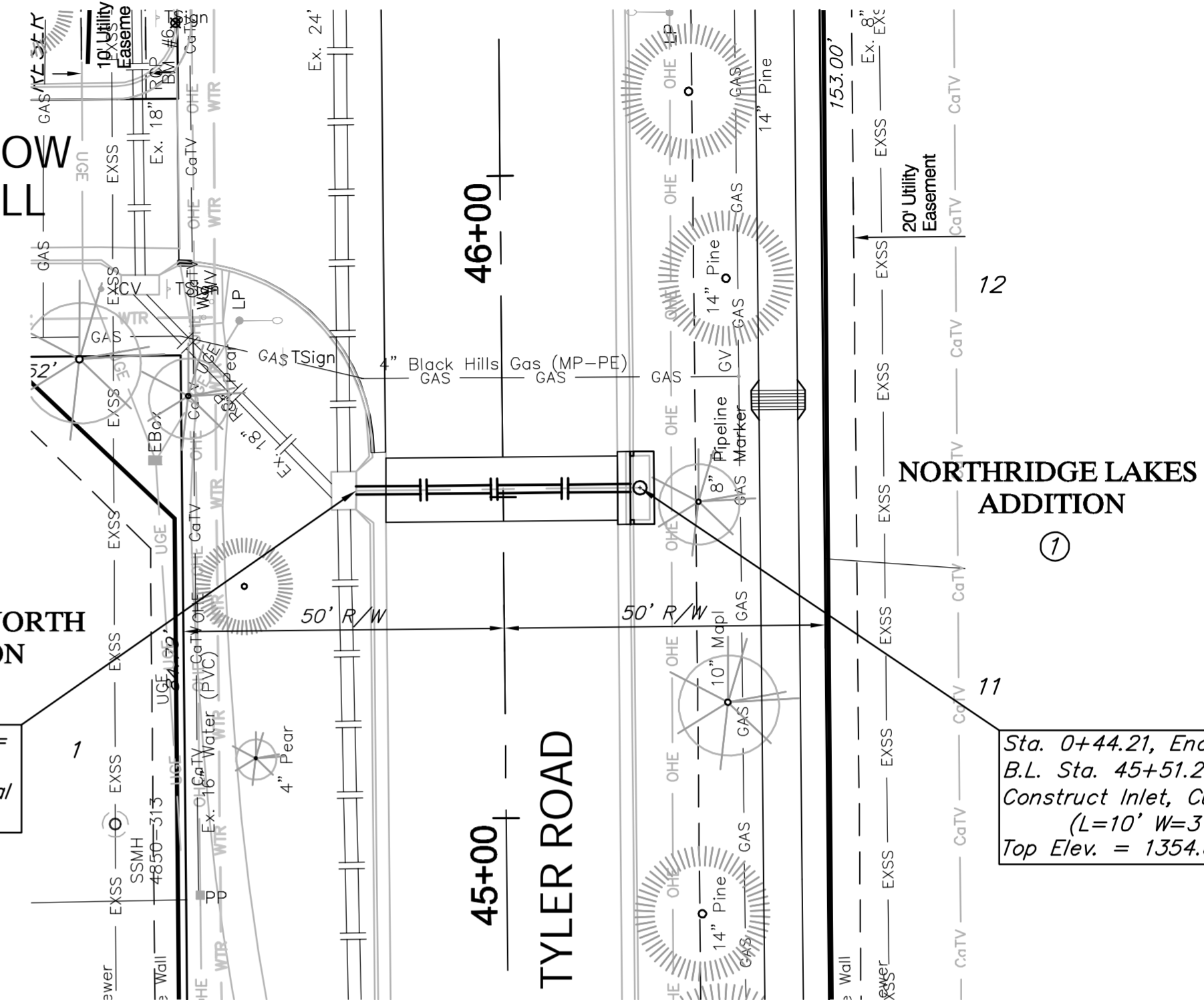
SCALE:  
 HORIZONTAL: 1" = 20'  
 VERTICAL: 1" = 5'

BENCHMARK:  
 BM #6 - Chiseled "□" on the Top of the Curb on the East End of Median at Meadow Knoll. Sta. 46+24.50' Lt. Elev. = 1357.00

Sta. 0+00.00, Begin SWS Line 7 = B.L. Sta. 45+51.23, 22.87' Lt. Connect to Ex. Inlet, Grout, & Seal Tight.

BRADFORD NORTH ADDITION

MEADOW KNOLL



SWS Line 7

Sta. 0+44.21, End SWS Line 7 = B.L. Sta. 45+51.23, 21.34' Rt. Construct Inlet, Curb (Type 1) (L=10' W=3') Top Elev. = 1354.88

SCALE:  
 HORIZONTAL: 1" = 20'  
 VERTICAL: 1" = 5'

