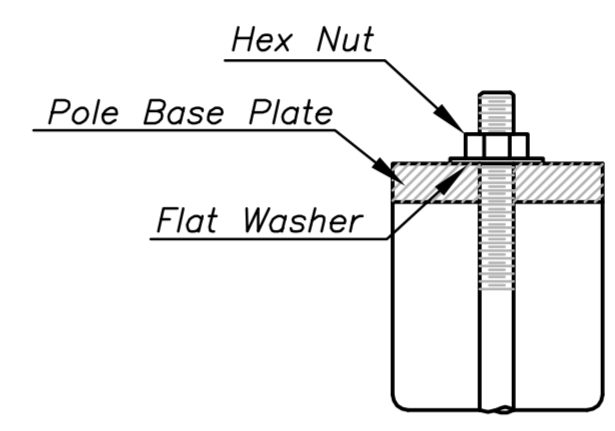
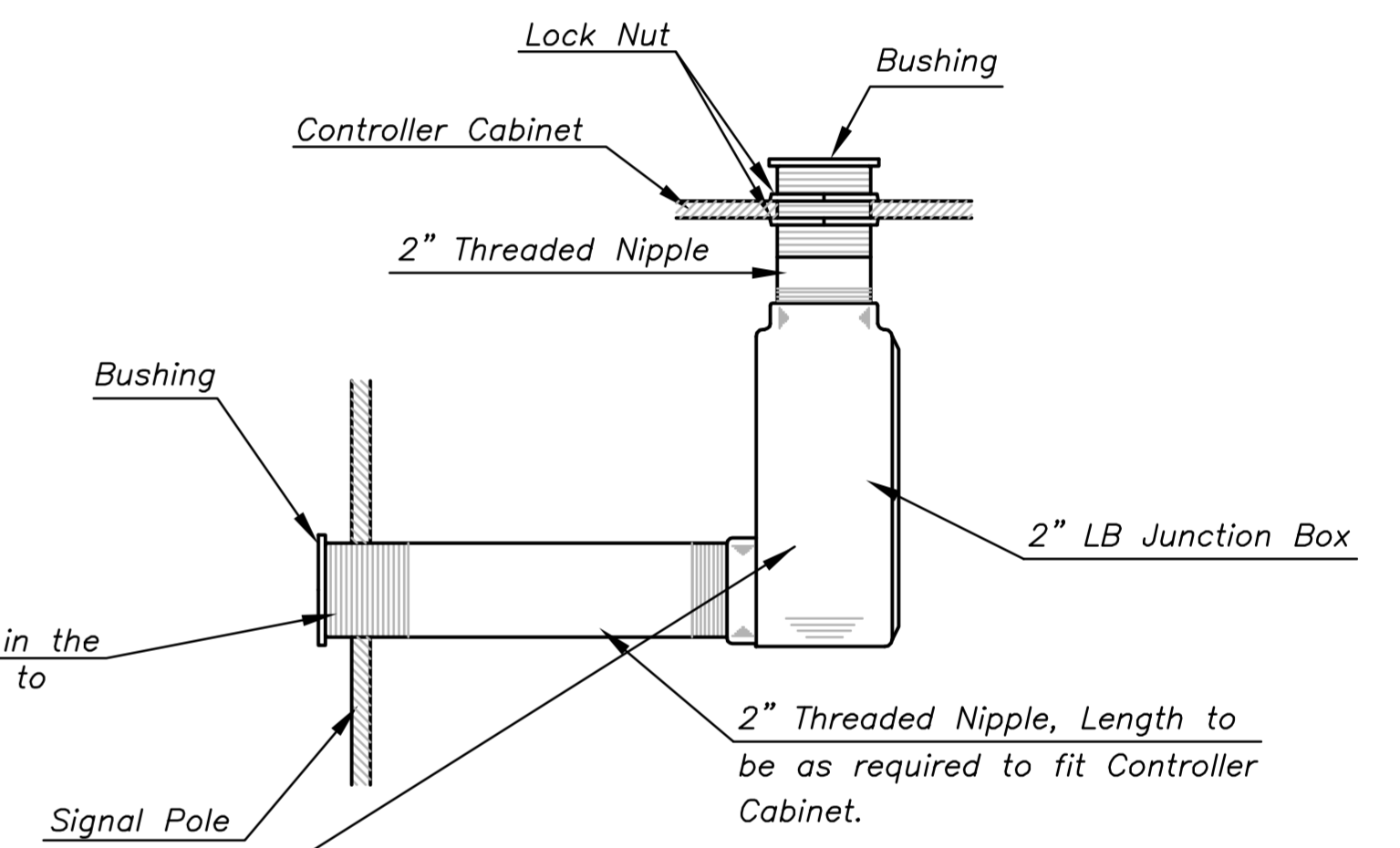


STANDARD CONCRETE BASE DETAIL

Use Keystone "No-Weld Number 1 Anti-Seize Compound" on all bolts & nuts.

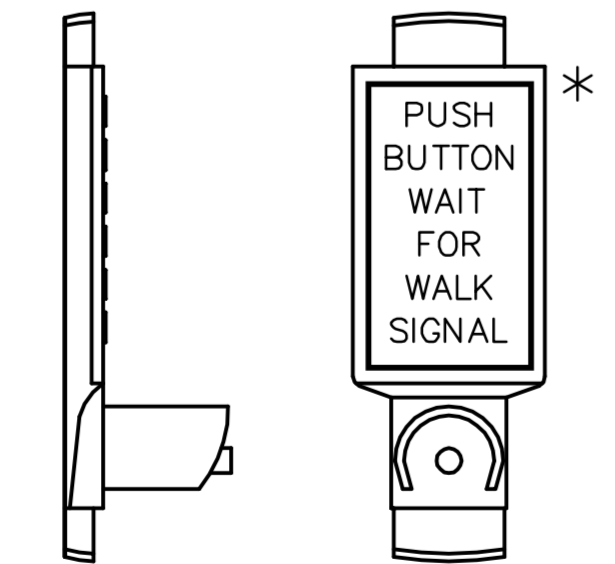


ANCHOR BOLT DETAIL

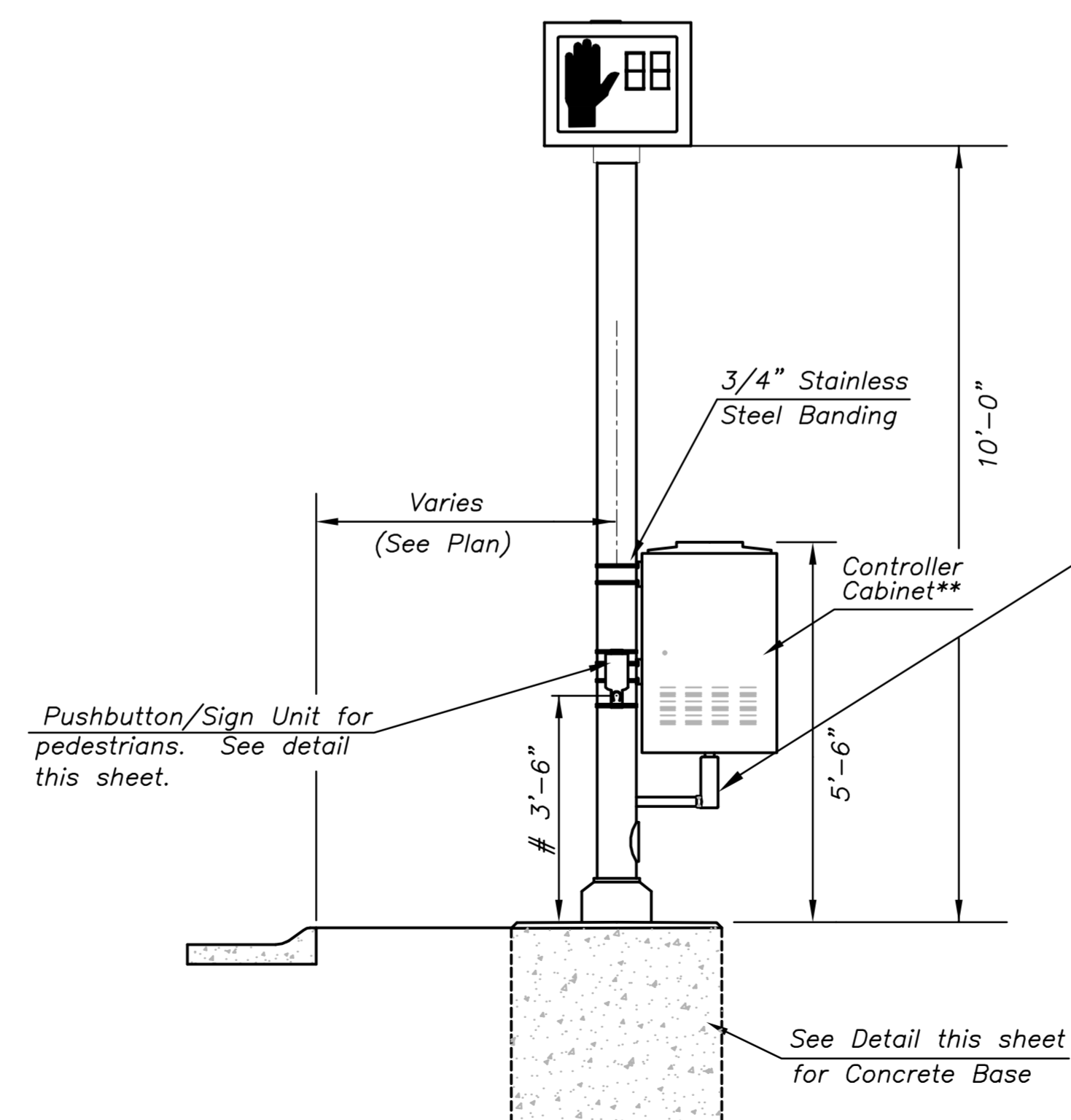


* NOTE: MESSAGE TO BE CAST WITH HOUSING (ONE PIECE)

INSTALL PEDESTRIAN PUSHBUTTON UNDERNEATH CORRESPONDING PEDESTRIAN SIGNAL HEAD ON SIDE OF POLE NEAREST CROSSWALK. UNIT SHALL BE FIRMLY ATTACHED TO THE SIDE OF POLE WITH 3/4" STEEL BANDS. SHARP ENDS SHALL BE FOLDED UNDER TO PREVENT INJURY TO PEDESTRIANS.



PEDESTRIAN PUSHBUTTON/SIGN UNIT DETAIL



TRAFFIC SIGNAL PEDESTAL

From Sidewalk Finish Grade to Center of Pushbutton.

** Controller Cabinet will not be installed with this Project.

Drawing File: E:\Projects\Tyler Road - 21st to 29th\Traffic\Sig Pole Details.dwg

Design: CoW
 Drawn: CoW
 Approved: TPV
 Scale: NOTED

Project No. 10-12E575 CAPITAL IMPROVEMENT PROJECT
Pedestrian Signal Pole Detail
 TYLER ROAD - 21ST STREET NORTH TO 29TH STREET NORTH

Baughman Company, P.A.
 315 Ellis St. Wichita, KS 67211 P. 316-262-7271 F. 316-262-0149
 ENGINEERING | SURVEYING | PLANNING | LANDSCAPE ARCHITECTURE

July 2011
 SHEET 59 OF 100