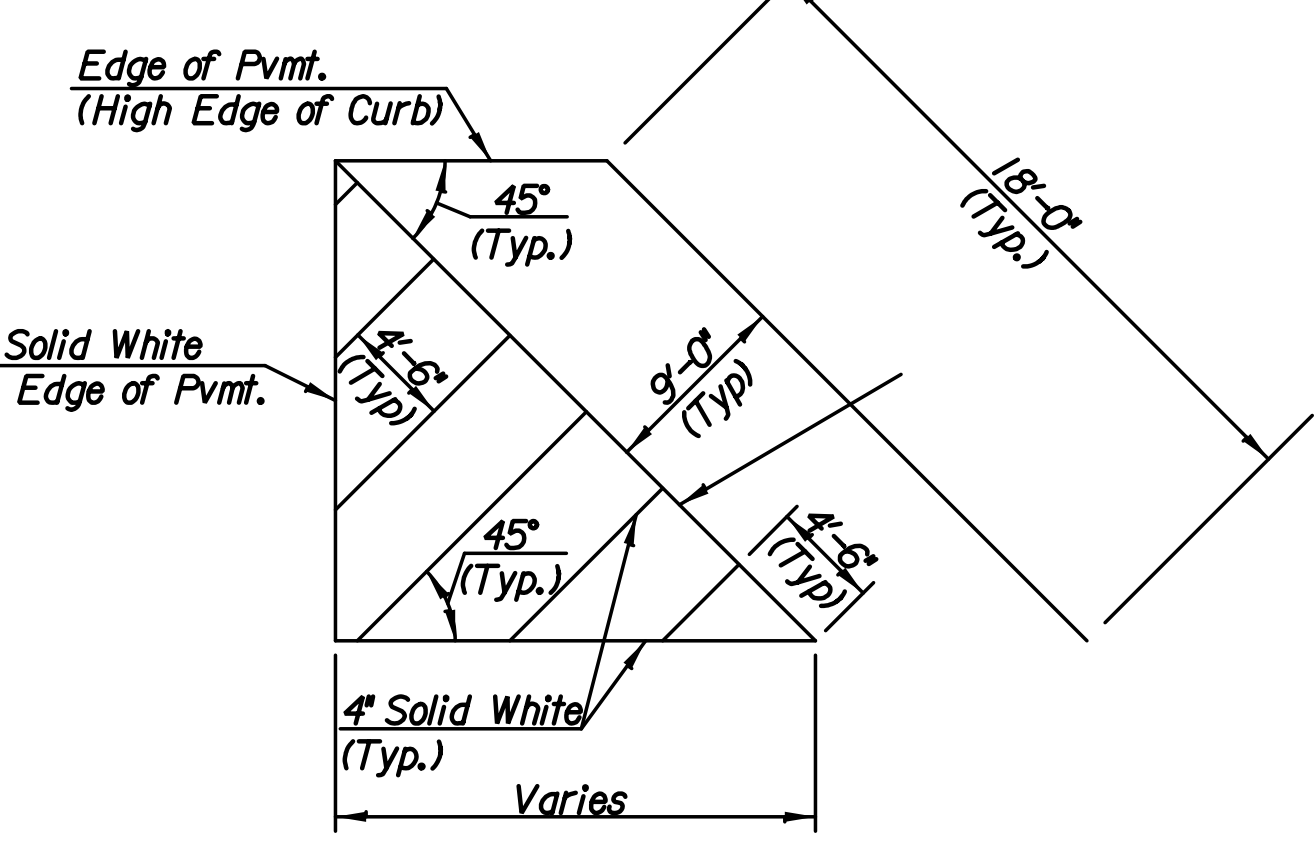
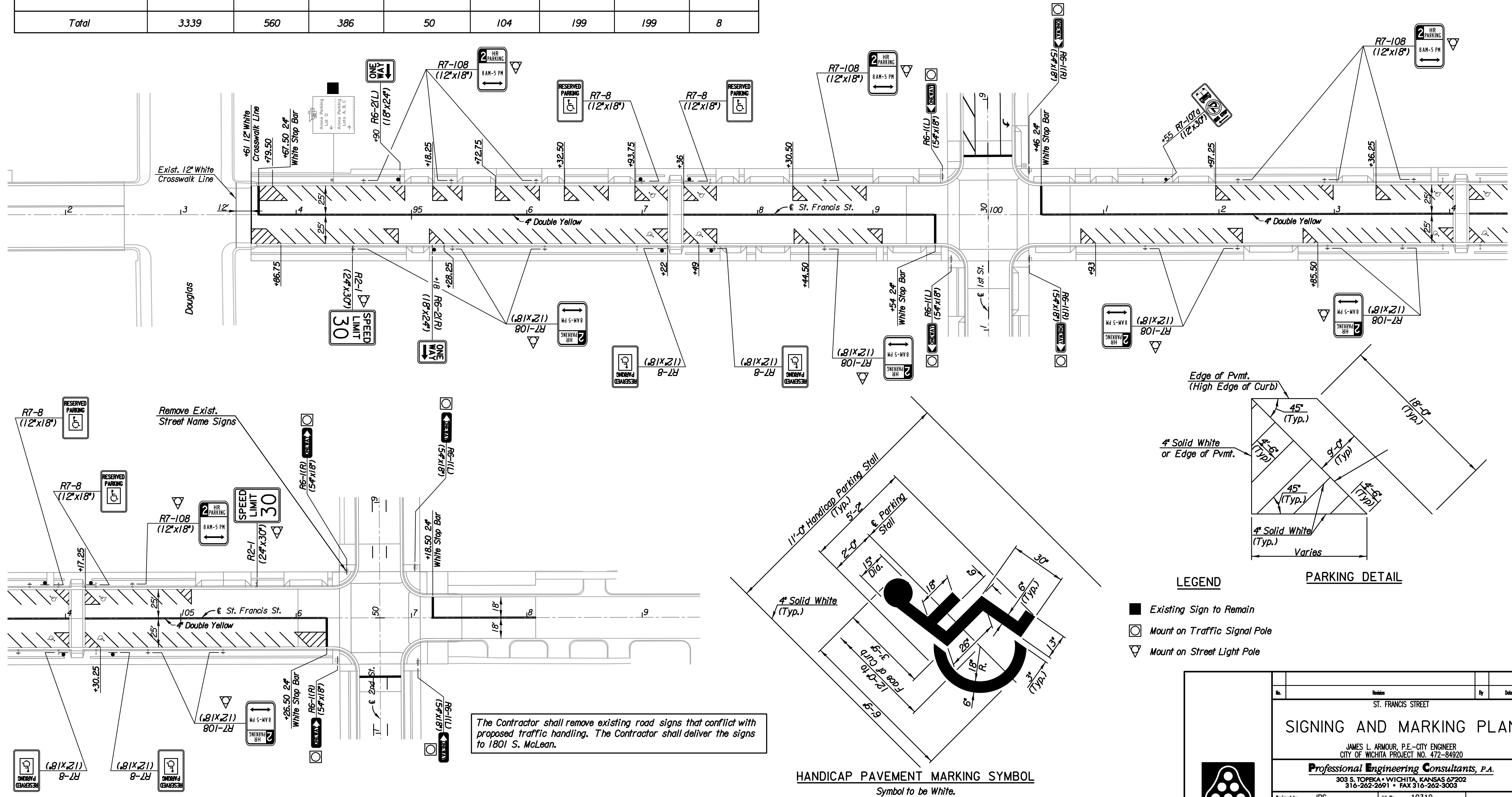
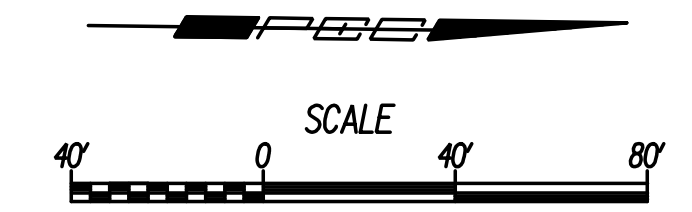


SUMMARY OF PAVEMENT MARKINGS

LOCATION	4" Solid White Parking Line (ft)	6" Broken White Lane Line (ft)	6" Solid White Lane Line (ft)	12" Solid White Crosswalk Line (ft)	12" Solid White Diagonal (ft)	24" Solid White Stop Line (ft)	4" Solid Yellow Double Line (ft)	Handicap Pavement Marking Symbol
St. Francis	3339	-	-	50	-	121	2450	8
1st St.	-	360	386	-	104	42	-	-
2nd St.	-	200	-	-	-	36	-	-
Total	3339	560	386	50	104	199	199	8



- LEGEND**
- Existing Sign to Remain
 - Mount on Traffic Signal Pole
 - ▽ Mount on Street Light Pole

The Contractor shall remove existing road signs that conflict with proposed traffic handling. The Contractor shall deliver the signs to 1801 S. McLean.

HANDICAP PAVEMENT MARKING SYMBOL
Symbol to be White.

Plotted By: svb Date: 7/14/2011 6:38:11 PM
 FILE: I:\2010\10310\Signing_Marking\10310-SignMark St Francis.dgn

Revision		By	Date
ST. FRANCIS STREET			
SIGNING AND MARKING PLAN			
JAMES L. ARMOUR, P.E. - CITY ENGINEER CITY OF WICHITA PROJECT NO. 472-84920			
Professional Engineering Consultants, P.A. 303 S. TOPEKA - WICHITA, KANSAS 67202 316-262-2691 • FAX 316-262-3003			
Designed by	JPS	Job No.	10310
Drawn by	SVB	Date	July, 2011