

LIGHTING FIXTURE SCHEDULE (P.E.C.)

FIXT. LTR.	MANUFACTURER CATALOG NUMBER	MANUFACTURER CATALOG NUMBER	MANUFACTURER CATALOG NUMBER	MANUFACTURER CATALOG NUMBER	DESCRIPTION	LAMP TYPE	LENS\LOUVER\FINISH	W	L	D
S1	STERNBERG				POLE	150 PMH				
S2	SUN VALLEY LIG CS-3327				HISTORICAL	175W PMH	TYPE II/BLACK			
20" ROUND TAPERED STEEL POLE W/ HANDHOLE & BOLT COVERS. VERIFY POLE TO MEET TOTAL FIXTURE EPA REQMS AT 110 W/ 1.3 GUST FACTOR.										

① MANUFACTURER LISTED IN THIS SCHEDULE WILL BE THE ONLY APPROVED MANUFACTURERS TO BID THE LIGHTING FIXTURES FOR THIS PROJECT. CONTRACTORS AND SUPPLIERS USING PRICING FROM MANUFACTURERS NOT LISTED ON SCHEDULE DO SO AT THEIR OWN RISK.
 ② FIXTURE AND POLE SHALL MATCH FIXTURE ON WEST DOUGLAS IN THE DELANO DISTRICT BY SUN VALLEY LIGHTING. PROVIDE WITH POLE MOUNTED, 20A. 120V. GFCI RECEPTACLE AND WEATHERPROOF CLEAR "IN-USE" COVER MOUNTED ON SIDEWALK SIDE OF POLE. SEE DETAIL 2/E2 FOR ADDITIONAL INFORMATION.
 ③ CATALOG NUMBER (INCLUDES FIXTURE AND POLE): 6590CDPT/2112T5/150MHPMULTI/ROH5-S/FHC/BK

FEEDER SCHEDULE

DESIG.	EQUIPMENT SERVED	CONDUCTORS			GROUND SIZE PER SET	ISOLATED GROUND SIZE	CONDUIT SIZE PER SET	SPARE CONDUIT
		SETS	NO.	SIZE				
1	PANELBOARD:MP1	1	4	#1 AWG CU	#8	---	2" C.	---
2	PANELBOARD:SL1	1	4	#1 AWG CU	#8	---	2" C.	---

- ### GENERAL NOTES
- ALL ELECTRICAL WORK SHALL COMPLY WITH THE LATEST EDITION OF THE NATIONAL ELECTRICAL CODE (NEC) & THE AMERICANS WITH DISABILITIES ACT (ADA).
 - REFER TO RELATED CIVIL DRAWINGS FOR RELATED INFORMATION.
 - REFER TO THE SPECIFICATIONS FOR DATA NOT ON THE DRAWINGS.
 - ALL MOUNTING HEIGHTS TO CENTERLINE OF ITEM UNLESS OTHERWISE NOTED. VERIFY ALL OUTLET LOCATIONS ON THE JOB PRIOR TO ROUGH-IN.
 - CONDUIT RUN W/CONDUCTORS AS INDICATED & GROUND WIRE SIZED PER N.E.C. 250.122. CONDUIT SIZE AS REQUIRED.
 - WHEN INCREASED CONDUCTOR SIZES ARE SHOWN ON THE PLANS, THE LARGER CONDUCTOR SIZE SHALL BE USED THROUGHOUT THE LENGTH OF THE CIRCUIT, INCLUDING NEUTRAL AND GROUND.
 - BRANCH CIRCUITS ARE INDICATED AS ONE CIRCUIT HOME RUNS WITH INDIVIDUAL NEUTRALS. A MAXIMUM OF THREE CIRCUITS MAY BE GROUPED IN A SINGLE CONDUIT. WHERE MULTIPLE CIRCUITS ARE LOCATED IN THE SAME RACEWAY, JUNCTION BOX OR ENCLOSURE, NEUTRALS SHALL BE MARKED OR LABELED TO INDICATE WHICH CIRCUIT THEY ARE ASSOCIATED WITH.
 - LABEL THE FRONT OF EACH RECEPTACLE COVERPLATE WITH PANEL DESIGNATION AND CIRCUIT NUMBER USING CLEAR THERMAL TRANSFER (ELECTRONIC DYMO) LABELS WITH 1/8" HIGH BLACK LETTERS (OR CONTRASTING COLOR IF PLATES ARE BLACK OR BROWN). LABELS SHALL BE SUITABLE FOR INDOOR/OUTDOOR USE. LABEL THE BACK OF EACH LIGHT SWITCH COVERPLATE WITH PANEL DESIGNATION AND CIRCUIT NUMBER USING A FINE BLACK PERMANENT MARKER.

SYMBOL LIST

SYMBOL	DESCRIPTION	MOUNTING
○S2	LIGHT FIXTURE WITH FIXTURE LETTER	POLE
WP	WEATHERPROOF	
UON	UNLESS OTHERWISE NOTED	
□	GROUND MOUNTED JUNCTION BOX	
1	FEEDER DESIGNATION	
↗ #10	CONDUIT HOME RUN, 1 CIRCUIT. 2#10 & 1#12 GRD. GEN. NOTE 5 & 6	CEIL./WALL
↘	CONDUIT RUN 2#12 & 1#12 GRD.-1/2" C.	CEIL./WALL
---	CONDUIT RUN 2#12 & 1#12 GRD.-3/4" C.	EARTH/FLOOR
↗	CONDUIT HOME RUN, 1 CIRCUIT. 2#12 & 1#12 GRD. 1/2" C.	CEIL./WALL
↘	CONDUIT HOME RUN, 2 CIRCUITS. 4#12 & 1#12 GRD. 1/2" C.	CEIL./WALL
↘	CONDUIT HOME RUN, 3 CIRCUITS. 6#12 & 1#12 GRD. 1/2" C.	CEIL./WALL
↘	CONDUIT HOME RUN, 2 CIRCUITS PHASE CONDUCTORS (#12 UON) NEUTRAL CONDUCTOR (#12 UON) SWITCH LEGS (#12 UON) GROUND CONDUCTOR (#12 UON)	CEIL./WALL

PANELBOARD: MP1

208/120 VOLTS, 3 PHASE, 4 WIRE
100 AMP MAIN BKR, SURFACE MTD.
42000 AIC LABELED

CIRC NO.	LOAD V. A.	LOAD TYPE	LOAD DESCRIPTION	AMP SIZE	W/GRD. BUS	AMP SIZE	W/GRD. BUS	LOAD DESCRIPTION	LOAD TYPE	LOAD V. A.	CIRC NO.
1			PANELBOARD: SL1	3	100	A	20	TIMECLOCK, PHOTOCELL	GRD	400	2
3						B	20	SPARE			4
5						C	20	SPARE			6
7			SPACE			A	20	SPARE			8
9			SPACE			B	20	SPARE			10
11			SPACE			C	20	SPARE			12

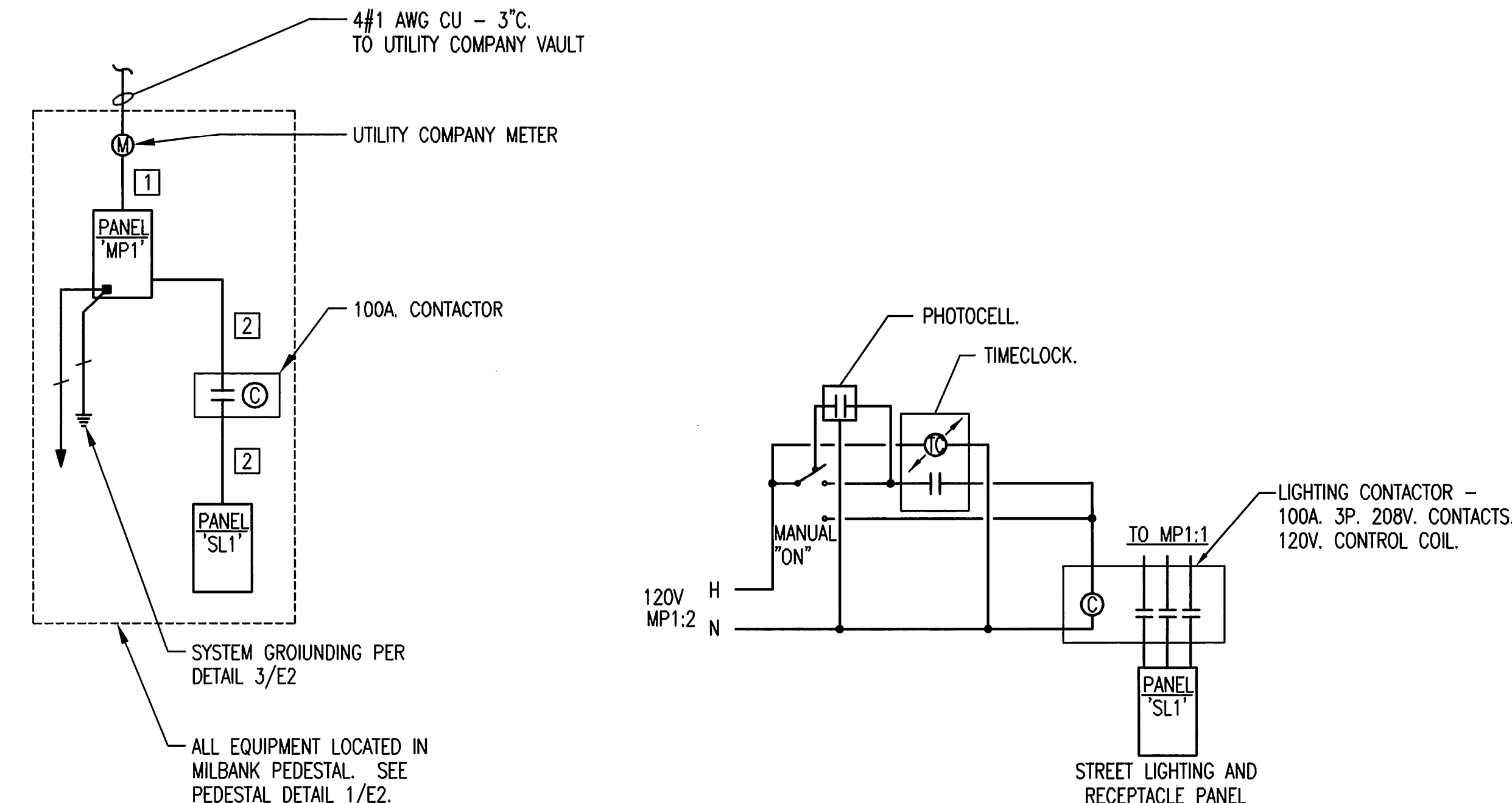
PANELBOARD: SL1

208/120 VOLTS, 3 PHASE, 4 WIRE
100 AMP MLO, SURFACE MTD.
42000 AIC LABELED

CIRC NO.	LOAD V. A.	LOAD TYPE	LOAD DESCRIPTION	AMP SIZE	W/GRD. BUS	AMP SIZE	W/GRD. BUS	LOAD DESCRIPTION	LOAD TYPE	LOAD V. A.	CIRC NO.
1	1350	GRD	STREET LIGHTING	2	20	A	20	REC - SW ST. FRANCIS	GRD	400	2
3			ST. FRANCIS: 1ST TO 1ST-W			B	20	REC - SW ST. FRANCIS	GRD	400	4
5	1350	GRD	STREET LIGHTING	2	20	C	20	REC - SW ST. FRANCIS	GRD	400	6
7			ST. FRANCIS: 1ST TO 1ST-E			A	20	REC - SE ST. FRANCIS	GRD	400	8
9	1350	GRD	STREET LIGHTING	2	20	B	20	REC - SE ST. FRANCIS	GRD	400	10
11			1ST: W OF ST. FRANCIS			C	20	REC - SE ST. FRANCIS	GRD	400	12
13	1750	GRD	STREET LIGHTING	2	20	A	20	REC - 1ST ST. SOUTH	GRD	600	14
15			ST. FRANCIS: 1ST TO 2ND-W			B	20	REC - 1ST ST. NORTH	GRD	600	16
17	1750	GRD	STREET LIGHTING	2	20	C	20	REC - NW ST. FRANCIS	GRD	400	18
19			ST. FRANCIS: 1ST TO 2ND-E			A	20	REC - NW ST. FRANCIS	GRD	400	20
21	900	GRD	STREET LIGHTING	2	20	B	20	REC - NW ST. FRANCIS	GRD	400	22
23			2ND: W OF ST. FRANCIS			C	20	REC - NE ST. FRANCIS	GRD	400	24
25			SPACE			A	20	REC - NE ST. FRANCIS	GRD	400	26
27			SPACE			B	20	REC - NE ST. FRANCIS	GRD	400	28
29			SPACE			C	20	REC - 2ND ST. SOUTH	GRD	400	30
31			SPACE			A	20	REC - 2ND ST. NORTH	GRD	400	32
33			SPACE			B	20	SPARE			34
35			SPACE			C	20	SPARE			36
37			SPACE			A	20	SPARE			38
39			SPACE			B	20	SPARE			40
41			SPACE			C	20	SPARE			42

ELECTRICAL SHEET INDEX

SHEET NO.	DESCRIPTION
E1	ELECTRICAL GENERAL NOTES & SYMBOLS
E2	ELECTRICAL DETAILS
E3	ELEC. STREET PLAN STA. 92+00 TO STA. 98+00
E4	ELEC. STREET PLAN STA. 98+00 TO STA. 104+00
E5	ELEC. STREET PLAN STA. 104+00 TO STA. 110+00
E6	ELEC. STREET PLAN STA. 28+00 TO STA. 34+00
E7	ELEC. STREET PLAN STA. 48+00 TO STA. 54+00



① CONTROL WIRING DIAGRAMS
NO SCALE

ST. FRANCIS STREET
ELECTRICAL
GENERAL NOTES & SYMBOLS
 JAMES L. ARMOUR, P.E. - CITY ENGINEER
 CITY OF WICHITA PROJECT NO. 472-84920
PEC PROFESSIONAL ENGINEERING CONSULTANTS, P.A.
 303 SOUTH TOPEKA WICHITA, KS 67202
 316-262-2691 www.pec1.com

No.	Revision	By	Date

Designed by **SMS** Job No. **10310** Sht. **E1** of **7**
 Drawn by **ADM** Date **JULY 2011**

Saved 07-14-2011 3:54:56 PM by ADM
 Plot Scale 1:20 07-14-2011 3:55:16 PM by ADM
 E:\2010\10310\10310-01