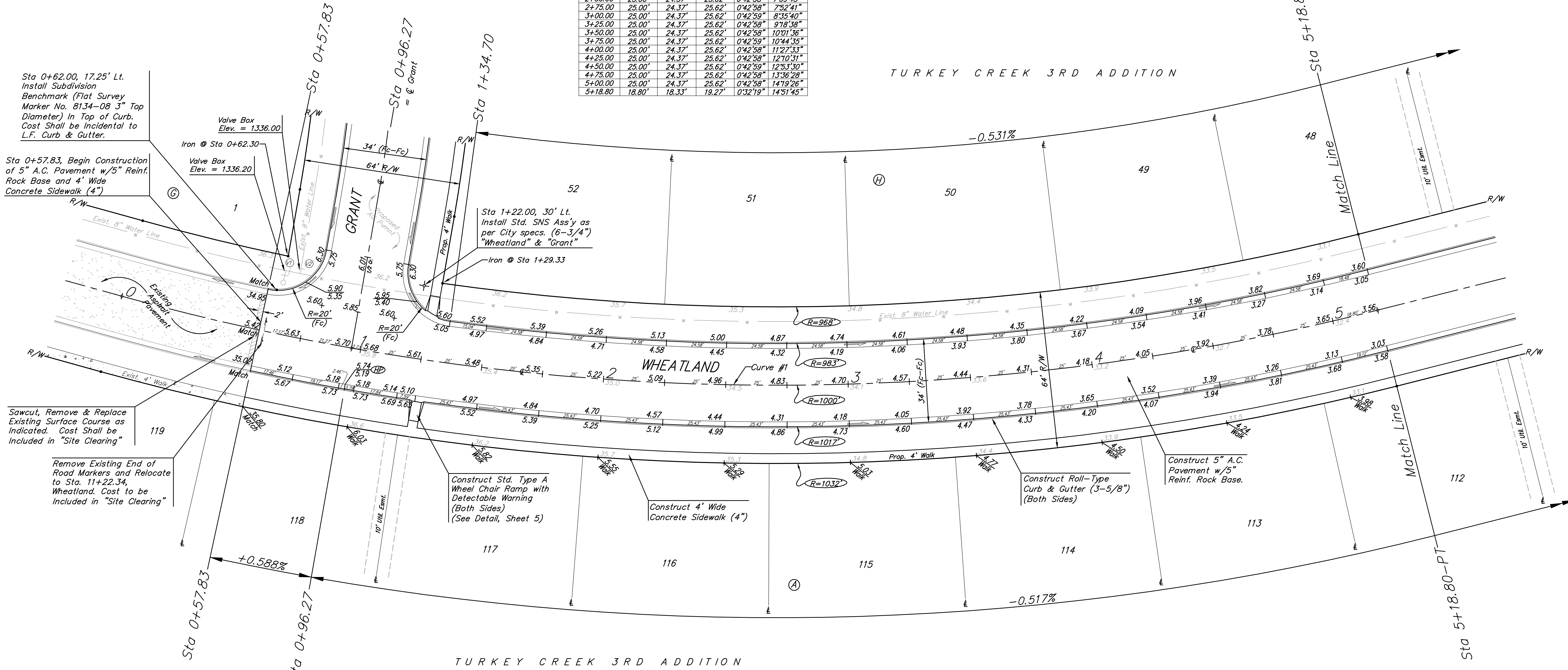
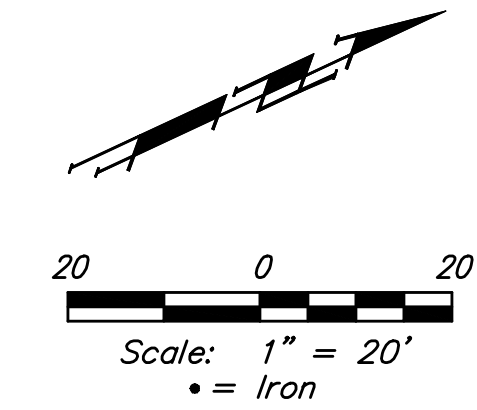


BENCHMARKS:
 BM #1: 135th St. W. & Pawnee
 City of Wichita Benchmark Disc,
 northeast corner of intersection on SW
 corner of concrete base of high line
 pole.
 Elev. = 1359.65 NGVD29

BM #2: City of Wichita Benchmark Disc,
 0.4 Mi. South of Kellogg on 135th St.
 W., west side of concrete base for high
 line pole, west of K.G.&E. Substation,
 135'± south of railroad tracks on east
 side of 135th St. W.
 Elev. = 1367.77 NGVD29

Station	Arc	Face Chord Lengths		Defl.	Total Defl.
		8' Left	8' Right		
0+00.00	-	-	-	0'00"00"	0'00"00"
0+25.00	25.00'	24.37'	25.62'	0'42"58"	0'42"58"
0+50.00	25.00'	24.37'	25.62'	0'42"59"	1'25"57"
0+75.00	25.00'	24.37'	25.62'	0'42"59"	2'08"55"
1+00.00	25.00'	24.37'	25.62'	0'42"59"	2'51"53"
1+25.00	25.00'	24.37'	25.62'	0'42"59"	3'34"52"
1+50.00	25.00'	24.37'	25.62'	0'42"59"	4'17"50"
1+75.00	25.00'	24.37'	25.62'	0'42"59"	5'00"48"
2+00.00	25.00'	24.37'	25.62'	0'42"59"	5'43"46"
2+25.00	25.00'	24.37'	25.62'	0'42"59"	6'26"45"
2+50.00	25.00'	24.37'	25.62'	0'42"59"	7'09"43"
2+75.00	25.00'	24.37'	25.62'	0'42"59"	7'52"41"
3+00.00	25.00'	24.37'	25.62'	0'42"59"	8'35"40"
3+25.00	25.00'	24.37'	25.62'	0'42"59"	9'18"38"
3+50.00	25.00'	24.37'	25.62'	0'42"59"	10'01"36"
3+75.00	25.00'	24.37'	25.62'	0'42"59"	10'44"35"
4+00.00	25.00'	24.37'	25.62'	0'42"59"	11'27"33"
4+25.00	25.00'	24.37'	25.62'	0'42"59"	12'10"31"
4+50.00	25.00'	24.37'	25.62'	0'42"59"	12'53"30"
4+75.00	25.00'	24.37'	25.62'	0'42"59"	13'36"28"
5+00.00	25.00'	24.37'	25.62'	0'42"58"	14'19"26"
5+18.80	18.80'	18.33'	19.27'	0'32"19"	14'51"45"



Sta 0+62.00, 17.25' Lt.
 Install Subdivision
 Benchmark (Flat Survey
 Marker No. 8134-08 3" Top
 Diameter) in Top of Curb.
 Cost Shall be Incidental to
 L.F. Curb & Gutter.

Sta 0+57.83, Begin Construction
 of 5" A.C. Pavement w/5" Reinf.
 Rock Base and 4' Wide
 Concrete Sidewalk (4")

Valve Box
 Elev. = 1336.00
 Iron @ Sta 0+62.30

Valve Box
 Elev. = 1336.20

Sta 1+22.00, 30' Lt.
 Install Std. SNS Ass'y as
 per City specs. (6-3/4")
 "Wheatland" & "Grant"

Iron @ Sta 1+29.33

Sawcut, Remove & Replace
 Existing Surface Course as
 Indicated. Cost Shall be
 Included in "Site Clearing"

Remove Existing End of
 Road Markers and Relocate
 to Sta. 11+22.34,
 Wheatland. Cost to be
 Included in "Site Clearing"

Construct Std. Type A
 Wheel Chair Ramp with
 Detectable Warning
 (Both Sides)
 (See Detail, Sheet 5)

Construct 4' Wide
 Concrete Sidewalk (4")

Construct Roll-Type
 Curb & Gutter (3-5/8")
 (Both Sides)

Construct 5" A.C.
 Pavement w/5"
 Reinf. Rock Base.

Roll type curb & gutter to
 be constructed on the pavement
 on this sheet.
 Top of curb elevation are given
 for full height curb.

	Turkey Creek 3rd Addition - Phase II	
	WHEATLAND STA 0+57.83 TO STA 5+18.80	
<small>Baughman Company, P.A. 315 Ellis St. Wichita, KS 67211 P 316-262-7771 F 316-262-0149 ENGINEERING SURVEYING PLANNING LANDSCAPE ARCHITECTURE</small>		
PROJECT NUMBER 472-84487	DESIGN JAK	DRAWN TMS/JAK
REVISIONS:	APPROVED DATE 7/26/11	SCALE Noted SHEET 6 OF 42