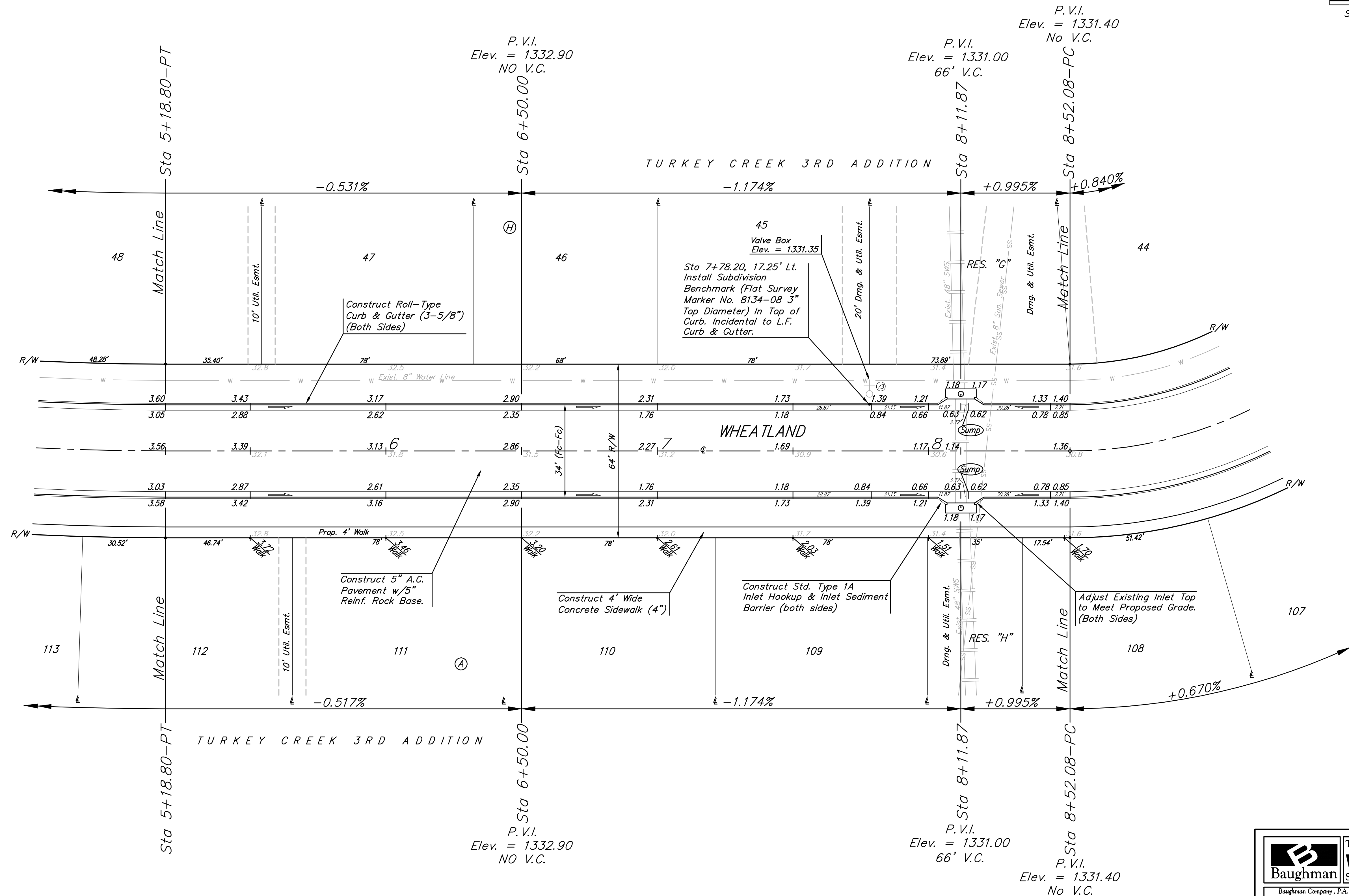
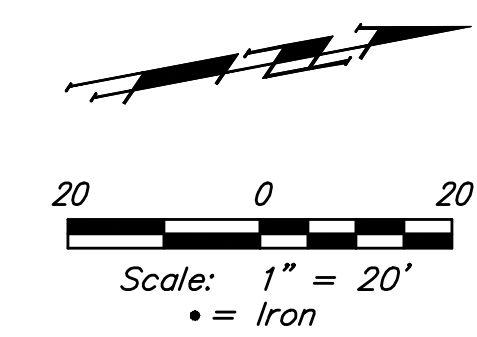


**BENCHMARKS:**  
 BM #1: 135th St. W. & Pawnee  
 City of Wichita Benchmark Disc,  
 northeast corner of intersection on SW  
 corner of concrete base of high line  
 pole.  
 Elev. = 1359.65 NGVD29

BM #2: City of Wichita Benchmark Disc,  
 0.4 Mi. South of Kellogg on 135th St.  
 W., west side of concrete base for high  
 line pole, west of K.G.&E. Substation,  
 135'± south of railroad tracks on east  
 side of 135th St. W.  
 Elev. = 1367.77 NGVD29



P.V.I.  
 Elev. = 1332.90  
 NO V.C.

P.V.I.  
 Elev. = 1331.00  
 66' V.C.

P.V.I.  
 Elev. = 1331.40  
 No V.C.

P.V.I.  
 Elev. = 1332.90  
 NO V.C.

P.V.I.  
 Elev. = 1331.00  
 66' V.C.

P.V.I.  
 Elev. = 1331.40  
 No V.C.

Roll type curb & gutter to  
 be constructed on the pavement  
 on this sheet.  
 Top of curb elevation are given  
 for full height curb.

	Turkey Creek 3rd Addition - Phase II <b>WHEATLAND</b> STA 5+18.80 TO STA 8+52.08	
	<small>Baughman Company, P.A. 315 Ellis St. Wichita, KS 67211 P 3163627771 F 3163620149          ENGINEERING   SURVEYING   PLANNING   LANDSCAPE ARCHITECTURE</small>	
PROJECT NUMBER 47284487	DESIGN JAK	DRAWN TMS/JAK
REVISIONS:	APPROVED 7/26/11	DATE 7/26/11
	SCALE Noted	SHEET <b>7 OF 42</b>