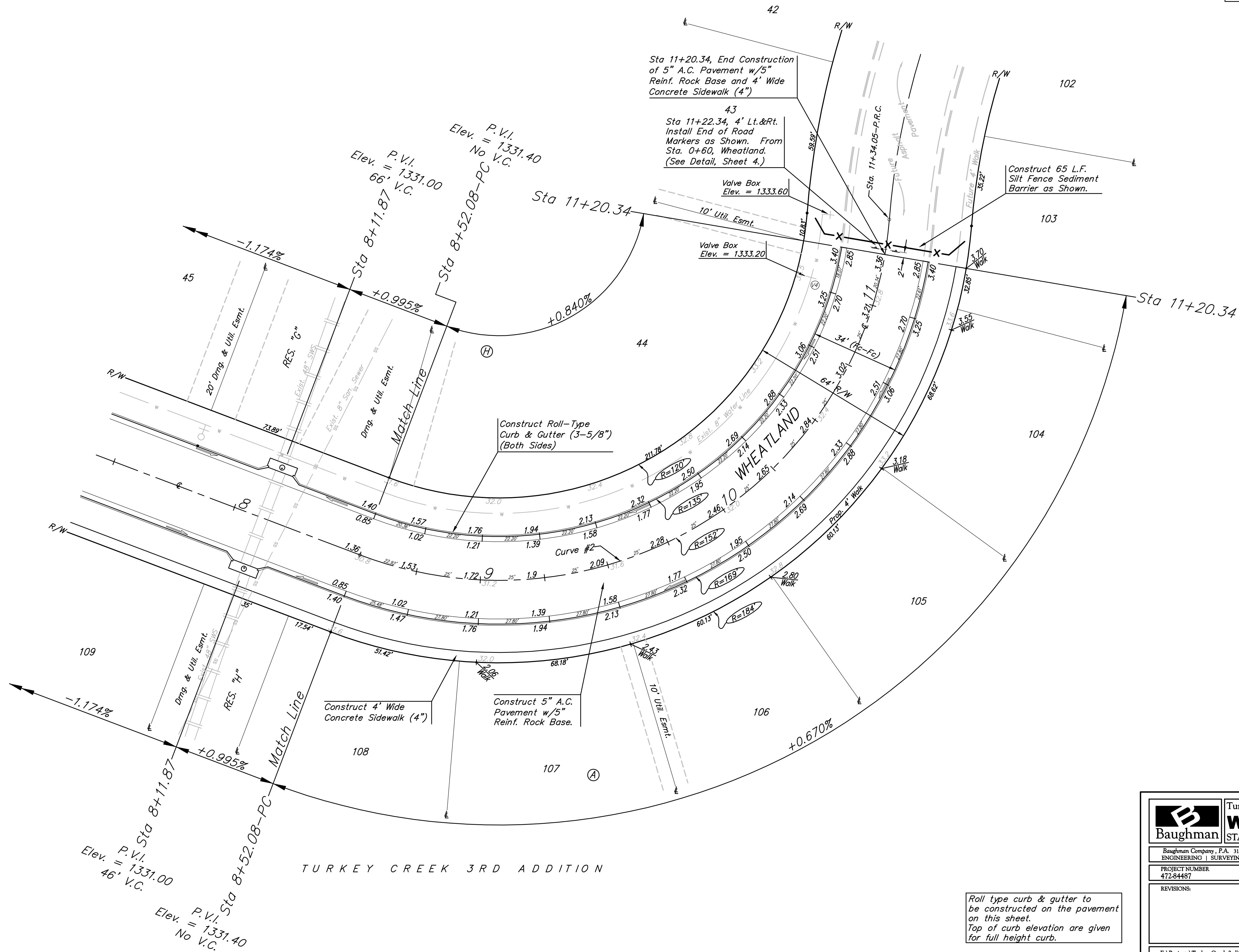
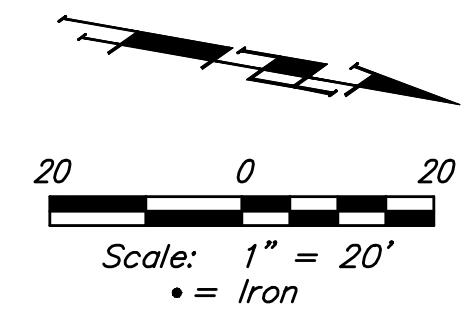


**BENCHMARKS:**  
 BM #1: 135th St. W. & Pawnee  
 City of Wichita Benchmark Disc,  
 northeast corner of intersection on SW  
 corner of concrete base of high line  
 pole.  
 Elev. = 1359.65 NGVD29

BM #2: City of Wichita Benchmark Disc,  
 0.4 Mi. South of Kellogg on 135th St.  
 W., west side of concrete base for high  
 line pole, west of K.G.&E. Substation,  
 135'± south of railroad tracks on east  
 side of 135th St. W.  
 Elev. = 1367.77 NGVD29

TURKEY CREEK 3RD ADDITION



Curve #2  
 Curve Data Based on Centerline  
 Rad. = 152' Delta = 106°17'15\"/>

Station	Arc	8' Left	8' Right	Defl.	Total Defl.
8+52.08	-	-	-	0°00'00\"/>	

Roll type curb & gutter to be constructed on the pavement on this sheet.  
 Top of curb elevation are given for full height curb.

		Turkey Creek 3rd Addition - Phase II	
		<b>WHEATLAND</b> STA 8+52.08 TO STA 11+20.34	
<small>Baughman Company, P.A. 315 Ellis St. Wichita, KS 67211 P 316-262-7271 F 316-262-0149          ENGINEERING   SURVEYING   PLANNING   LANDSCAPE ARCHITECTURE</small>			
PROJECT NUMBER 472-84487	DESIGN JAK	DRAWN TMS/JAK	DATE 7/26/11
REVISIONS:	SCALE Noted SHEET		
			8 OF 42