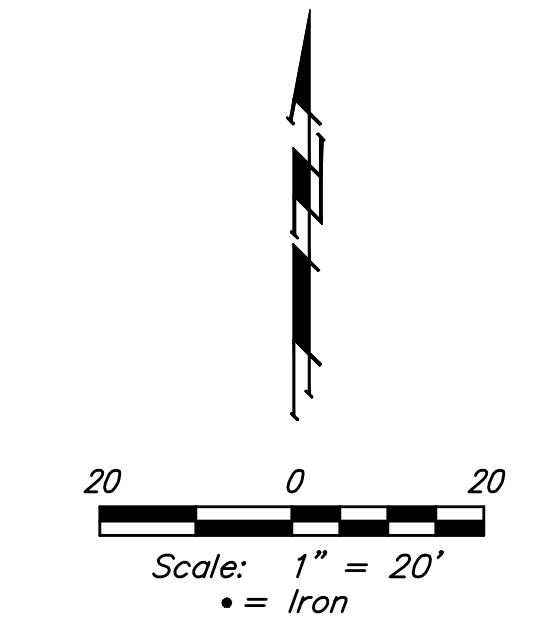
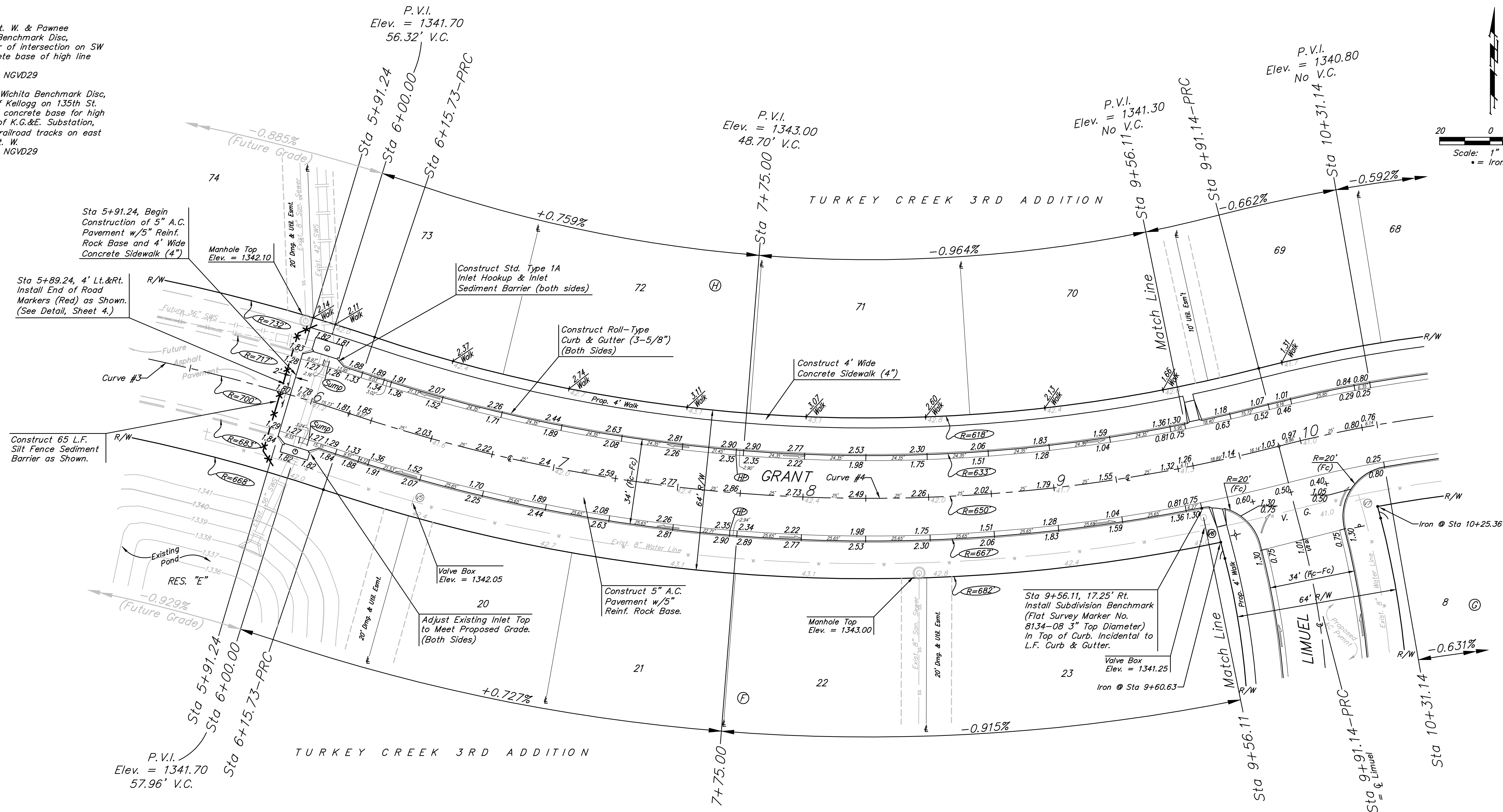


BENCHMARKS:
 BM #1: 135th St. W. & Pawnee
 City of Wichita Benchmark Disc,
 northeast corner of intersection on SW
 corner of concrete base of high line
 pole.
 Elev. = 1359.65 NGVD29

BM #2: City of Wichita Benchmark Disc,
 0.4 Mi. South of Kellogg on 135th St.
 W., west side of concrete base for high
 line pole, west of K.G.&E. Substation,
 135'± south of railroad tracks on east
 side of 135th St. W.
 Elev. = 1367.77 NGVD29



Curve #4
 Curve Data Based on Centerline
 Rad. = 650' Delta = 33°05'29" Tangent = 193.10'
 Arc = 375.41' L.C. = 370.21' Def./ft. = 2.64442 Min.

Station	Arc	Face Chord Lengths		Defl.	Total Defl.
		8' Left	8' Right		
6+15.73	-	-	-	0°00'00"	0°00'00"
6+25.00	9.27'	8.91'	9.63'	0°24'31"	0°24'31"
6+50.00	25.00'	24.04'	25.96'	1°06'06"	1°30'37"
6+75.00	25.00'	24.04'	25.96'	1°06'07"	2°36'44"
7+00.00	25.00'	24.04'	25.96'	1°06'07"	3°42'51"
7+25.00	25.00'	24.04'	25.96'	1°06'06"	4°48'57"
7+50.00	25.00'	24.04'	25.96'	1°06'07"	5°55'04"
7+75.00	25.00'	24.04'	25.96'	1°06'07"	7°01'11"
8+00.00	25.00'	24.04'	25.96'	1°06'06"	8°07'17"
8+25.00	25.00'	24.04'	25.96'	1°06'07"	9°13'24"
8+50.00	25.00'	24.04'	25.96'	1°06'06"	10°19'30"
8+75.00	25.00'	24.04'	25.96'	1°06'07"	11°25'37"
9+00.00	25.00'	24.04'	25.96'	1°06'07"	12°31'44"
9+25.00	25.00'	24.04'	25.96'	1°06'06"	13°37'50"
9+50.00	25.00'	24.04'	25.96'	1°06'07"	14°43'57"
9+56.11	6.11'	5.87'	6.34'	0°16'09"	15°00'06"
9+91.14	35.03'	33.68'	36.37'	1°32'38"	16°32'44"

Curve #3
 Curve Data Based on Centerline
 Rad. = 700' Delta = 50°23'54" Tangent = 329.38'
 Arc = 615.73' L.C. = 596.07' Def./ft. = 2.45554 Min.

Station	Arc	Face Chord Lengths		Defl.	Total Defl.
		8' Left	8' Right		
0+00.00	-	-	-	0°00'00"	0°00'00"
5+91.24	591.24'	594.32'	553.33'	24°11'49"	24°11'49"
6+00.00	8.76'	9.07'	8.45'	0°21'30"	24°33'19"
6+15.73	15.73'	16.29'	15.17'	0°38'38"	25°11'57"

Roll type curb & gutter to be constructed on the pavement on this sheet.
 Top of curb elevation are given for full height curb.

Baughman GRANT
 Turkey Creek 3rd Addition - Phase II
 STA 5+91.24 TO STA 9+56.11

PROJECT NUMBER: 472-84487
 DESIGN: JAK
 DRAWN: TMS/JAK
 APPROVED: [Signature]
 DATE: 7/26/11

SCALE: Noted
 SHEET: 9 OF 42

Path: E:\Projects\Turkey Creek 3rd\Engineering\Phase 2\Str. 10-02-E465\09_Sct4.dwg