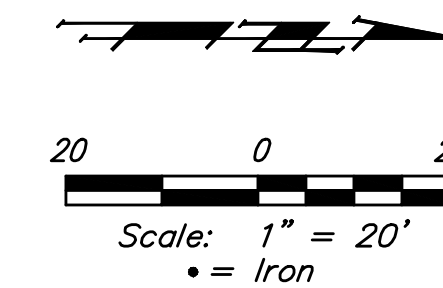


BENCHMARKS:
 BM #1: 135th St. W. & Pawnee
 City of Wichita Benchmark Disc,
 northeast corner of intersection on SW
 corner of concrete base of high line
 pole.
 Elev. = 1359.65 NGVD29

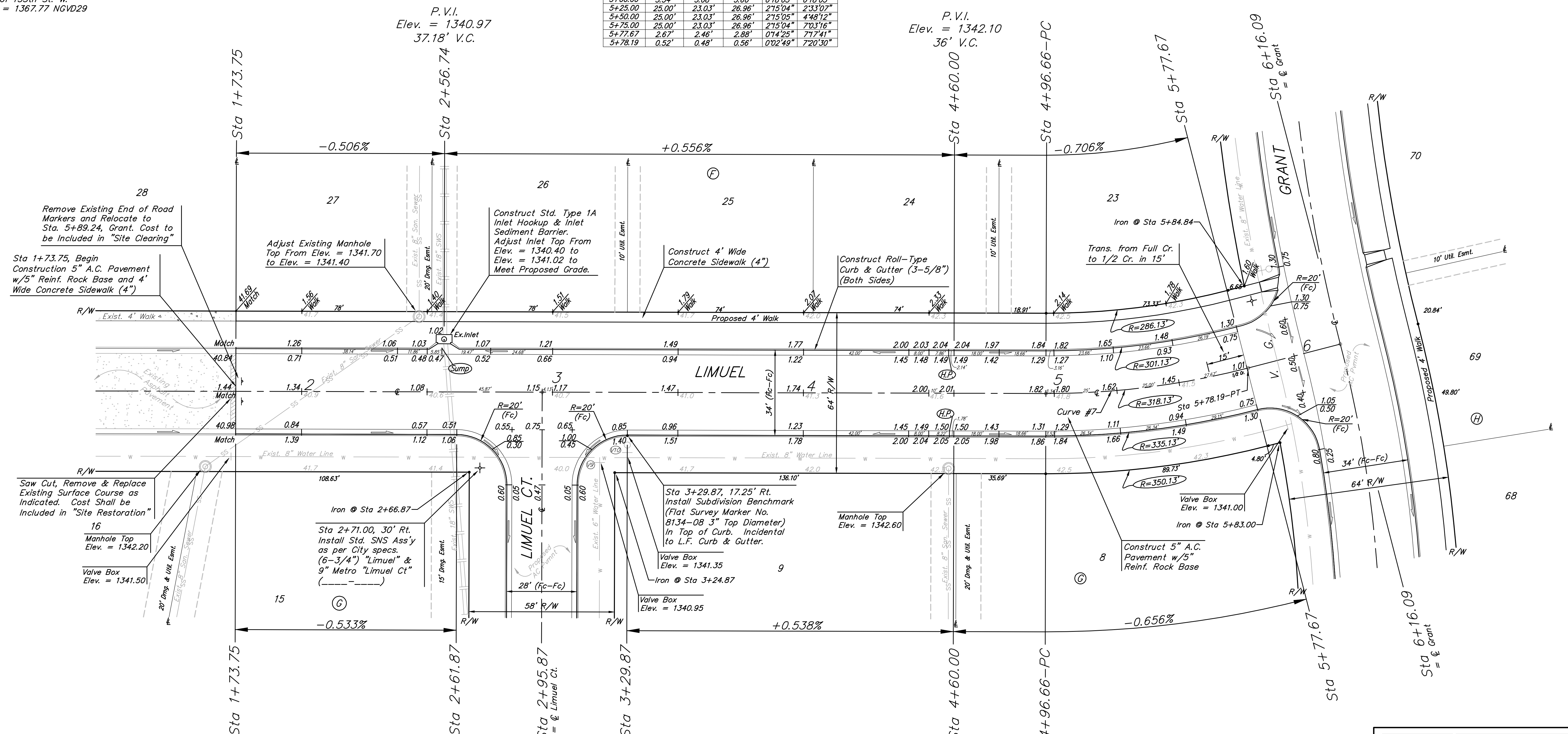
BM #2: City of Wichita Benchmark Disc,
 0.4 Mi. South of Kellogg on 135th St.
 W., west side of concrete base for high
 line pole, west of K.G.&E. Substation,
 135± south of railroad tracks on east
 side of 135th St. W.
 Elev. = 1367.77 NGVD29



Curve #7
 Curve Data Based on Centerline
 Rad. = 318.13' Delta = 14°41'00" Tangent = 40.99'
 Arc = 81.53' L.C. = 81.31' Def./Pt. = 5.40292 Min.

Station	Arc	Face Chord Lengths		Defl.	Total Defl.
		8' Left	8' Right		
4+96.66	-	-	-	0°00'00"	0°00'00"
5+02.00	3.34'	3.08'	3.60'	0°18'03"	0°18'03"
5+25.00	25.00'	23.03'	26.96'	2°15'04"	2°33'07"
5+50.00	25.00'	23.03'	26.96'	2°15'05"	4°48'12"
5+75.00	25.00'	23.03'	26.96'	2°15'04"	7°03'16"
5+77.67	2.67'	2.46'	2.88'	0°14'25"	7°17'41"
5+78.19	0.52'	0.48'	0.56'	0°02'49"	7°20'30"

TURKEY CREEK 3RD ADDITION



TURKEY CREEK 3RD ADDITION

P.V.I.
 Elev. = 1342.10
 36' V.C.

Roll type curb & gutter to be constructed on the pavement on this sheet.
 Top of curb elevation are given for full height curb.

B Baughman	Turkey Creek 3rd Addition - Phase II	
	LIMUEL STA 1+73.75 TO STA 6+16.09	
Baughman Company, P.A. 315 Ellis St. Wichita, KS 67211 P 316-262-7771 F 316-262-0149 ENGINEERING SURVEYING PLANNING LANDSCAPE ARCHITECTURE		
PROJECT NUMBER 47284487	DESIGN JAK	DRAWN TMS/JAK
REVISIONS:	APPROVED	DATE 7/26/11
	SCALE Noted	SHEET 12 OF 42