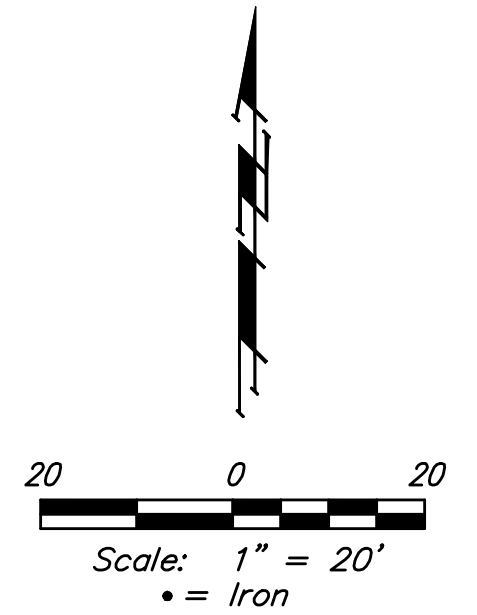
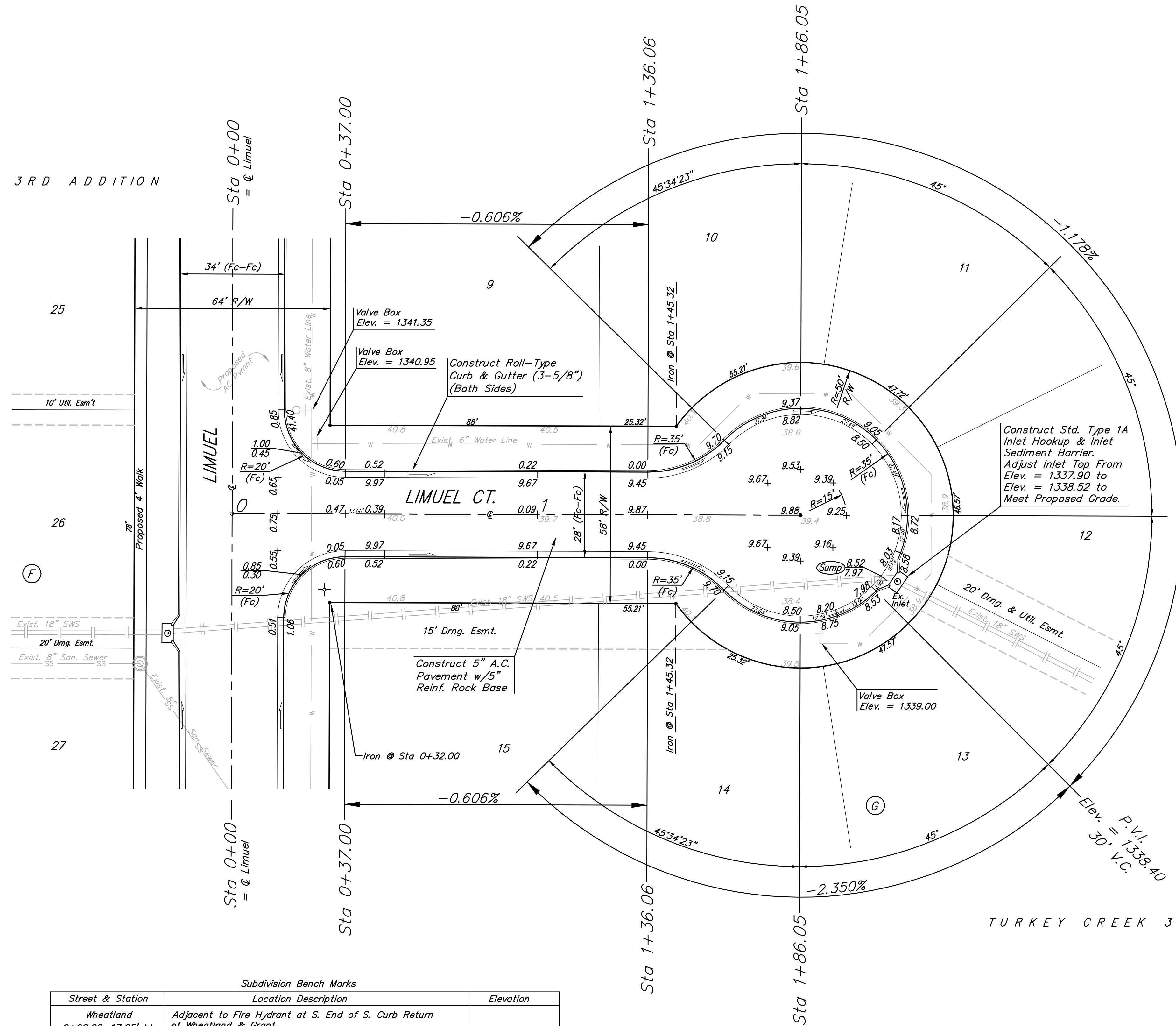


BENCHMARKS:
 BM #1: 135th St. W. & Pawnee
 City of Wichita Benchmark Disc,
 northeast corner of intersection on SW
 corner of concrete base of high line
 pole.
 Elev. = 1359.65 NGVD29

BM #2: City of Wichita Benchmark Disc,
 0.4 Mi. South of Kellogg on 135th St.
 W., west side of concrete base for high
 line pole, west of K.G.&E. Substation,
 135'± south of railroad tracks on east
 side of 135th St. W.
 Elev. = 1367.77 NGVD29



TURKEY CREEK 3RD ADDITION



WATER VALVE LOCATION TABLE

| VALVE NUMBER | STREET | BASELINE STATION | OFFSET DISTANCE | OFFSET DIRECTION |
|--------------|-----------|------------------|-----------------|------------------|
| V1 | Wheatland | 0+63.40 | 24' | Lt. |
| V2 | Wheatland | 0+69.57 | 28' | Lt. |
| V3 | Wheatland | 7+78.20 | 24' | Lt. |
| V4 | Wheatland | 11+03.89 | 26' | Lt. |
| V5 | Grant | 6+49.46 | 26' | Rt. |
| V6 | Grant | 9+56.11 | 24' | Rt. |
| V7 | Grant | 10+18.57 | 28' | Rt. |
| V8 | Grant | 14+26.59 | 24' | Rt. |
| V9 | Limuel | 3+18.87 | 28' | Rt. |
| V10 | Limuel | 3+29.87 | 24' | Rt. |
| V11 | Grant Ct. | 1+10.00 | 21' | Rt. |

Paving Contractor will be responsible to operate all water valves on the project, in the presence of the Inspector, to ensure accessibility to the valves, and that all valves (except blowoffs) are left in the "ON" position when the project is completed.

Subdivision Bench Marks

| Street & Station | Location Description | Elevation |
|----------------------------------|---|-----------|
| Wheatland 0+62.00, 17.25' Lt. | Adjacent to Fire Hydrant at S. End of S. Curb Return of Wheatland & Grant. | |
| Wheatland 7+78.20, 17.25' Lt. | Adjacent to Fire Hydrant at north end of Lot 45, Block H. | |
| Grant 9+56.11, 17.25' Rt. | Adjacent to Fire Hydrant at W. End of W. Curb Return of Grant & Limuel. | |
| Limuel 3+29.87, 17.25' Rt. | Adjacent to Fire Hydrant at N. End of N. Curb Return of Limuel & Limuel Ct. | |
| Grant Ct. 1+10.00, 14.25' Rt. | Adjacent to Fire Hydrant between Lots 53-54, Block H. | |

Roll type curb & gutter to be constructed on the pavement on this sheet.
 Top of curb elevation are given for full height curb.

| | | |
|---|--|--------------------------|
| | Turkey Creek 3rd Addition - Phase II | |
| | LIMUEL CT. STA 0+00 TO STA 1+86.05 | |
| <small>Baughman Company, P.A. 315 Ellis St. Wichita, KS 67211 P 316343-7771 F 3162634149 ENGINEERING SURVEYING PLANNING LANDSCAPE ARCHITECTURE</small> | | |
| PROJECT NUMBER 472-84487 | DESIGN JAK | DRAWN TMS/JAK |
| REVISIONS: | APPROVED [Signature] | DATE 7/26/11 |
| SCALE Noted | | SHEET 13 OF 42 |