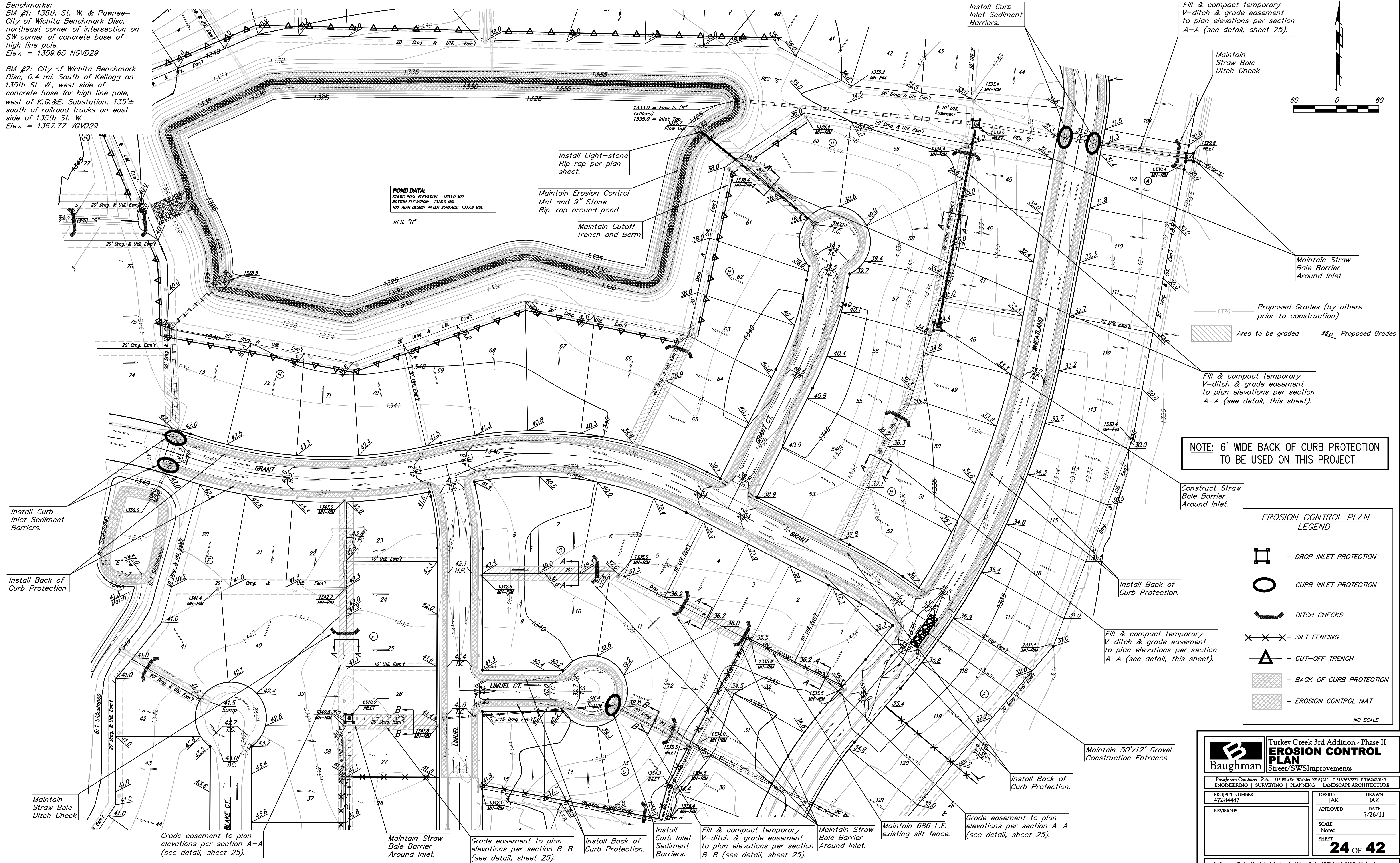
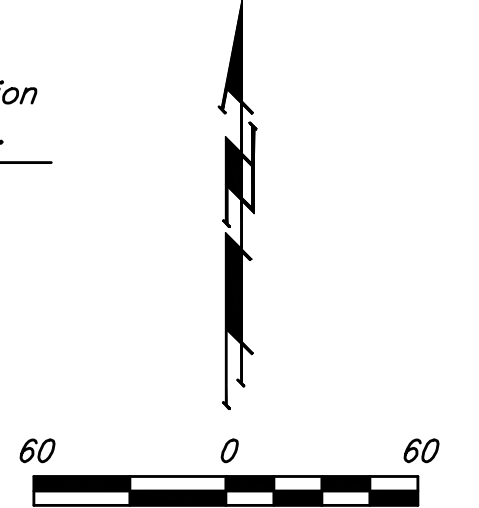


Benchmarks:
 BM #1: 135th St. W. & Pawnee—
 City of Wichita Benchmark Disc,
 northeast corner of intersection on
 SW corner of concrete base of
 high line pole.
 Elev. = 1359.65 NGVD29

BM #2: City of Wichita Benchmark
 Disc, 0.4 mi. South of Kellogg on
 135th St. W., west side of
 concrete base for high line pole,
 west of K.G.&E. Substation, 135'±
 south of railroad tracks on east
 side of 135th St. W.
 Elev. = 1367.77 VGVD29

POND DATA:
 STATIC POOL ELEVATION: 1333.0 MSL
 BOTTOM ELEVATION: 1325.0 MSL
 100 YEAR DESIGN WATER SURFACE: 1337.8 MSL



NOTE: 6' WIDE BACK OF CURB PROTECTION TO BE USED ON THIS PROJECT

EROSION CONTROL PLAN LEGEND

- DROP INLET PROTECTION
- CURB INLET PROTECTION
- DITCH CHECKS
- SILT FENCING
- CUT-OFF TRENCH
- BACK OF CURB PROTECTION
- EROSION CONTROL MAT

NO SCALE

	Turkey Creek 3rd Addition - Phase II EROSION CONTROL PLAN Street/SWS Improvements	
	<small>Baughman Company, P.A. 315 Ellis St. Wichita, KS 67211 P 316342-7771 F 316263-0149 ENGINEERING SURVEYING PLANNING LANDSCAPE ARCHITECTURE</small>	
PROJECT NUMBER 472-84487	DESIGN JAK	DRAWN JAK
REVISIONS:	APPROVED DATE 7/26/11	SCALE Noted SHEET 24 OF 42