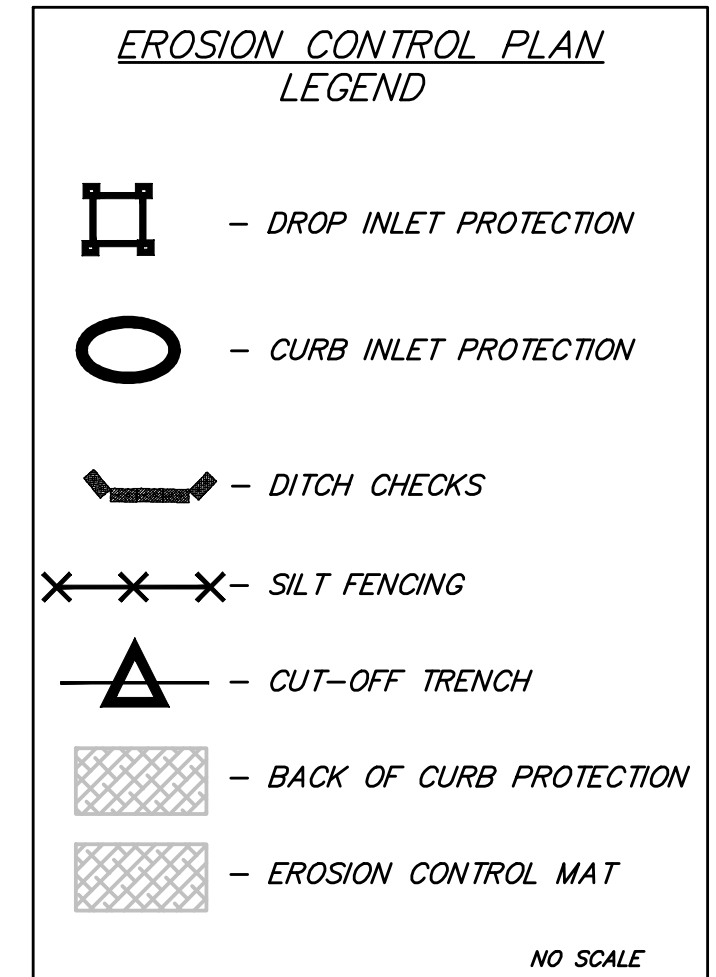
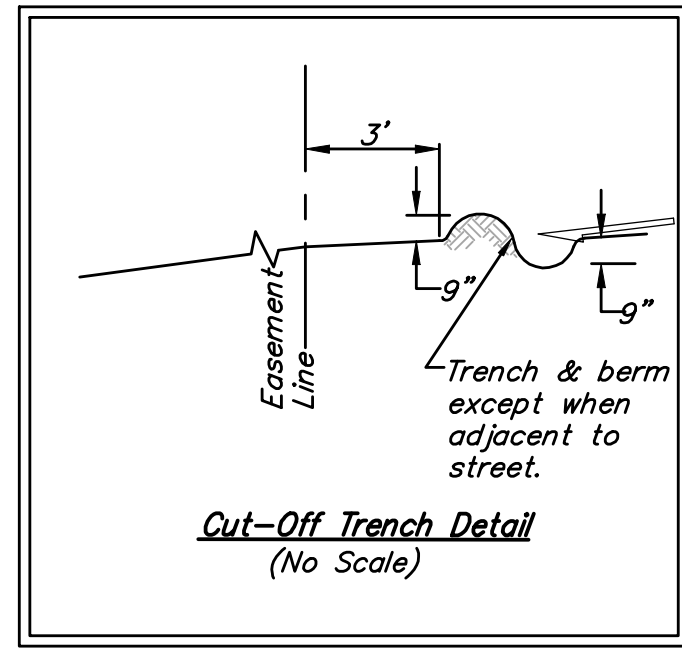


Benchmarks:
 BM #1: 135th St. W. & Pawnee-
 City of Wichita Benchmark Disc,
 northeast corner of intersection on
 SW corner of concrete base of
 high line pole.
 Elev. = 1359.65 NGVD29

BM #2: City of Wichita Benchmark
 Disc, 0.4 mi. South of Kellogg on
 135th St. W., west side of
 concrete base for high line pole,
 west of K.G.&E. Substation, 135±
 south of railroad tracks on east
 side of 135th St. W.
 Elev. = 1367.77 VGVD29



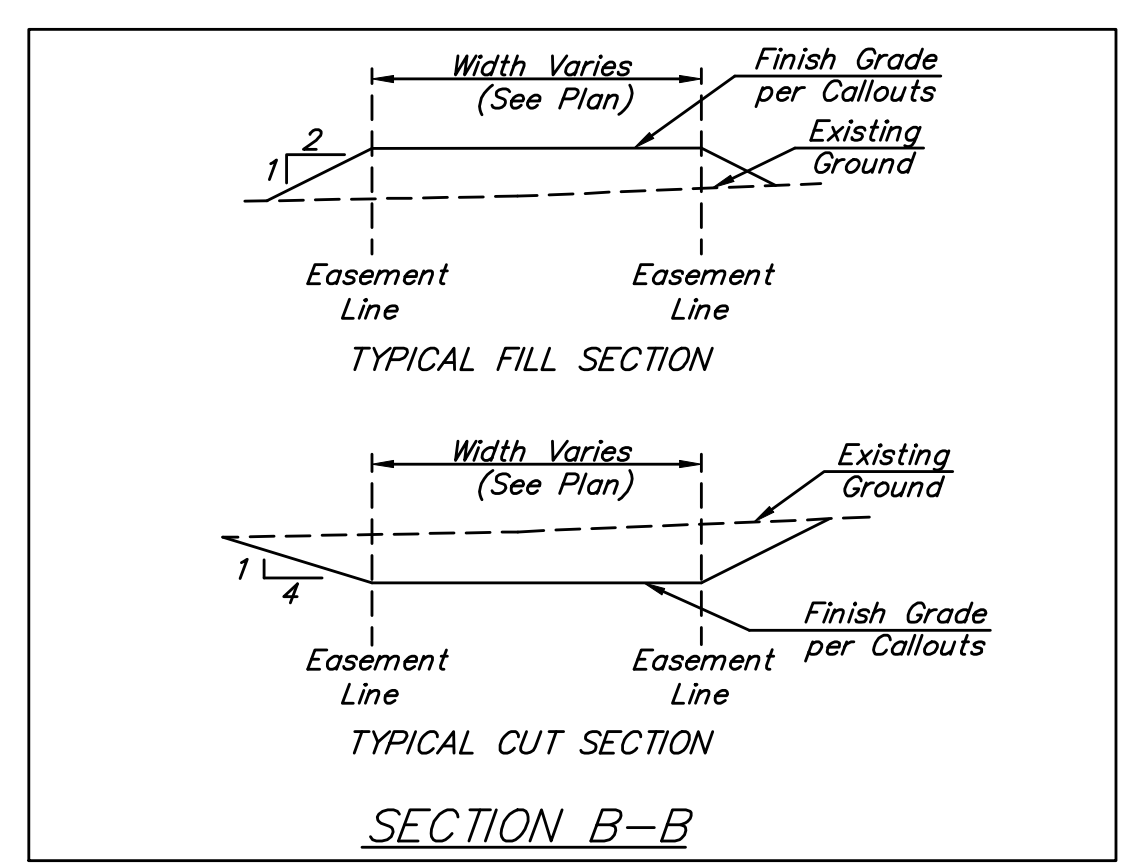
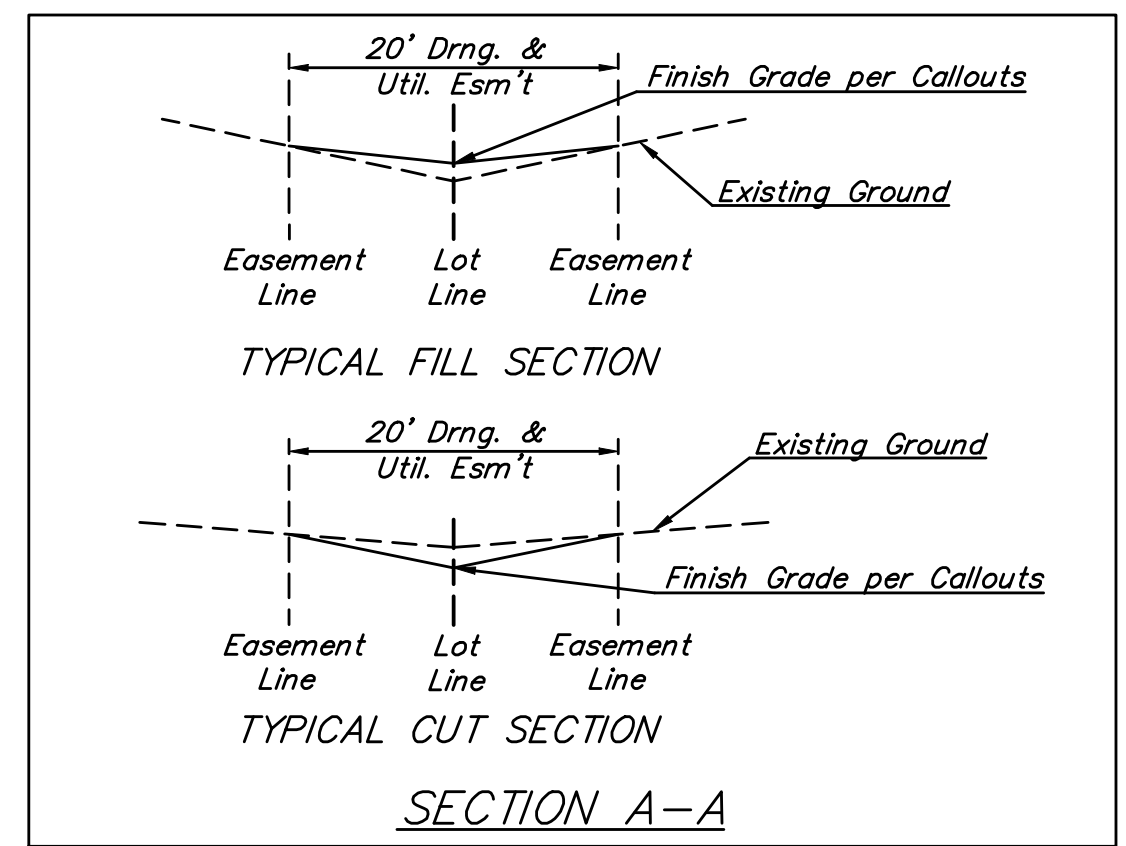
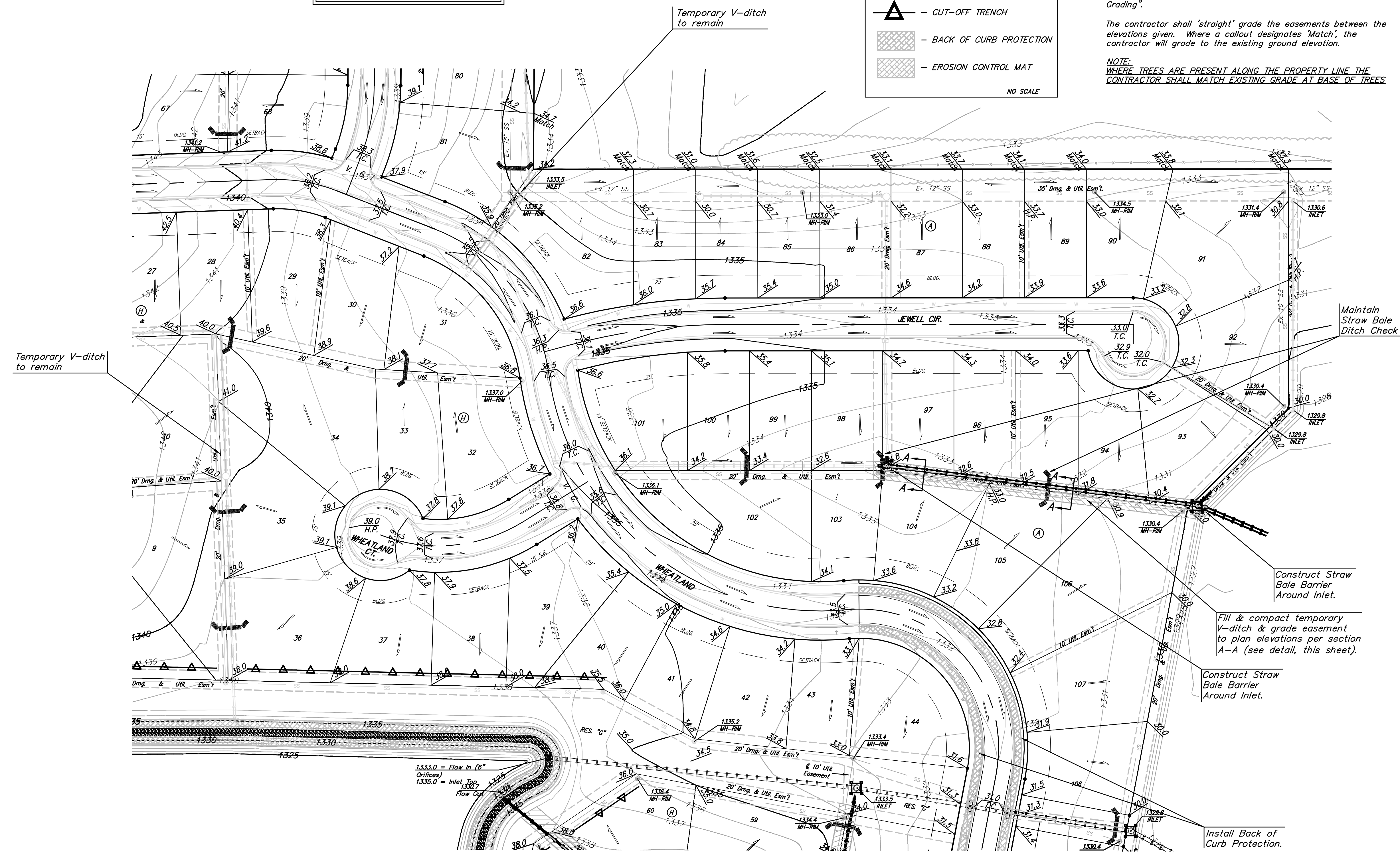
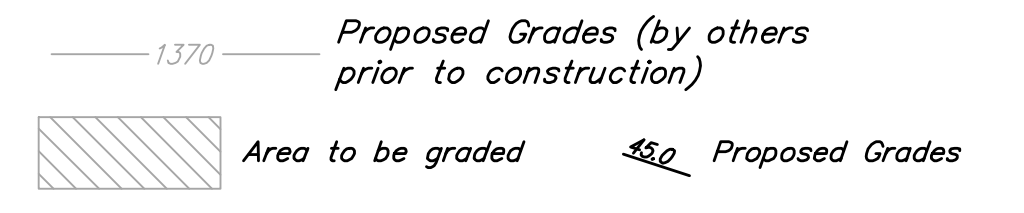
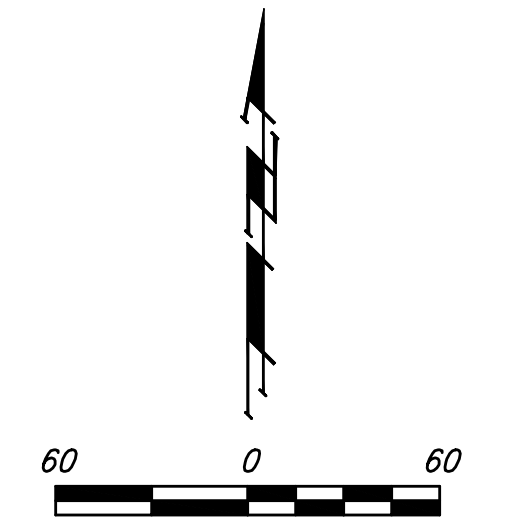
Easement Grading Quantities: (For Information only)
 Excavation: 0 C.Y.
 Loose Fill: 89 C.Y.

Easement Grading quantities reflect proposed grades after mass grading. Mass grading as-built topo was not available at time of street project finalization. Contractor of this project shall satisfy himself with the earthwork quantities as bid for "Easement Grading" prior to bidding. No additional payments or change orders for earthwork will be accepted.

The contractor shall grade the easements as shown to the elevations given on the easement grading plan. All costs associated with filling, compacting, and final grading of easements shall be included in the L.S. bid item "Easement Grading".

The contractor shall 'straight' grade the easements between the elevations given. Where a callout designates 'Match', the contractor will grade to the existing ground elevation.

NOTE:
 WHERE TREES ARE PRESENT ALONG THE PROPERTY LINE THE CONTRACTOR SHALL MATCH EXISTING GRADE AT BASE OF TREES



Construct Straw Bale Barrier Around Inlet.
 Fill & compact temporary V-ditch & grade easement to plan elevations per section A-A (see detail, this sheet).

Construct Straw Bale Barrier Around Inlet.

Install Back of Curb Protection.

NOTE: 6' WIDE BACK OF CURB PROTECTION TO BE USED ON THIS PROJECT

1333.0 = Flow In (6" Orifices)
 1335.0 = Inlet Top
 1337.7 = Flow Out

	Turkey Creek 3rd Addition - Phase II	
	EROSION CONTROL PLAN	
Street/SWS Improvements		
Baughman Company, P.A. 315 Ellis St. Wichita, KS 67211 P 316342-7771 F 316262-049		
ENGINEERING SURVEYING PLANNING LANDSCAPE ARCHITECTURE		
PROJECT NUMBER 472-84487	DESIGN JAK	DRAWN JAK
REVISIONS:	APPROVED	DATE 7/26/11
	SCALE Noted	SHEET 25 OF 42