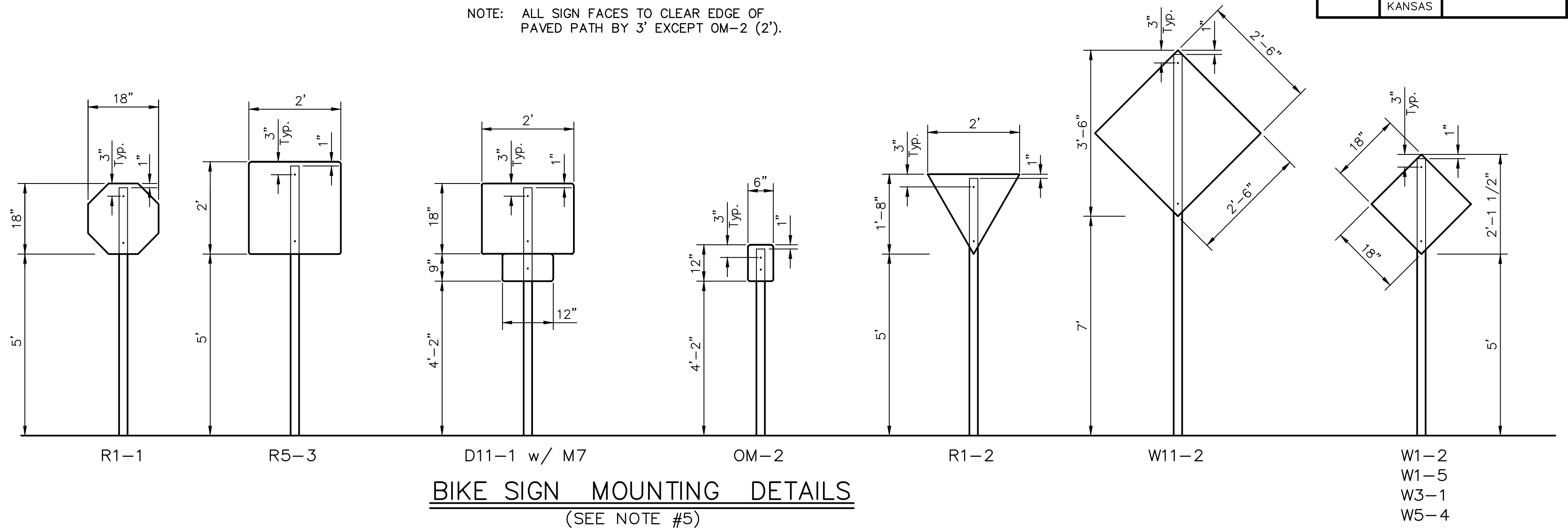
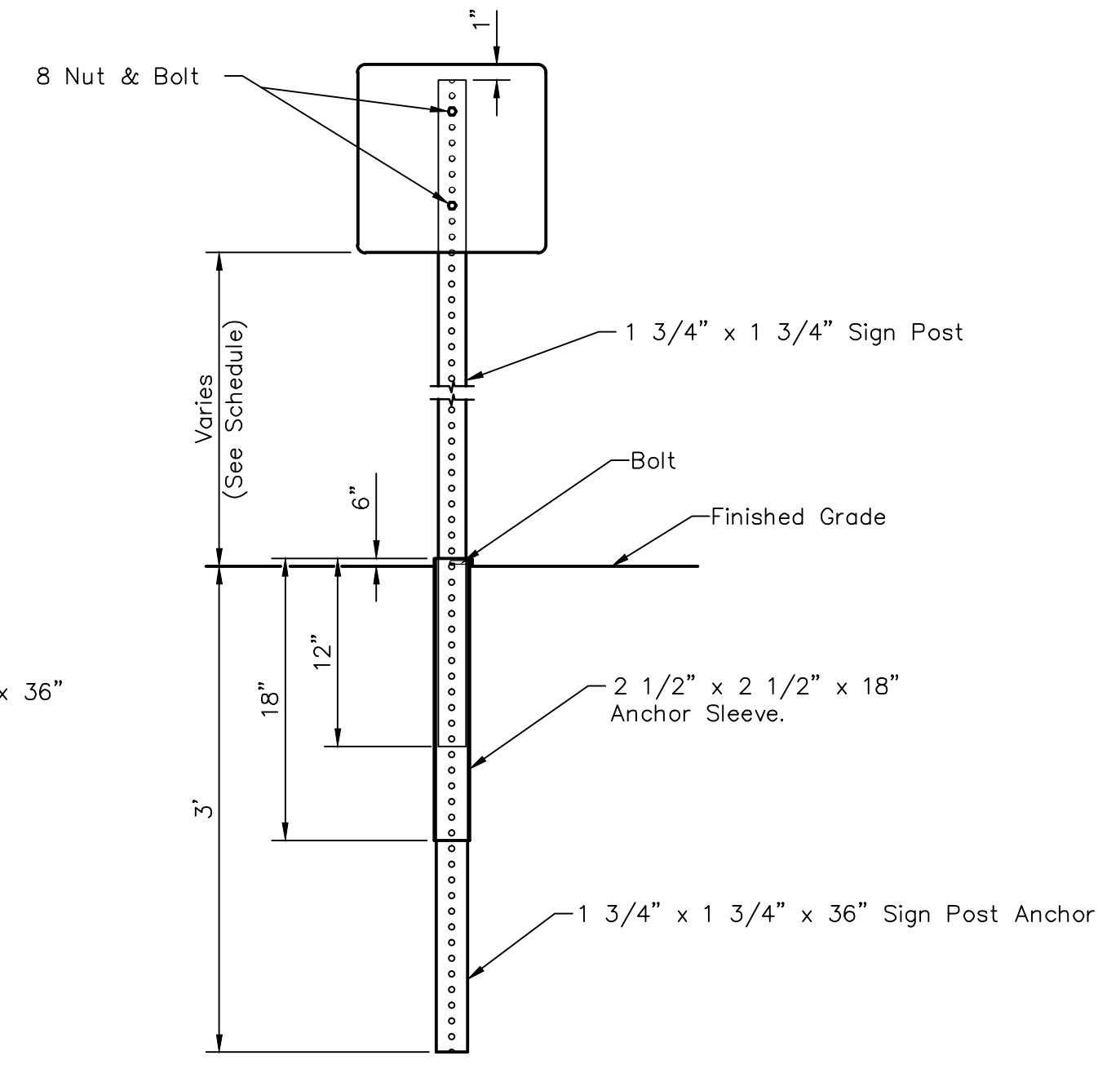
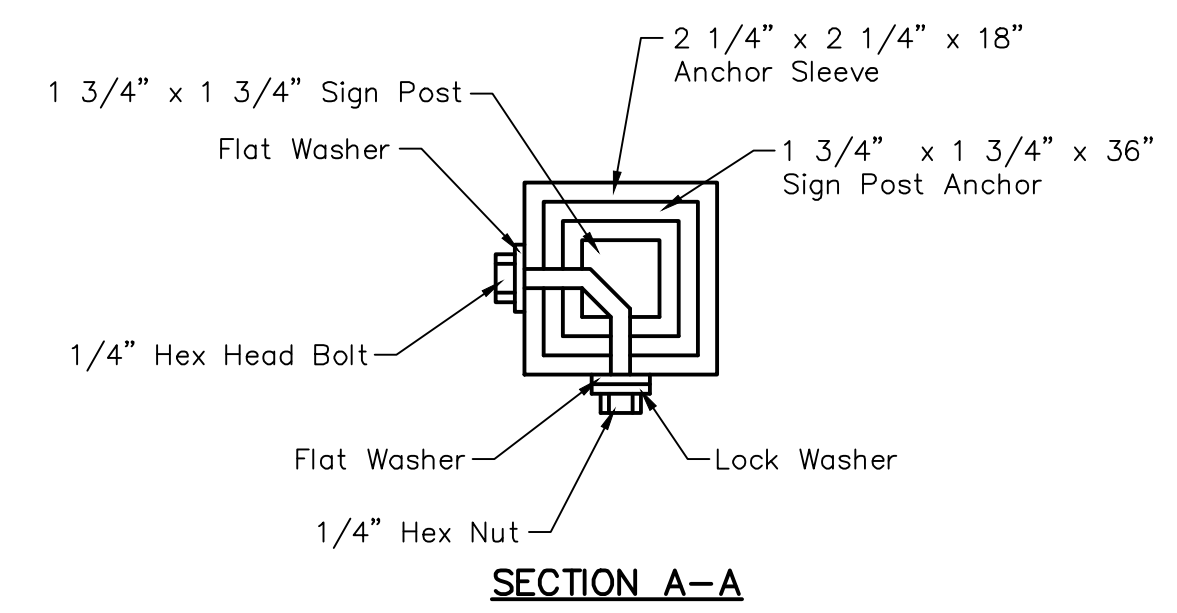


BICYCLE TRAFFIC CONTROL SIGNS & SIGN POSTS													
STATION	LOCATION FROM BL.	SIGN POST LENGTH											
		W11-1	W16-7	M7-5	D11-1	W5-4	R7-9A	R9-7 BIKE RT.	R9-7 BIKE LT.	OM-2	R9-5	BREAKAWAY LENGTH 1 3/4" X 1 3/4" X VARIES	"U" CHANNEL
3+23	RT.			1	1								9'-6"
3+48	LT.			1	1								9'-6"
9+58	LT.			1	1								9'-6"
9+65	LT.			1	1								9'-6"
10+54	RT.			1	1								9'-6"
24+01	RT.			2	2								9'-6"
TOTAL		-	-	7	7	-	-	-	-	-	-	-	

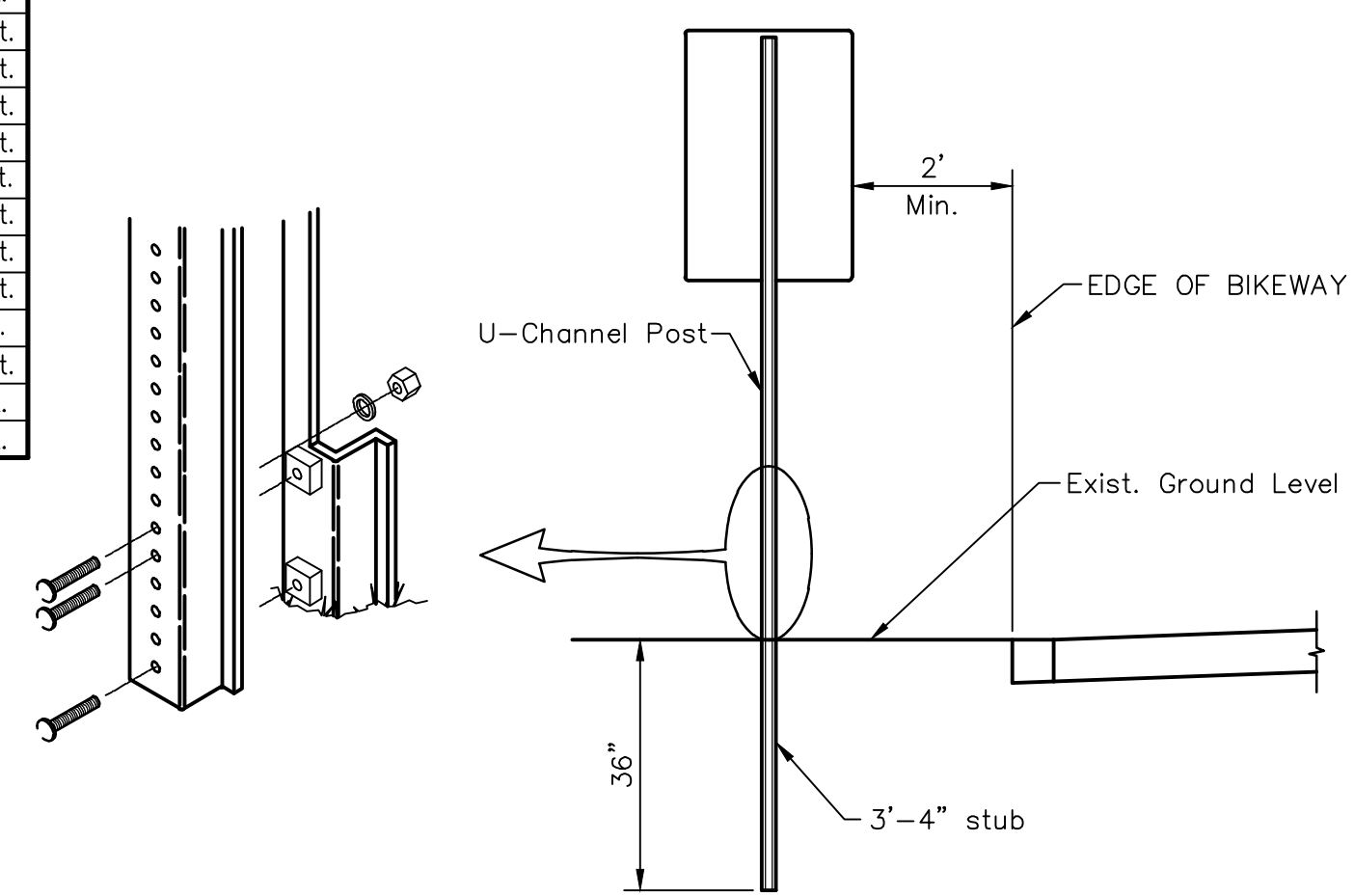
FHWA REGION NO.	STATE	PROJECT NUMBER	FISCAL YEAR	SHEET NUMBER	TOTAL SHEETS
	KANSAS			10	22



- PAVEMENT INSTALLATION SEQUENCE**
- SIGN POST ANCHOR DRIVEN INTO SUBGRADE PRIOR TO THE PLACEMENT OF THE PAVEMENT.
 - ANCHOR SLEEVE DRIVEN INTO SUBGRADE OVER THE SIGN POST ANCHOR PRIOR TO THE PLACEMENT OF THE PAVEMENT
 - INSERT SIGN POST INTO THE SIGN POST ANCHOR AND BOLT IN PLACE.
- GROUND INSTALLATION SEQUENCE**
- SIGN POST ANCHOR DRIVEN INTO GROUND
 - ANCHOR SLEEVE DRIVEN INTO THE GROUND OVER THE SIGN POST ANCHOR.
 - INSERT SIGN POST INTO THE SIGN POST ANCHOR AND BOLT IN PLACE.



SIGN DESCRIPTION				
CLASS.	TYPE	PROCESS	SIZE	AREA
W5-4	BIKEWAY NARROWS	DIR. SCREEN	18" x 18"	2.25 Sq. Ft.
OM-2	TYPE 2 YELLOW OBJECT MARKER	DIR. SCREEN	6" x 12"	.50 Sq. Ft.
W1-2R	CURVE	DIR. SCREEN	18" x 18"	2.25 Sq. Ft.
W1-2L	CURVE	DIR. SCREEN	18" x 18"	2.25 Sq. Ft.
W3-1	STOP AHEAD	DIR. SCREEN	18" x 18"	2.25 Sq. Ft.
W1-5L	CURVE	DIR. SCREEN	18" x 18"	2.25 Sq. Ft.
W1-5R	CURVE	DIR. SCREEN	18" x 18"	2.25 Sq. Ft.
R5-3	NO MOTOR VEHICLES	DIR. SCREEN	24" x 24"	4.0 Sq. Ft.
R1-1	STOP	REV. SCREEN	18" x 18"	2.25 Sq. Ft.
D11-1	BIKE ROUTE	REV. SCREEN	24" x 18"	3.0 Sq. Ft.
M7-1R	ARROW	REV. SCREEN	12" x 9"	0.75 Sq. Ft.
M7-1L	ARROW	REV. SCREEN	12" x 9"	0.75 Sq. Ft.
M7-5	ARROW	REV. SCREEN	12" x 9"	0.75 Sq. Ft.
M7-4	ARROW	REV. SCREEN	12" x 9"	0.75 Sq. Ft.
R1-2	YIELD	DIR. SCREEN	24" x 24" x 24"	1.73 Sq. Ft.
W1-1L	CURVE	DIR. SCREEN	18" x 18"	2.25 Sq. Ft.
W11-2	PED. CROSSING	DIR. SCREEN	30" x 30"	6.25 Sq. Ft.
W11A-2	PED. CROSSING	DIR. SCREEN	30" x 30"	6.25 Sq. Ft.
R7-9a	NO PARKING - BIKE LANE	DIR. SCREEN	12" x 18"	1.5 Sq. Ft.
W16-1	SHARE THE ROADWAY	DIR. SCREEN	30" x 30"	6.25 Sq. Ft.
R3-17	RIGHT LANE BIKE ONLY	DIR. SCREEN	24" x 30"	5.0 Sq. Ft.
R8-3a	NO PARKING	DIR. SCREEN	24" x 24"	4.0 Sq. Ft.



- NOTES:**
- IN ALL INSTALLATIONS THE FIRST HOLE ABOVE THE FINISHED GRADE LEVEL IN ALL THREE UNITS MUST BE IN LINE FOR INSERTION OF THE BOLT.
 - ALL BOLTS AND NUTS FOR FASTENING THE SIGNS AND SIGN POST ASSEMBLY SHALL COMPLY WITH SECTION 1614 AND ALL WASHERS SHALL COMPLY WITH SECTION 1614 OF THE STANDARD SPECIFICATIONS FOR STATE ROAD AND BRIDGE CONSTRUCTION (1980 EDITION) AND SHALL BE SUBSIDIARY ITEM.
 - ALL LETTER, NUMBER & SYMBOL SIZES, SPACING & COLORS AND SIGN COLORS SHALL CONFORM TO THE CURRENT "MANUAL ON UNIFORM TRAFFIC CONTROL DEVICES."
 - ALL SIGN MATERIALS TO BE 0.080" ALUMINUM.
 - VEHICLE TRAFFIC CONTROL SIGN DIMENSIONS AND MOUNTING HEIGHT SHALL CONFORM TO THE CURRENT "MUTCD".

THE CITY OF WICHITA

CITY ENGINEER'S OFFICE
CITY HALL - SEVENTH FLOOR
456 NORTH MAIN STREET
WICHITA, KANSAS 67202
(316) 268-4501
(316) 268-4114 FAX

BIKE PATH SIGNING DETAILS AND QUANTITIES

JAMES R. ARMOUR P.E. - ACTING CITY ENGINEER

PROJECT NUMBER: _____ INDEX CODE: _____

DATE: MAY 11 SHEET 10 OF 22