

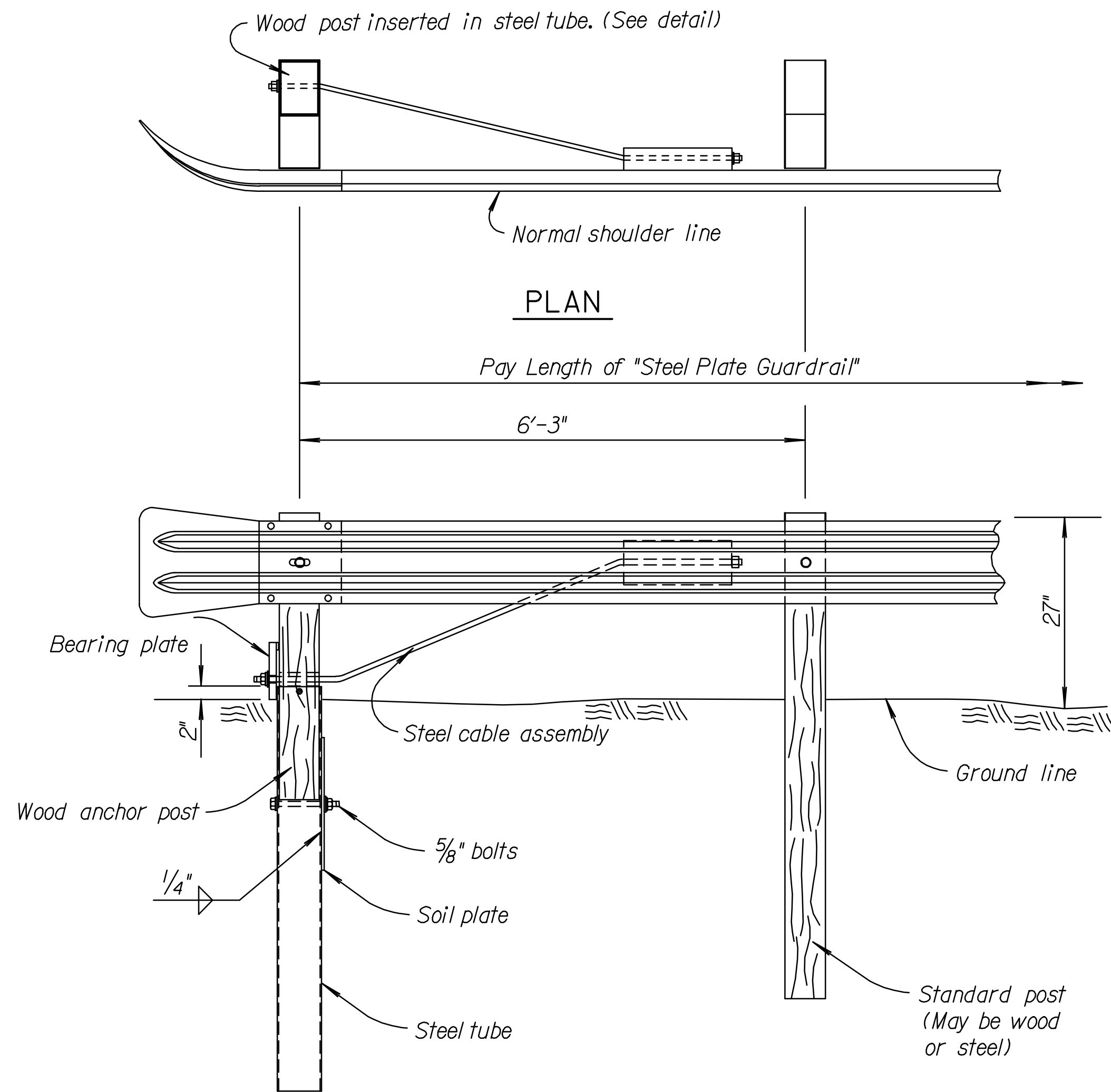
STATE	PROJECT NO.	YEAR	SHEET NO.	TOTAL SHEETS
KANSAS	472-84923	2011	6	42

Note to Designer: Guardrail End Terminal, Type II may generally be used on the traffic departing end of barriers where end on impacts are not a consideration and at the end of entrance return.

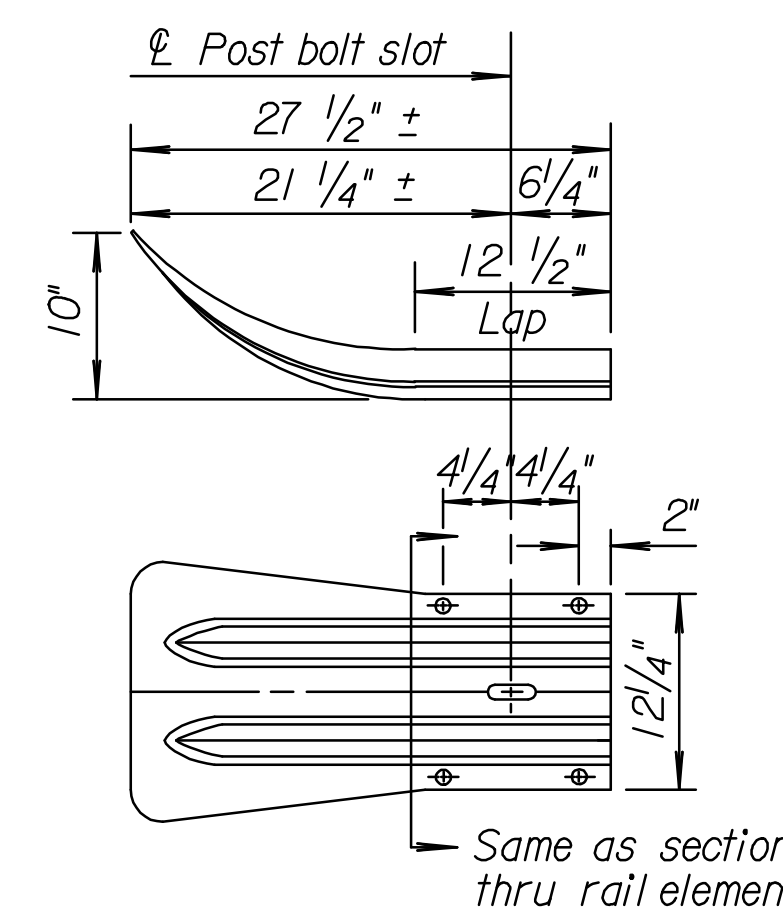
Drawn By: cp
Plotted: 22-JUL-2011 10:45
File: I:\2010\10313\Standards\rd618.dgn

GENERAL NOTES

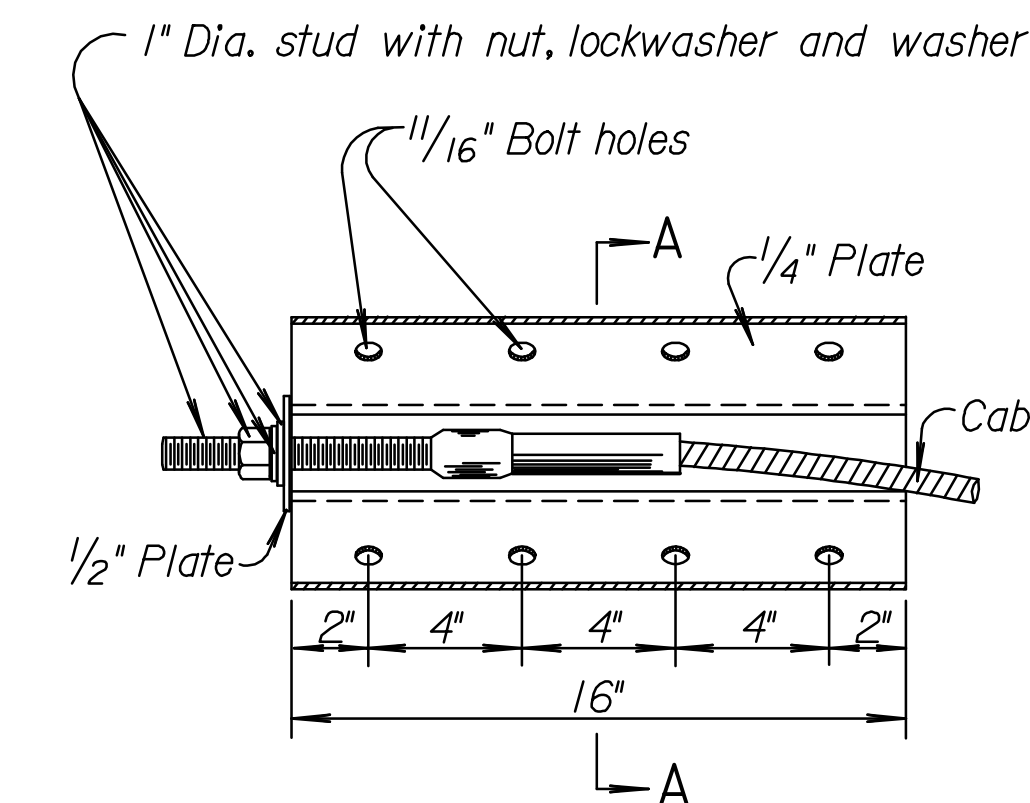
See other guardrail standard drawings for details of guardrail not shown.
 All steel parts shall be galvanized after fabrication.
 All guardrail splices, including special end shoes, shall be lapped in the direction of Traffic. Where traffic is temporarily carried in the direction opposite of the final configuration, the rail splices shall be lapped in the direction of the permanent traffic.
 Terminal end posts shall consist of a wood post inserted in a steel tube as detailed on this sheet. Wood or steel may be used, at the Contractor's option, for the remainder of the posts except where specific material is required for features shown on other standard drawings, such as end terminals and intersecting roadways.
 The Type II end terminal shall be included in the pay length of "Steel Plate Guardrail".
 All material and labor required for the installation of Barrier Terminal Type II shall be considered subsidiary to the bid item "Steel Plate Guardrail".
 The soil plate and steel tube shall be set in place prior to the installation of the wood anchor assembly post.



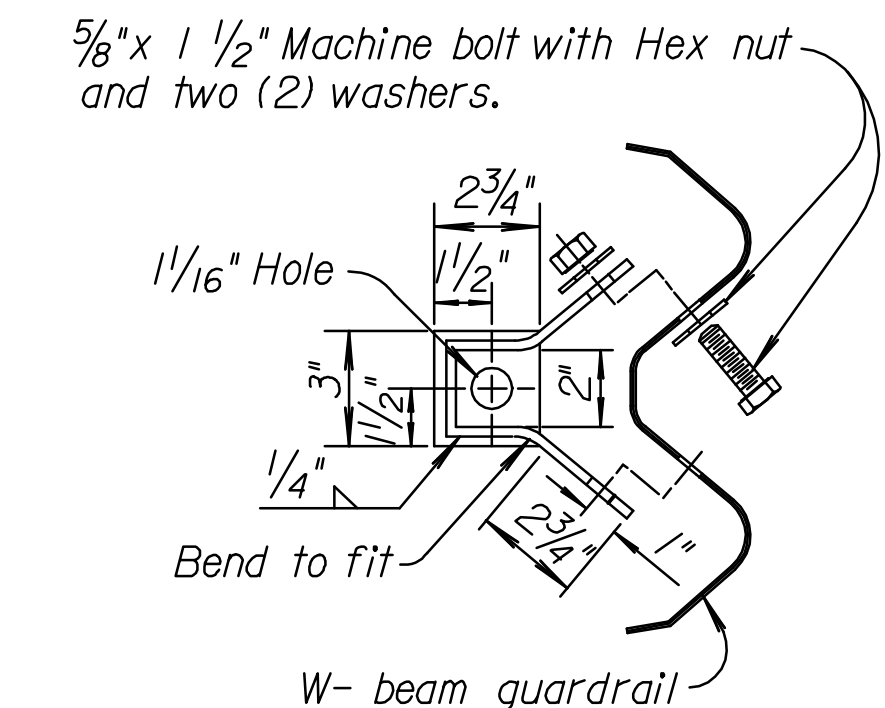
DETAIL OF ANCHOR ASSEMBLY



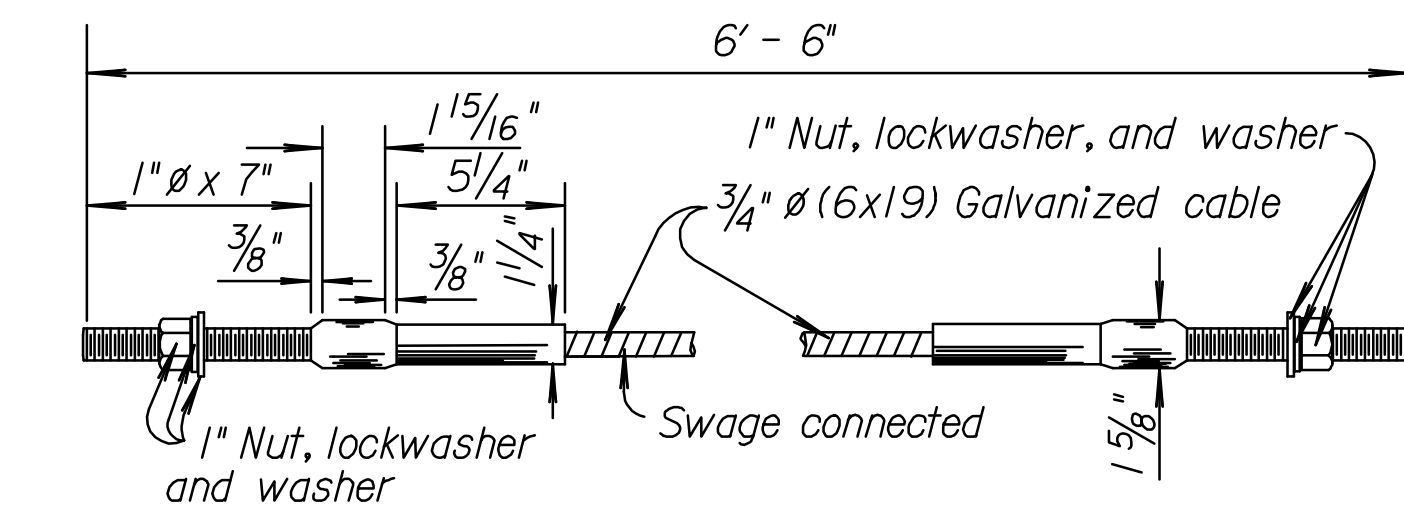
STANDARD END SECTION
(1 each)
(Subsidiary to Steel Plate Guardrail)



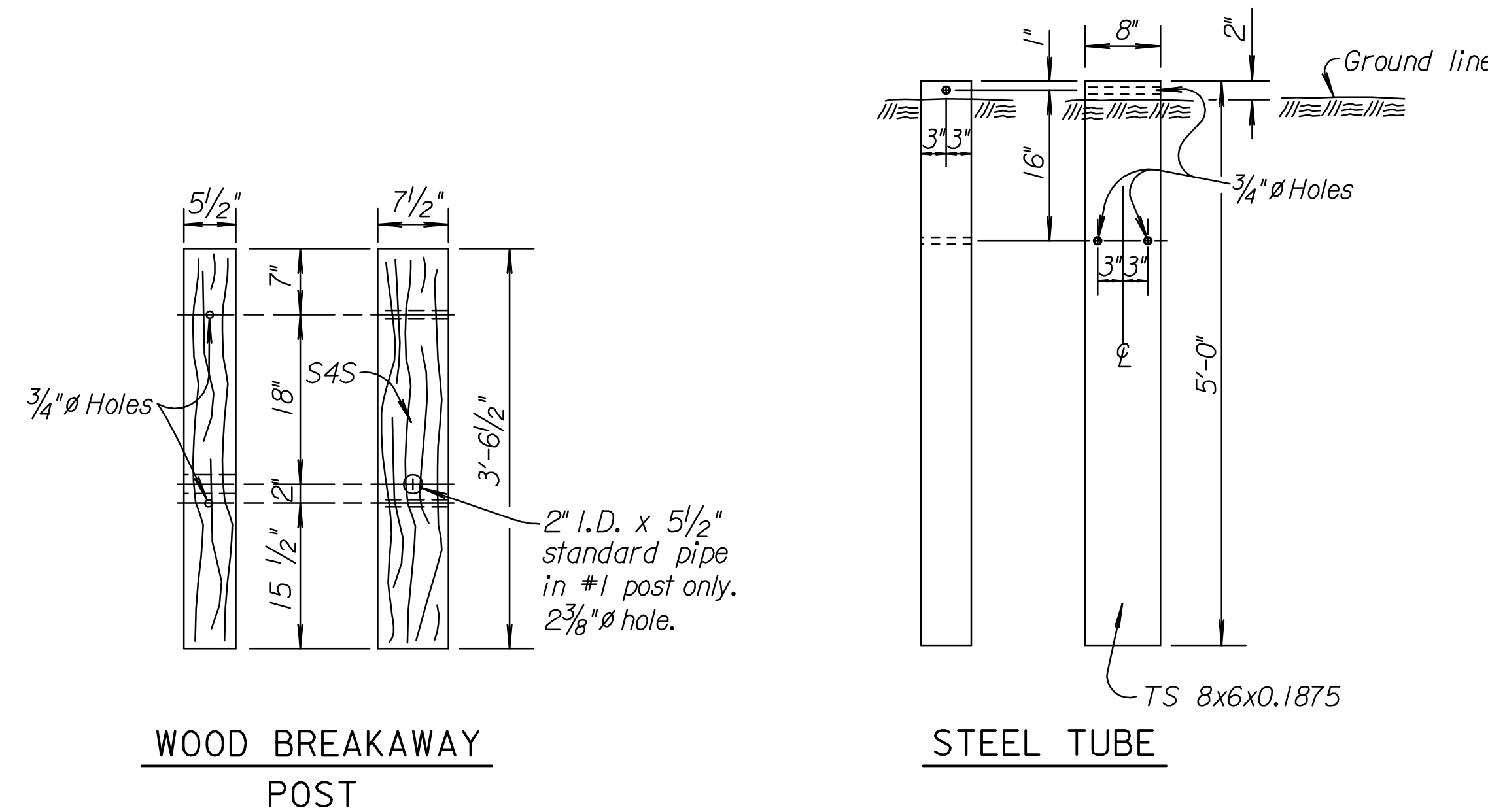
ANCHOR PLATE



MODIFIED SECTION A-A

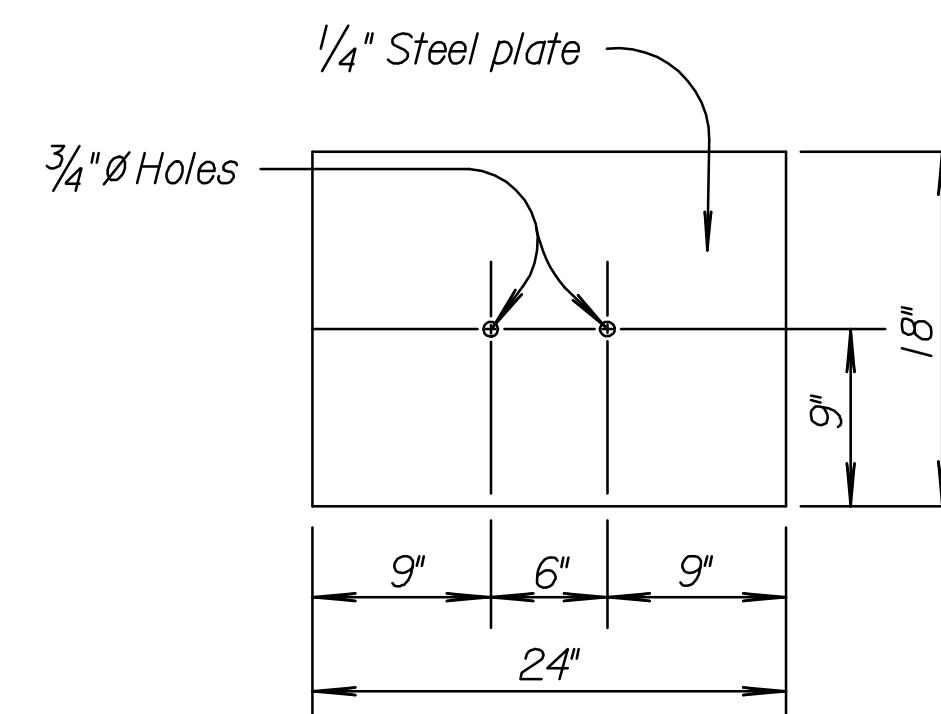


CABLE ASSEMBLY (1 each)
(40,000 lbs. min. breaking strength)
Tighten cable to taut tension.

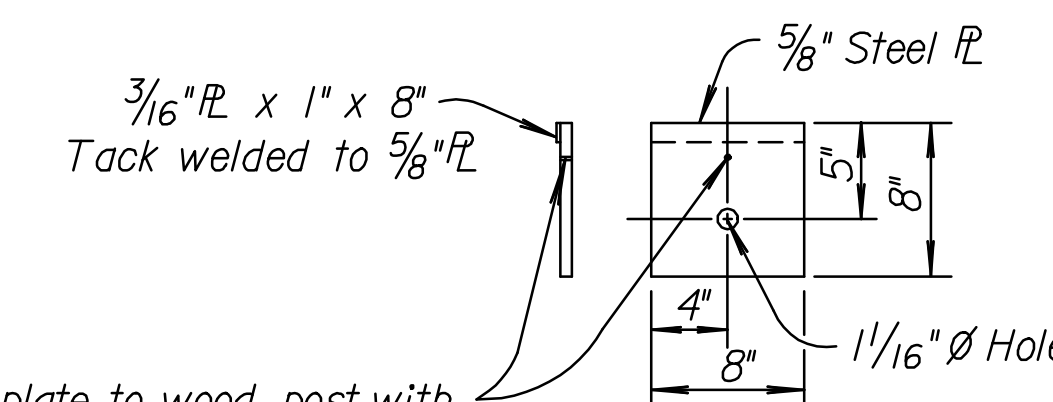


WOOD BREAKAWAY POST

STEEL TUBE



SOIL PLATE



BEARING PLATE

Fasten plate to wood post with #12x 2" zinc plated screw similar to detail shown on steel breakaway post.

NO.	DATE	REVISIONS	BY	APP'D
5	7-20-04	Changed Guard fence to Guardrail	S.W.K.	J.O.B.
4	5-18-00	Added note for temporary traffic	R.J.S.	J.O.B.
3	11-26-97	Added pay length	R.J.S.	J.O.B.

KANSAS DEPARTMENT OF TRANSPORTATION

GUARDRAIL END TERMINAL TYPE II

RD618

DESIGNED	11-02-04	APP'D.	James O. Brewer
DESIGN CK.	DETAIL CK.	QUANTITIES	TRACED Bowser
		QUAN. CK.	TRACE CK. Seitz