

STATE	PROJECT NO.	YEAR	SHEET NO.	TOTAL SHEETS
KANSAS	472-84923	2011	8	42

**GENERAL NOTES**

Breakaway posts are required with the FLEAT, bearing plates and all other steel parts shall be galvanized after fabrication.

The soil tubes shall not protrude more than 4" above ground (measured along a 5'-0" cord). Site grading may be necessary to meet this requirement.

The soil tubes may be driven with an approved driving head. Soil tubes should not be driven with the post in the tube. If the tubes are placed in drilled holes, the backfill material must be satisfactorily compacted to prevent settlement.

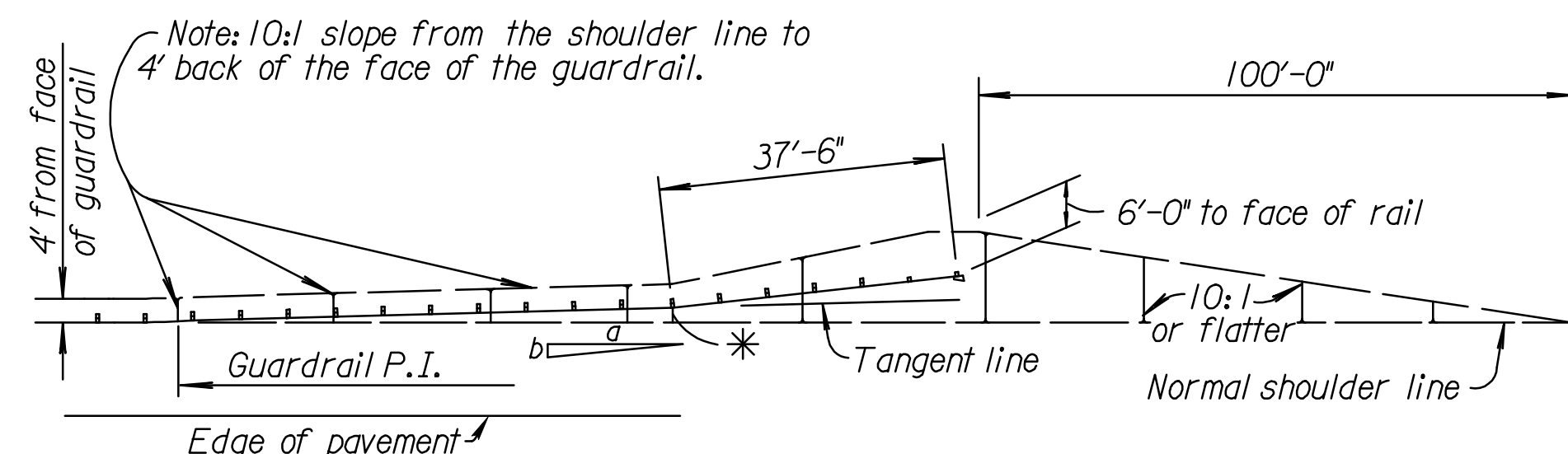
When rock is encountered during excavation, a 12" Dia. post hole, 20" deep may be used if approved by the engineer. Granular material will be placed in the bottom of the hole approx. 2 1/2" deep to provide drainage. The soil tubes will be field cut to length, placed in the hole and backfilled with adequately compacted material excavated from the hole.

The breakaway cable assembly must be taut. A locking device, (vice grips channel lock pliers) should be used to prevent the cable from twisting when tightening nuts.

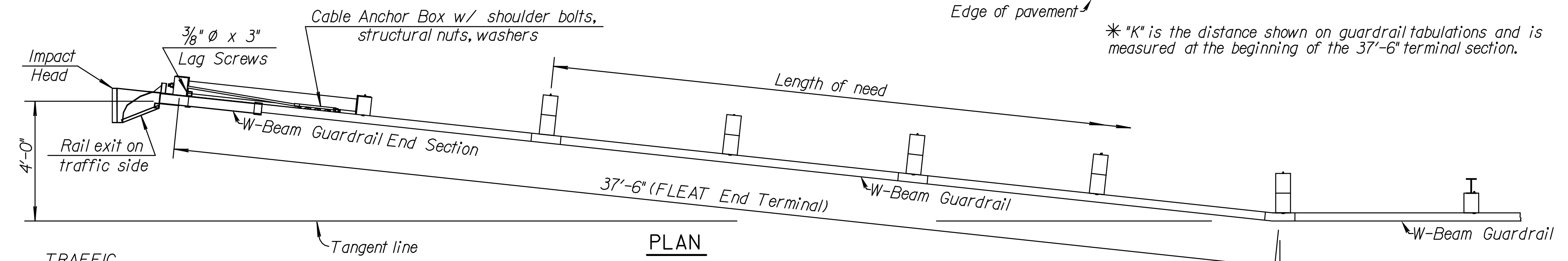
All work and materials required for installation of this terminal shall be paid under the bid item "Guardrail End Terminal (FLEAT)".

Standard splices, standard hardware connections (bolts, nuts, & washers) are used except where noted. See RD611 for additional details.

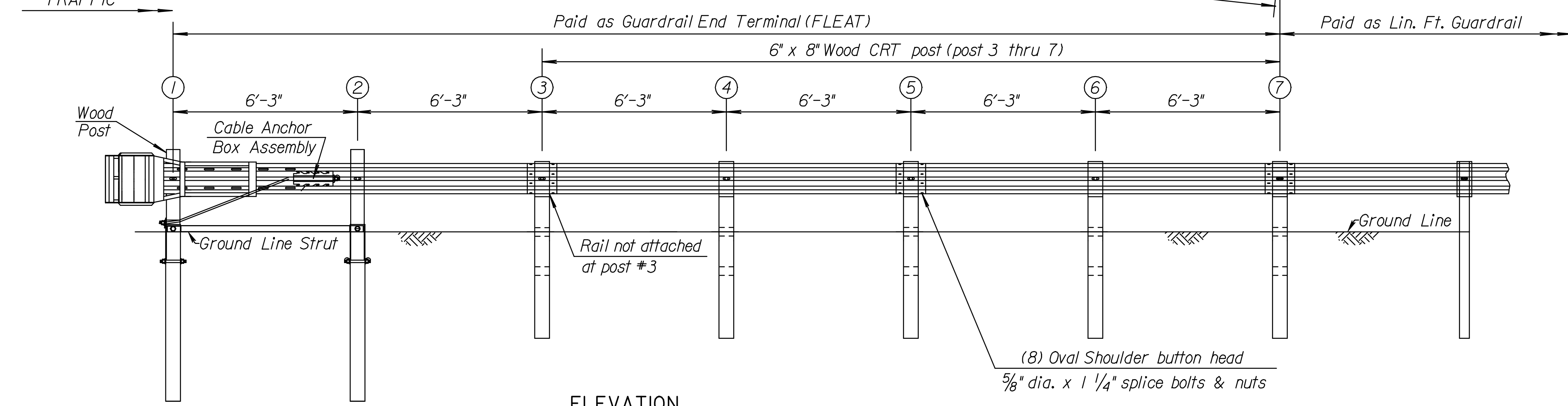
Retroreflective sheeting as shown in the detail shall be provided on all installations. The retroreflective sheeting should be installed on the face of the impact head prior to installation. The impact head should be thoroughly cleaned and dry prior to application.



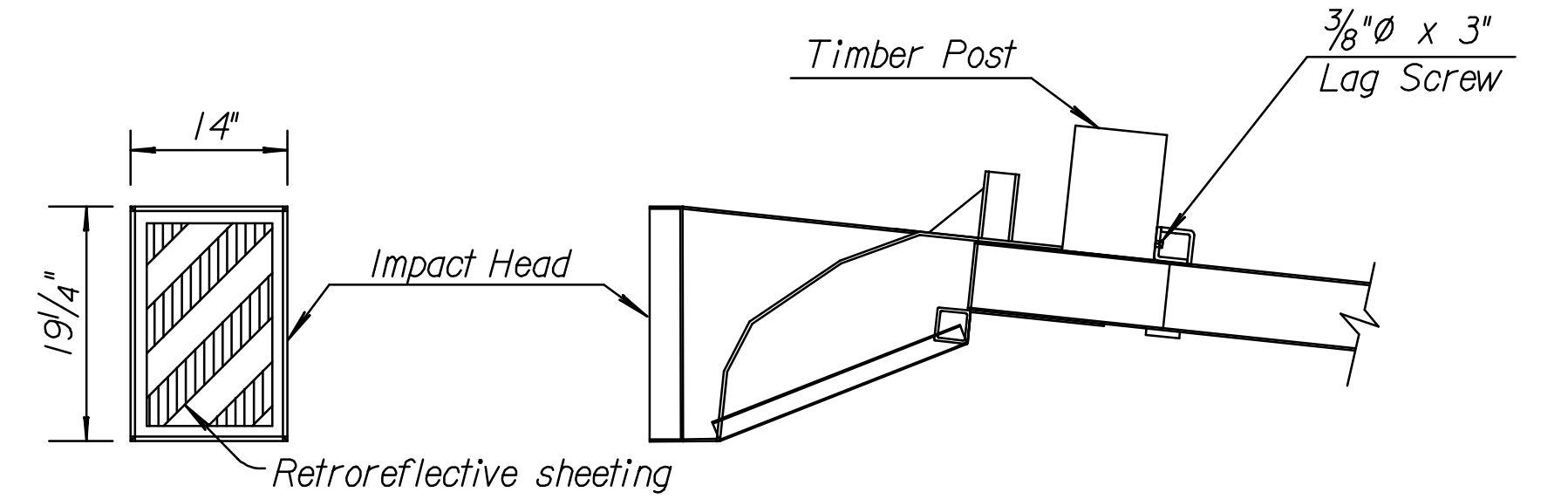
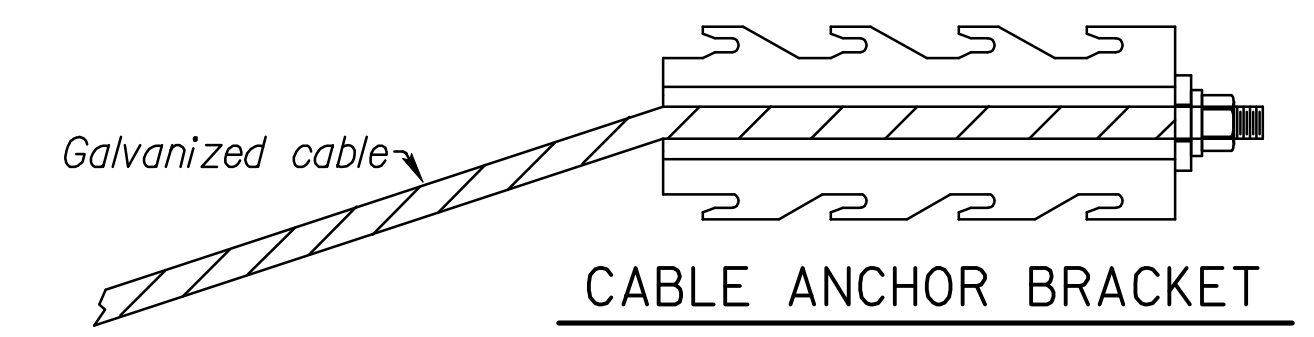
\* "K" is the distance shown on guardrail tabulations and is measured at the beginning of the 37'-6" terminal section.



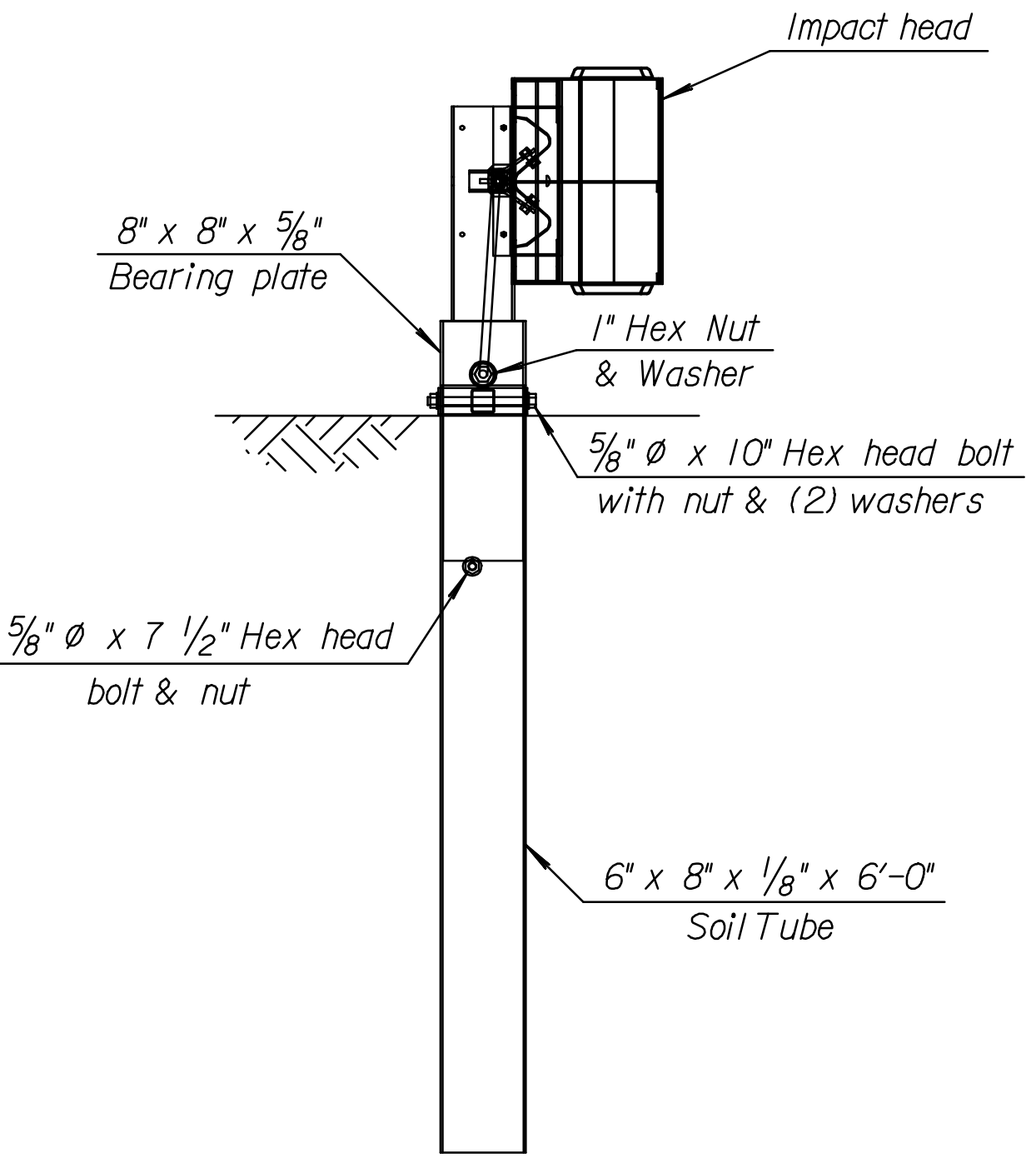
**PLAN**



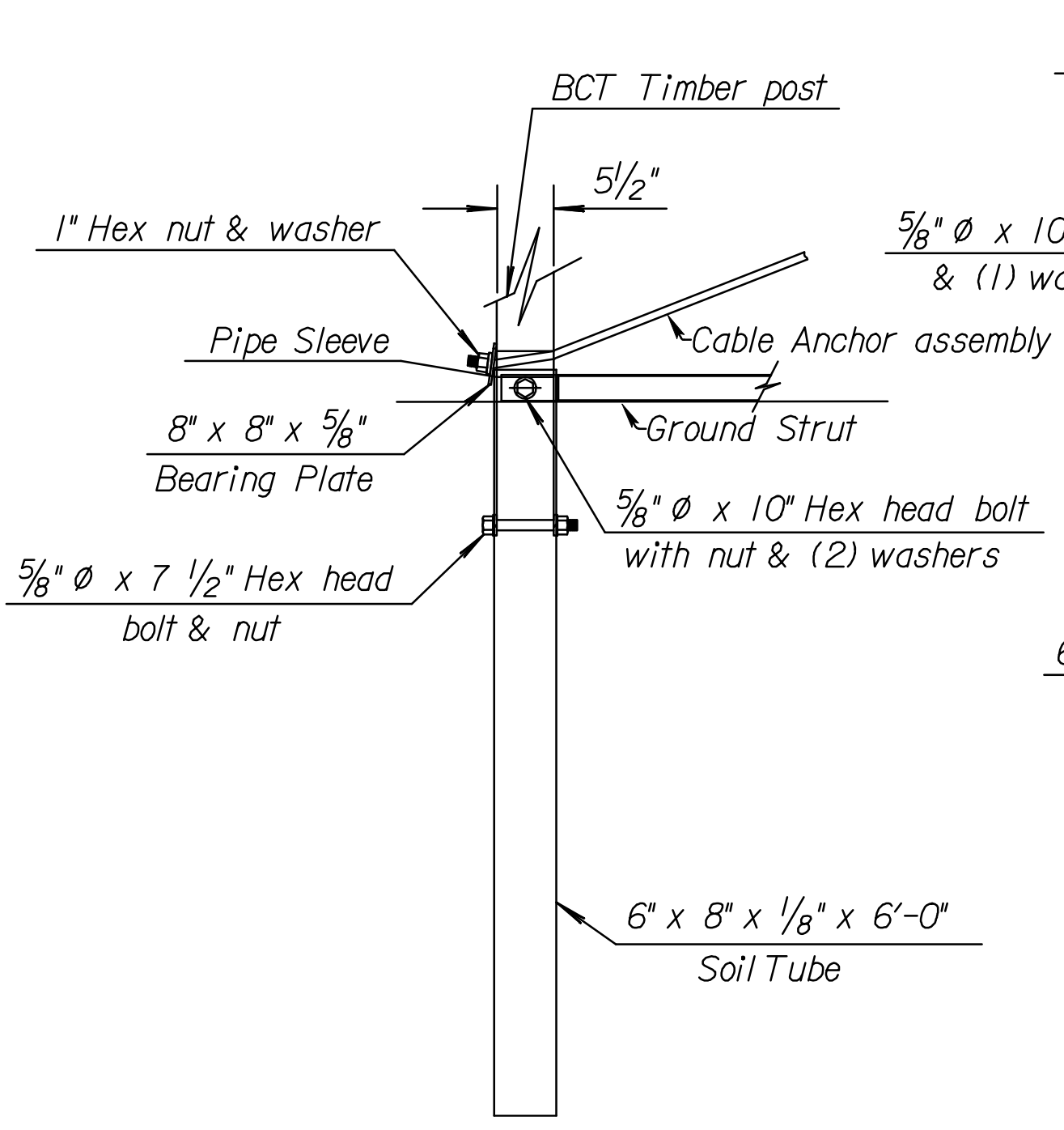
**ELEVATION**



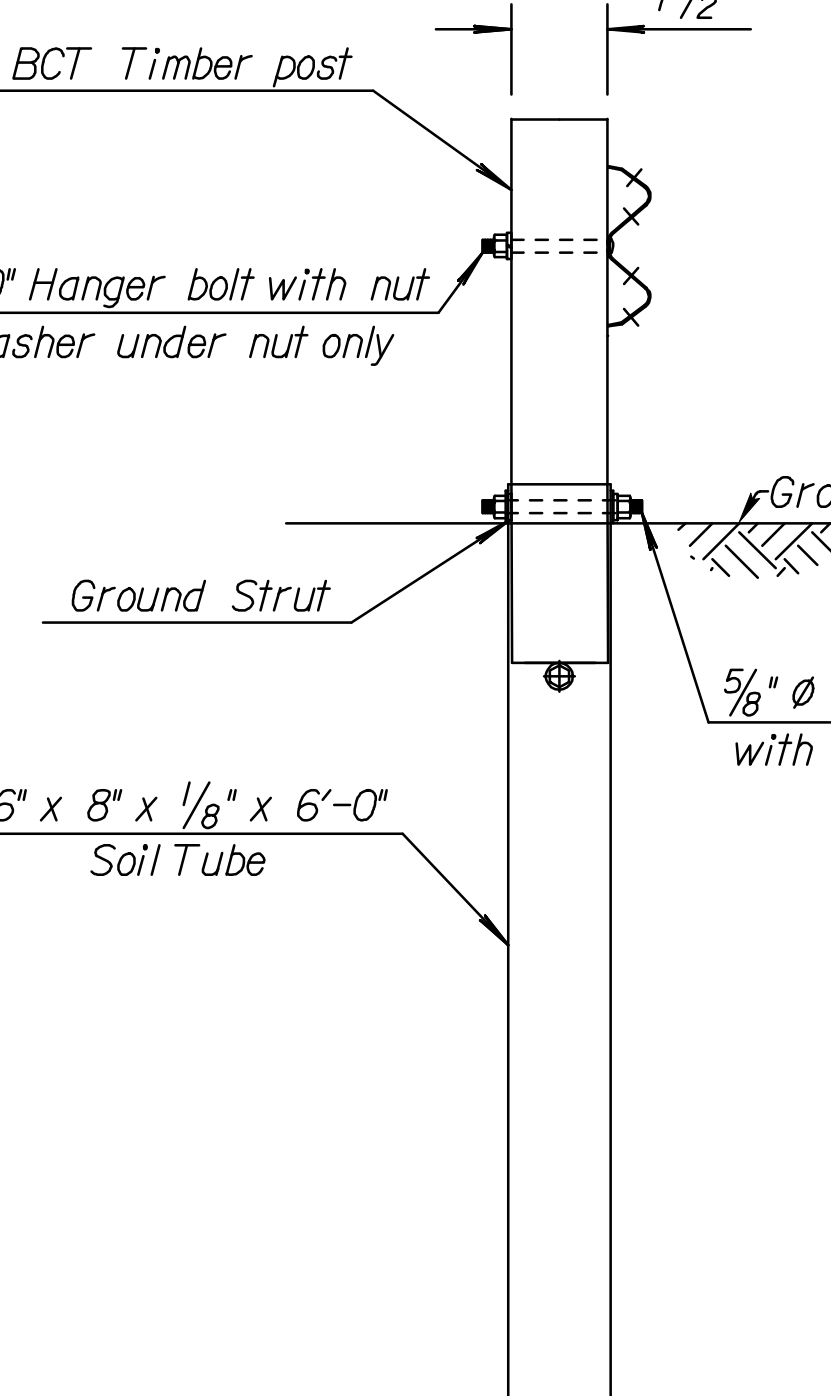
**IMPACT HEAD CONNECTING DETAIL**



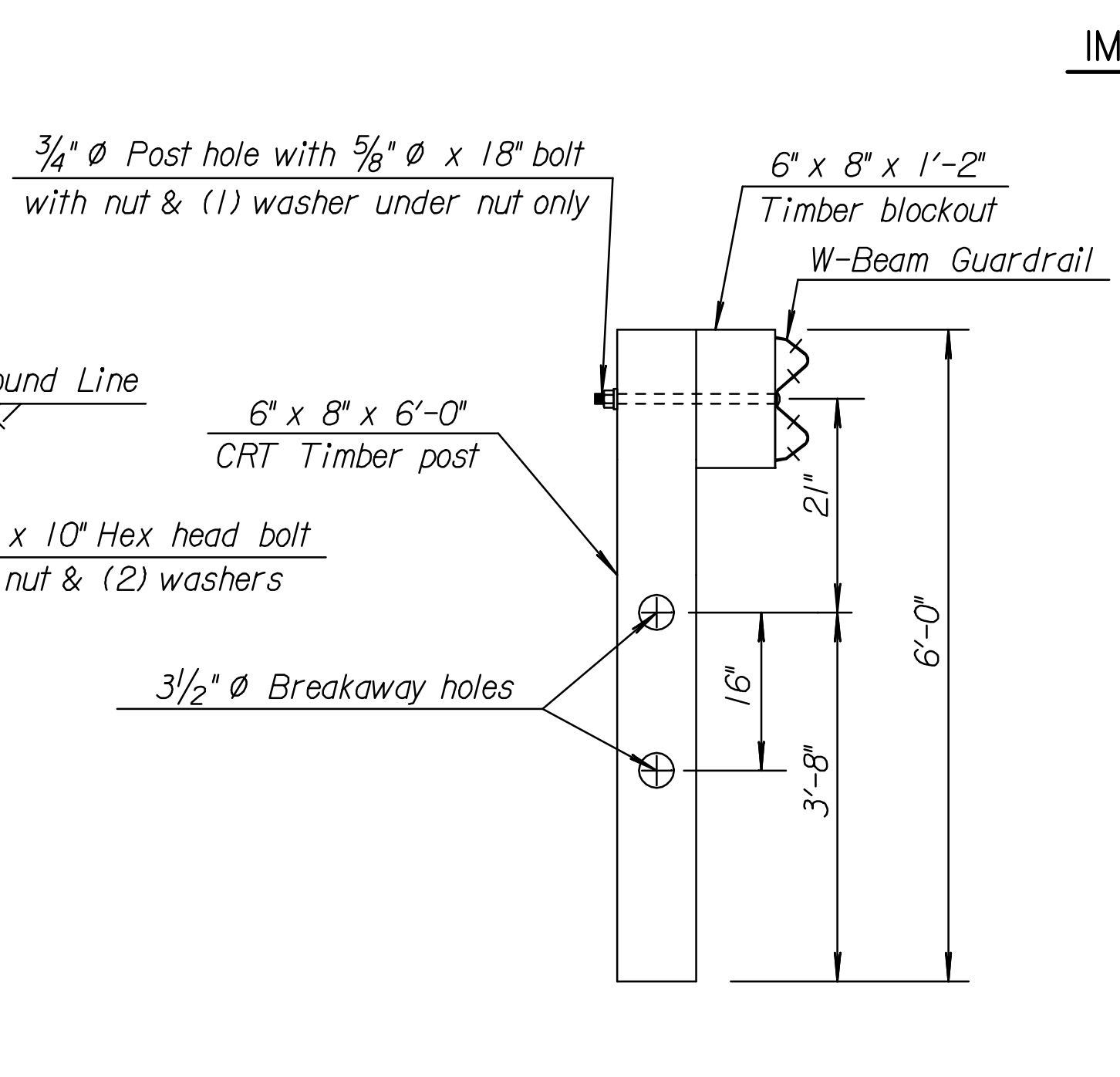
**FRONT VIEW OF POST #1**



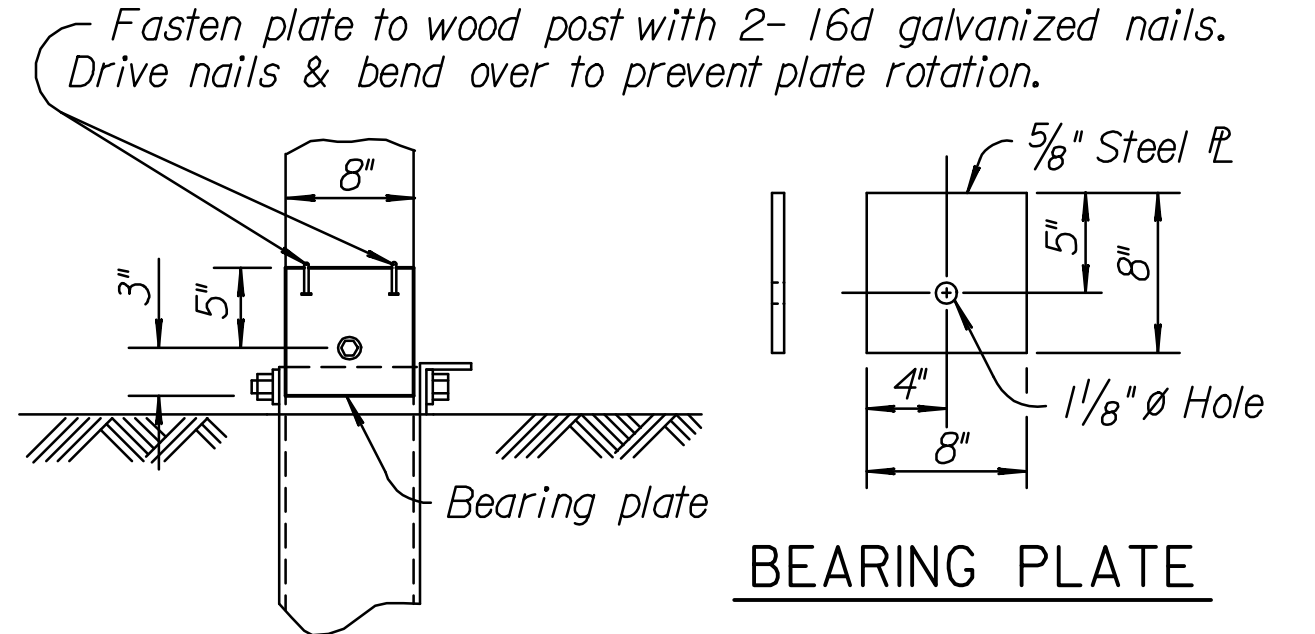
**PARTIAL VIEW OF POST #1**



**DETAIL OF POST #2**



**DETAIL OF POSTS (#3 through #7)**



**BEARING PLATE**

The bearing plate shall be oriented as shown with the hole located 5" from the top.

3				
2				
1				
NO.	DATE	REVISIONS	BY	APP'D

KANSAS DEPARTMENT OF TRANSPORTATION

**GUARDRAIL END TERMINAL FLEAT**

RD606B				
FHWA APPROVAL	11-02-04	APP'D. James O. Brewer		
DESIGNED	QUANTITIES	TRACED	Bowser	
DESIGN CK.	DETAIL CK.	QUAN. CK.	TRACE CK.	King

Drawn By: cp  
 Plotted: 22-JUL-2011 10:45  
 File: I:\2010\10313\Standards\rd606b.dgn