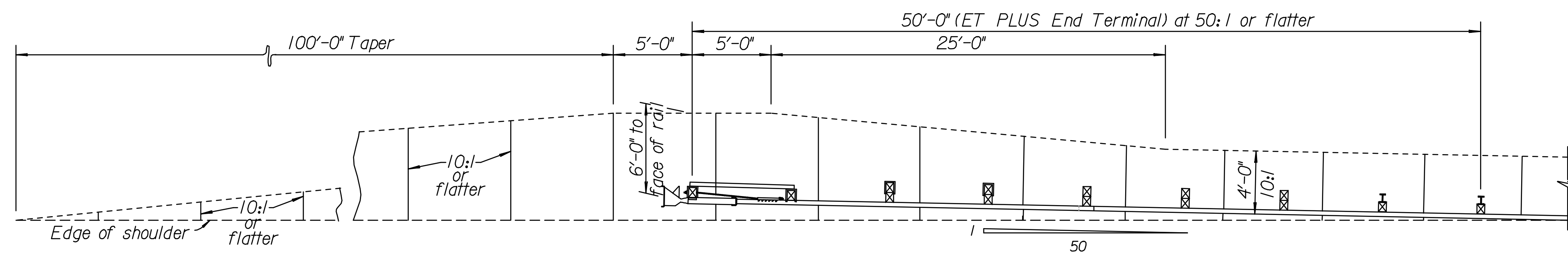
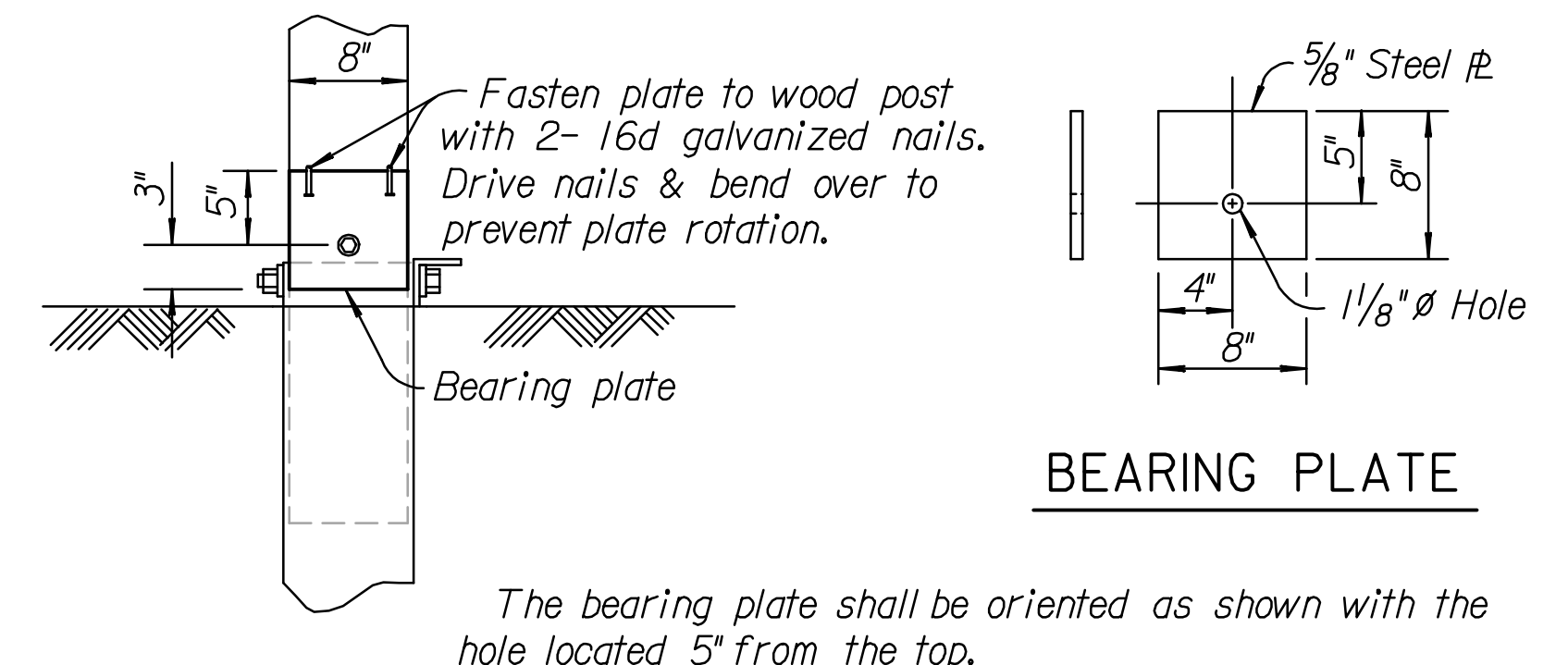
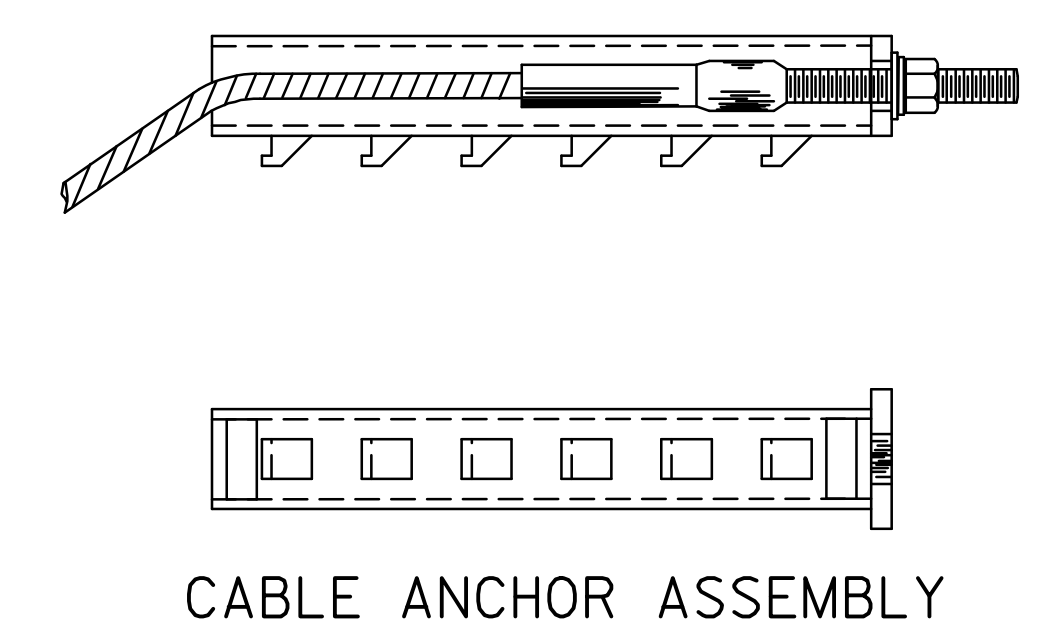
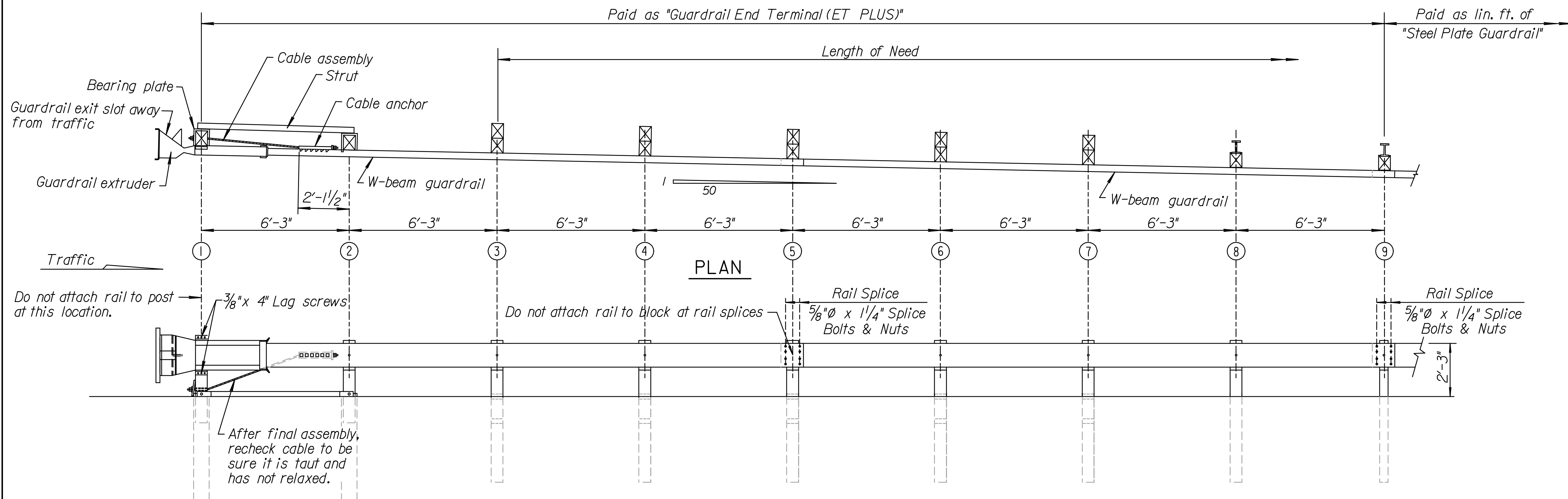


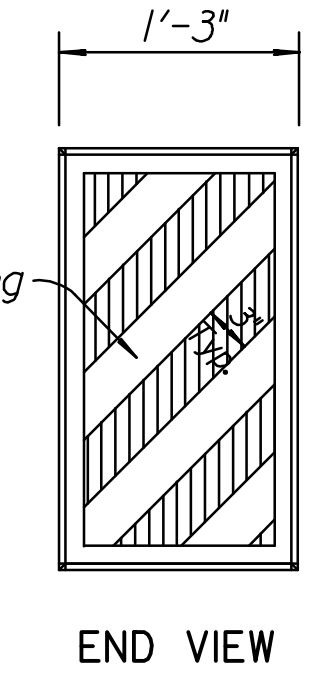
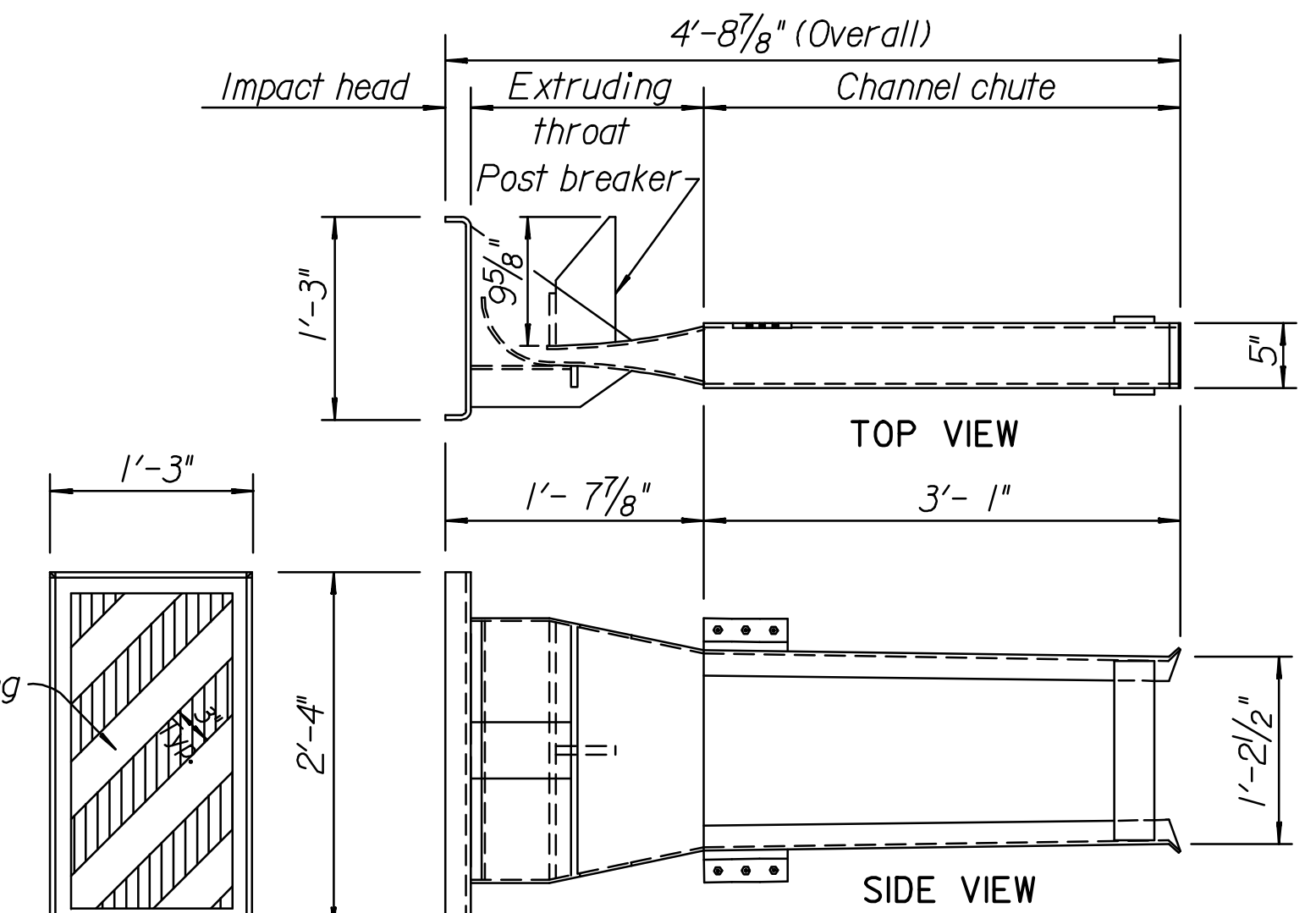
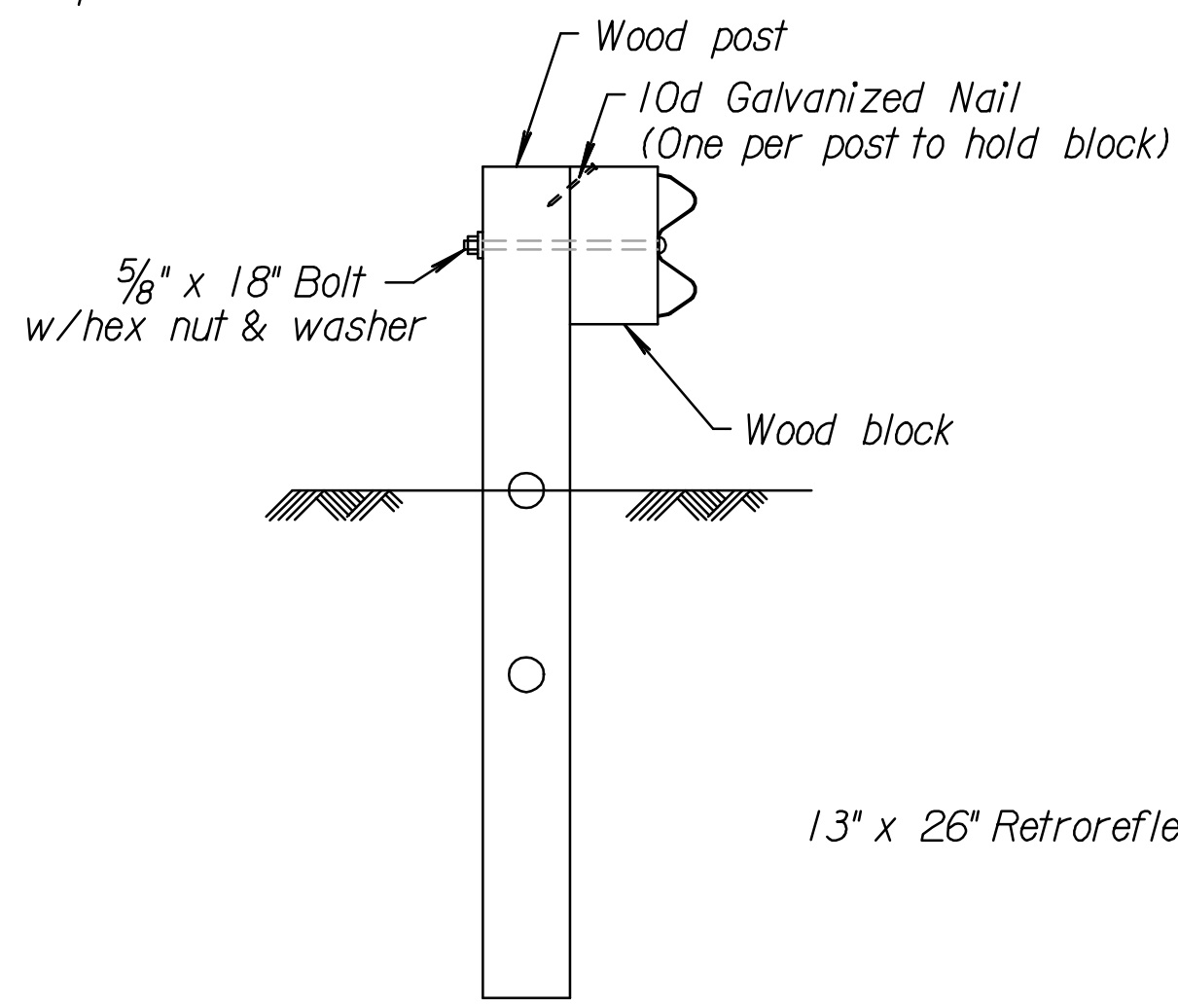
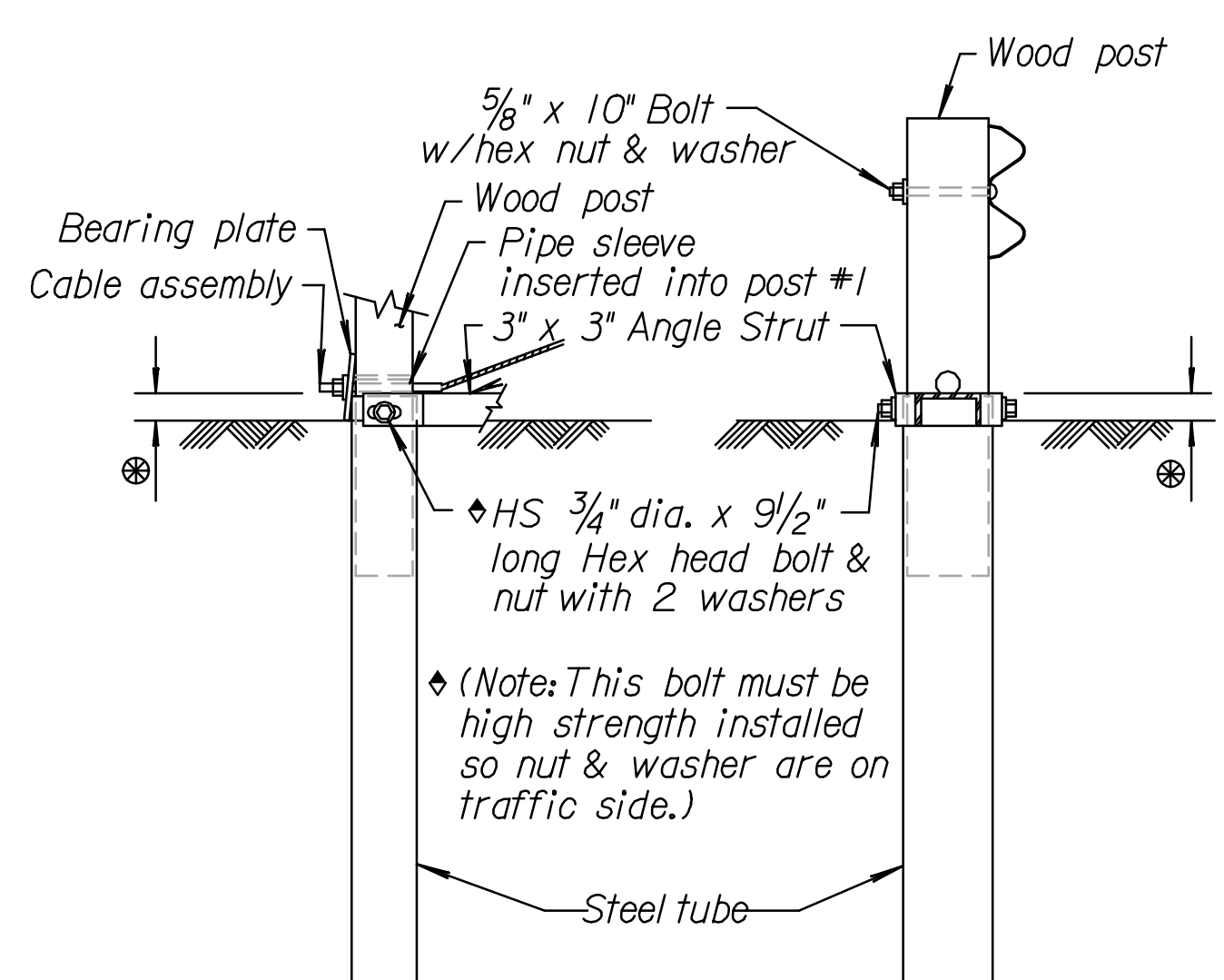
STATE	PROJECT NO.	YEAR	SHEET NO.	TOTAL SHEETS
KANSAS	472-84923	2011	9	42



GENERAL NOTE
 See RD611 & RD613 for details of guardrail not shown.
 Posts ① through ⑦ on the (ET PLUS) shall be wood as specified by the manufacturer regardless of post material used on remainder of the installation.
 All guardrail splices shall be lapped in the direction of Traffic. Where traffic is temporarily carried in the direction opposite of the final configuration, the rail splices shall be lapped in the direction of the permanent traffic.
 All work and materials required for installation of this terminal shall be paid under the bid item "Guardrail End Terminal (ET PLUS)".
 All steel parts shall be galvanized after fabrication.
 Retroreflective sheeting as shown in the detail shall be provided on all installations. The retroreflective sheeting should be installed on the face of the extruder prior to installation. Extruder should be thoroughly cleaned and dried prior to application.
 The steel tubes may be driven with an approved driving head. They shall not be driven with the wood post in the tube. If the steel tubes are placed in drilled holes, the backfill material must be satisfactorily compacted to prevent tube settlement.
 The breakaway cable assembly must be taut. A locking device, (vice grips or channel lock pliers) should be used to prevent the cable from twisting when tightening the nuts.



⊗ 4" maximum projection of the steel tube above the 10:1 or flatter surface slope.



NO.	DATE	REVISIONS	BY	APP'D
10	5-10-04	Rev. terminal from (LET to ET PLUS)	S.W.K.	J.O.B.
9	8-24-00	Added note Long Rail Element	R.J.S.	J.O.B.
8	5-19-00	Added note for temporary traffic	R.J.S.	J.O.B.

KANSAS DEPARTMENT OF TRANSPORTATION			
GUARDRAIL END TERMINAL (ET PLUS)			
RD606			
FHWA APPROVAL	11-02-04	APP'D. James O. Brewer	
DESIGNED	DETAILED	QUANTITIES	TRACED Bowser
DESIGN CK.	DETAIL CK.	QUAN. CK.	TRACE CK. King

Drawn By: cp
 Plotted: 22-JUL-2011 10:45
 File: I:\2010\10313\Standards\rd606.dgn