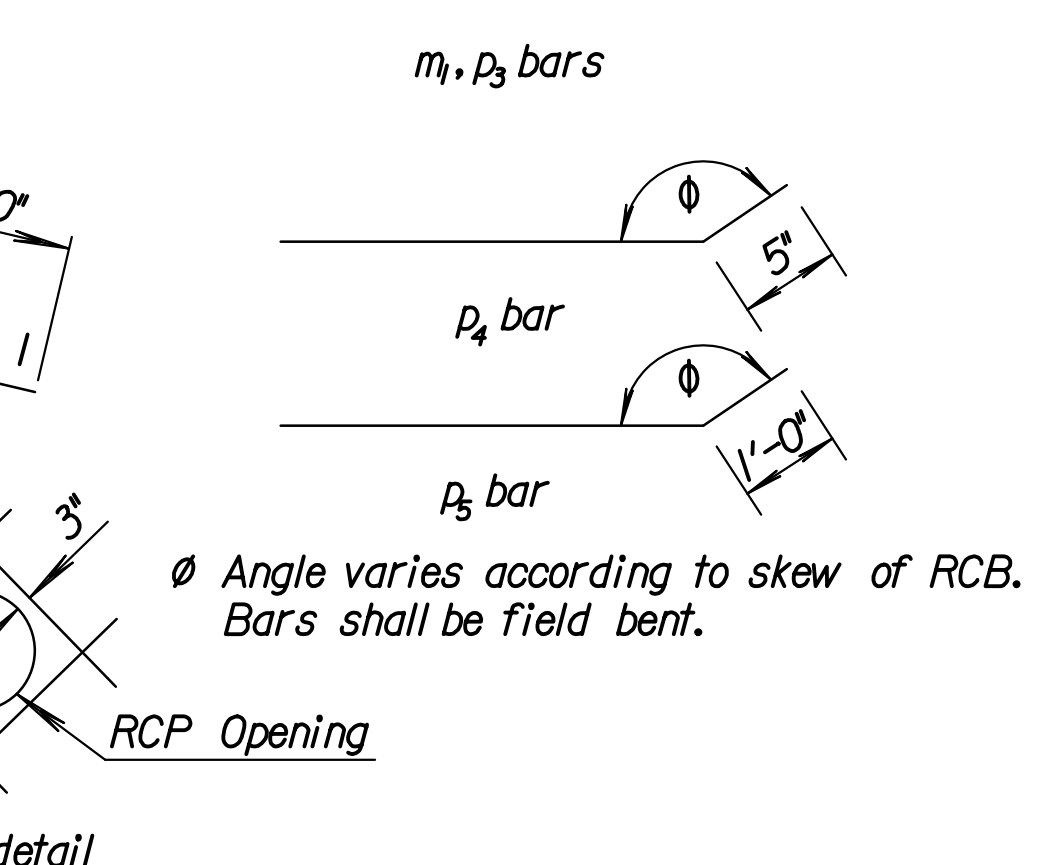
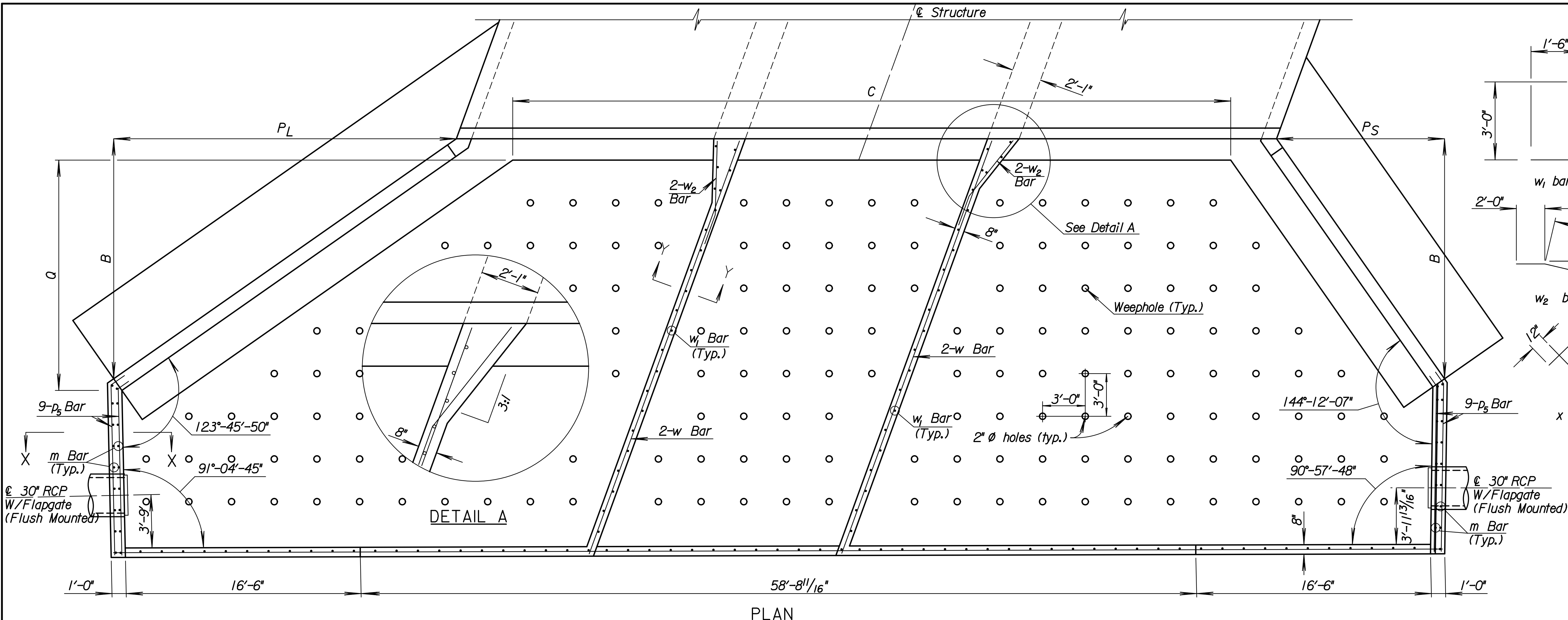


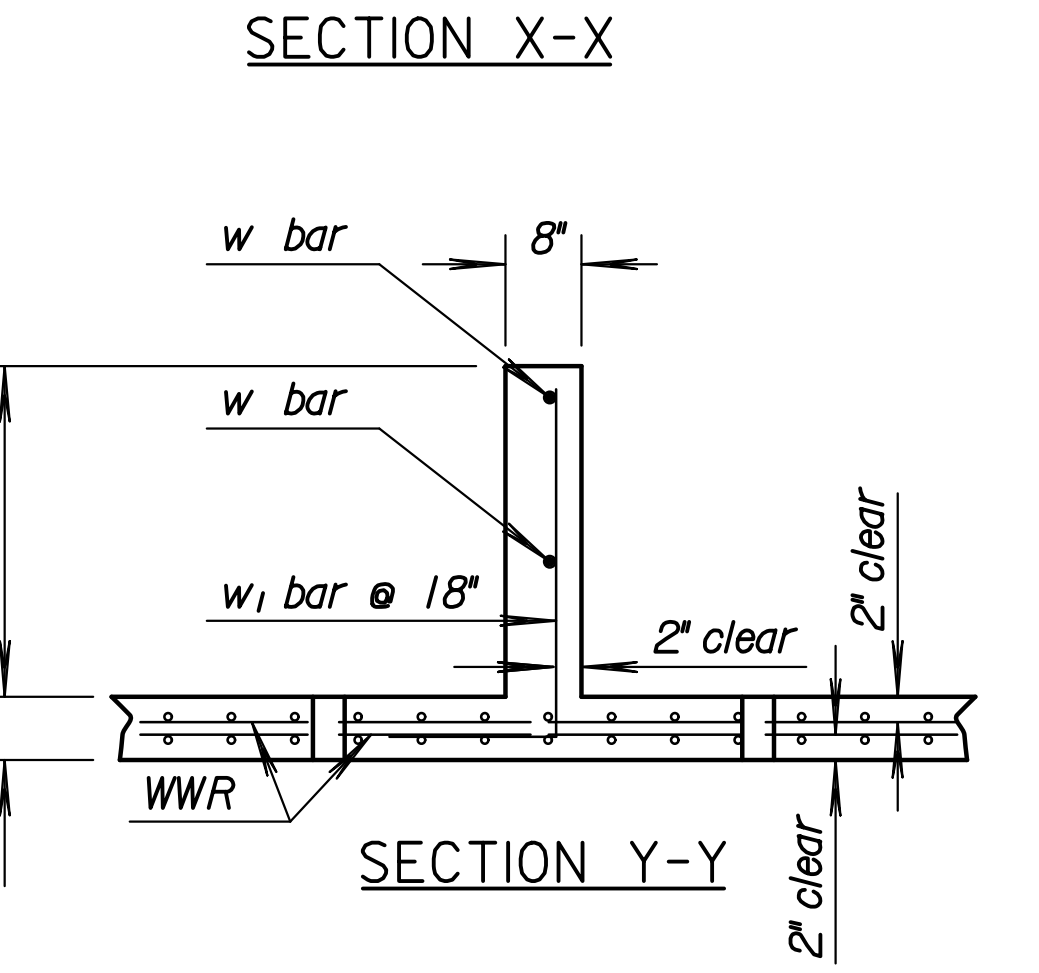
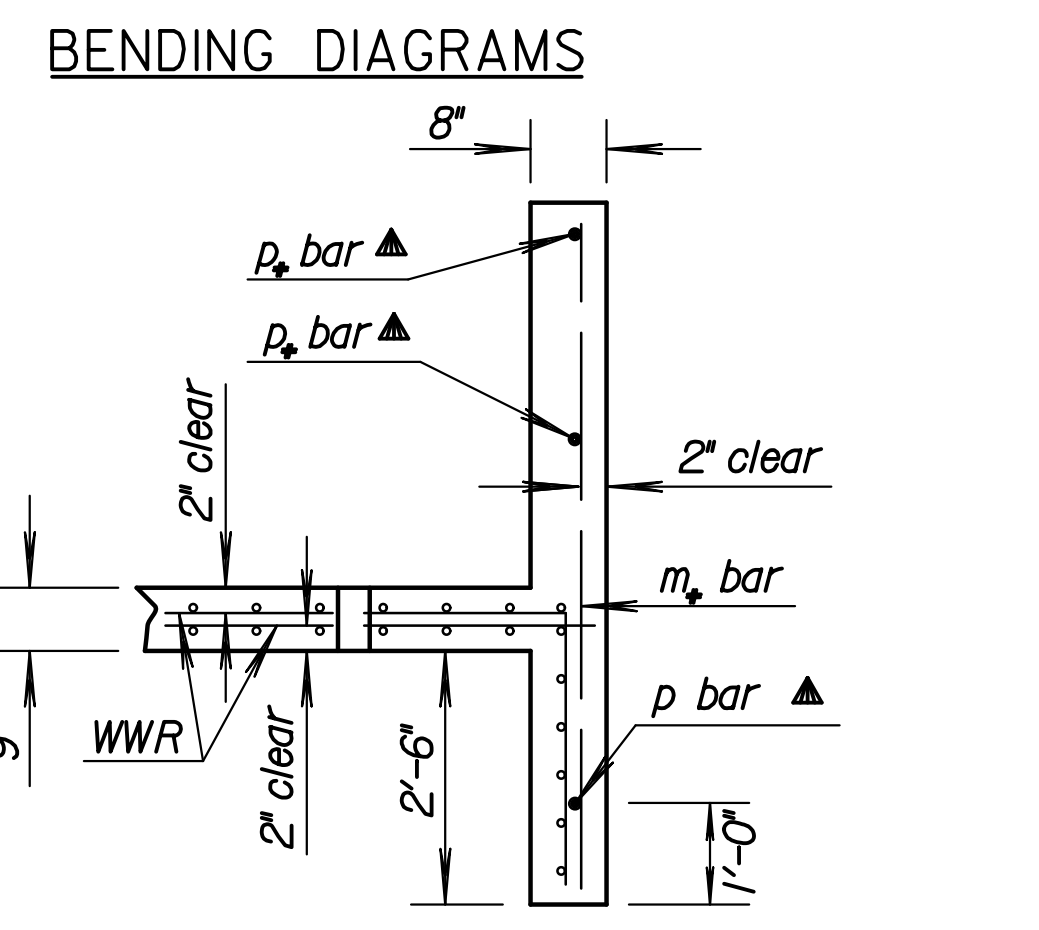
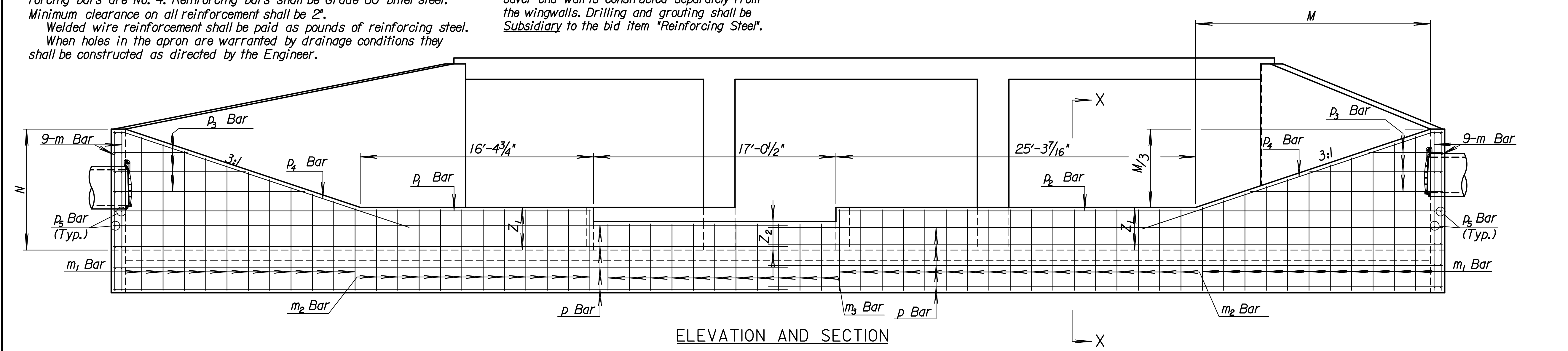
STATE	PROJECT NO.	YEAR	SHEET NO.	TOTAL SHEETS
KANSAS	468-84636	2011	21	63

Varies from 5'-9" to 10'-9" by 6" Incr. m_1 bar
 Cut 2 Each Length
 Varies from 5'-2" to 13'-6" by 4'-2" Incr. p_3 bar
 Cut 2 Each Length



GENERAL NOTE
 CONCRETE: Concrete Grade 4.0 shall be used throughout. All exposed edges shall be finished with an edging tool.
 REINFORCING: All dimensions are to \mathcal{C} of bar except where noted. All reinforcing bars are No. 4. Reinforcing bars shall be Grade 60 billet steel. Minimum clearance on all reinforcement shall be 2".
 Welded wire reinforcement shall be paid as pounds of reinforcing steel. When holes in the apron are warranted by drainage conditions they shall be constructed as directed by the Engineer.

▲ Drill and grout p and q bars into wingwalls and p_1 bar into wing footings when the soil saver end wall is constructed separately from the wingwalls. Drilling and grouting shall be Subsidiary to the bid item "Reinforcing Steel".



STATION	SIDE LEFT		SKEW 20°										Z ₁ - 3'-0"	Z ₂ - 2'-0"
Letter	B	C	K ₁	K _S	L ₁	L _S	M	N	P	P ₁	P _S	Q		
Dimension	16'-10 1/8"	50'-5 1/2"	11 1/2"	5 5/8"	4'-4 1/2"	3'-8 1/8"	16'-6"	8'-6"	92'-1 3/4"	24'-1 3/16"	11'-9 3/8"	15'-11 1/4"		
Bar	m	m ₁	m ₂	m ₃	p	p ₁	p ₂	p ₃	p ₄	p ₅	w	w ₁	w ₂	x
Number	36	22	22	11	8	1	1	6	2	36	4	46	4	16
Length	11'-2"	Varies	5'-8"	4'-8"	47'-6"	33'-6"	42'-5"	Varies	21'-9"	12'-9"	30'-11"	4'-5"	7'-0"	5'-0"

Station	Culvert Size	Side	Z ₁	Z ₂	Skew	Rotation
4574+35.00	3-16'x12'	Left	3'-0"	2'-0"	20° Rt.	0°

* Double Layer WWR @ 21 Lbs/100 Sq. Ft.
 ● WWR Included in Weight

Quantities include apron and soil saver end wall.

NO.	DATE	REVISIONS	BY	APP'D
2	04-28-05	Chg. Class to Grade concrete, WWR	S.W.K.	J.O.B.
1	08-01-00	Revised Drill & Grout Note	R.J.S.	J.O.B.

KANSAS DEPARTMENT OF TRANSPORTATION

RD520

SOIL SAVER FOR R.C. CULVERTS

DESIGNED	6-10-05	APP'D	James O. Brewer
QUANTITIES	TRACED	QUANTITIES	TRACED
DETAIL CK.	DETAIL CK.	QUAN. CK.	TRACE CK.

Plotted By: cp Date: 7/26/2011 11:45:36 AM
 FILE: I:\2010\0291\0291-SoilSaver.ras.dgn