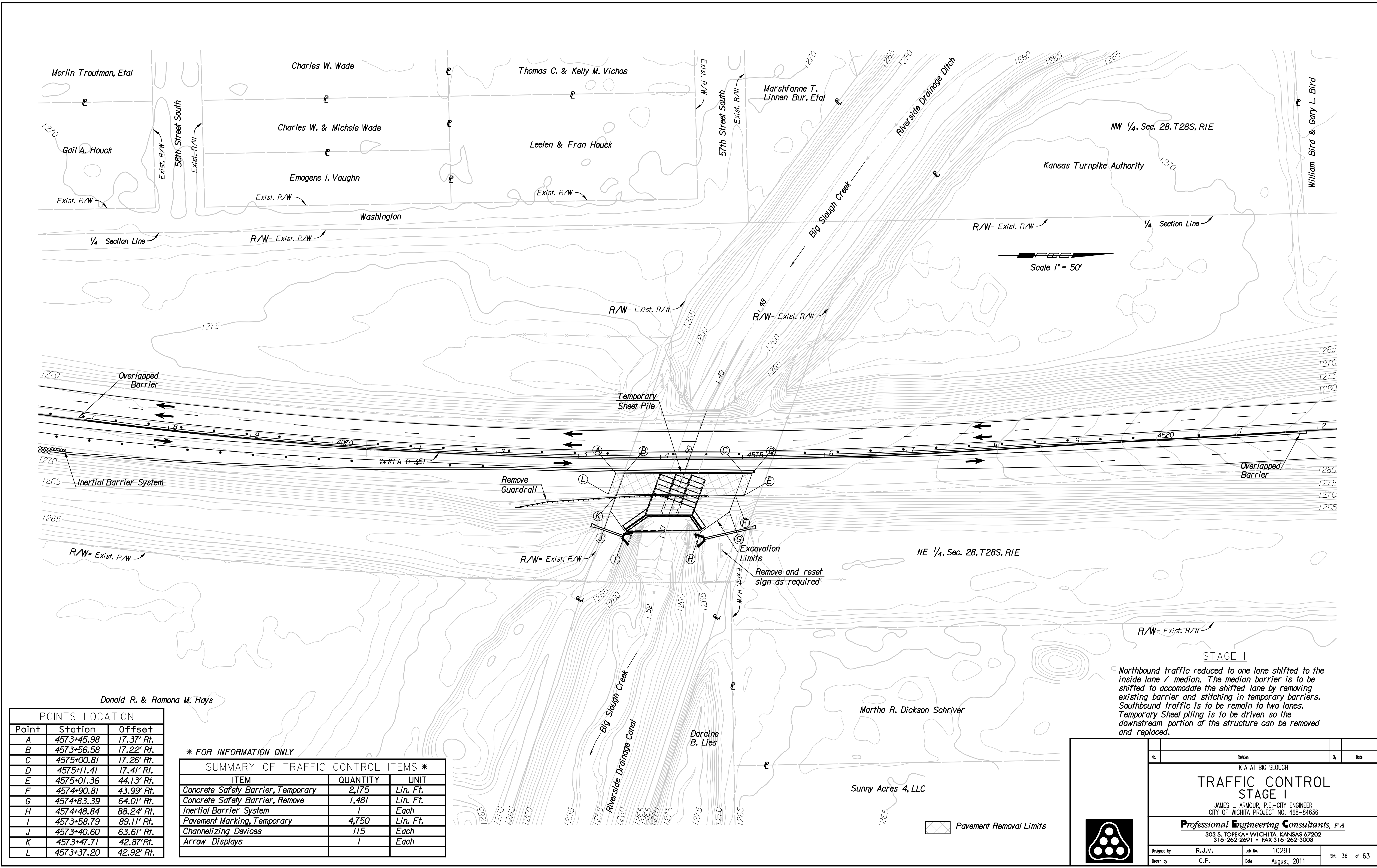


Plotted By: cp Date: 7/26/2011 11:45:43 AM
 FILE: I:\2010\0291\0291-TC IPC.dgn



POINTS LOCATION

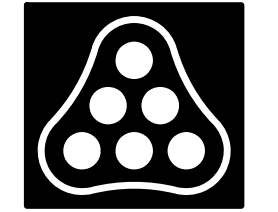
Point	Station	Offset
A	4573+45.98	17.37' Rt.
B	4573+56.58	17.22' Rt.
C	4575+00.81	17.26' Rt.
D	4575+11.41	17.41' Rt.
E	4575+01.36	44.13' Rt.
F	4574+90.81	43.99' Rt.
G	4574+83.39	64.01' Rt.
H	4574+48.84	88.24' Rt.
I	4573+58.79	89.11' Rt.
J	4573+40.60	63.61' Rt.
K	4573+47.71	42.87' Rt.
L	4573+37.20	42.92' Rt.

* FOR INFORMATION ONLY

SUMMARY OF TRAFFIC CONTROL ITEMS *		
ITEM	QUANTITY	UNIT
Concrete Safety Barrier, Temporary	2,175	Lin. Ft.
Concrete Safety Barrier, Remove	1,481	Lin. Ft.
Inertial Barrier System	1	Each
Pavement Marking, Temporary	4,750	Lin. Ft.
Channelizing Devices	115	Each
Arrow Displays	1	Each

STAGE I
 Northbound traffic reduced to one lane shifted to the inside lane / median. The median barrier is to be shifted to accommodate the shifted lane by removing existing barrier and stitching in temporary barriers. Southbound traffic is to be remain to two lanes. Temporary Sheet piling is to be driven so the downstream portion of the structure can be removed and replaced.

Pavement Removal Limits



No.	Revision	By	Date
KTA AT BIG SLOUGH			
TRAFFIC CONTROL STAGE I			
JAMES L. ARMOUR, P.E. - CITY ENGINEER CITY OF WICHITA PROJECT NO. 468-84636			
Professional Engineering Consultants, P.A. 303 S. TOPKA • WICHITA, KANSAS 67202 316-262-2691 • FAX 316-262-3003			
Designed by	R.J.M.	Job No.	10291
Drawn by	C.P.	Date	August, 2011
			Sht. 36 of 63