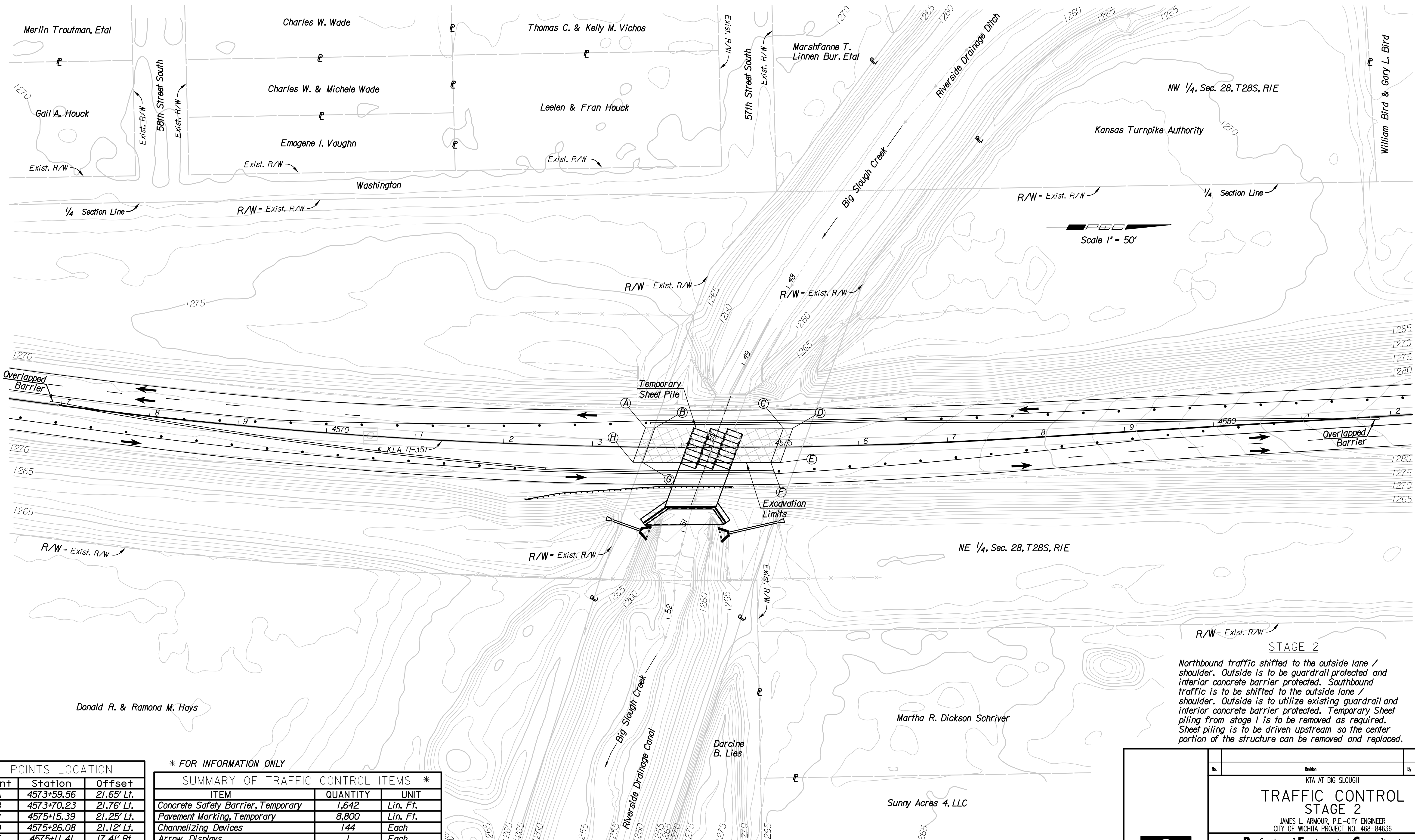


Plotted By: gp Date: 7/26/2011 11:45:45 AM
 FILE: I:\2010\10291\10291-TC 2 PC.dgn



Scale 1" = 50'

STAGE 2
 Northbound traffic shifted to the outside lane / shoulder. Outside is to be guardrail protected and interior concrete barrier protected. Southbound traffic is to be shifted to the outside lane / shoulder. Outside is to utilize existing guardrail and interior concrete barrier protected. Temporary Sheet piling from stage 1 is to be removed as required. Sheet piling is to be driven upstream so the center portion of the structure can be removed and replaced.

Pavement Removal Limits

POINTS LOCATION		
Point	Station	Offset
A	4573+59.56	21.65' Lt.
B	4573+70.23	21.76' Lt.
C	4575+15.39	21.25' Lt.
D	4575+26.08	21.12' Lt.
E	4575+11.41	17.41' Rt.
F	4575+00.81	17.26' Rt.
G	4573+56.58	17.22' Rt.
H	4573+45.98	17.37' Rt.

* FOR INFORMATION ONLY

SUMMARY OF TRAFFIC CONTROL ITEMS *		
ITEM	QUANTITY	UNIT
Concrete Safety Barrier, Temporary	1,642	Lin. Ft.
Pavement Marking, Temporary	8,800	Lin. Ft.
Channelizing Devices	144	Each
Arrow Displays	1	Each

No.	Revision	By	Date
KTA AT BIG SLOUGH TRAFFIC CONTROL STAGE 2 JAMES L. ARMOUR, P.E. - CITY ENGINEER CITY OF WICHITA PROJECT NO. 468-84636 Professional Engineering Consultants, P.A. 303 S. TOPEKA • WICHITA, KANSAS 67202 316-262-2691 • FAX 316-262-3003			
Designed by	R.J.M.	Job No.	10291
Drawn by	C.P.	Date	August, 2011

Sht. 39 of 63