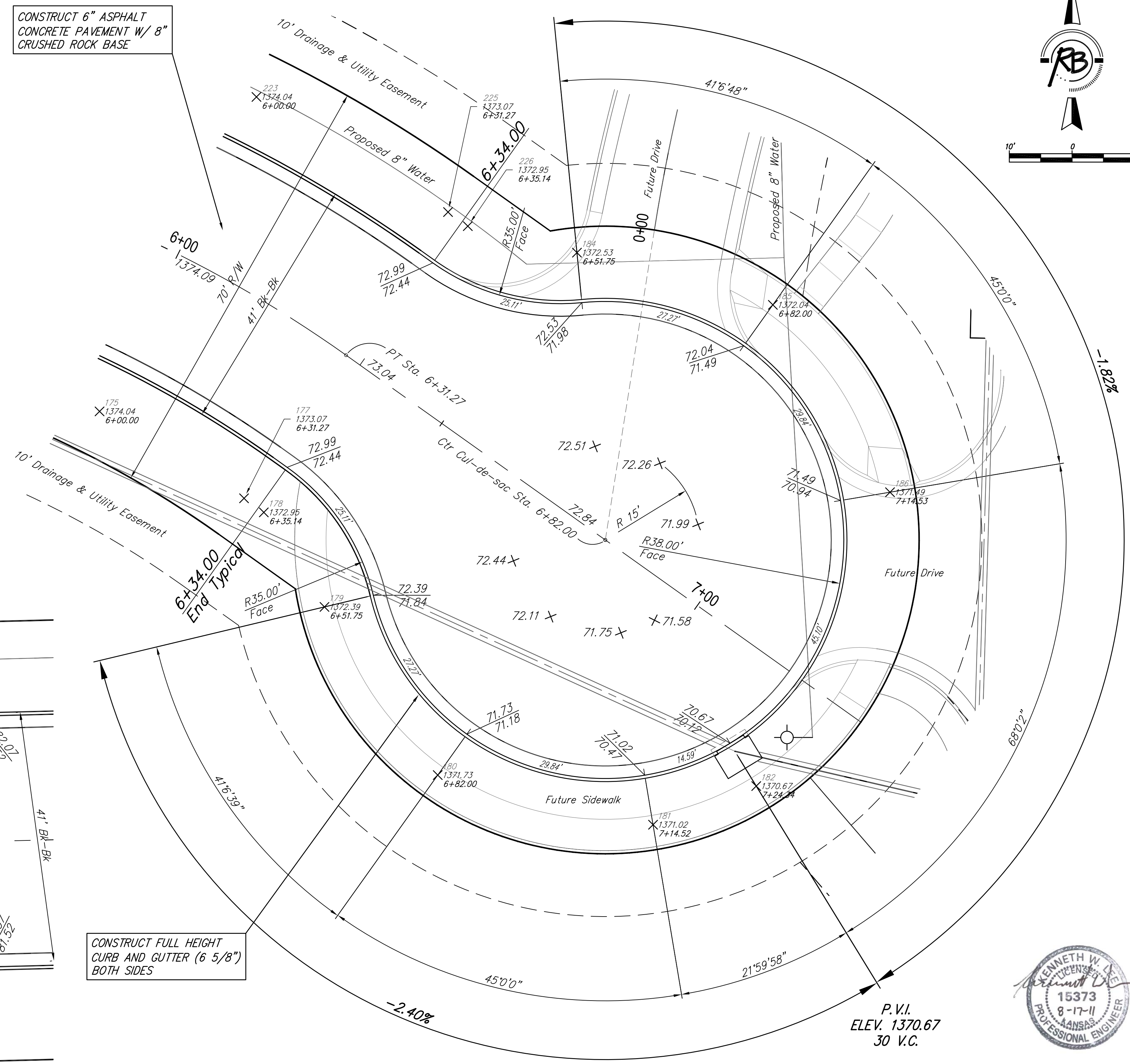


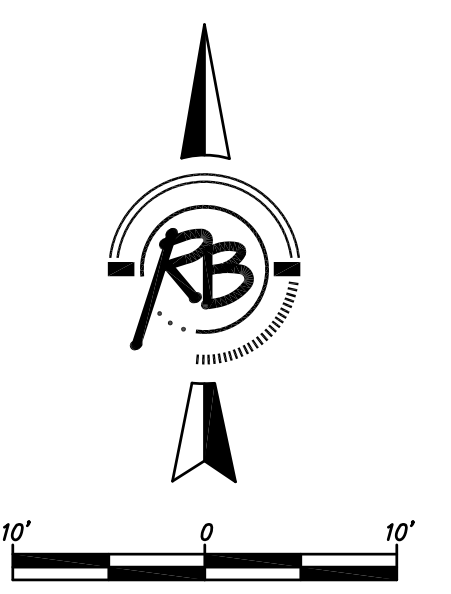
ENTRANCE DETAILS

CONSTRUCT 6" ASPHALT CONCRETE PAVEMENT W/ 8" CRUSHED ROCK BASE

CONSTRUCT FULL HEIGHT CURB AND GUTTER (6 5/8") BOTH SIDES



CUL-DE-SAC DETAILS



REEDS COVE MEDICAL CAMPUS PAVING DETAILS WICHITA, KANSAS		DESIGN	
	Ruggles & Bohm, P.A. Engineering, Surveying, Land Planning	DRAWN	
	924 North Main Wichita, Kansas 67203 www.rbkansas.com	(316) 264-8008 (316) 264-4621 fax E-mail: info@rbkansas.com	REVIEW
DRAWING FILE	PROJECT NUMBER	UTILITY	SHEET
		DATE	5
			OF
			16