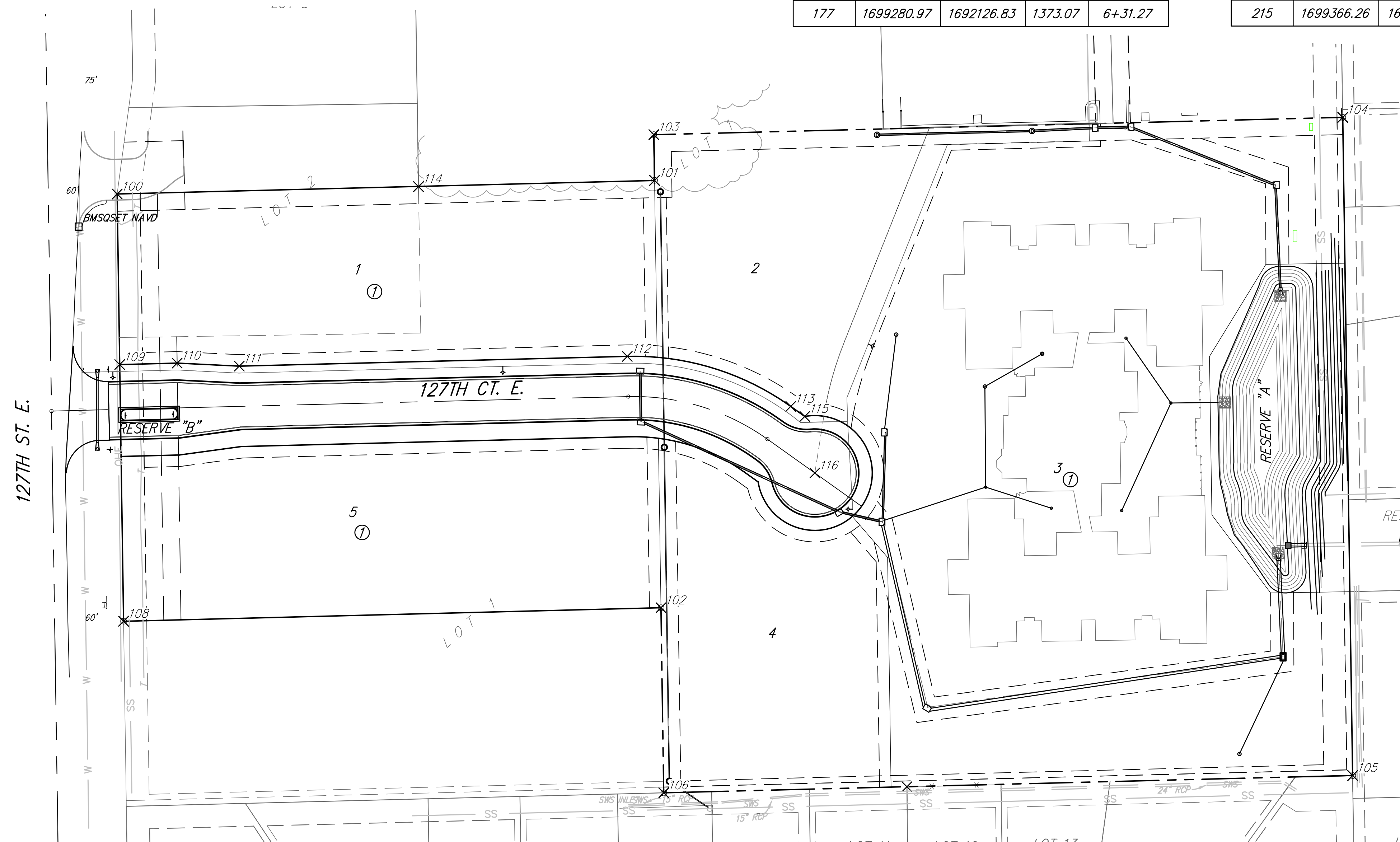


Point Table				
Point #	Northing	Easting	Elev.	Description
100	1699517.20	1691576.91	0.00	COR
101	1699528.99	1692044.81	0.00	COR
102	1699157.02	1692050.45	1377.38	SM MKEC5/8
103	1699568.81	1692044.21	0.00	COR
104	1699583.92	1692644.02	0.00	COR
105	1699010.97	1692652.62	0.00	COR
106	1698995.86	1692052.81	0.00	COR
108	1699145.22	1691582.49	0.00	COR
109	1699368.70	1691579.14	0.00	COR
110	1699369.96	1691629.12	0.00	COR
111	1699367.32	1691683.25	0.00	COR
112	1699375.83	1692021.09	0.00	COR
113	1699332.28	1692163.40	0.00	COR
114	1699523.68	1691839.30	1385.66	SM MKEC5/8
115	1699323.56	1692175.63	0.00	COR
116	1699274.33	1692184.39	0.00	COR

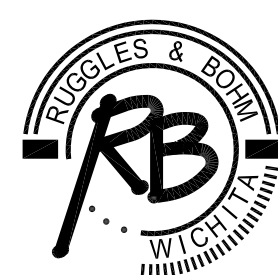
Point Table				
Point #	Northing	Easting	Elev.	Description
150	1699295.46	1691570.58	1381.12	0+50.00
151	1699296.72	1691620.56	1381.60	1+00.00
153	1699296.98	1691630.85	1381.70	1+10.29
155	1699298.98	1691645.51	1381.98	1+25.00
156	1699302.38	1691670.44	1382.04	1+50.00
159	1699304.34	1691684.78	1382.02	1+64.38
161	1699305.24	1691720.38	1381.79	2+00.00
163	1699305.91	1691747.12	1381.44	2+26.75
164	1699306.50	1691770.37	1381.08	2+50.00
165	1699307.76	1691820.35	1380.29	3+00.00
166	1699309.01	1691870.33	1379.50	3+50.00
167	1699310.27	1691920.32	1378.72	4+00.00
168	1699311.53	1691970.30	1377.93	4+50.00
169	1699312.16	1691995.29	1377.49	4+75.00
171	1699312.85	1692022.67	1376.90	5+02.39
172	1699312.25	1692042.10	1376.32	5+25.00
173	1699309.03	1692063.35	1375.59	5+50.00
174	1699303.19	1692084.02	1374.82	5+75.00
175	1699294.81	1692103.81	1374.04	6+00.00
177	1699280.97	1692126.83	1373.07	6+31.27

Point Table				
Point #	Northing	Easting	Elev.	Description
178	1699278.73	1692129.98	1372.95	6+35.14
179	1699263.66	1692139.65	1372.39	6+51.75
180	1699236.87	1692157.70	1371.73	6+82.00
181	1699228.96	1692192.00	1371.02	7+14.52
182	1699235.12	1692208.44	1370.67	7+24.34
184	1699320.11	1692179.88	1372.53	6+51.75
185	1699311.79	1692211.09	1372.04	6+82.00
186	1699281.94	1692229.76	1371.49	7+14.53
198	1699361.44	1691568.92	1381.10	0+50.00
199	1699362.70	1691618.90	1381.61	1+00.00
201	1699362.96	1691629.19	1381.71	1+10.29
203	1699362.24	1691643.92	1381.98	1+25.00
204	1699361.02	1691668.96	1382.04	1+50.00
207	1699360.32	1691683.37	1382.02	1+64.38
209	1699361.22	1691718.97	1381.79	2+00.00
211	1699361.89	1691745.71	1381.44	2+26.75
212	1699362.48	1691768.95	1381.08	2+50.00
213	1699363.74	1691818.94	1380.29	3+00.00
214	1699365.00	1691868.92	1379.50	3+50.00
215	1699366.26	1691918.91	1378.72	4+00.00

Point Table				
Point #	Northing	Easting	Elev.	Description
216	1699367.51	1691968.89	1377.93	4+50.00
217	1699368.14	1691993.88	1377.49	4+75.00
219	1699368.83	1692021.26	1376.90	5+02.39
220	1699368.03	1692047.01	1376.32	5+25.00
221	1699363.76	1692075.17	1375.59	5+50.00
222	1699356.02	1692102.58	1374.82	5+75.00
223	1699344.91	1692128.81	1374.04	6+00.00
225	1699326.58	1692159.33	1373.07	6+31.27
226	1699324.33	1692162.48	1372.95	6+35.14



REEDS COVE MEDICAL CAMPUS
Coordinate Map
WICHITA, KANSAS



Ruggles & Bohm, P.A.
 Engineering, Surveying, Land Planning

924 North Main
 Wichita, Kansas 67203
 www.rbkansas.com

(316) 264-8008
 (316) 264-4621 fax
 E-mail: info@rbkansas.com

DESIGN **KWL**

DRAWN **RA**

REVIEW

UTILITY

DATE

PROJECT NUMBER

...

SHEET

13

OF

16

DRAWING FILE: Paving Details {Coordinate Sheet}