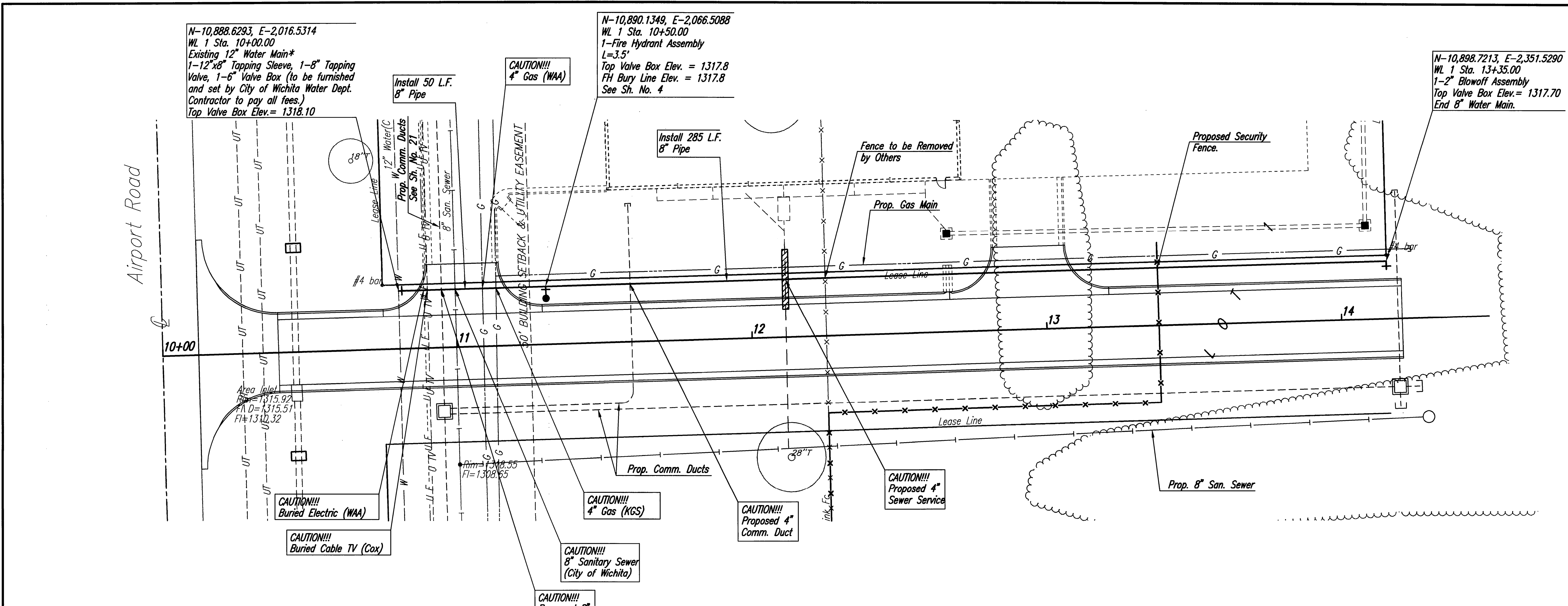


PLAN  
 CHECKED  
 CHECKED  
 BY  
 DATE

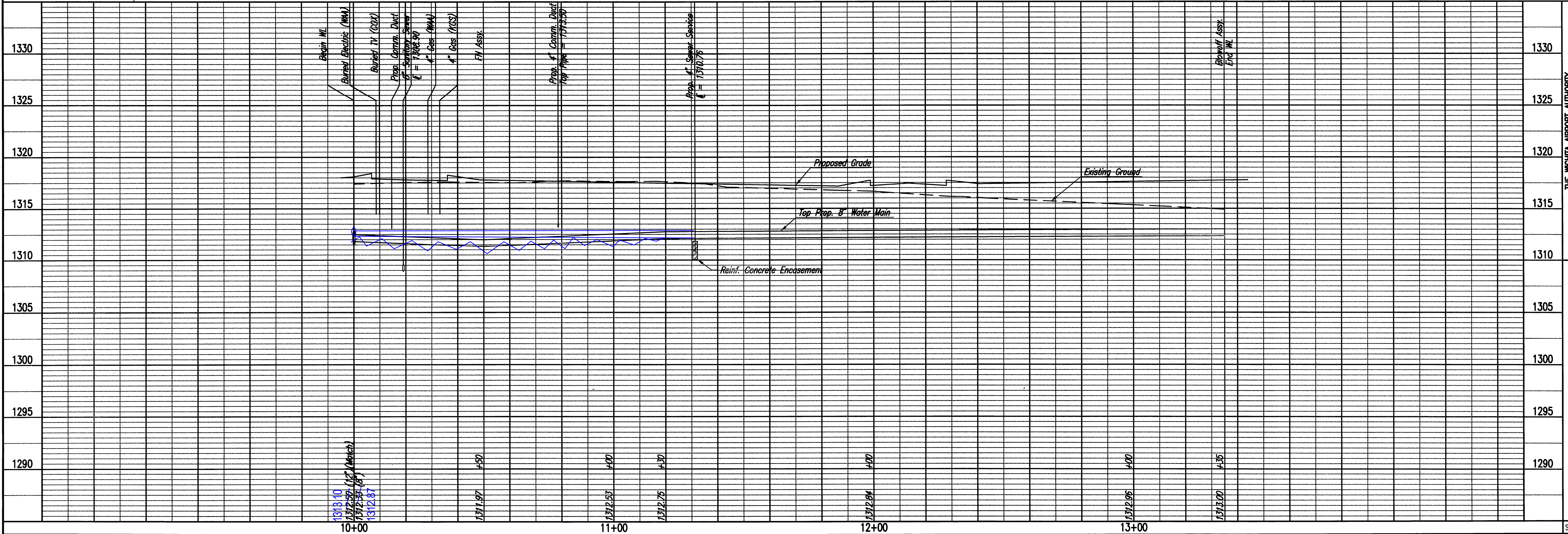
PROFILE  
 CHECKED  
 CHECKED  
 BY  
 DATE

Saved 06-28-2011 1:53:55 PM by JAN  
 Plot Scale 1:20 07-08-2011 8:40:13 AM  
 C:\2011\11121-001\PPM\3-WATER PLAN



Unless noted otherwise, elevations shown are top of pipe.

WATERLINE NO. 1



\* PRIOR TO BEGINNING CONSTRUCTION, THE CONTRACTOR SHALL EXCAVATE THE EXISTING 12" WATERLINE AT STATION 10+00.00 TO VERIFY PIPE SIZE, TYPE, FITTINGS, AND HORIZONTAL AND VERTICAL LOCATION. THE CONTRACTOR SHALL REPORT HIS FINDINGS TO THE ENGINEER SO THAT ANY NECESSARY PLAN MODIFICATIONS CAN BE MADE. ANY ADDITIONAL LABOR OR MATERIALS NECESSARY TO COMPLETE THE CONNECTION SHALL BE CONSIDERED SUBSIDIARY TO THE PROJECT. CONTRACTOR SHALL ALSO DETERMINE VERTICAL AND HORIZONTAL LOCATIONS OF BURIED ELECTRIC AND GAS LINES PRIOR TO CONSTRUCTION TO DETERMINE IF ANY PLAN MODIFICATIONS NEED TO BE MADE. NO ADDITIONAL PAYMENT WILL BE MADE FOR ADJUSTMENTS THAT NEED TO BE MADE TO THE WATERLINE TO AVOID CONFLICTS WITH EXISTING UTILITIES.

SCALE: 1"=20'



Professional Engineering Consultants, P.A.  
 303 S. TOPEKA • WICHITA, KANSAS 67202  
 316-262-2691 • FAX 316-262-3003  
 Job No. 11121-001  
 Date May 2011  
 Designed By DAR  
 Drawn By JDT  
 THE WICHITA AIRPORT AUTHORITY  
 MID-CONTINENT AIRPORT  
 WATERLINE NO. 1  
 TAXWAY H-1 WEST DEVELOPMENT  
 PRIVATE PROJECT NO. 1802 PPH (67853)  
 Sheet 3 of 8