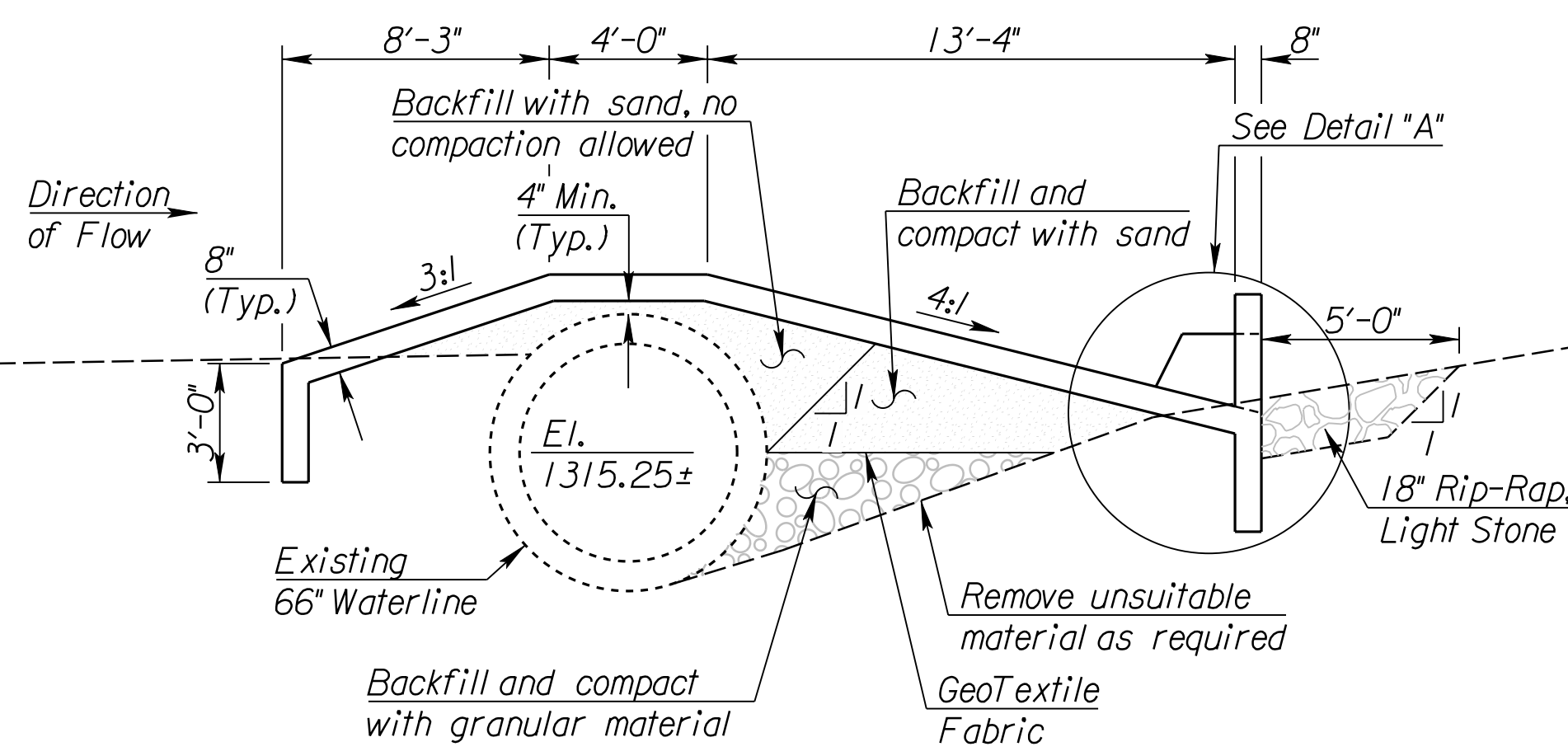


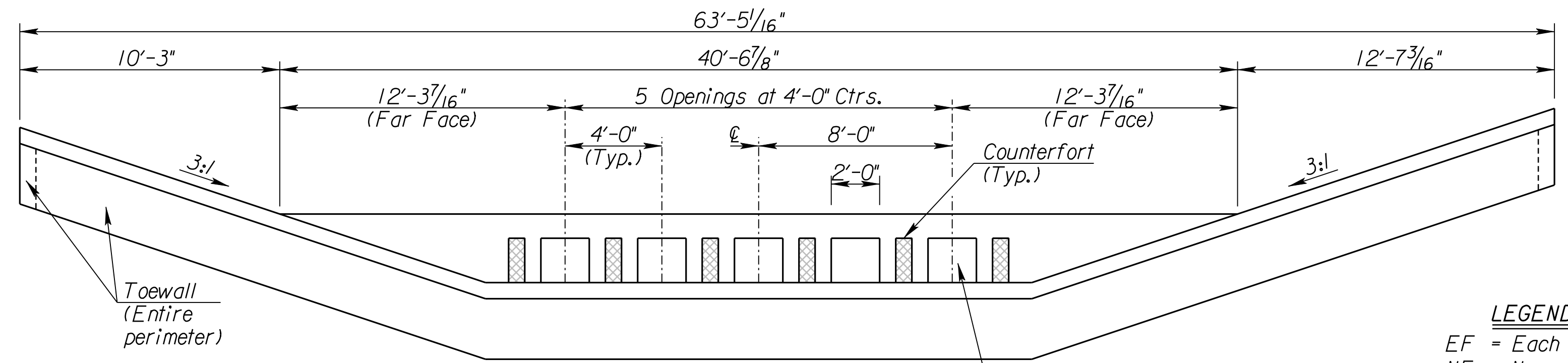
STATE	PROJECT NO.	YEAR	SHEET NO.	TOTAL SHEETS
KANSAS	448-90510	2011	3	9



**SECTION A-A**  
1/4" = 1'-0"

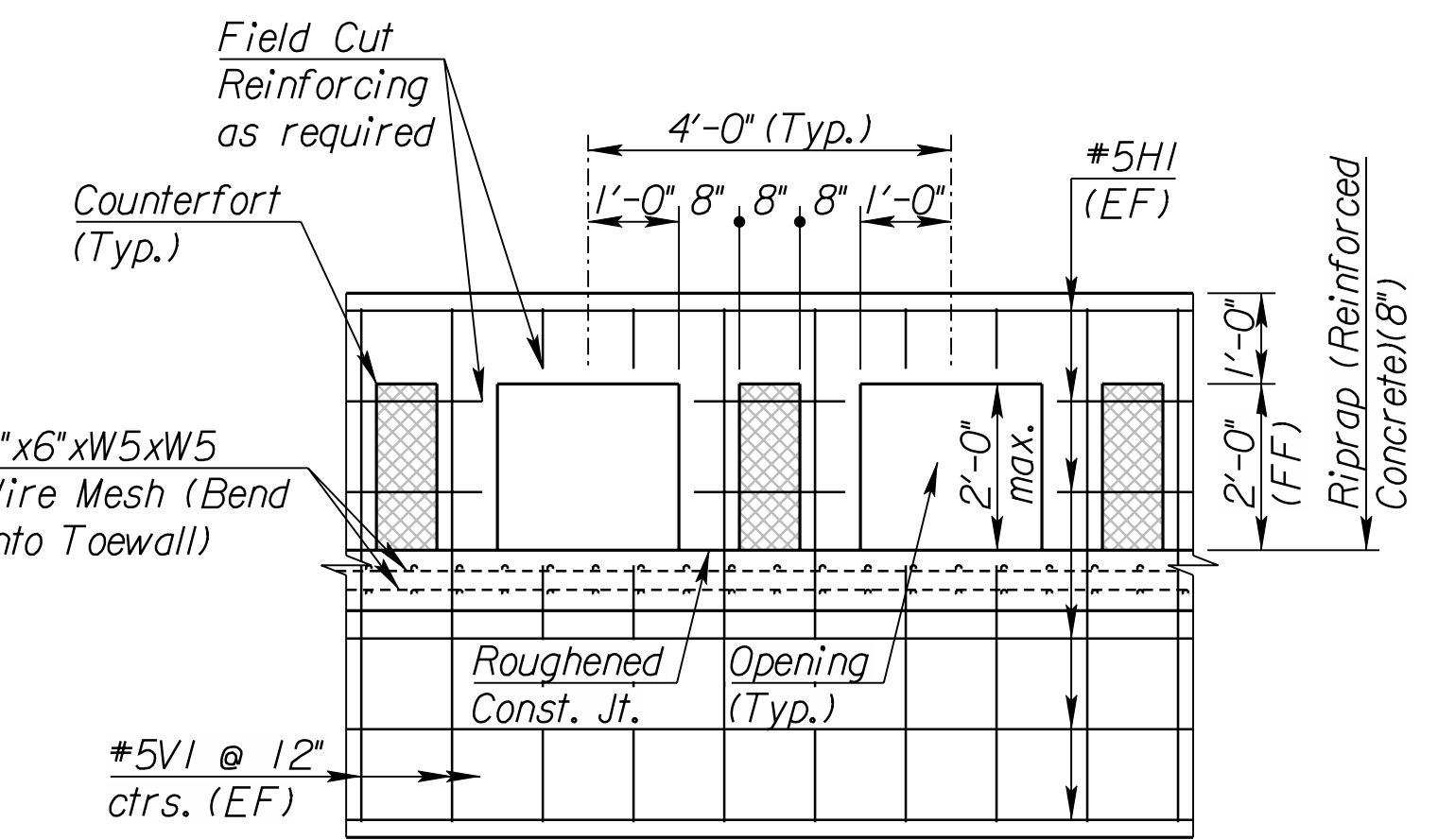
Horizontal dimensions normal to  $\perp$  Waterline.  
See "General Notes" sheet for additional excavation and backfill notes.  
Saddle (Metal) not shown for clarity. See "Section Thru Saddle" on "Reinforced Concrete Riprap Details" sheet.

Point	Sta.	Offset	EI.
1	50+49.42	41.66' Lt.	1323.40
2	50+68.77	41.40' Lt.	1316.95
3	50+95.85	41.03' Lt.	1316.95
4	51+12.84	40.81' Lt.	1322.62
5	51+08.74	32.61' Lt.	1319.70
6	51+11.00	28.58' Lt.	1319.70
7	51+27.64	14.36' Lt.	1322.62
8	51+08.40	14.61' Lt.	1316.20
9	50+85.82	14.92' Lt.	1316.20
10	50+64.23	15.20' Lt.	1323.40
11	50+67.43	29.16' Lt.	1319.70
12	50+65.17	33.19' Lt.	1319.70



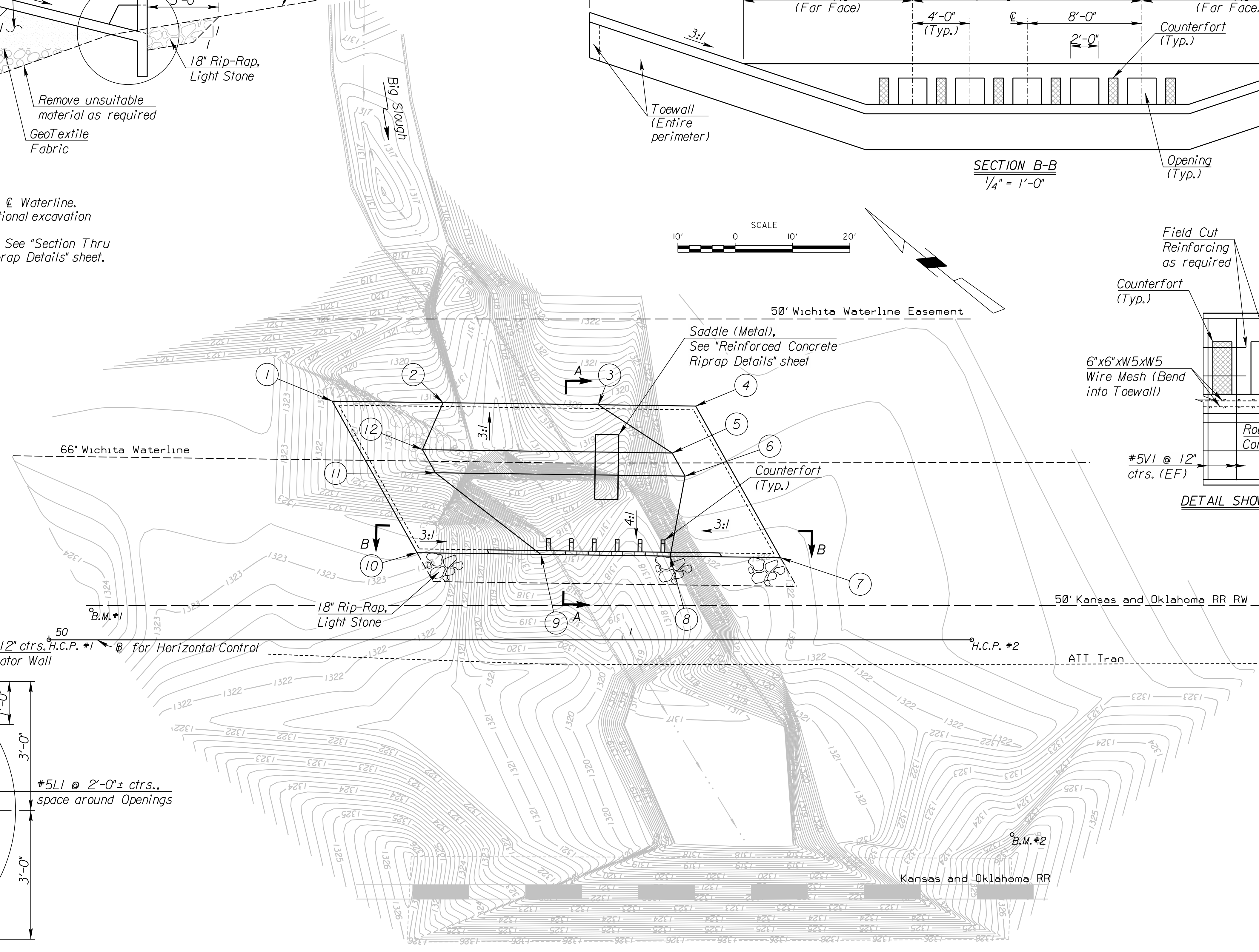
**SECTION B-B**  
1/4" = 1'-0"

**LEGEND**  
EF = Each Face  
NF = Near Face  
FF = Far Face

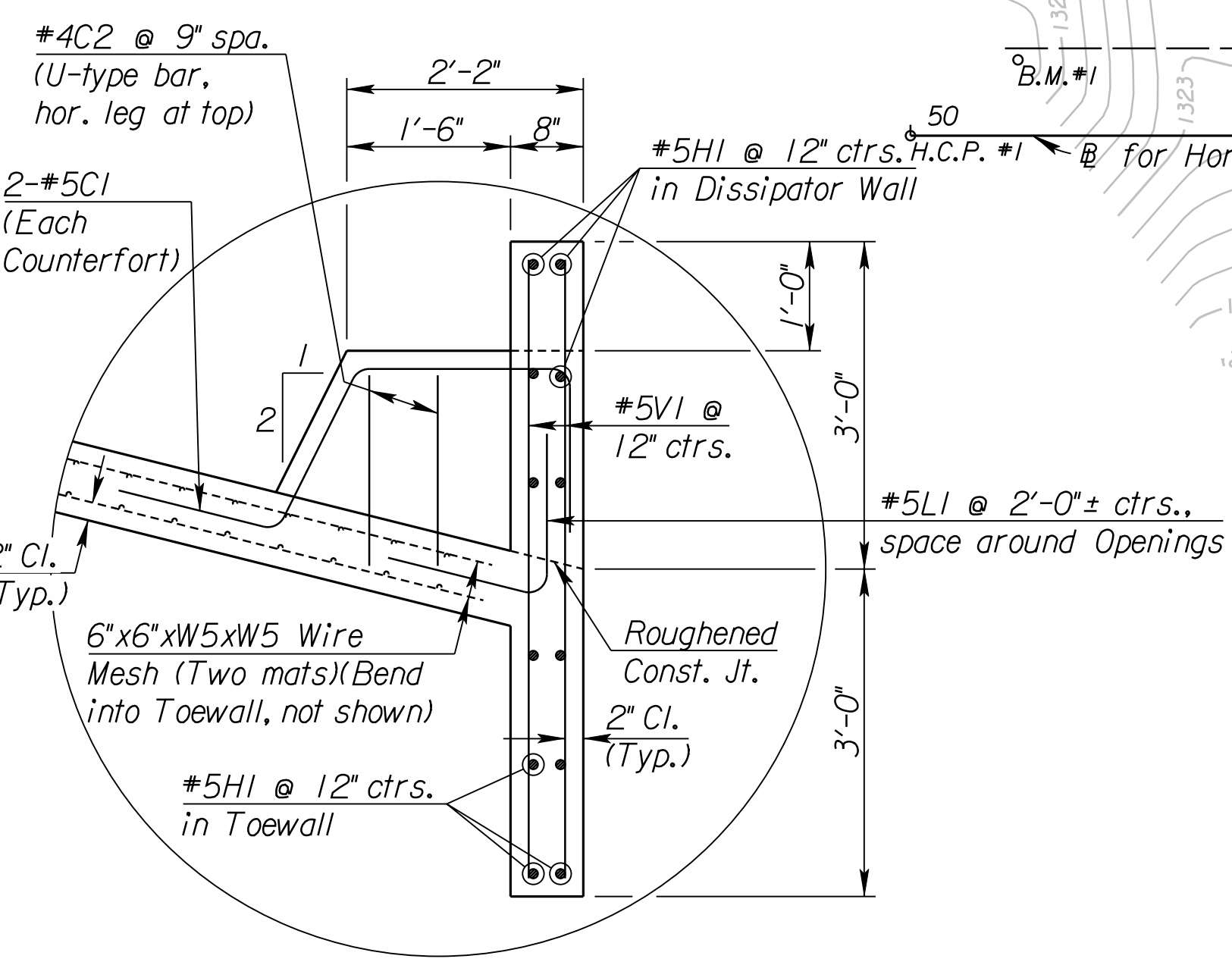


**DETAIL SHOWING COUNTERFORTS AND OPENINGS**  
1/2" = 1'-0"

#5C1 & #5L1 reinforcing not shown for clarity



**PLAN**  
1" = 10'-0"



**DETAIL "A"**  
3/4" = 1'-0"

* SUMMARY OF LUMP SUM QUANTITIES	
Fill, Select Granular Backfill	20 C.Y.
Rip-Rap, Light Stone	35 S.Y.
Fill, Sand (Flushed & Vibrated)	40 C.Y.
Riprap (Reinforced Concrete)(8")	185 S.Y.
Saddle (Metal)	1 L.S.
Site Clearing	1 L.S.
Site Restoration	1 L.S.
Seeding/Mulching/Fertilizing	1 L.S.

See Sh. #2 for General Notes and Utility Owners.  
See Sh. #4 for Joint & Saddle Details and Dissipator Bending Diagrams.  
\* See Sh. #5 for Erosion Control quantities.

CITY OF WICHITA  
JAMES ARMOUR, P.E., CITY ENGINEER  
66" WATERLINE PROTECTION  
**DETAILS**

**PB PARSONS BRINCKERHOFF**  
Wichita, Kansas

SCALE: \_\_\_\_\_ DATE: 7/18/2011 DWG. NO.: 35778A

B.M. #1 PK Nail Step in AT&T Sign Post  
 $\perp$  Sta. 50+07.39 5.21' Lt. El. 1324.37  
Sea Level Datum NAV 1988

H.C.P. #1 1/2" Rebar with Orange Cap stamped PBQD HCP  
Nail and tin in AT&T sign post 9.50' NE  
Nail and tin in a small cottonwood tree 33.30' NW  
 $\perp$  Kansas and Oklahoma Railroad 44.00' SW  
El. 1322.86 Sea Level Datum NAV 1988

H.C.P. #2 1/2" Rebar with Orange Cap stamped PBQD HCP  
Nail and tin in AT&T sign post 7.95' ENE  
Nail and tin in a cottonwood tree 57.70' WNW  
El. 1322.60 Sea Level Datum NAV 1988

B.M. #2 Chiseled square on top of concrete wall,  
NE corner of RR bridge  
Sta. 51+68.06 33.99' Rt. El. 1324.72  
Sea Level Datum NAV 1988

T:\35778A\CADD\SHEETS\GENERAL\66WL\_DET10.dgn SURV. PLOT CADD DES. DR. TR. CKD. APP.