

BENCHMARKS:
 BM #1 - City Disk at northeast corner of bridge for Big Slough at 29th St North.
 Elev. = 1330.34 (NAVD 88)

BM #2 - Top of T-Post. 47' W. & 34' N. of the SW corner of Lot 4, Block 4, Ridge Port Addition.
 Elev. = 1322.44 (NAVD 88)

BM #3 - Top of T-Post. 95' N & W of the northwest corner of bridge for Big Slough at 29th St North.
 Elev. = 1322.44 (NAVD 88)

BFE Elev. = 1326.0

NOTES:
Wetland Protection
 Restore light stone riprap along access way.
Sprinkler System
 The Contractor shall be required to repair any damage which may occur during construction.
Concrete
 All concrete used in weir construction shall be air entrained 4,000 PSI or greater. Good concrete finish: Top edges shall be screed with chamfered edges on top.
Sheet Piling
 Sheet piling shall meet structural requirements of PZC 26 or greater.
Rebar
 Minimum splice length for #4 rebar shall be 16". All rebar shall have minimum 2" clearance on all sides.

CAUTION!
 U/G Irrigation System In Area (not field verified). The Contractor shall be required to repair any damage which may occur during construction. Coordinate repair work with Brandon Hay with Ridge Port H.O.A. at (316)640-8533. Cost Incidental to "Site Restoration"

*Existing Wetlands area to remain undisturbed and shall be protected with Yellow Caution Tape. Protection shall be approved by the Engineer prior to beginning construction. Cost Incidental to "Site Restoration"

Begin removal of existing concrete bag rip-rap & rubber pond liner. Cost Incidental to "Site Clearing"

Remove existing Light Stone rip-rap within ditch section and relocate clean rip-rap to east bank of ditch. Existing grouted rip-rap bags & rubber liner shall not be reused and shall be disposed of by the Contractor. Cost Incidental to "Site Restoration"

Install 100 S.Y. Heavy Stone Rip-rap east side and 100 S.Y. Heavy Stone west side as indicated.

All existing trees on east bank shall be protected from damage during construction.

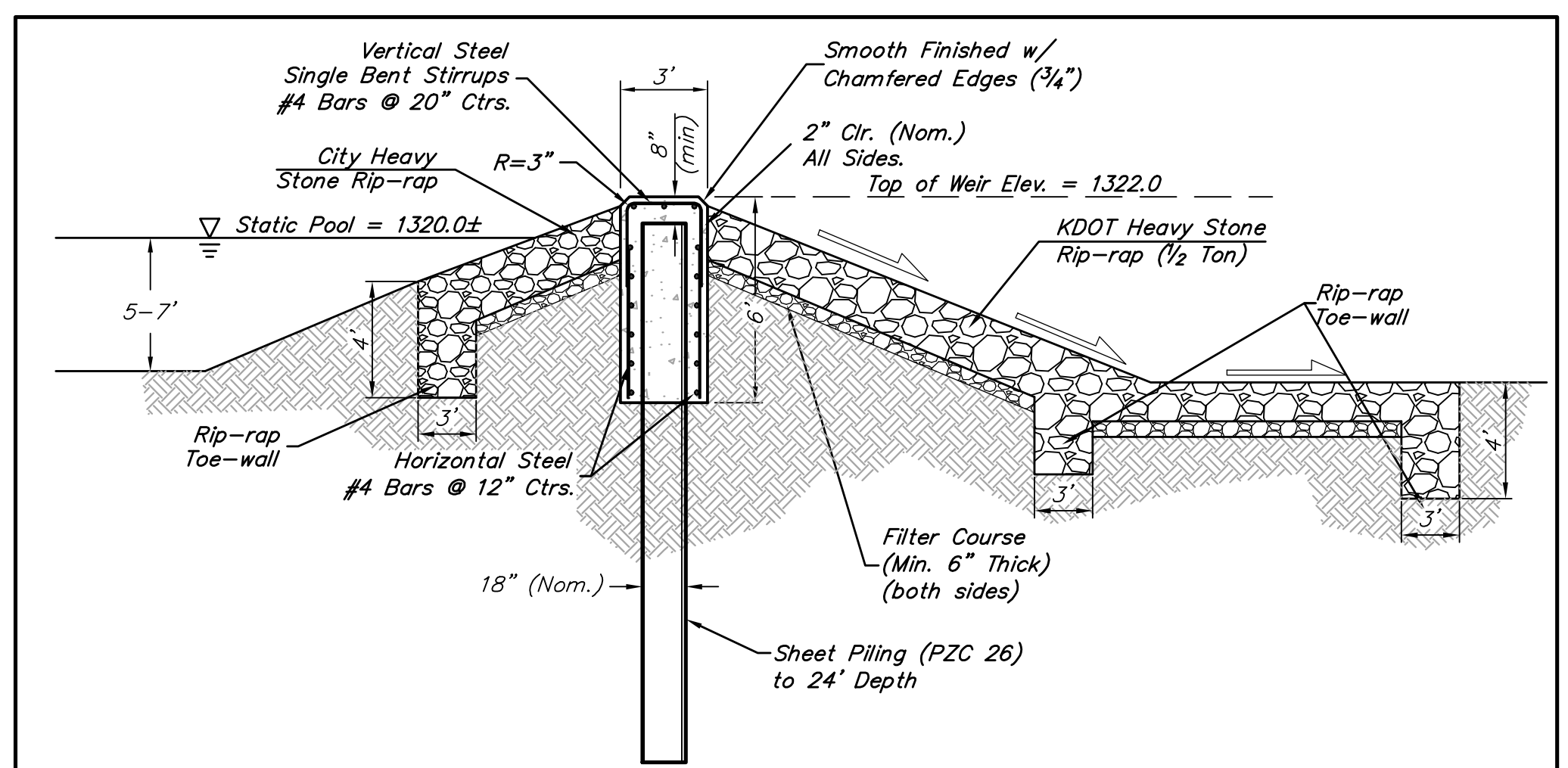
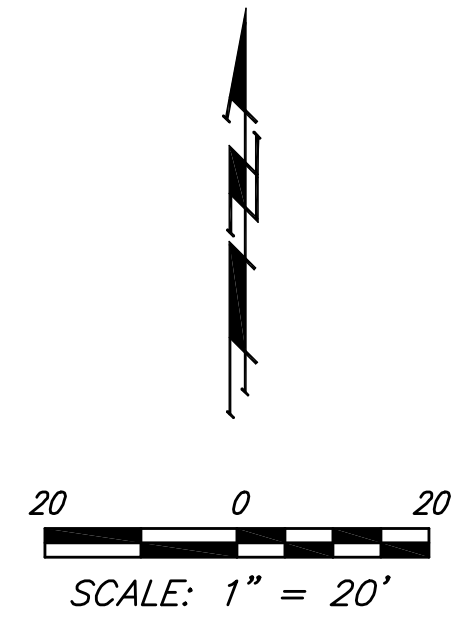
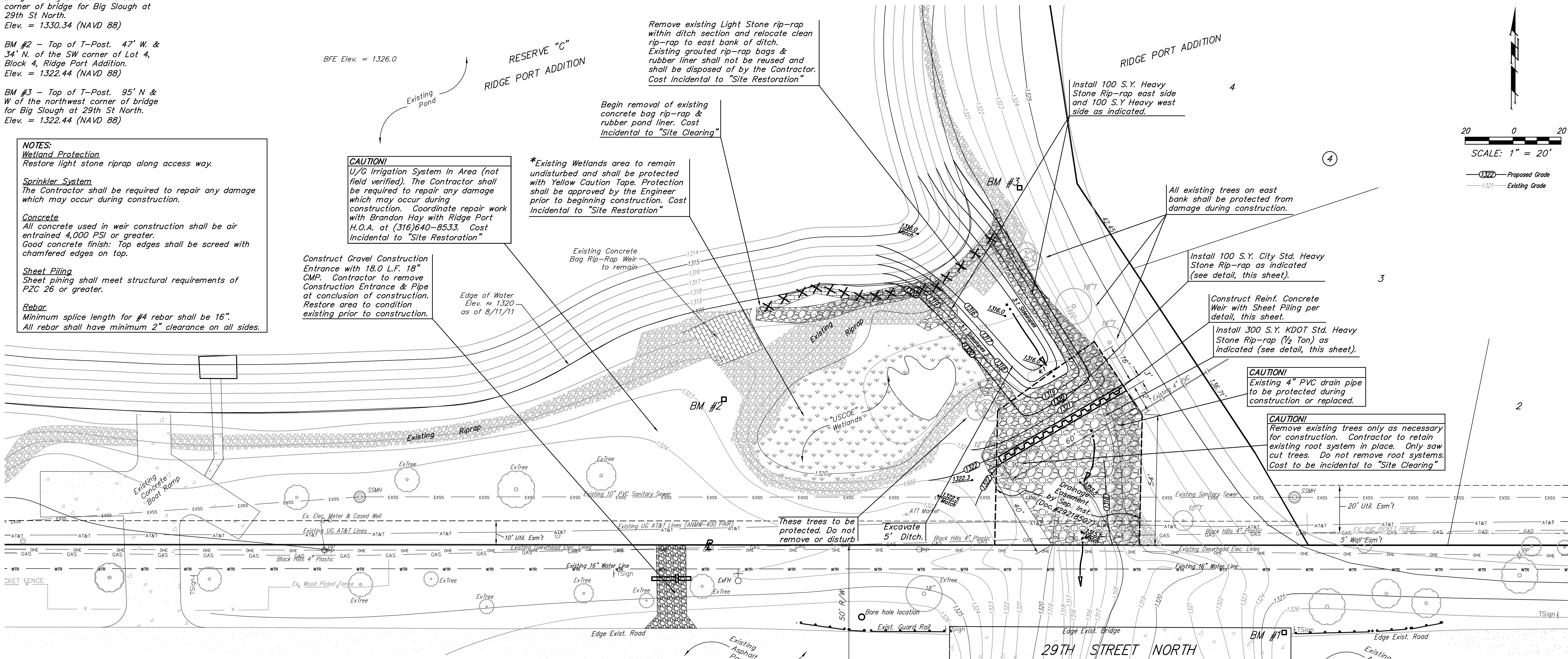
Install 100 S.Y. City Std. Heavy Stone Rip-rap as indicated (see detail, this sheet).

Construct Reinf. Concrete Weir with Sheet Piling per detail, this sheet.

Install 300 S.Y. KDOT Std. Heavy Stone Rip-rap (1/2 Ton) as indicated (see detail, this sheet).

CAUTION!
 Existing 4" PVC drain pipe to be protected during construction or replaced.

CAUTION!
 Remove existing trees only as necessary for construction. Contractor to retain existing root system in place. Only saw cut trees. Do not remove root systems. Cost to be incidental to "Site Clearing"



REINFORCED CONCRETE WEIR W/ SHEET PILING

		Stormwater Drain #378	
		Reinf. Conc. Weir	
Baughman Company, P.A. 315 Ella St. Wichita, KS 67211 F 316-262-7271 F 316-262-0149		ENGINEERING SURVEYING PLANNING LANDSCAPE ARCHITECTURE	
PROJECT NUMBER 468-84769	DESIGN NBW	DRAWN JAK	
REVISIONS:	APPROVED NBW	DATE 9/08/11	
		SCALE 1" = 20'	
		SHEET	2 OF 9