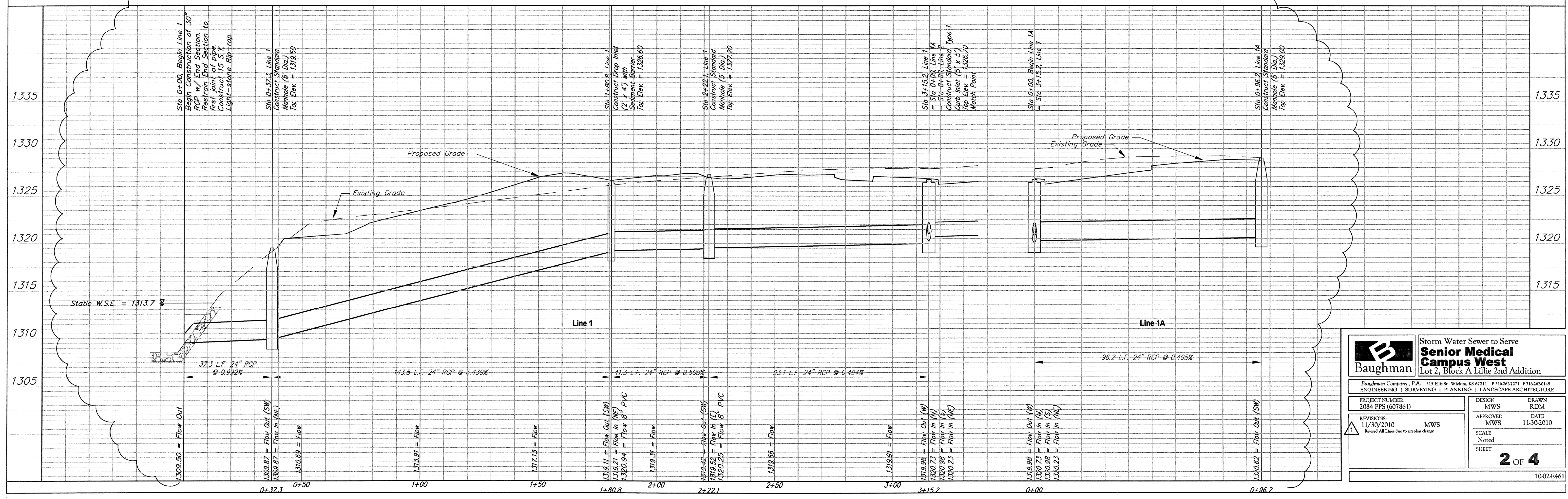
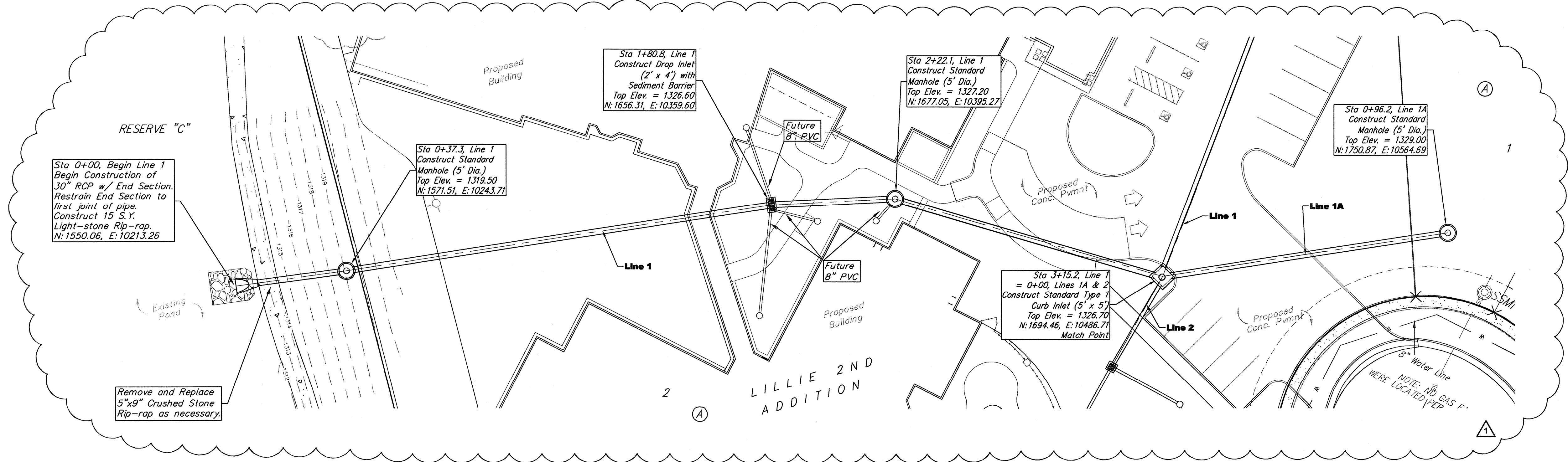
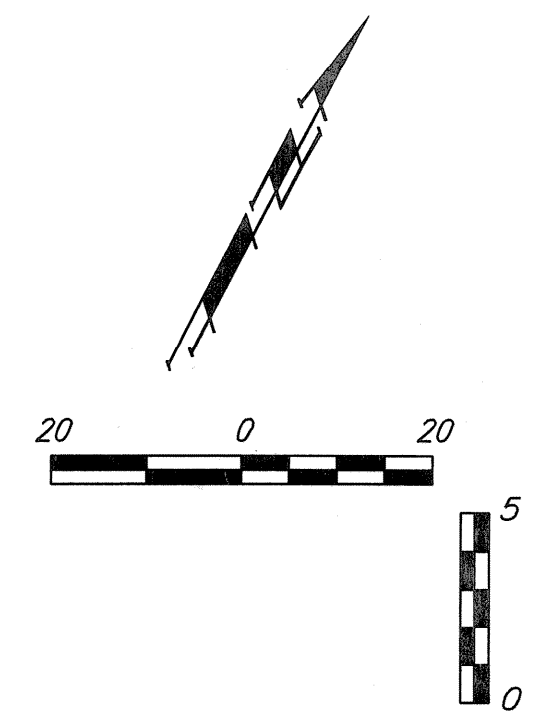


**SITE BENCHMARK:**

"□" Chiseled on Top of Curb,  
southwest corner of Maize  
Cul-de-Sac.  
Elevation = 1328.65 (NAVD 88)



|  |   |                        |
|--|---|------------------------|
|  | <b>Storm Water Sewer to Serve Senior Medical Campus West</b><br>Lot 2, Block A Lillie 2nd Addition  |                        |
|  | Baughman Company, P.A. 315 Ellis St. Wichita, KS 67211 P 316-262-7371 F 316-262-5019<br>ENGINEERING   SURVEYING   PLANNING   LANDSCAPE ARCHITECTURE |                        |
| PROJECT NUMBER<br>2084 PPS (607861)                                    | DESIGN<br>MWS   | DRAWN<br>RDM           |
| REVISIONS:<br>11/30/2010 MWS<br>Revised All Lines due to street change | APPROVED<br>MWS   | DATE<br>11-30-2010     |
| SCALE<br>Noted   |   | SHEET<br><b>2 OF 4</b> |
| 1002-E461  |   |                        |