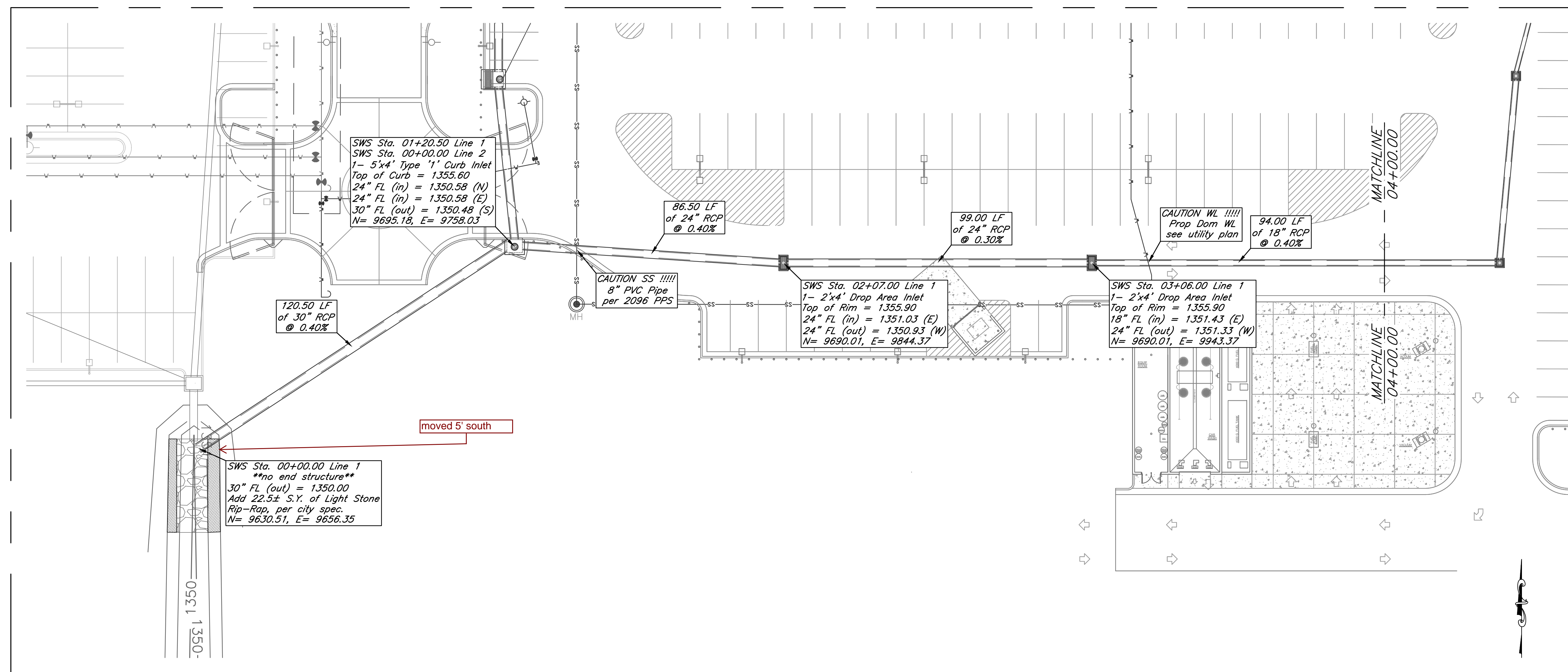
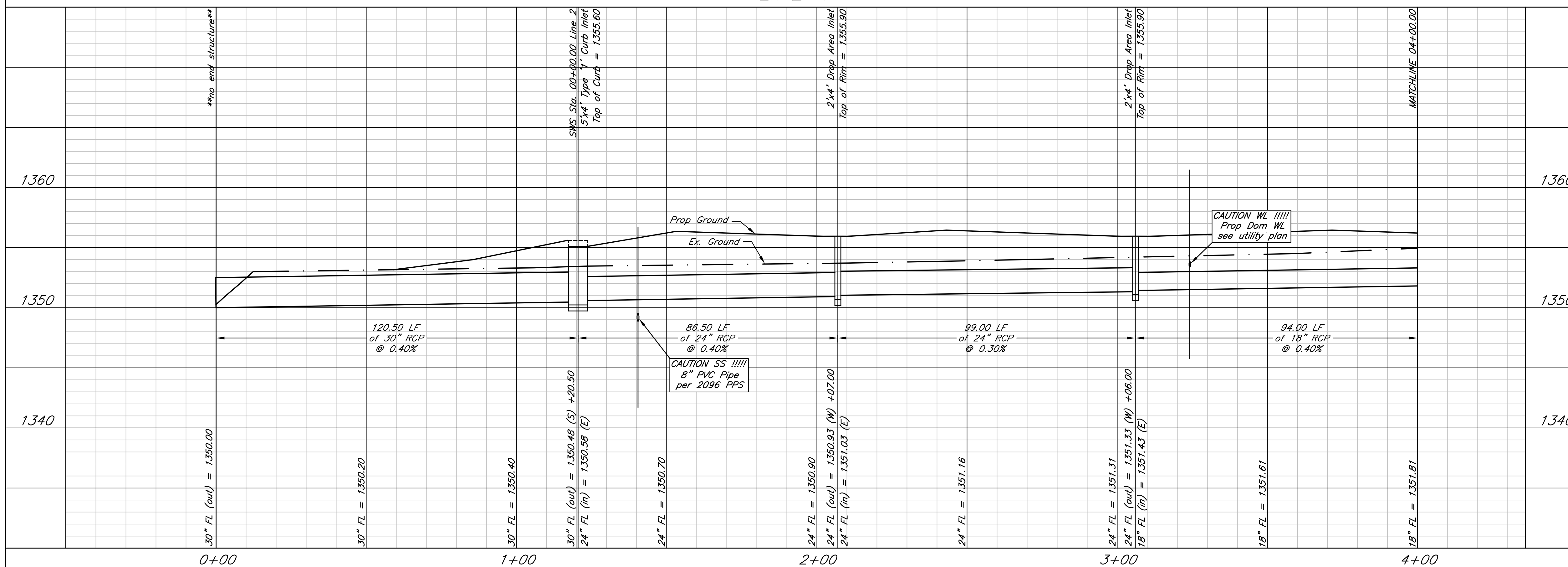


Notes:

- Pipe Backfill / Bedding  
 1. All pipe back fill and pipe bedding to meet City of Wichita specifications, unless otherwise stated by engineer.

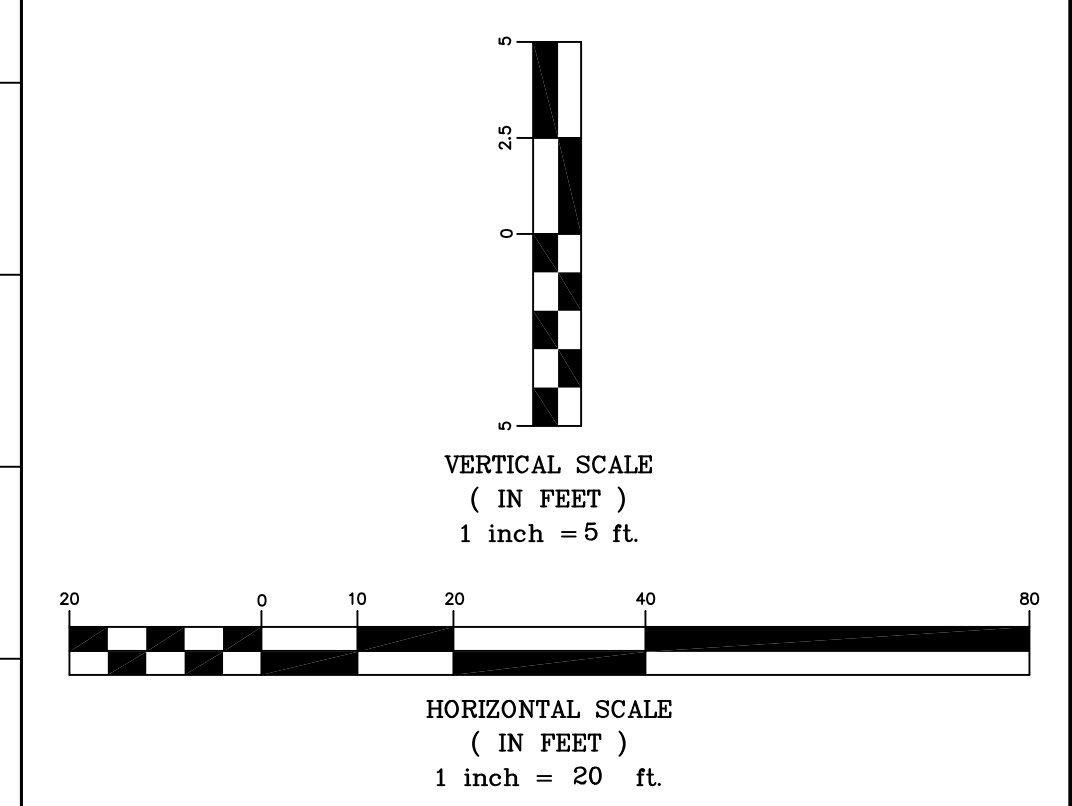


LINE 1



**AS BUILTS**  
**kemiller**  
 engineering

516 S. Market, Wichita, KS 67202 (316)264-0242



Line 1 (0+00-4+00)

	PROJECT NUMBER		
	KEM NO. 10152	FILE	DATE 02/25/2011
DESIGN KM	DRAWN NS	REVISED 03/17/2011	