

PAVING PLANS
MONARCH LANDING THIRD
PHASE 1

CAMDEN CHASE

SHEET TITLE
472-84999
PROJECT NUMBER

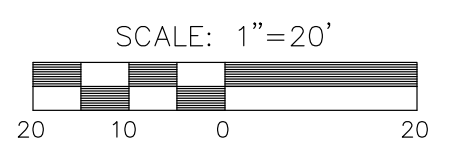
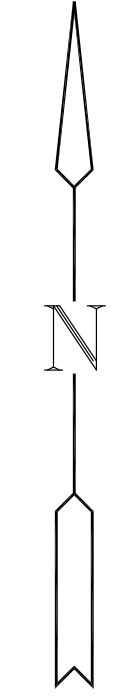
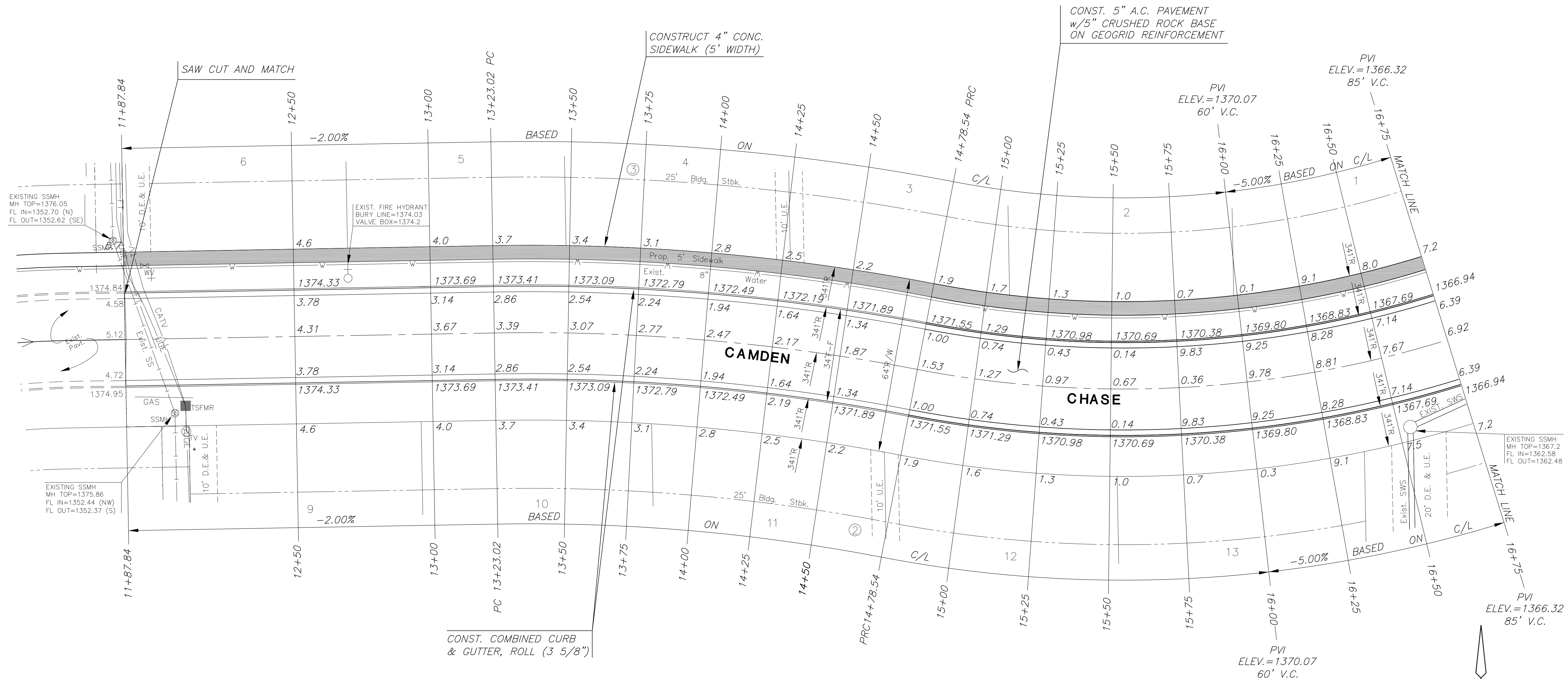
DFL / KKL / GJA
DESIGNED / DRAWN / CHECKED

ISSUED
September 2011

REVISED

SHEET NO.

9 of 23



LEGEND

✦ + STREET SIGN & SIGN LOCATION
(SEE SIGN ASSEMBLY TABLE FOR TYPE & STATION OF SIGN)

NOTE:
TOP OF CURB ELEVATIONS SHOWN ARE FOR FULL CURB. CONSTRUCT CURB AND GUTTER AS NOTED.

SUBDIVISION BENCH MARKS

NO.	STREET AND STATION	FROM CL	DESCRIPTION	ELEVATIONS
1	CAMDEN CHASE, STA. 17+16.5	14.5' RT	TOP OF CURB AT NE END OF INLET HOOKUP	
2	FLUTTER COURT, END OF CUL-DE-SAC	N/A	TOP OF CURB AT NE END OF INLET HOOKUP	

NOTE: CONTRACTOR SHALL INSTALL SUBDIVISION BENCH MARKS ("FLAT SURVEY MARKERS NO. 8134-08 3" TOP DIAMETER" PROVIDED BY KANSAS BLUE PRINT CO., INC.) COSTS TO BE CONSIDERED SUBSIDIARY TO CONSTRUCTION OF COMBINED CURB AND GUTTER.