

PAVING PLANS
MONARCH LANDING THIRD
PHASE 1

EROSION CONTROL
SHEET TITLE
472-84999
PROJECT NUMBER

DFL / MKEC / GJA
DESIGNED DRAWN CHECKED

ISSUED
September 2011
REVISED

SHEET NO.
12 of 23

- LEGEND**
- BC — BACK OF CURB PROTECTION (2479.0 LF)
 - - - 1380 - - - EXIST. CONTOUR
 - 1380 — PROP. CONTOUR
 - ▬▬▬▬▬ GRADING LIMITS
 - W - EXIST. WATER
 - S - EXIST. SAN. SEWER
 - SS - EXIST. STORM SEWER
 - UGT - EXIST. UNDERGROUND TELEPHONE
 - UGE - EXIST. UNDERGROUND ELECTRICAL
 - G - EXIST. GAS LINE
 - TV - EXIST. CABLE LINE
 - FLOW ARROW
 - ▭ PERENNIAL RYE (0.86 AC) 300 LBS/ACRE
FERTILIZE 10-20-10 @ 150 LBS/ACRE
(QUANTITIES GIVEN FOR INFORMATION ONLY)
 - CURB INLET FILTER (3)

- EROSION CONTROL NOTES**
- EROSION CONTROL IS TO MEET ALL FEDERAL, STATE, COUNTY & LOCAL CODE STANDARDS.
 - CONTRACTOR SHALL PROVIDE AND PRESERVE EROSION PROTECTION THROUGHOUT PROJECT CONSTRUCTION. THE PLAN PROVIDED HERE IS FOR FINAL PROTECTION, VARIOUS PHASES OF THIS PLAN SHALL BE IMPLEMENTED OR MODIFIED TO CONTROL EROSION. MODIFICATIONS OF THE PLAN SHALL BE APPROVED BY THE OWNER'S REPRESENTATIVE.
 - CONTRACTOR IS RESPONSIBLE FOR MAINTAINING AND IMPLEMENTING ALL EROSION CONTROL.
 - CONTRACTOR SHALL INSTALL AND MAINTAIN A STABILIZED CONSTRUCTION ENTRANCE AT A LOCATION DETERMINED BY THE ENGINEER.
 - EROSION CONTROL MAT SHALL BE NORTH AMERICAN GREEN SC-150 OR APPROVED EQUAL. INSTALL PER MANUFACTURER'S RECOMMENDATIONS.

- CRIMPING NOTES**
- ONCE TOPSOIL HAS BEEN PLACED, DISC/SCARIFY SOIL PRIOR TO SPREADING PRAIRIE HAY.
 - SPREAD PRAIRIE HAY AND IMMEDIATELY CRIMP INTO TOPSOIL WITH SUITABLE MECHANICAL EQUIPMENT.

GENERAL NOTES FOR PROJECT SEEDING

SUBMITTALS

PRODUCT DATA: FOR EACH TYPE OF PRODUCT INDICATED.

CERTIFICATION OF GRASS SEED: FROM SEED VENDOR FOR EACH GRASS-SEED MIXTURE STATING THE BOTANICAL AND COMMON NAME AND PERCENTAGE BY WEIGHT OF EACH SPECIES AND VARIETY, AND PERCENTAGE OF PURITY, GERMINATION, AND WEED SEED. INCLUDE THE YEAR OF PRODUCTION AND DATE OF PACKAGING.

PRODUCT CERTIFICATES: FOR SOIL AMENDMENTS, SIGNED BY PRODUCT MANUFACTURER.

MATERIAL TEST REPORTS: FOR EXISTING SURFACE SOIL AND IMPORTED TOPSOIL.

PLANTING SCHEDULE: INDICATING ANTICIPATED PLANTING DATES FOR SEED INSTALLATION.

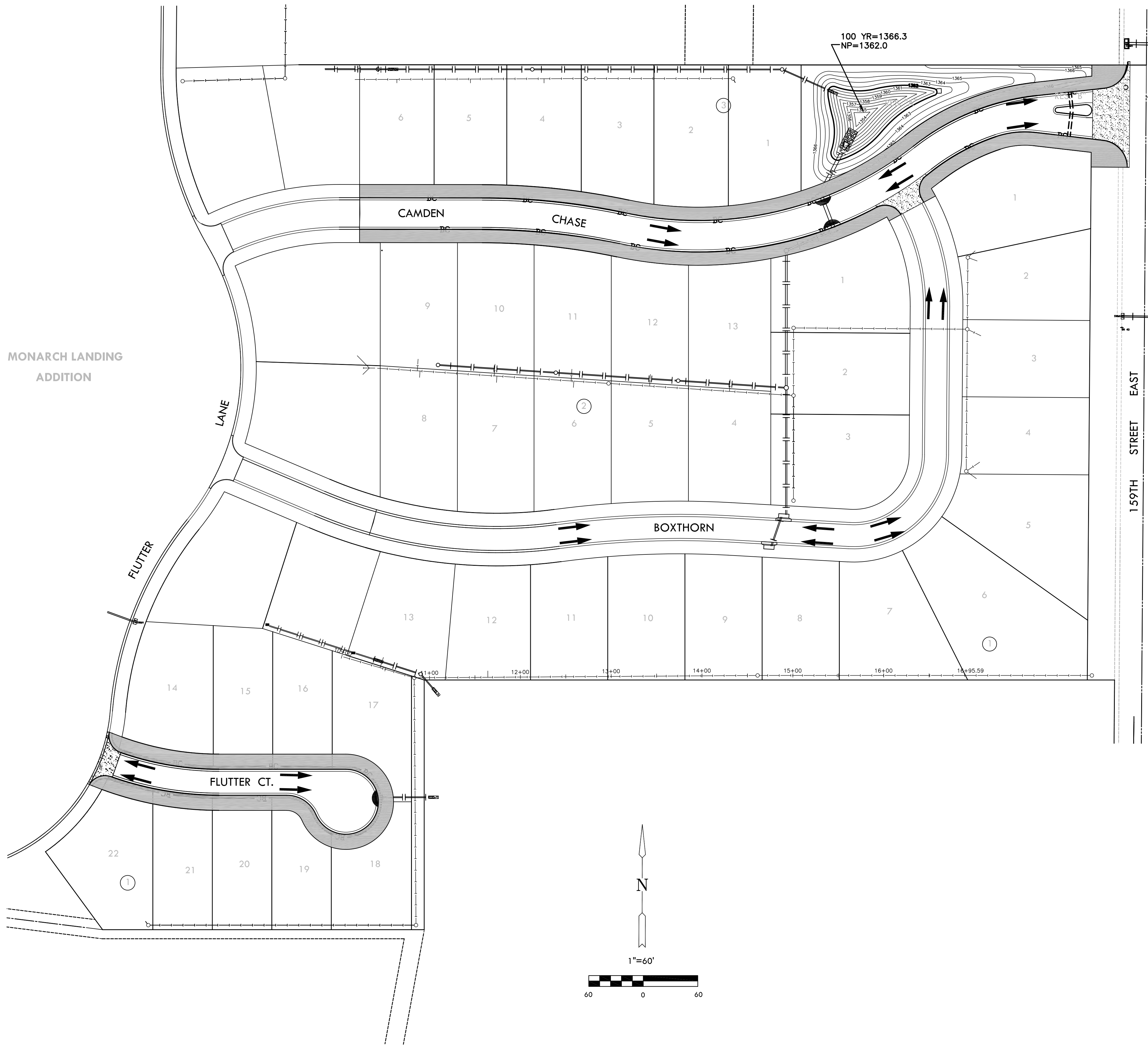
QUALITY ASSURANCE

INSTALLER QUALIFICATIONS: A QUALIFIED LANDSCAPE INSTALLER WHO'S WORK HAS RESULTED IN SUCCESSFUL NATIVE GRASS ESTABLISHMENT.

INSTALLER'S FIELD SUPERVISION: REQUIRE INSTALLER TO MAINTAIN AN EXPERIENCED SUPERVISOR ON PROJECT SITE WHEN PLANTING IS IN PROGRESS.

DELIVERY, STORAGE, AND HANDLING

SEED: DELIVER SEED IN ORIGINAL SEALED, LABELED, AND UNDAMAGED CONTAINERS.



PLOTTED: Wednesday, September 21, 2011 @ 08:47AM

J:\CIVIL\06201\DWG\PAV\THIRD_ADD\ERO_CONTROL_3_PAV.DWG