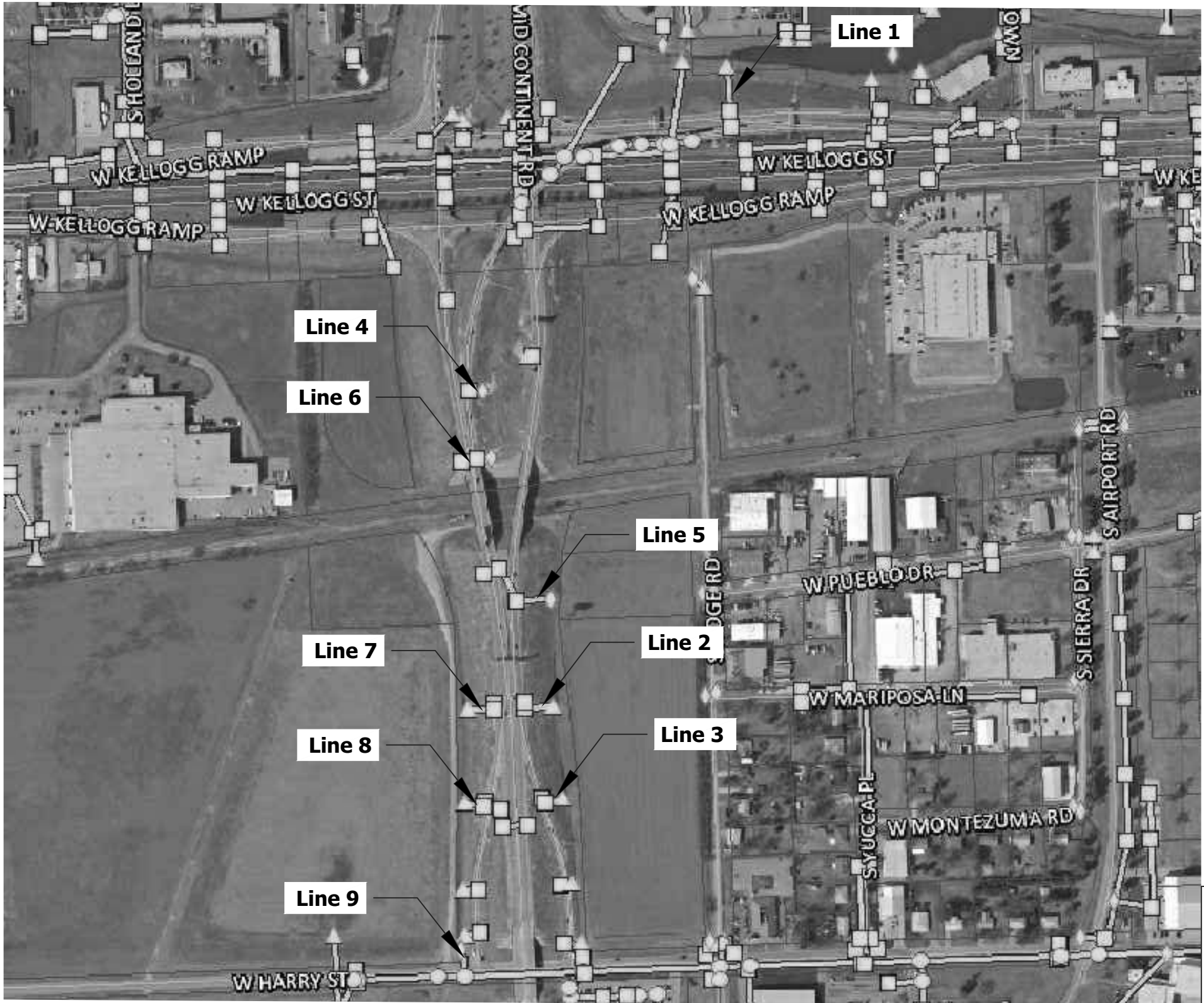
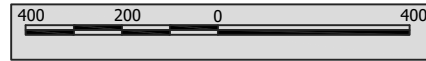


**Stormwater Sewer Improvements to Serve
S. Mid-Continent Road & W. Kellogg Dr.
Project #468-84785
OCA #133116**



S:\Engineering\Hot Spot Projects\Projects\Mid-Continent Rd SWS R&R\Mid-Continent Rd R&R SWS Lines.dwg, 9/21/2011 2:13:47 PM, 1:2



<i>SWS Rehabilitation Harry & Mid Continent Rd Title Sheet</i>		
STORMWATER ENGINEER Scott C. Lindebak, P.E.		
PROJECT # 468-84785	OCA NUMBER 133116	DATE 08/11
STORMWATER MANAGEMENT CITY HALL - EIGHTH FLOOR 455 NORTH MAIN STREET WICHITA, KANSAS 67202-1620 (316) 268-4499 (316) 656-7418 FAX	DESIGN KSF	DRAWN KSF
		SHEET 1 OF 10

S:\Engineering\Hot Spot Projects\Projects\Mid-Continent Rd SWS R&R\Mid-Continent Rd R&R SWS Lines.dwg, 9/22/2011 3:53:52 PM, 1:2

Line 1: 5046-0315 to 5046-0317
West Kellogg Dr and Mid-Continent Rd, Remove and Replace Existing 15" Corrugated Metal Pipe with 15" PVC Pipe

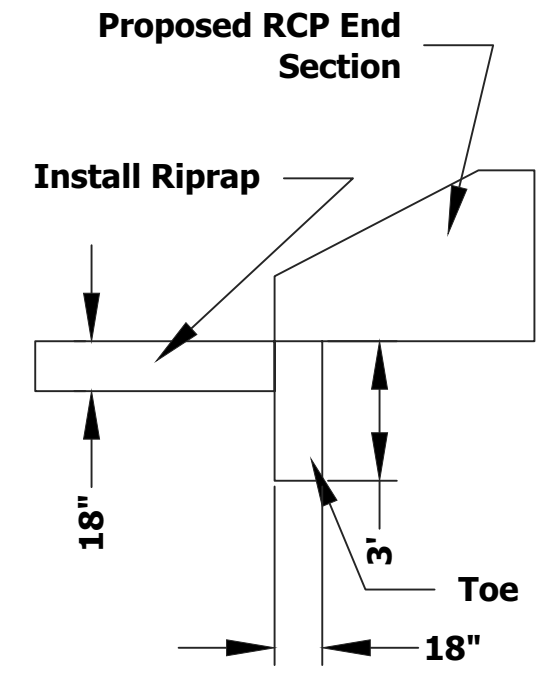
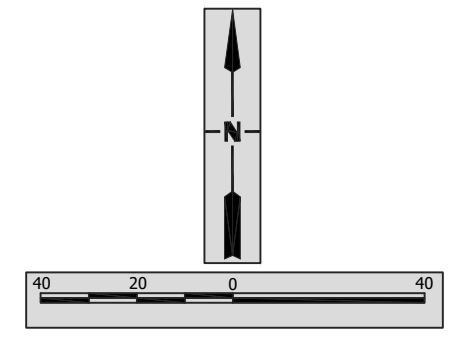
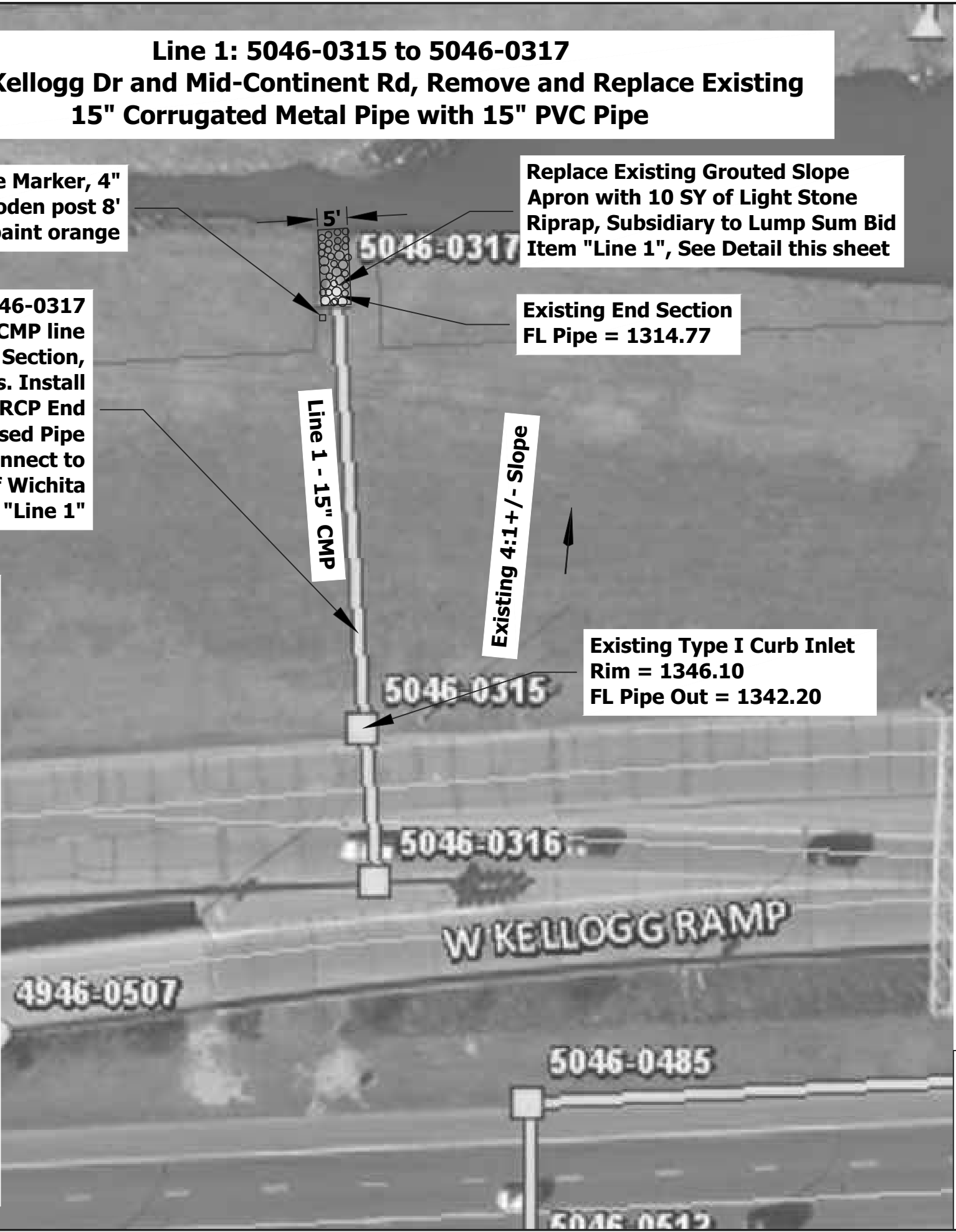
Place End of Pipe Marker, 4" dia. treated wooden post 8' long, bury 3' and paint orange

Replace Existing Grouted Slope Apron with 10 SY of Light Stone Riprap, Subsidiary to Lump Sum Bid Item "Line 1", See Detail this sheet

Line 1: 5046-0315 to 5046-0317
Remove and Replace 147 +/- LF of Existing 15" CMP line with 147 +/- LF 15" PVC pipe and 15" RCP End Section, install per City of Wichita Standard Specifications. Install Concrete Collar and grout watertight to Pipe. RCP End Section shall not exceed 2% grade. Proposed Pipe Flowlines shall match Existing Pipe Flowlines. Connect to Existing Structures per Standard City of Wichita Specifications, paid for as Lump Sum Bid Item "Line 1"

Existing End Section FL Pipe = 1314.77

- Notes:**
- Contractor will field verify existing pipe locations horizontally and vertically, pipe material and length, and any existing utility locations prior to construction.
 - Contractor will seed and mulch all disturbed areas to City of Wichita Standard Specifications, and cover all disturbed areas with NA SC 150 erosion control blanket or equivalent on slopes greater than 6:1. Seeding and mulching and erosion control blanket will be paid for as incidental to Lump Sum Bid Item "Line 1".
 - All work incidental to complete the pipe removal and replacement including connections to existing structures, adding pipe bends, concrete collars, grout, riprap, regrading, removing excess sand and replacing with topsoil, and placing and painting marker posts shall be paid for as Lump Sum Bid Item "Line 1".
 - Traffic Control - Kellogg Avenue, South Mid Continent Drive, Harry Street and adjacent streets shall not be closed to through traffic. If necessary, only one lane of traffic will be allowed temporarily closed, and this work will be in compliance with the "Manual of Uniform Traffic Control Devices", and approved by the Engineer prior to traffic control set up. This work will be subsidiary to Lump Sum Bid Item "Line 1".
 - The 15" PVC pipe material shall be Contech Polyvinyl Chloride TRUSS pipe or equivalent approved by the City of Wichita Stormwater Engineer.

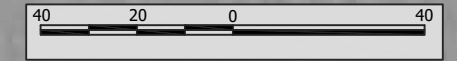


Proposed RCP End Section Detail
Not to Scale

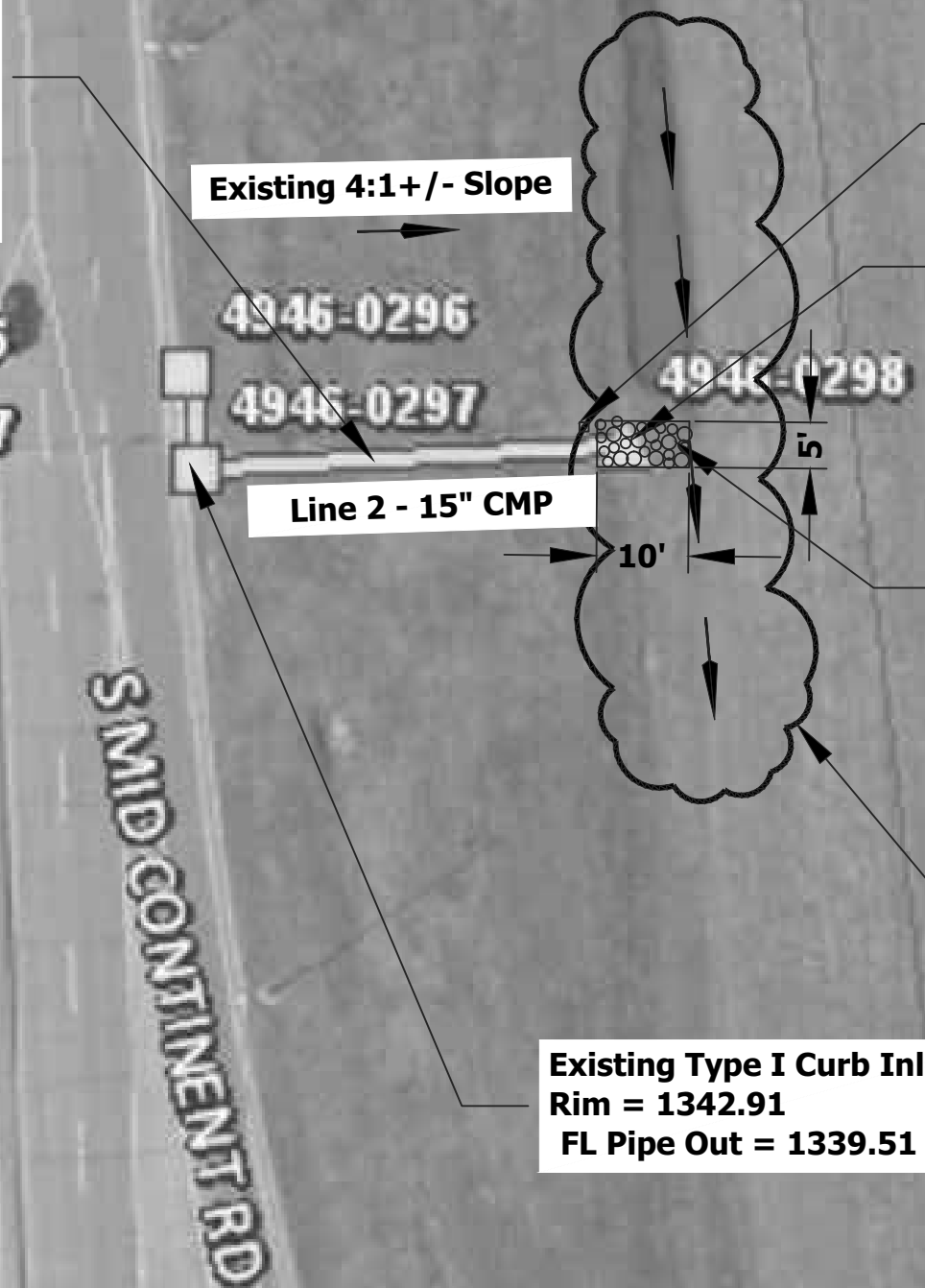


SWS Rehabilitation West Kellogg Dr Line 1		
STORMWATER ENGINEER Scott C. Lindebak, P.E.		
PROJECT # 468-84785	OCA NUMBER 133116	DATE 08/11
STORMWATER MANAGEMENT CITY HALL - EIGHTH FLOOR 455 NORTH MAIN STREET WICHITA, KANSAS 67202-1620 (316) 268-4499 (316) 658-7418 FAX		DESIGN KSF
		DRAWN KSF
		SHEET 2 OF 10

**Line 2: 4946-0297 to 4946-0298
West Harry and South Mid Continent Rd, Remove and Replace
Existing 15" Corrugated Metal Pipe with 15" PVC Pipe**



Line 2: 4946-0297 to 4946-0298
Remove and Replace 93+/- LF of Existing 15" CMP with 93+/- LF 15" PVC pipe and 15" RCP End Section, install per City of Wichita Standard Specifications. Install Concrete Collar and grout watertight to Pipe. RCP End Section shall not exceed 2% grade. Proposed Pipe Flowlines shall match Existing Pipe Flowlines. Connect to Existing Structures per Standard City of Wichita Specifications, paid for as Lump Sum Bid Item "Line 2"



Place End of Pipe Marker, 4" dia. treated wooden post 8' long, bury 3' and paint orange

**Existing End Section
FL Pipe = 1321.23**

**Install 6 SY of 6x9 Riprap,
See Detail on Sheet 2**

**Remove Excess Sand and
Replace with Topsoil,
Regrade Ditch to Drain**

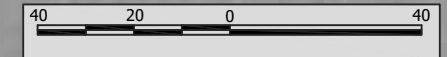
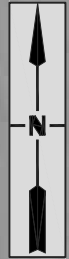
**Existing Type I Curb Inlet
Rim = 1342.91
FL Pipe Out = 1339.51**

- Notes:**
1. Contractor will field verify existing pipe locations horizontally and vertically, pipe material and length, and any existing utility locations prior to construction.
 2. Contractor will seed and mulch all disturbed areas to City of Wichita Standard Specifications, and cover all disturbed areas with NA SC 150 erosion control blanket or equivalent on slopes greater than 6:1. Seeding and mulching and erosion control blanket will be paid for as incidental to Lump Sum Bid Item "Line 2".
 3. All work incidental to complete the pipe removal and replacement including connections to existing structures, adding pipe bends, concrete collars, grout, riprap, regrading, removing excess sand and replacing with topsoil, and placing and painting marker posts shall be paid for as Lump Sum Bid Item "Line 2".
 4. Traffic Control - Kellogg Avenue, South Mid Continent Drive, Harry Street and adjacent streets shall not be closed to through traffic. If necessary, only one lane of traffic will be allowed temporarily closed, and this work will be in compliance with the "Manual of Uniform Traffic Control Devices", and approved by the Engineer prior to traffic control set up. This work will be subsidiary to Lump Sum Bid Item "Line 2".
 5. The 15" PVC pipe material shall be Contech Polyvinyl Chloride TRUSS pipe or equivalent approved by the City of Wichita Stormwater Engineer.

S:\Engineering\Hot Spot Projects\Projects\Mid-Continent Rd SWS R&R\Mid-Continent Rd R&R SWS Lines.dwg, 9/22/2011 3:56:37 PM, 1:2

		SWS Rehabilitation Harry & Mid Continent Rd Line 2	
		Stormwater Engineer Scott C. Lindebak, P.E.	
PROJECT # 468-84785	OCA NUMBER 133116	DATE 08/11	
STORMWATER MANAGEMENT CITY HALL - EIGHTH FLOOR 455 NORTH MAIN STREET WICHITA, KANSAS 67202-1620 (316) 268-4492 (316) 858-7418 FAX		DESIGN KSF	DRAWN KSF
		SHEET 3 OF 10	

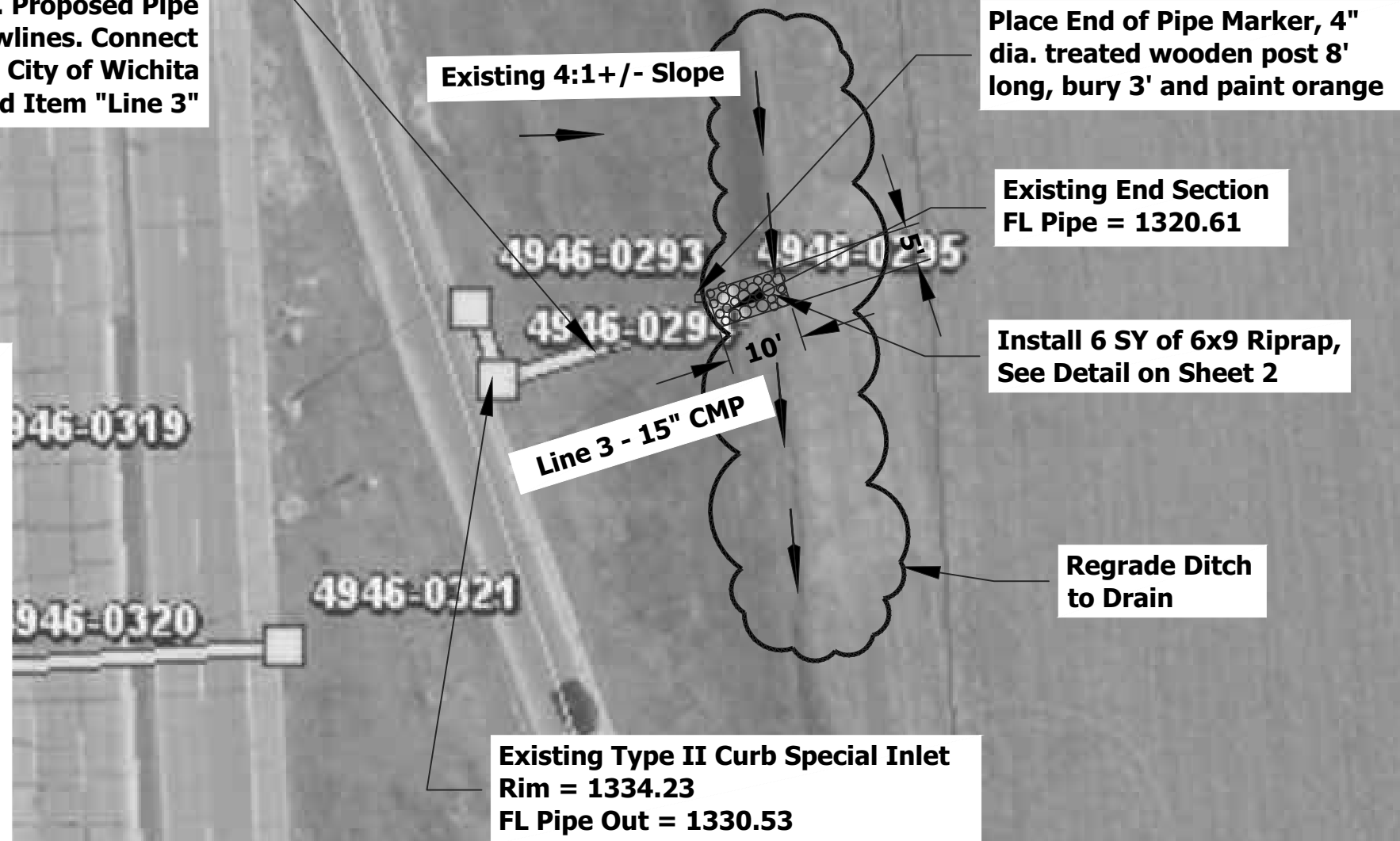
**Line 3: 4946-0294 to 4946-0295
West Harry and South Mid Continent Rd, Remove and Replace
Existing 15" Corrugated Metal Pipe with 15" PVC Pipe**



**Line 3: 4946-0294 to 4946-0295
Remove and Replace 63+/- LF of Existing 15" CMP with
63+/- LF 15" PVC pipe and 15" RCP End Section, install
per City of Wichita Standard Specifications. Install
Concrete Collar and grout watertight to Pipe. RCP End
Section shall not exceed 2% grade. Proposed Pipe
Flowlines shall match Existing Pipe Flowlines. Connect
to Existing Structures per Standard City of Wichita
Specifications, paid for as Lump Sum Bid Item "Line 3"**

Notes:

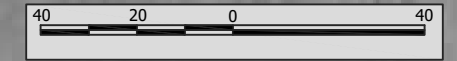
1. Contractor will field verify existing pipe locations horizontally and vertically, pipe material and length, and any existing utility locations prior to construction.
2. Contractor will seed and mulch all disturbed areas to City of Wichita Standard Specifications, and cover all disturbed areas with NA SC 150 erosion control blanket or equivalent on slopes greater than 6:1. Seeding and mulching and erosion control blanket will be paid for as incidental to Lump Sum Bid Item "Line 3".
3. All work incidental to complete the pipe removal and replacement including connections to existing structures, adding pipe bends, concrete collars, grout, riprap, regrading, removing excess sand and replacing with topsoil, and placing and painting marker posts shall be paid for as Lump Sum Bid Item "Line 3".
4. Traffic Control - Kellogg Avenue, South Mid Continent Drive, Harry Street and adjacent streets shall not be closed to through traffic. If necessary, only one lane of traffic will be allowed temporarily closed, and this work will be in compliance with the "Manual of Uniform Traffic Control Devices", and approved by the Engineer prior to traffic control set up. This work will be subsidiary to Lum Sum Bid Item "Line 3".
5. The 15" PVC pipe material shall be Contech Polyvinyl Chloride TRUSS pipe or equivalent approved by the City of Wichita Stormwater Engineer.



S:\Engineering\Hot Spot Projects\Projects\Mid-Continent Rd SWS R&R\Mid-Continent Rd R&R SWS Lines.dwg, 9/22/2011 3:58:26 PM, 1:2

	SWS Rehabilitation Harry & Mid Continent Rd Line 3		
	STORMWATER ENGINEER Scott C. Lindebak, P.E.		
	PROJECT # 468-84785	OCA NUMBER 133116	DATE 08/11
	STORMWATER MANAGEMENT CITY HALL - EIGHTH FLOOR 455 NORTH MAIN STREET WICHITA, KANSAS 67202-1620 (316) 268-4492 (316) 658-7418 FAX		DESIGN KSF
			SHEET 4 OF 10

Line 4: 4946-0309 to 4946-0310
West Harry and South Mid Continent Rd, Remove and Replace
Existing 15" Corrugated Metal Pipe with 15" PVC Pipe



Line 4: 4946-0309 to 4946-0310
 Remove and Replace 46+/- LF of Existing 15" CMP with 46+/- LF 15" PVC pipe and 15" RCP End Section, install per City of Wichita Standard Specifications. Install Concrete Collar and grout watertight to Pipe. RCP End Section shall not exceed 2% grade. Proposed Pipe Flowlines shall match Existing Pipe Flowlines. Connect to Existing Structures per Standard City of Wichita Specifications, paid for as Lump Sum Bid Item "Line 4"

Existing Type II Curb Special Inlet
 Rim = 1360.18
 FL Pipe Out = 1356.29

- Notes:**
1. Contractor will field verify existing pipe locations horizontally and vertically, pipe material and length, and any existing utility locations prior to construction.
 2. Contractor will seed and mulch all disturbed areas to City of Wichita Standard Specifications, and cover all disturbed areas with NA SC 150 erosion control blanket or equivalent on slopes greater than 6:1. Seeding and mulching and erosion control blanket will be paid for as incidental to Lump Sum Bid Item "Line 4".
 3. All work incidental to complete the pipe removal and replacement including connections to existing structures, adding pipe bends, concrete collars, grout, riprap, regrading, removing excess sand and replacing with topsoil, and placing and painting marker posts shall be paid for as Lump Sum Bid Item "Line 4".
 4. Traffic Control - Kellogg Avenue, South Mid Continent Drive, Harry Street and adjacent streets shall not be closed to through traffic. If necessary, only one lane of traffic will be allowed temporarily closed, and this work will be in compliance with the "Manual of Uniform Traffic Control Devices", and approved by the Engineer prior to traffic control set up. This work will be subsidiary to Lum Sum Bid Item "Line 4".
 5. The 15" PVC pipe material shall be Contech Polyvinyl Chloride TRUSS pipe or equivalent approved by the City of Wichita Stormwater Engineer.

Existing 4:1+/- Slope

Line 4 - 15" CMP

Remove Excess Sand and Replace with Topsoil, Regrade to Drain

Install 6 SY of 6x9 Riprap, See Detail on Sheet 2

Existing Pipe End
 FL Pipe = 1346.64

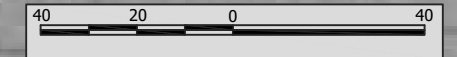
Place End of Pipe Marker, 4" dia. treated wooden post 8' long, bury 3' and paint orange



S:\Engineering\Hot Spot Projects\Projects\Mid-Continent Rd SWS R&R\Mid-Continent Rd R&R SWS Lines.dwg, 9/22/2011 4:02:15 PM, 1:2

		SWS Rehabilitation Harry & Mid Continent Rd Line 4	
		Stormwater Engineer Scott C. Lindebak, P.E.	
PROJECT # 468-84785	OCA NUMBER 133116	DATE 08/11	
STORMWATER MANAGEMENT CITY HALL - EIGHTH FLOOR 455 NORTH MAIN STREET WICHITA, KANSAS 67202-1620 (316) 268-4499 (316) 658-7418 FAX		DESIGN KSF	DRAWN KSF
		SHEET	5 OF 10

**Line 5: 4946-0299 to 4946-0300
West Harry and South Mid Continent Rd, Remove and Replace
Existing 15" Corrugated Metal Pipe with 15" PVC Pipe**



Line 5: 4946-0299 to 4946-0300
Remove and Replace 115+/- LF of Existing 15" CMP with 115+/- LF 15" PVC pipe and 15" RCP End Section, install per City of Wichita Standard Specifications. Install Concrete Collar and grout watertight to Pipe. RCP End Section shall not exceed 2% grade. Proposed Pipe Flowlines shall match Existing Pipe Flowlines. Connect to Existing Structures per Standard City of Wichita Specifications, paid for as Lump Sum Bid Item "Line 5"

Existing Type I Curb Inlet
Rim = 1348.99
FL Pipe Out = 1345.46

Install 6 SY of 6x9 Riprap, See Detail on Sheet 2

- Notes:**
1. Contractor will field verify existing pipe locations horizontally and vertically, pipe material and length, and any existing utility locations prior to construction.
 2. Contractor will seed and mulch all disturbed areas to City of Wichita Standard Specifications, and cover all disturbed areas with NA SC 150 erosion control blanket or equivalent on slopes greater than 6:1. Seeding and mulching and erosion control blanket will be paid for as incidental to Lump Sum Bid Item "Line 5".
 3. All work incidental to complete the pipe removal and replacement including connections to existing structures, adding pipe bends, concrete collars, grout, riprap, regrading, removing excess sand and replacing with topsoil, and placing and painting marker posts shall be paid for as Lump Sum Bid Item "Line 5".
 4. Traffic Control - Kellogg Avenue, South Mid Continent Drive, Harry Street and adjacent streets shall not be closed to through traffic. If necessary, only one lane of traffic will be allowed temporarily closed, and this work will be in compliance with the "Manual of Uniform Traffic Control Devices", and approved by the Engineer prior to traffic control set up. This work will be subsidiary to Lump Sum Bid Item "Line 5".
 5. The 15" PVC pipe material shall be Contech Polyvinyl Chloride TRUSS pipe or equivalent approved by the City of Wichita Stormwater Engineer.

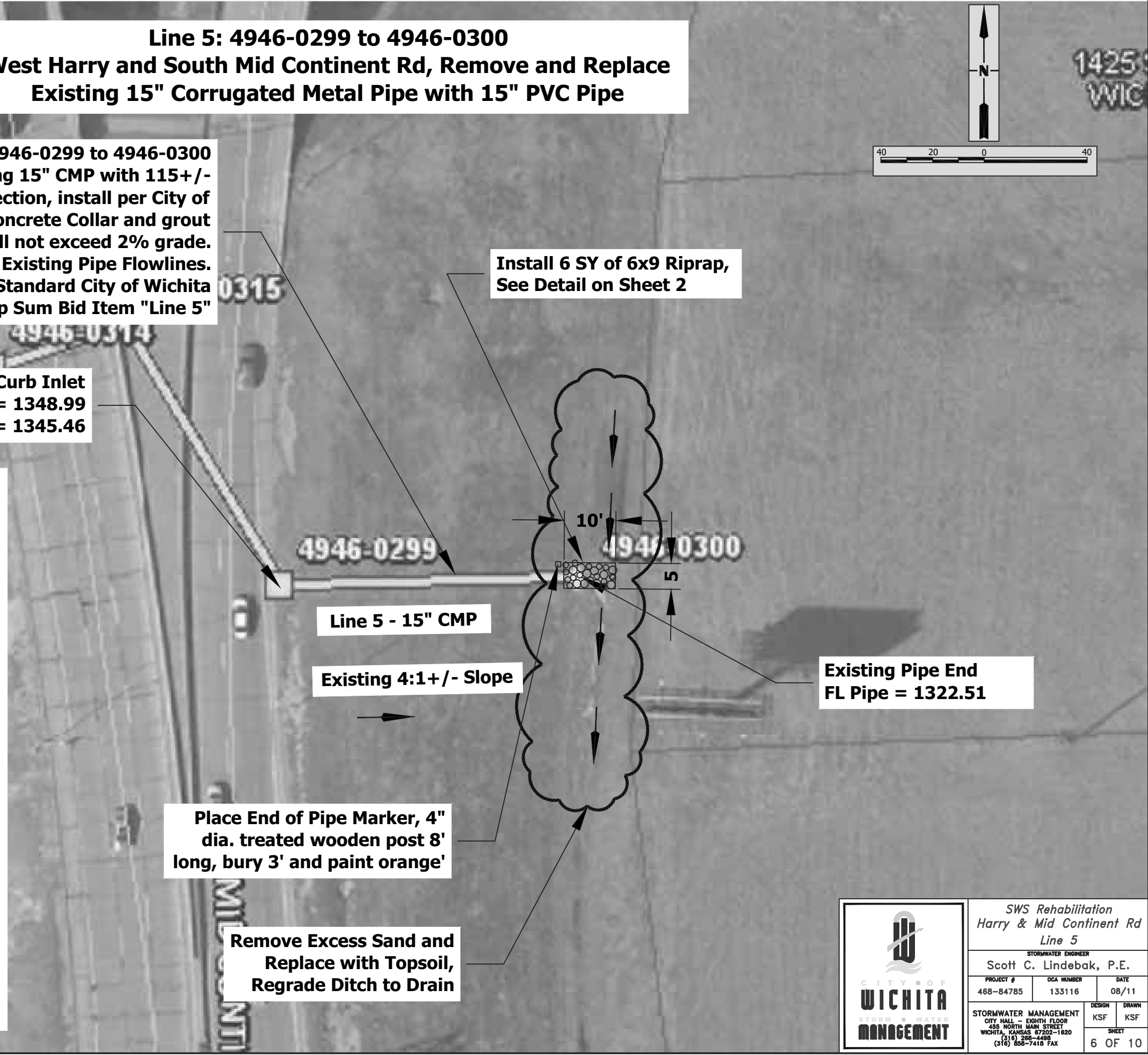
Place End of Pipe Marker, 4" dia. treated wooden post 8' long, bury 3' and paint orange'

Remove Excess Sand and Replace with Topsoil, Regrade Ditch to Drain

Existing Pipe End FL Pipe = 1322.51

Line 5 - 15" CMP

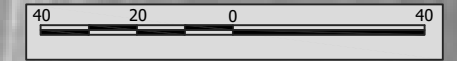
Existing 4:1 +/- Slope



S:\Engineering\Hot Spot Projects\Projects\Mid-Continent Rd SWS R&R\Mid-Continent Rd R&R SWS Lines.dwg, 9/22/2011 4:04:23 PM, 1:2

		SWS Rehabilitation Harry & Mid Continent Rd Line 5	
		Scott C. Lindebak, P.E.	
PROJECT #	OCA NUMBER	DATE	
468-84785	133116	08/11	
STORMWATER MANAGEMENT CITY HALL - EIGHTH FLOOR 455 NORTH MAIN STREET WICHITA, KANSAS 67202-1620 (316) 268-4492 (316) 658-7418 FAX		DESIGN	DRAWN
		KSF	KSF
			SHEET
			6 OF 10

**Line 6: 4946-0312 to 4946-0313
West Harry and South Mid Continent Rd, Remove and Replace
Existing 15" Corrugated Metal Pipe with 15" PVC Pipe**



**Existing Type II Curb Inlet
Rim = 1356.48
FL Pipe Out = 1352.77**

**Line 6: 4946-0312 to 4946-0313
Remove and Replace 44 +/- LF of Existing 15" CMP with 44 +/-
LF of 15" PVC pipe and 15" RCP End Section, install per City of
Wichita Standard Specifications. Install Concrete Collar and
grout watertight to Pipe. RCP End Section shall not exceed 2%
grade. Proposed Pipe Flowlines shall match Existing Pipe
Flowlines. Connect to Existing Structures per Standard City of
Wichita Specifications, paid for as Lump Sum Bid Item "Line 6"**

**Place End of Pipe Marker, 4"
dia. treated wooden post 8'
long, bury 3' and paint orange**

Existing 4:1 +/- Slope

**Remove Excess Sand and
Replace with Topsoil,
Regrade to Drain**

**Install 6 SY 6x9 Riprap,
See Detail on Sheet 2**

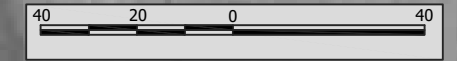
**Existing Pipe End
Pipe FL = 1348.22**

- Notes:**
1. Contractor will field verify existing pipe locations horizontally and vertically, pipe material and length, and any existing utility locations prior to construction.
 2. Contractor will seed and mulch all disturbed areas to City of Wichita Standard Specifications, and cover all disturbed areas with NA SC 150 erosion control blanket or equivalent on slopes greater than 6:1. Seeding and mulching and erosion control blanket will be paid for as incidental to Lump Sum Bid Item "Line 6".
 3. All work incidental to complete the pipe removal and replacement including connections to existing structures, adding pipe bends, concrete collars, grout, riprap, regrading, removing excess sand and replacing with topsoil, and placing and painting marker posts shall be paid for as Lump Sum Bid Item "Line 6".
 4. Traffic Control - Kellogg Avenue, South Mid Continent Drive, Harry Street and adjacent streets shall not be closed to through traffic. If necessary, only one lane of traffic will be allowed temporarily closed, and this work will be in compliance with the "Manual of Uniform Traffic Control Devices", and approved by the Engineer prior to traffic control set up. This work will be subsidiary to Lump Sum Bid Item "Line 6".
 5. The 15" PVC pipe material shall be Contech Polyvinyl Chloride TRUSS pipe or equivalent approved by the City of Wichita Stormwater Engineer.

S:\Engineering\Hot Spot Projects\Projects\Mid-Continent Rd SWS R&R\Mid-Continent Rd R&R SWS Lines.dwg, 9/22/2011 4:07:15 PM, 1:2

				SWS Rehabilitation Harry & Mid Continent Rd Line 6	
				Stormwater Engineer Scott C. Lindebak, P.E.	
PROJECT #	OCA NUMBER	DATE			
468-84785	133116	08/11			
STORMWATER MANAGEMENT CITY HALL - EIGHTH FLOOR 455 NORTH MAIN STREET WICHITA, KANSAS 67202-1620 (316) 268-4499 (316) 658-7418 FAX			DESIGN	DRAWN	
			KSF	KSF	
					SHEET
					7 OF 10

**Line 7: 4946-0317 to 4946-0318
West Harry and South Mid Continent Rd, Remove and Replace
Existing 15" Corrugated Metal Pipe with 15" PVC Pipe**



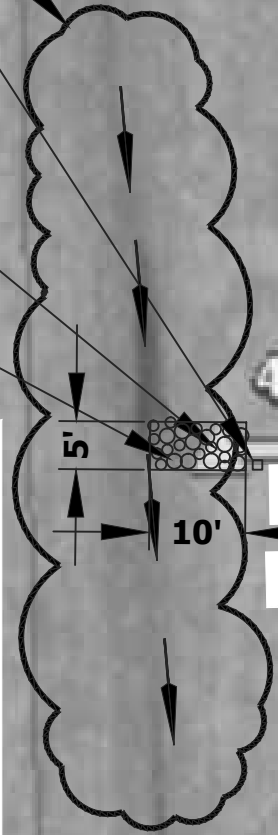
**Regrade Ditch
to Drain**

**Place End of Pipe Marker, 4"
dia. treated wooden post 8'
long, bury 3' and paint orange**

**Existing Pipe End
FL Pipe = 1322.79**

**Install 6 SY of 6x9 Riprap,
See Detail on Sheet 2**

**Line 7: 4946-0317 to 4946-0318
Remove and Replace 87+/- LF of Existing 15" CMP with 87+/-
LF 15" PVC pipe and 15" RCP End Section, install per City of
Wichita Standard Specifications. Install Concrete Collar and
grout watertight to Pipe. RCP End Section shall not exceed 2%
grade. Proposed Pipe Flowlines shall match Existing Pipe
Flowlines. Connect to Existing Structures per Standard City of
Wichita Specifications, paid for as Lump Sum Bid Item "Line 7"**



Line 7 - 15" CMP

Existing 4:1 +/- Slope

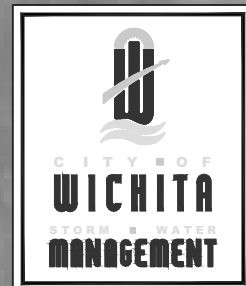
**Existing Type I Curb Inlet
Rim = 1342.83
FL Pipe Out = 1339.08**

Notes:

1. Contractor will field verify existing pipe locations horizontally and vertically, pipe material and length, and any existing utility locations prior to construction.
2. Contractor will seed and mulch all disturbed areas to City of Wichita Standard Specifications, and cover all disturbed areas with NA SC 150 erosion control blanket or equivalent on slopes greater than 6:1. Seeding and mulching and erosion control blanket will be paid for as incidental to Lump Sum Bid Item "Line 7".
3. All work incidental to complete the pipe removal and replacement including connections to existing structures, adding pipe bends, concrete collars, grout, riprap, regrading, removing excess sand and replacing with topsoil, and placing and painting marker posts shall be paid for as Lump Sum Bid Item "Line 7".
4. Traffic Control - Kellogg Avenue, South Mid Continent Drive, Harry Street and adjacent streets shall not be closed to through traffic. If necessary, only one lane of traffic will be allowed temporarily closed, and this work will be in compliance with the "Manual of Uniform Traffic Control Devices", and approved by the Engineer prior to traffic control set up. This work will be subsidiary to Lump Sum Bid Item "Line 7".
5. The 15" PVC pipe material shall be Contech Polyvinyl Chloride TRUSS pipe or equivalent approved by the City of Wichita Stormwater Engineer.

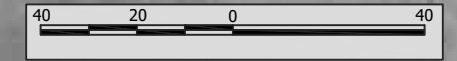
S:\Engineering\Hot Spot Projects\Projects\Mid-Continent Rd SWS R&R\Mid-Continent Rd R&R SWS Lines.dwg, 9/22/2011 4:08:46 PM, 1:2

S MID CONTINENT RD



SWS Rehabilitation Harry & Mid Continent Rd Line 7		
STORMWATER ENGINEER Scott C. Lindebak, P.E.		
PROJECT # 468-84785	OCA NUMBER 133116	DATE 08/11
STORMWATER MANAGEMENT CITY HALL - EIGHTH FLOOR 455 NORTH MAIN STREET WICHITA, KANSAS 67202-1620 (316) 268-4492 (316) 658-7418 FAX		DESIGN KSF
		DRAWN KSF
		SHEET 8 OF 10

**Line 8: 4946-0322 to 4946-0324
West Harry and South Mid Continent Rd, Remove and Replace
Existing 15" Corrugated Metal Pipe with 15" PVC Pipe**



**Regrade Ditch
to Drain**

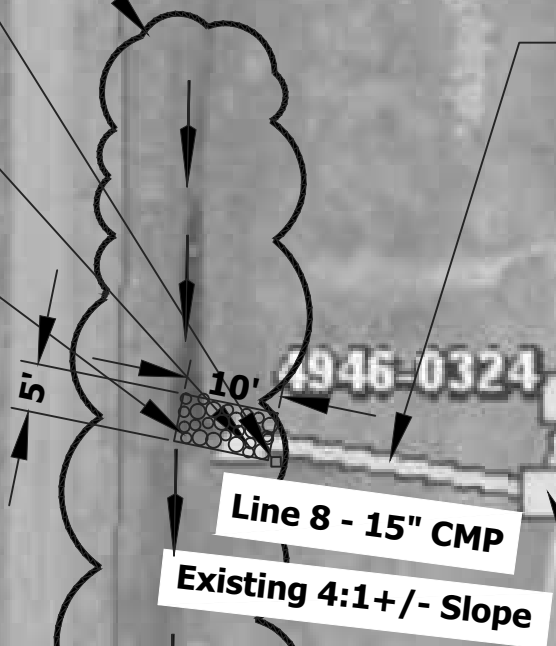
**Place End of Pipe Marker, 4"
dia. treated wooden post 8'
long, bury 3' and paint orange**

**Existing Pipe End
FL Pipe = 1318.44**

**Install 6 SY of 6x9 Riprap,
See Detail on Sheet 2**

**Line 8: 4946-0322 to 4946-0324
Remove and Replace 65+/- LF of Existing 15" CMP with
65+/- LF of 15" PVC pipe and 15" RCP End Section, install
per City of Wichita Standard Specifications. Install
Concrete Collar and grout watertight to Pipe. RCP End
Section shall not exceed 2% grade. Proposed Pipe
Flowlines shall match Existing Pipe Flowlines. Connect to
Existing Structures per Standard City of Wichita
Specifications, paid for as Lump Sum Bid Item "Line 8"**

- Notes:**
1. Contractor will field verify existing pipe locations horizontally and vertically, pipe material and length, and any existing utility locations prior to construction.
 2. Contractor will seed and mulch all disturbed areas to City of Wichita Standard Specifications, and cover all disturbed areas with NA SC 150 erosion control blanket or equivalent on slopes greater than 6:1. Seeding and mulching and erosion control blanket will be paid for as incidental to Lump Sum Bid Item "Line 8".
 3. All work incidental to complete the pipe removal and replacement including connections to existing structures, adding pipe bends, concrete collars, grout, riprap, regrading, removing excess sand and replacing with topsoil, and placing and painting marker posts shall be paid for as Lump Sum Bid Item "Line 8".
 4. Traffic Control - Kellogg Avenue, South Mid Continent Drive, Harry Street and adjacent streets shall not be closed to through traffic. If necessary, only one lane of traffic will be allowed temporarily closed, and this work will be in compliance with the "Manual of Uniform Traffic Control Devices", and approved by the Engineer prior to traffic control set up. This work will be subsidiary to Lump Sum Bid Item "Line 8".
 5. The 15" PVC pipe material shall be Contech Polyvinyl Chloride TRUSS pipe or equivalent approved by the City of Wichita Stormwater Engineer.



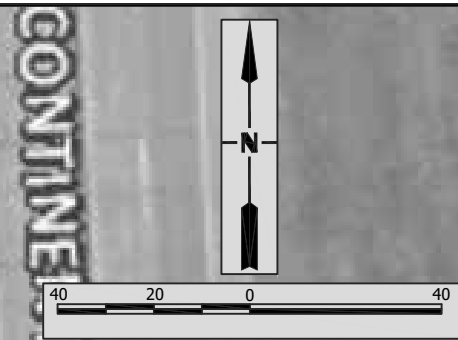
**Existing Type II Special Curb Inlet
Rim = 1334.97
Pipe FL Out = 1330.42**

S:\Engineering\Hot Spot Projects\Projects\Mid-Continent Rd SWS R&R\Mid-Continent Rd R&R SWS Lines.dwg, 9/22/2011 4:16:29 PM, 1:2

				SWS Rehabilitation Harry & Mid Continent Rd Line 8	
				Scott C. Lindebak, P.E. STORMWATER ENGINEER	
PROJECT #	OCA NUMBER	DATE			
468-84785	133116	08/11			
STORMWATER MANAGEMENT CITY HALL - EIGHTH FLOOR 455 NORTH MAIN STREET WICHITA, KANSAS 67202-1620 (316) 268-4492 (316) 658-7418 FAX			DESIGN	DRAWN	
			KSF	KSF	
			SHEET		
			9 OF 10		

S:\Engineering\Hot Spot Projects\Projects\Mid-Continent Rd SWS R&R\Mid-Continent Rd R&R SWS Lines.dwg, 9/22/2011 4:17:40 PM, 1:2

Line 9: 4946-0329 to 4945-0021
West Harry and South Mid Continent Rd, Remove and Replace
Existing 18" Corrugated Metal Pipe with 18" Reinforced Concrete Pipe



Place End of Pipe Marker, 4" dia. treated wooden post 8' long, bury 3' and paint orange

Install 10 SY of Light Stone Riprap, See Detail on Sheet 2

Line 9: 4946-0329 to 4945-0021
Remove and Replace 90+/- LF of Existing 18" CMP with 90+/- LF of 18" RCP and 18" RCP End Section, install per City of Wichita Standard Specifications. Install Concrete Collar and grout watertight to Pipe. RCP End Section shall not exceed 2% grade. Proposed Pipe Flowlines shall match Existing Pipe Flowlines. Connect to Existing Structures per Standard City of Wichita Specifications, paid for as Lump Sum Bid Item "Line 9"

- Notes:**
1. Contractor will field verify existing pipe locations horizontally and vertically, pipe material and length, and any existing utility locations prior to construction.
 2. Contractor will seed and mulch all disturbed areas to City of Wichita Standard Specifications, and cover all disturbed areas with NA SC 150 erosion control blanket or equivalent on slopes greater than 6:1. Seeding and mulching and erosion control blanket will be paid for as incidental to Lump Sum Bid Item "Line 9".
 3. All work incidental to complete the pipe removal and replacement including connections to existing structures, adding pipe bends, concrete collars, grout, riprap, regrading, removing excess sand and replacing with topsoil, and placing and painting marker posts shall be paid for as Lump Sum Bid Item "Line 9".
 4. Traffic Control - Kellogg Avenue, South Mid Continent Drive, Harry Street and adjacent streets shall not be closed to through traffic. If necessary, only one lane of traffic will be allowed temporarily closed, and this work will be in compliance with the "Manual of Uniform Traffic Control Devices", and approved by the Engineer prior to any traffic control set up. Flagpersons, message boards, and any additional items needed for this location's traffic control will be subsidiary to Lump Sum Bid Item "Line 9".



Existing Pipe End
 FL = 1314.23

Circular MH
 FL = 1316.22

Remove and Replace Concrete Pavement to the nearest joint as necessary for Construction per City of Wichita Specifications. This cost will be Incidental to Lump Sum Bid Item "Line 9".

				SWS Rehabilitation Harry & Mid Continent Rd Line 9	
				Scott C. Lindebak, P.E. STORMWATER ENGINEER	
PROJECT #	OCA NUMBER	DATE			
468-84785	133116	08/11			
STORMWATER MANAGEMENT CITY HALL - EIGHTH FLOOR 455 NORTH MAIN STREET WICHITA, KANSAS 67202-1620 (316) 268-4492 (316) 658-7418 FAX			DESIGN	DRAWN	
			KSF	KSF	
					SHEET
					10 OF 10