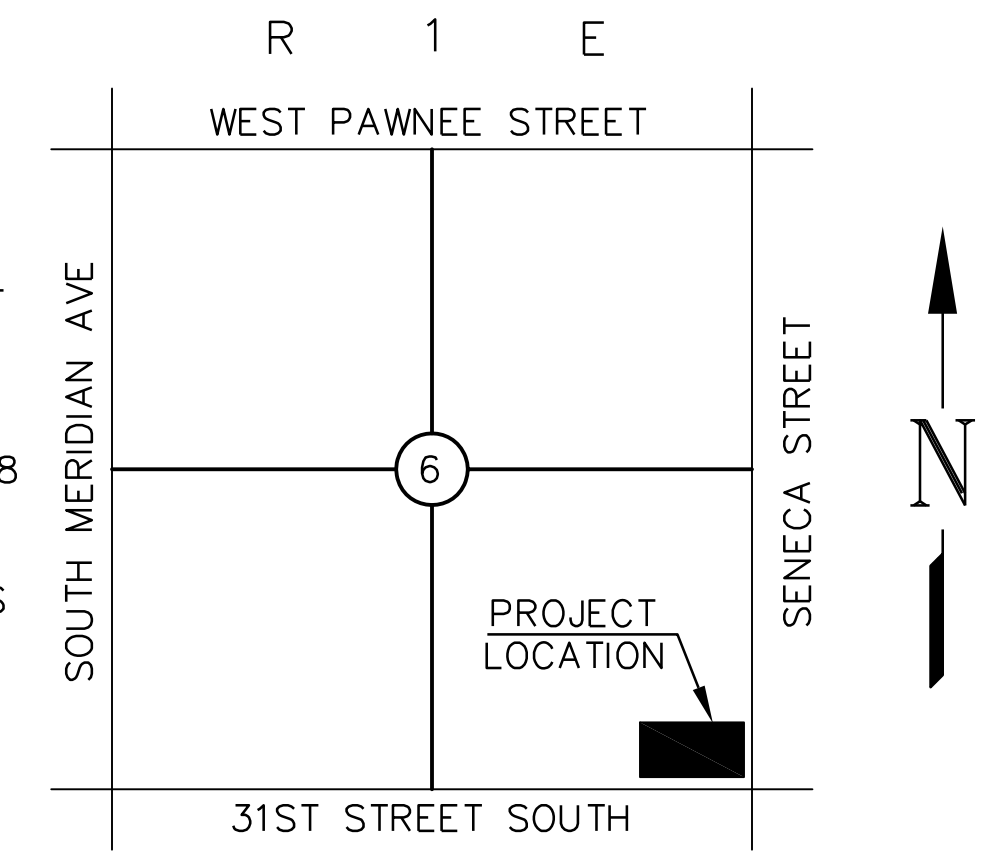
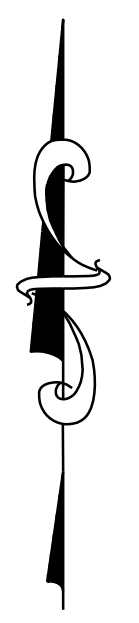
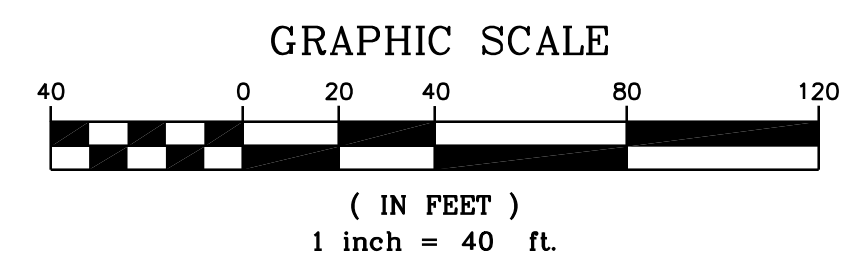


UTILITY STATEMENT & CAUTION:
 THE CONTRACTOR IS SPECIFICALLY CAUTIONED THAT THE LOCATION AND/OR ELEVATION OF EXISTING UTILITIES AS SHOWN ON THESE PLANS IS BASED ON A COMBINATION OF FIELD SURVEY INFORMATION, EXISTING DRAWINGS AND RECORDS OF THE VARIOUS UTILITY COMPANIES. THE ENGINEER MAKES NO GUARANTEE THAT THE UNDERGROUND UTILITIES SHOWN COMPRISE ALL SUCH UTILITIES IN THE AREA, EITHER IN SERVICE OR ABANDONED. THE ENGINEER FURTHER DOES NOT WARRANT THAT THE UNDERGROUND UTILITIES SHOWN ARE IN THE EXACT LOCATION ALTHOUGH HE DOES CERTIFY THAT THEY ARE LOCATED AS ACCURATELY AS POSSIBLE FROM INFORMATION AVAILABLE. THE ENGINEER HAS NOT PHYSICALLY LOCATED THE UNDERGROUND UTILITIES. THE CONTRACTOR MUST CALL THE APPROPRIATE UTILITY COMPANY AT LEAST 48 HOURS BEFORE ANY EXCAVATION TO REQUEST EXACT FIELD LOCATION OF UTILITIES. IT SHALL BE THE RESPONSIBILITY OF THE CONTRACTOR TO RELOCATE ALL EXISTING UTILITIES WHICH CONFLICT WITH THE PROPOSED IMPROVEMENTS SHOWN ON THE PLANS.

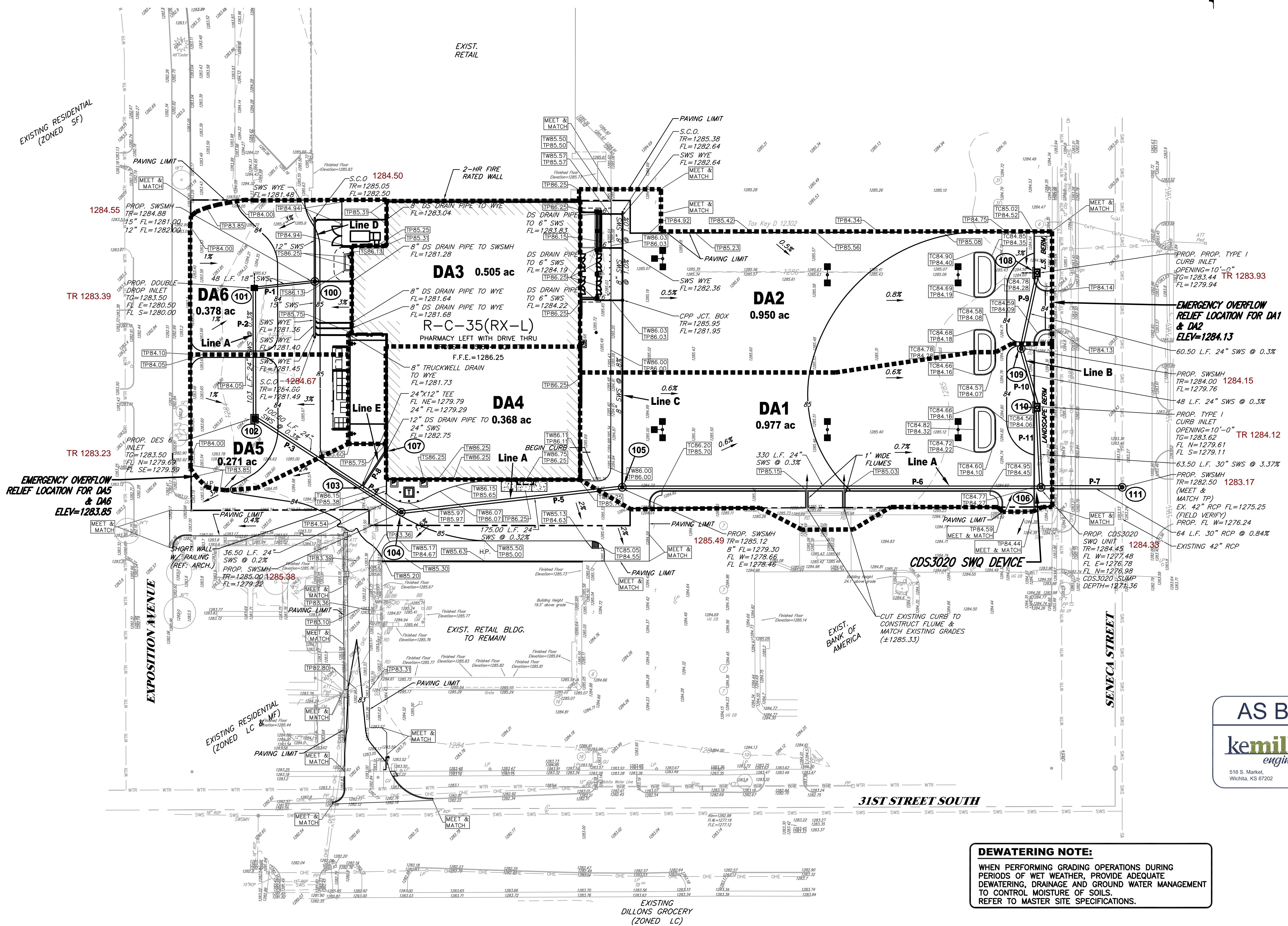
LEGEND

- SIGN (i.e. STOP, YIELD, etc...)
- XX — PROPOSED CONTOUR & CONTOUR ELEVATION
- LIGHT POLE AND FIXTURE TYPE
- TCXX.XX / TPXX.XX — SPOT ELEVATION
- TC — TOP OF CURB
- TP — TOP OF PAVEMENT
- TW — TOP OF WALK
- FL — FLOW LINE
- SW — STORM SEWER INLET
- S.C.O. — STORM SEWER CURB INLET
- S.W.M.H. — STORM SEWER MANHOLE
- F.D. — FLOW DIRECTION
- T.C. — TOP OF GUTTER
- S.W. — SIDEWALK
- H.P. — HIGH POINT



LOCATION MAP
NOT TO SCALE

- NOTES:**
- REFER ARCH. PLANS FOR LOCATION AND SIZE OF TRUCK WELL DRAIN.
 - CONTRACTOR SHALL MEET AND MATCH TOP OF JUNCTION BOXES/MANHOLES OR CLEAN OUTS WITH FINISHED PAVING GRADES.
 - STORM SEWERS LABELED AS "SWS" MAY BE OF HDPE (SMOOTH LINER)/ALUMINIZED CSP OR RCP MATERIAL AND SHALL MEET WALMART'S SITENETWORK SPECIFICATIONS. CONTRACTOR SHALL SUBMIT STORM PIPE PRODUCT DATA TO SMC CONSULTING ENGINEERS, P.C. FOR APPROVAL. CONTRACTOR SHALL SUBMIT PRECAST SHOP DRAWINGS OF THE STORM MANHOLES AND INLETS TO ENGINEER FOR VERIFICATION OF THE PIPE CONNECTION TO THESE STRUCTURES. ALUMINIZED CORRUGATED STEEL PIPES SHALL BE ULTRA FLOW OR W/ MANNINGS ROUGHNESS COEFFICIENT OF 0.013 OR BETTER.
 - THE SPOT ELEVATIONS AND CONTOUR ANNOTATIONS ARE BASED ON A F.F.E.=1286.25. THE SPOT ELEVATIONS AND CONTOUR ANNOTATIONS ARE PROTRACTED TO DOUBLE DIGITS FOR PLAN CLARITY.



DRAINAGE SURFACE SUMMARY			
	TOTAL AREA	PERVIOUS	IMPERVIOUS
DRAINAGE AREA DA1	± 0.977 AC.	± 0.124 A.C.	± 0.853 A.C.
DRAINAGE AREA DA2	± 0.950 AC.	± 0.023 A.C.	± 0.927 A.C.
DRAINAGE AREA DA3	± 0.505 AC.	± 0.000 A.C.	± 0.505 A.C.
DRAINAGE AREA DA4	± 0.368 AC.	± 0.000 A.C.	± 0.368 A.C.
DRAINAGE AREA DA5	± 0.271 AC.	± 0.000 A.C.	± 0.271 A.C.
DRAINAGE AREA DA6	± 0.378 AC.	± 0.000 A.C.	± 0.378 A.C.

- DRAINAGE AREA I.D.**
- DA1 = CURB INLET, STA. 10+63.50 SWS LINE B
 - DA2 = CURB INLET, STA. 11+72.00 SWS LINE B
 - DA3 = DOWNSPOUT FROM BUILDING TO SWSMH, STA. 18+57.00 SWS LINE A
 - DA4 = DOWNSPOUT FROM BUILDING TO SWS TEE, STA. 16+05.50 SWS LINE A
 - DA5 = DESIGN 6 AREA INLET, STA. 17+06.00 SWS LINE A
 - DA6 = DOUBLE DROP AREA INLET, STA. 18+09.00 SWS LINE A

AS BUILTS
kemiller engineering
 516 S. Market, Wichita, KS 67202 (316)264-0242

PROPOSED DRAINAGE PLAN
WALMART MARKET #5991-00
31st STREET & S. SENECA STREET WICHITA, KANSAS
SMC Consulting Engineers, P.C.
 815 West Main - Oklahoma City, OK 73106
 PH: 405-232-7715 Fax: 405-232-7859
 KANSAS CERTIFICATE OF AUTHORIZATION NO. E-335 EXP. Dec. 31, 2011

No.	Revision	By	Date
1	City & SMC review comments	MDS	03/29/11
2	SMC review comments	MDS	04/04/11
3	SMC review comments	MDS	04/12/11

DATE: 03/01/11 SCALE: 1"=40'
 DRAWN BY: MDS PROJECT NO.: 4966.00 SHEET NO. C-9.3
 ENGINEER: TERENCE L. HAYNES, P.E. #14583

DEWATERING NOTE:
 WHEN PERFORMING GRADING OPERATIONS DURING PERIODS OF WET WEATHER, PROVIDE ADEQUATE DEWATERING, DRAINAGE AND GROUND WATER MANAGEMENT TO CONTROL MOISTURE OF SOILS. REFER TO MASTER SITE SPECIFICATIONS.

NOT VALID FOR CONSTRUCTION UNLESS SIGNED IN THIS BLOCK