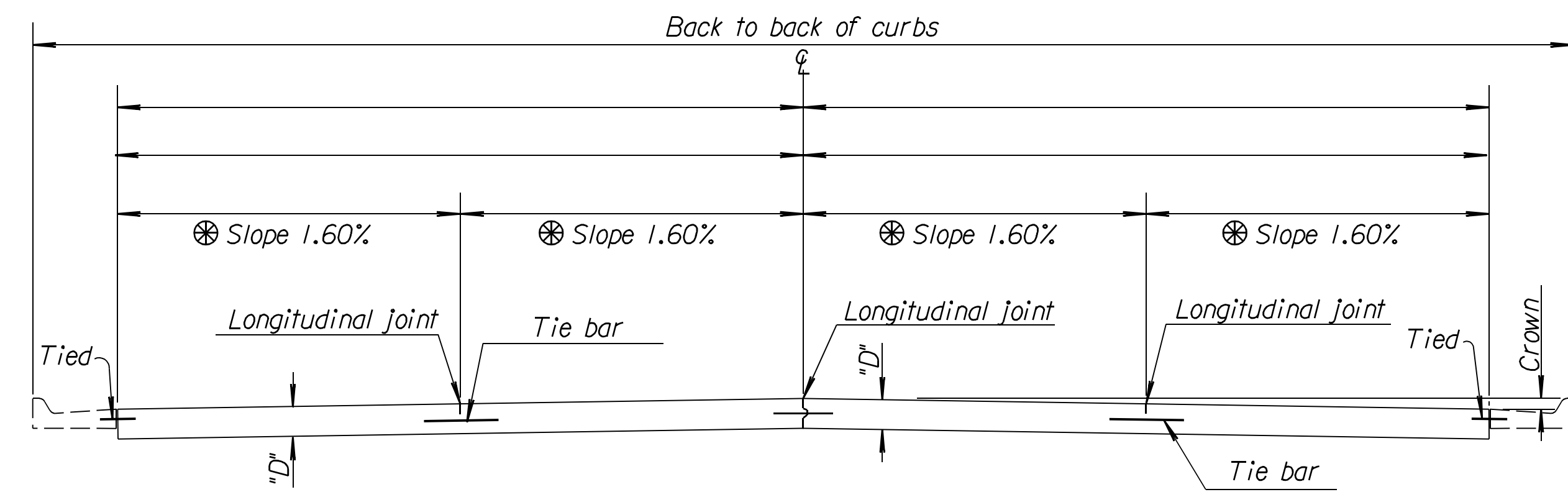


STATE	PROJECT NO.	YEAR	SHEET NO.	TOTAL SHEETS
KANSAS	87 N-0243-01	2005	27	169

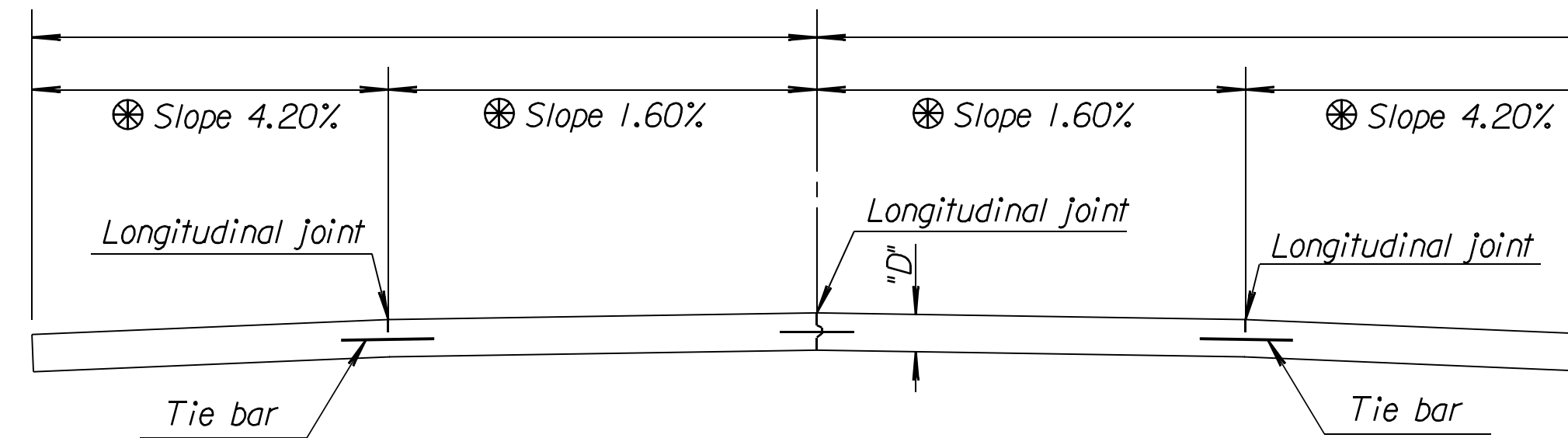
Note: Designer to add applicable dowel sizes.



For Curb & Gutter details
See Standard Drawing RD635.

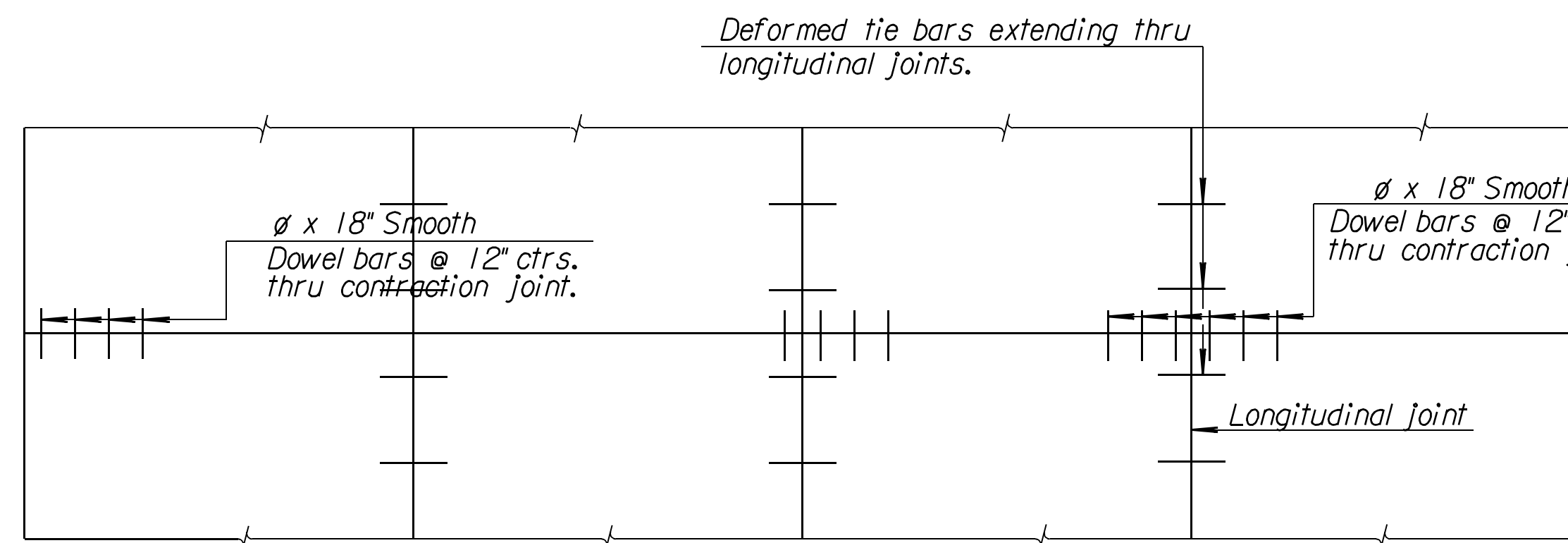
TRANSVERSE SECTION
(4 - LANE WITH CURB & GUTTER)

⊗ Normal cross slopes. See Typical Section or Cross Sections for variations.

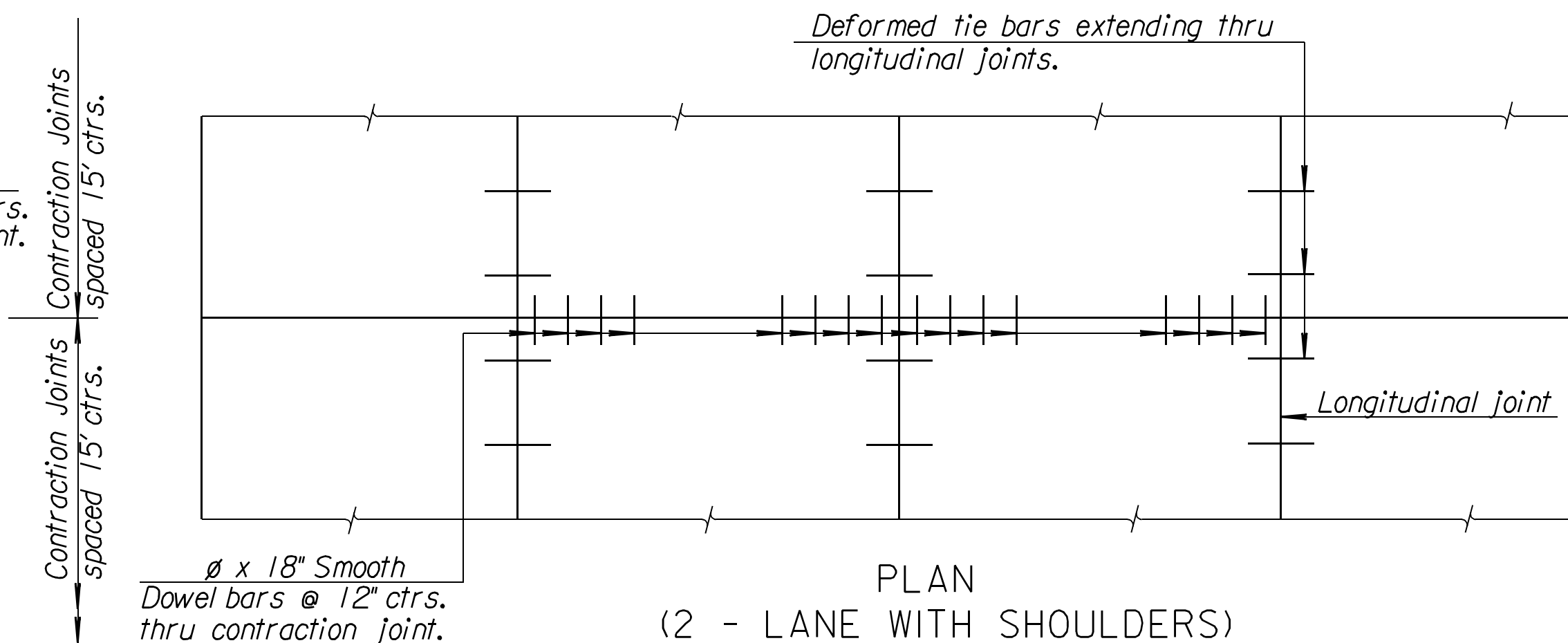


TRANSVERSE SECTION
(2 - LANE WITH SHOULDERS)

GENERAL NOTE
Epoxy coat all deformed tie bars. Patch any damage to the epoxy coating in accordance with the Standard Specifications.
Use billet steel Grade 40 reinforcing for deformed tie bars that require bending, may or may not be epoxy coated.
Place pressure relief joint at the end of the bridge approach pavement slab (no bars thru joint). For details of pressure relief joint see Standard Drawing RD712.
Use load transfer devices as shown in details at all contraction joints on mainline pavement unless otherwise noted. Shoulder contraction joints have no dowels unless specifically shown on the plans.
♦ Fill all sawed joints on this project in accordance with the Standard Specifications.
Shape all keyed joints similar to section of recessed form leg as shown on this sheet.
Evenly space tie bars along the length of the slab with no tie bar within 12" of contraction joint. All longitudinal joints are tied.
Shoulder rumble strips will not be constructed as part of this project.



PLAN
(4 - LANE WITH CURB & GUTTER)

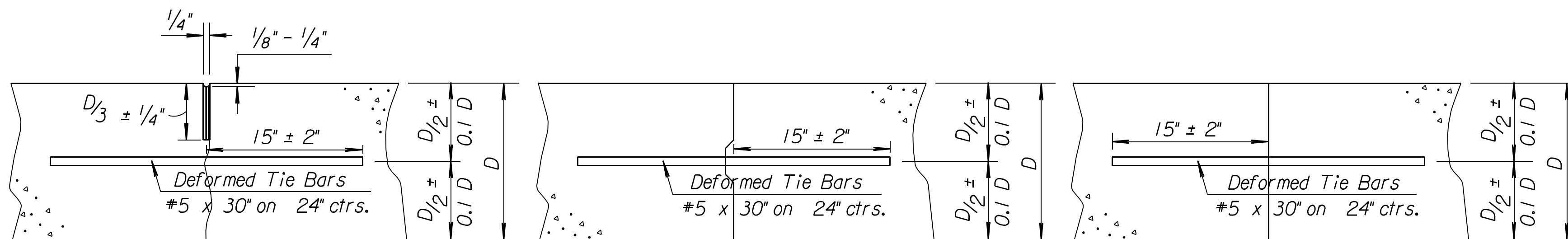


PLAN
(2 - LANE WITH SHOULDERS)

D (in.)	Diameter
8	1"
9	1 1/4"
10	1 1/4"
11	1 1/2"
12	1 1/2"

PAVEMENT DEPTH

D = ____



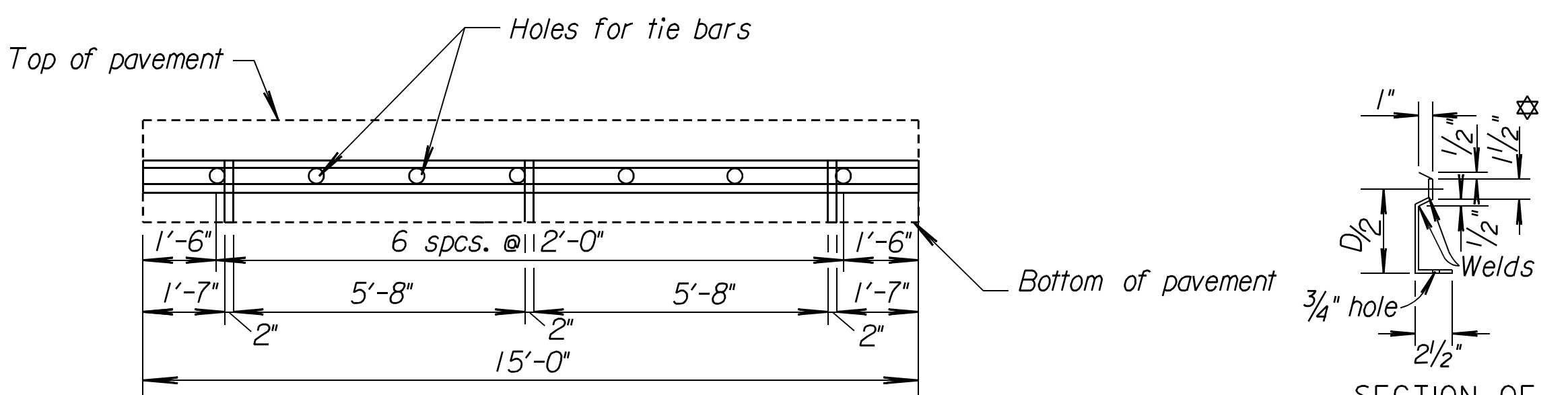
Tied Non-Keyed

Tied Keyed Construction

Tied Butt Construction

Note: For longitudinal construction joints the contractor has the option of using either the keyed or butt type.

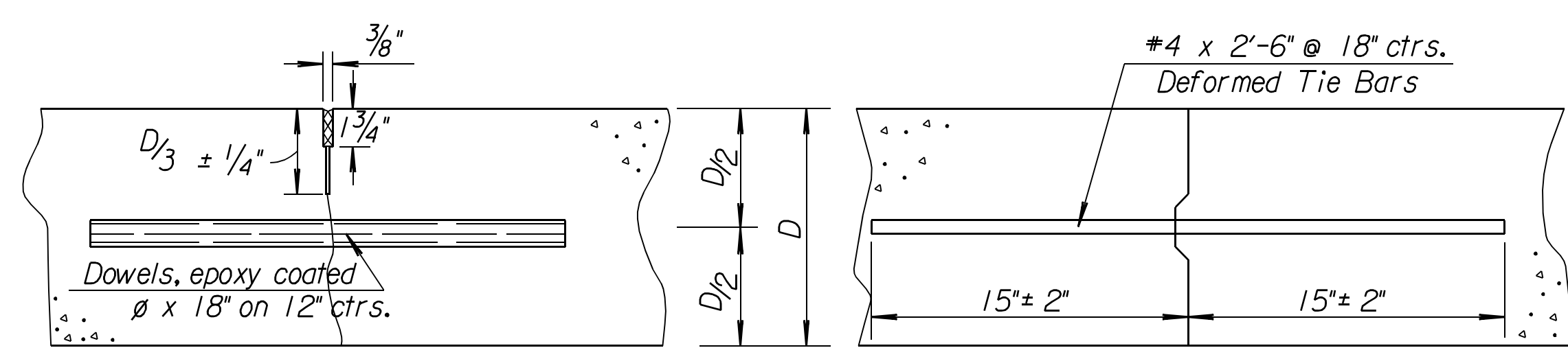
LONGITUDINAL JOINTS



SECTION OF RECESSED FORM LEG

METAL STRIP FOR LONGITUDINAL CONSTRUCTION JOINT

To be used only against forms, do not extend through contraction joints.
For automated placement tie bars are spaced at uniform 24" centers.
♦ Use snap-in leg or other approved design in lieu of welded leg.



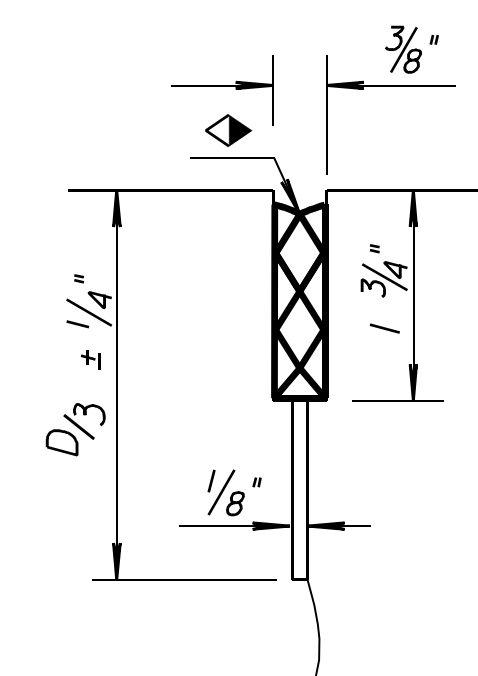
Contraction

Construction

TRANSVERSE JOINTS

Note: Construct contraction joints at plan locations or at the Engineer's direction.

When necessary to interrupt continuous placement for a substantial length of time or at the end of a day's paving, the Contractor has the option of ending placement at a contraction joint or with a construction joint located a minimum of five (5) feet from a contraction joint. Construct either joint type by placing a header at the end of the pour or by paving past the joint location. After the concrete has hardened, saw joint and drill holes for tie bars or dowels.



DETAIL OF CONTRACTION JOINT SAWCUT

Make an initial 1/8" saw cut (D/3 ± 1/4" depth); the second 3/8" saw cut is a separate operation done after concrete has gained sufficient strength to avoid spalling as determined by the Engineer.

NO.	DATE	REVISIONS	BY	APP'D
16	8-18-10	Revised Dowel Size & notes	S.W.K.	J.O.B.
15	5-20-08	Revised sawed joint note	S.W.K.	J.O.B.
14	11-07-07	Rev. pavement slope to percent	S.W.K.	J.O.B.

KANSAS DEPARTMENT OF TRANSPORTATION

CONCRETE PAVEMENT
DOWEL JOINTED
NON-REINFORCED

DESIGNED	6-01-11	APP'D.	James O. Brewer
DESIGN CK.	6-01-11	QUANTITIES	Traced Bowser
		TRACE CK.	King

Drawn By: \$\$\$USERNAME\$\$\$ Plotted: \$\$\$SYTIME\$\$\$
File: \$\$\$GNSPEC\$\$\$