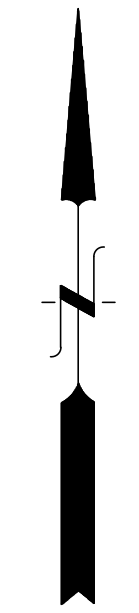
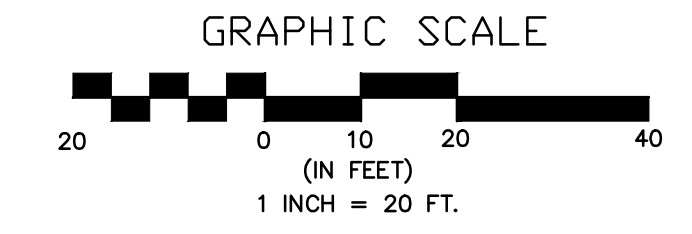
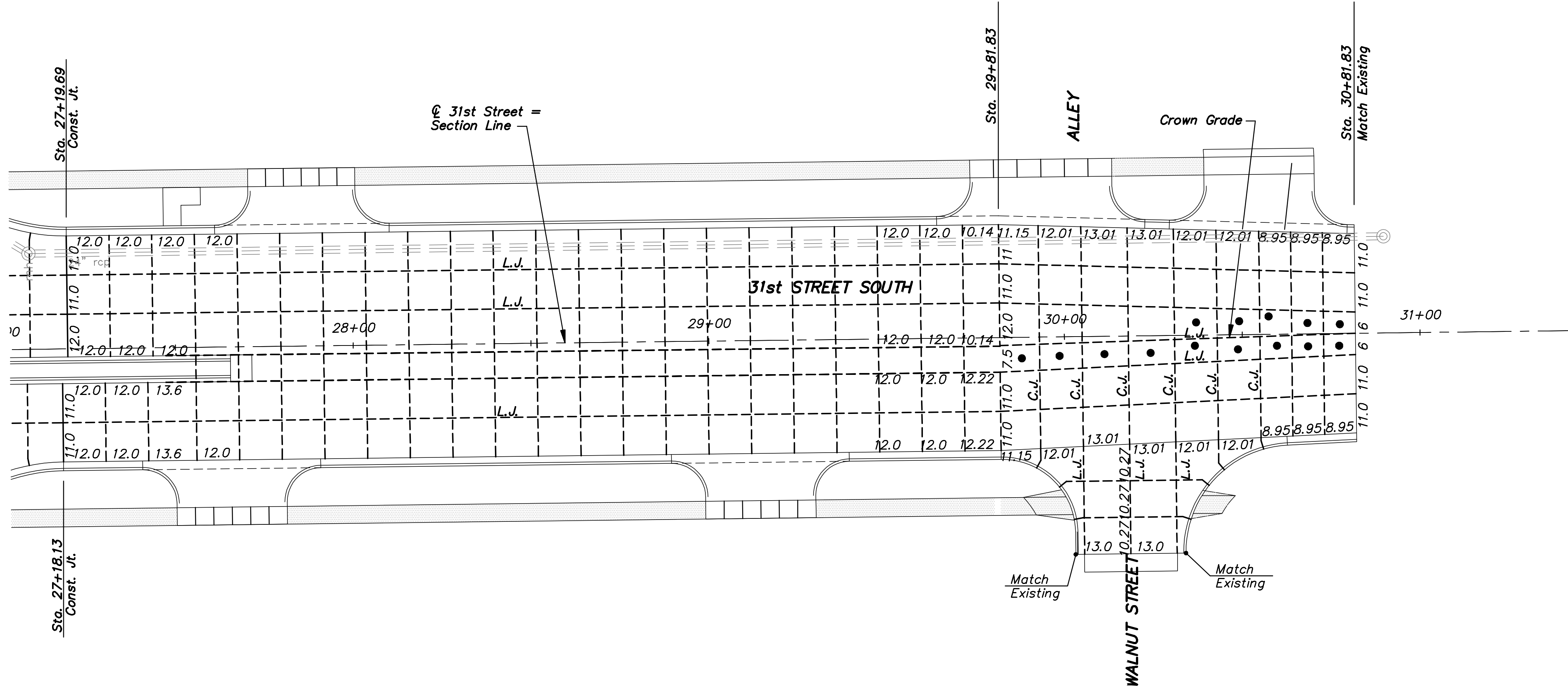


STATE	PROJECT NO.	YEAR	SHEET NO.	TOTAL SHEETS
KANSAS	87 N-0243-01	2005	42	169
Federal Aid No. STP N024(301)				



No.	Date	By	Approved	Revision



**LEGEND**

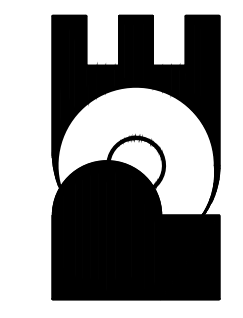
- Longitudinal Joint (L.J.)      - - - - - L.J.
- Contraction Joint (C.J.)      - - - - - C.J.
- Construction Joint (Const. Jt.)      - - - - - Const. Jt.

W.W.F. Reinforced  $\phi$

$\phi$  Welded Wire Fabric Shall Be: Transverse = W4.0@6"  
Longitudinal = W4.0@6"

SENECA STREET  
1-235 TO 31ST STREET  
CITY OF WICHITA, KANSAS  
JOINT PLAN-STA. 27+00 TO 30+81.83 (31ST STREET SOUTH)

**POE & ASSOCIATES, INC.**  
CONSULTING ENGINEERS  
5940 E. Central, Suite 200 | Wichita, KS  
67208-4242  
Phone 316/685-4114 | FAX 316/685-4444



**FINAL**

Engineer: P. FERGUSON  
Designer: J. UNRUH  
KDOT Job No.: 87 N-0243-01    Poe Job No.: 1794  
Date: JANUARY 2010