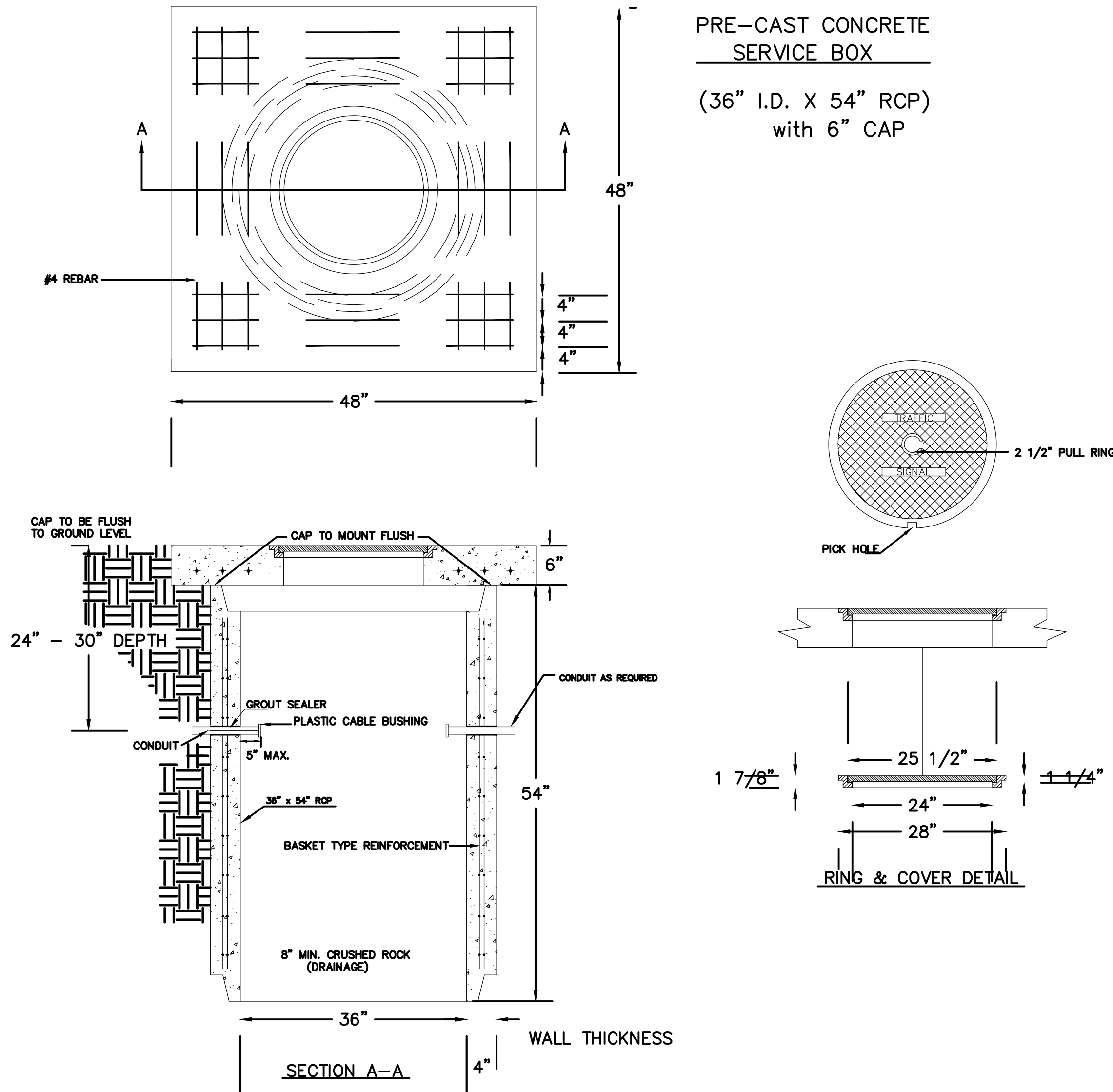
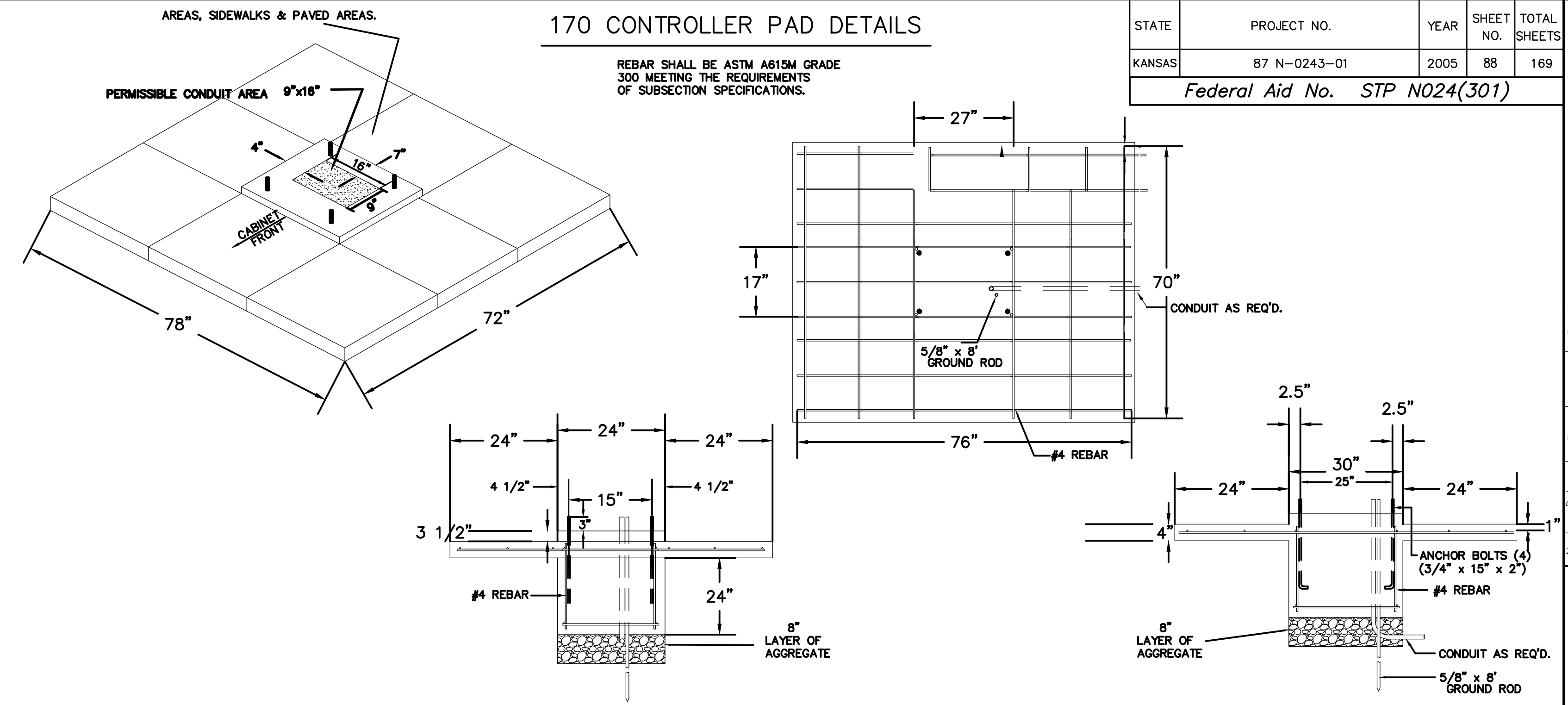


# SERVICE BOX CONSTRUCTION/INSTALLATION DETAILS

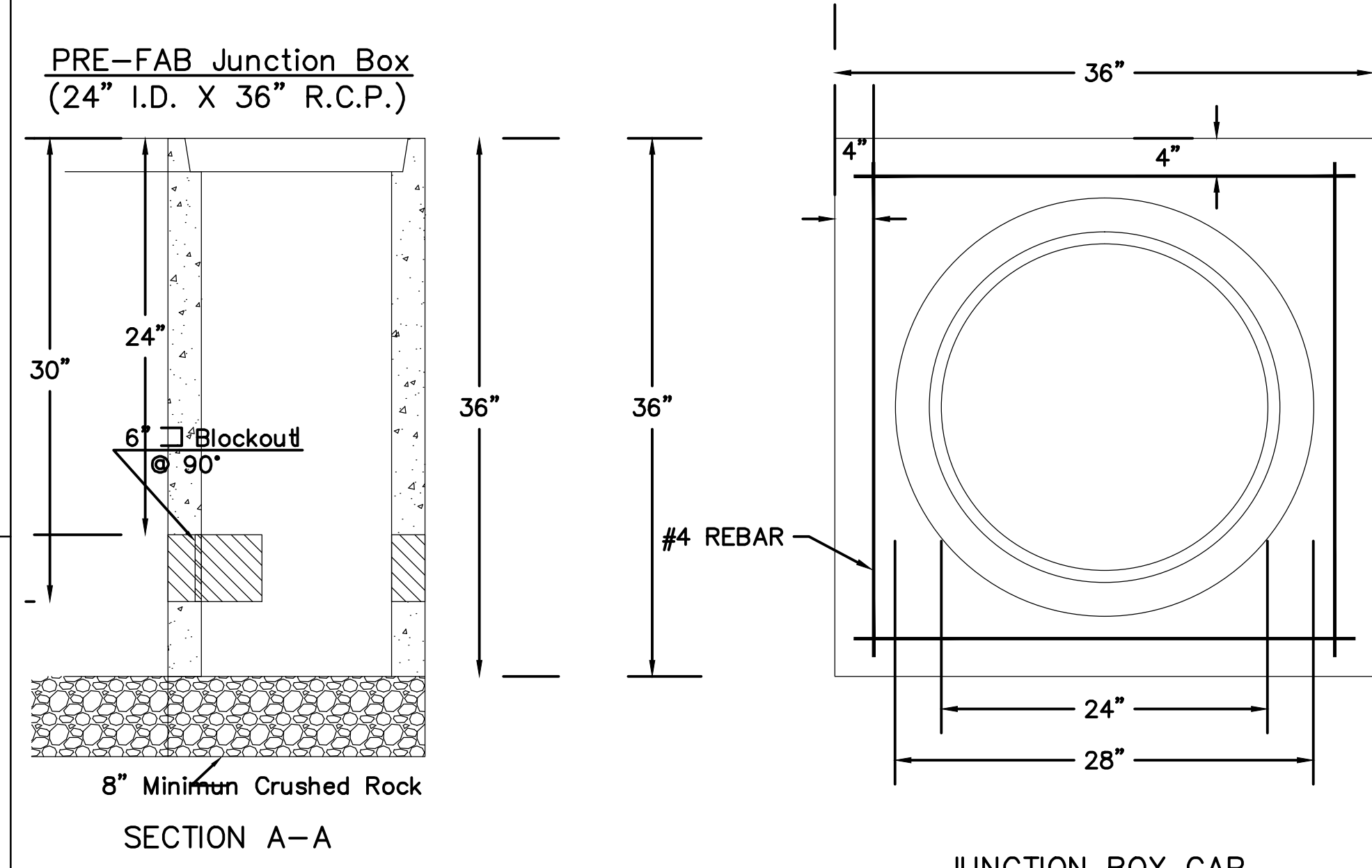


# 170 CONTROLLER PAD DETAILS

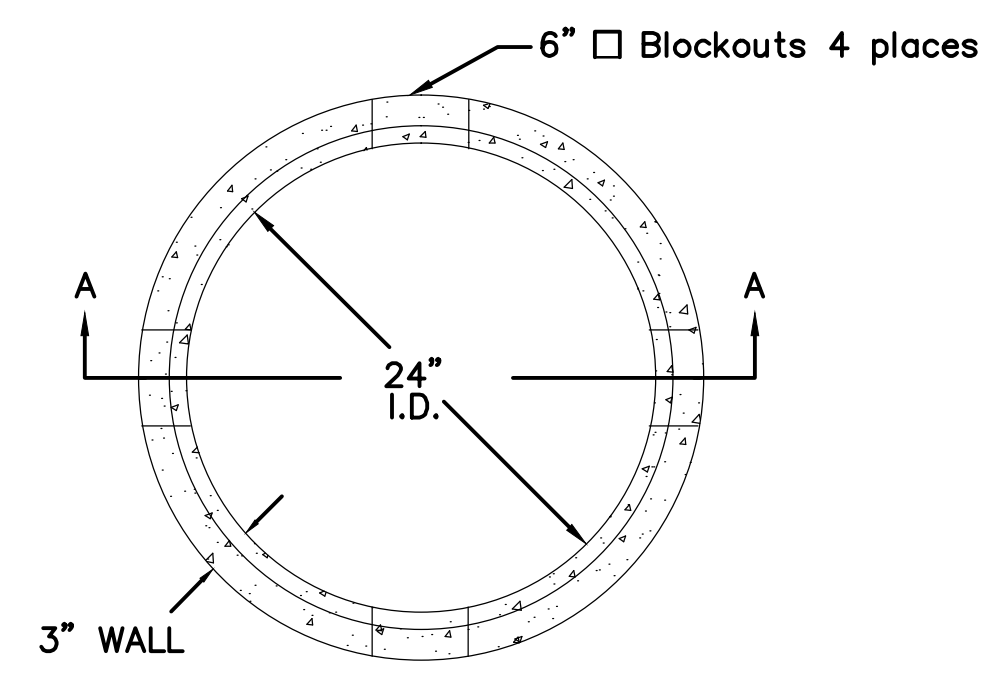


STATE	PROJECT NO.	YEAR	SHEET NO.	TOTAL SHEETS
KANSAS	87 N-0243-01	2005	88	169
Federal Aid No. STP N024(301)				

# JUNCTION BOX DETAILS



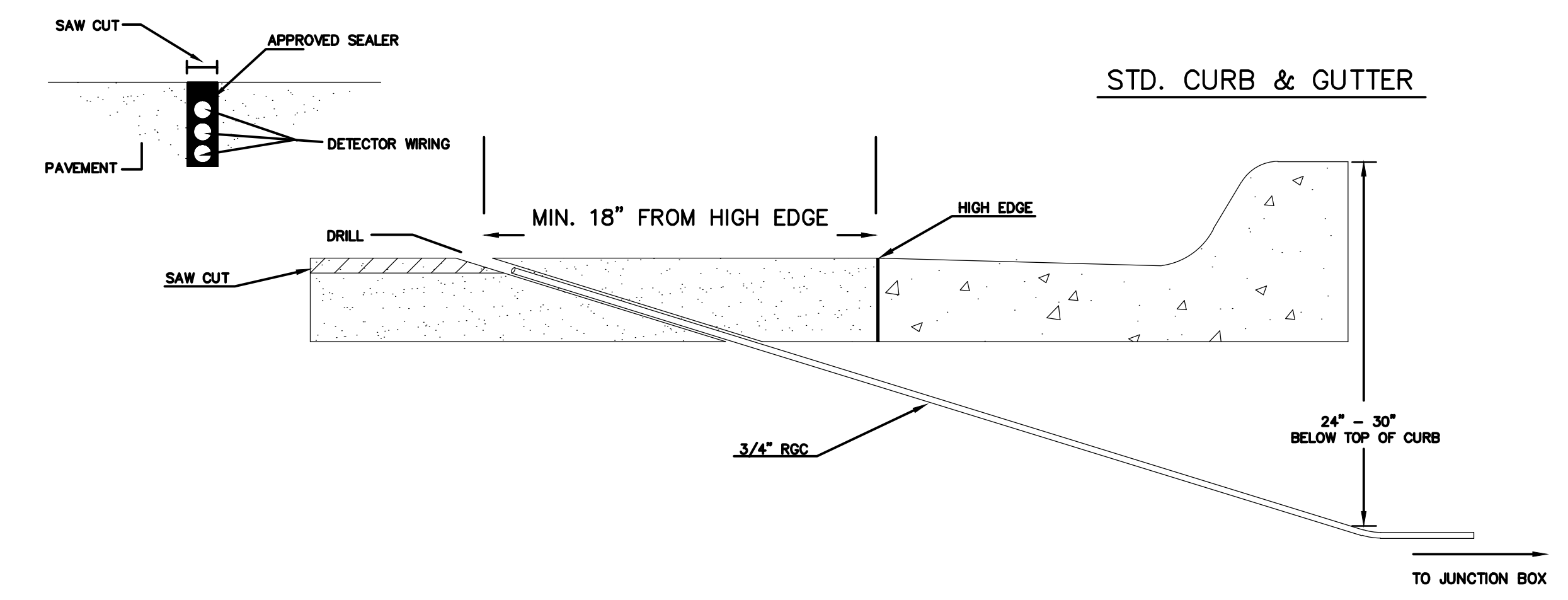
**JUNCTION BOX CAP**  
36" x 36" x 6"  
TOP OF CAP TO BE FLUSH WITH GROUND LEVEL.



# NOTES:

- SERVICE & JUNCTION BOX:**
- CONDUIT CONNECTION TO BE FLUSH TO WITHIN 5" OF INSIDE FACE OF SIDE WALL, CONDUIT TO DRAIN INTO SERVICE BOX.
  - CONDUIT CONNECTIONS TO SERVICE BOX SHALL BE TERMINATED WITH PLASTIC CABLE BUSHING.
  - CONDUIT SHALL BE SEALED WITH APPROVED SEALER AT INSIDE WALL FACE.
  - ALL SERVICE & JUNCTION BOXES TO HAVE 8" OF CRUSHED ROCK.
- TRENCHING:**
- DEPTH TO BE 30" MINIMUM WITH ROCK & STUBBLE FREE BACKFILL TO SERVE AS BEDDING MATERIAL. MAINTAIN MINIMUM CONDUIT DEPTH IN TRENCH.
  - BACKFILL TO BE COMPACTED IN 6" LOOSE LIFTS BY HAND OR MECHANICAL TAMPING TO A 95% STANDARD DENSITY.
- CONDUIT:**
- SLOPE CONDUIT TO DRAIN AS DIRECTED BY THE ENGINEER.
  - 3" RIGID STEEL CONDUIT BTWN. SERVICE BOXES.  
2" " " " BTWN. SERVICE BOX AND POLE.  
1 1/4" " " " BTWN. SERVICE & JUNCTION BOXES.  
3/4" " " " BTWN. JUNCTION BOXES.  
3/4" " " " BTWN. JUNCTION BOX & DETECTOR LOOP SAW CUT

# CONDUIT/DETECTOR WIRE INSTALLATION DETAILS



PROJECT DESCRIPTION			
<b>SERVICE/JUNCTION BOX, CONTROLLER PAD CONSTRUCTION/INSTALLATION DETAILS</b>			
PROJECT NUMBER			
DRAWN BY: T.M.	APPROVED BY:	REVISED: A.S.	
DATE: Apr. 96		DATE: Jan. 2006	
CITY OF WICHITA DEPARTMENT OF PUBLIC WORKS			
TRAFFIC ENGINEERING DIVISION		SCALE	

SENECA STREET  
1-235 TO 31ST STREET  
CITY OF WICHITA, KANSAS  
SERVICE/JUNCTION BOX, CONTROLLER PAD CONSTRUCTION/INSTALLATION DETAILS

POE & ASSOCIATES, INC.  
CONSULTING ENGINEERS  
5940 E. Central, Suite 200 | Wichita, KS  
67208-4242  
Phone: 316/685-4114 | FAX: 316/685-4444

Engineer: P. FERGUSON  
Designer: J. UNRUH  
KDOT Job No.: 87 N-0502-01  
Date: JANUARY 2010

Sheet 88 of 169