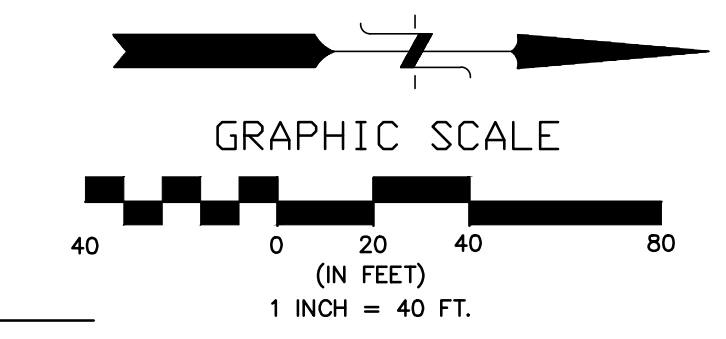
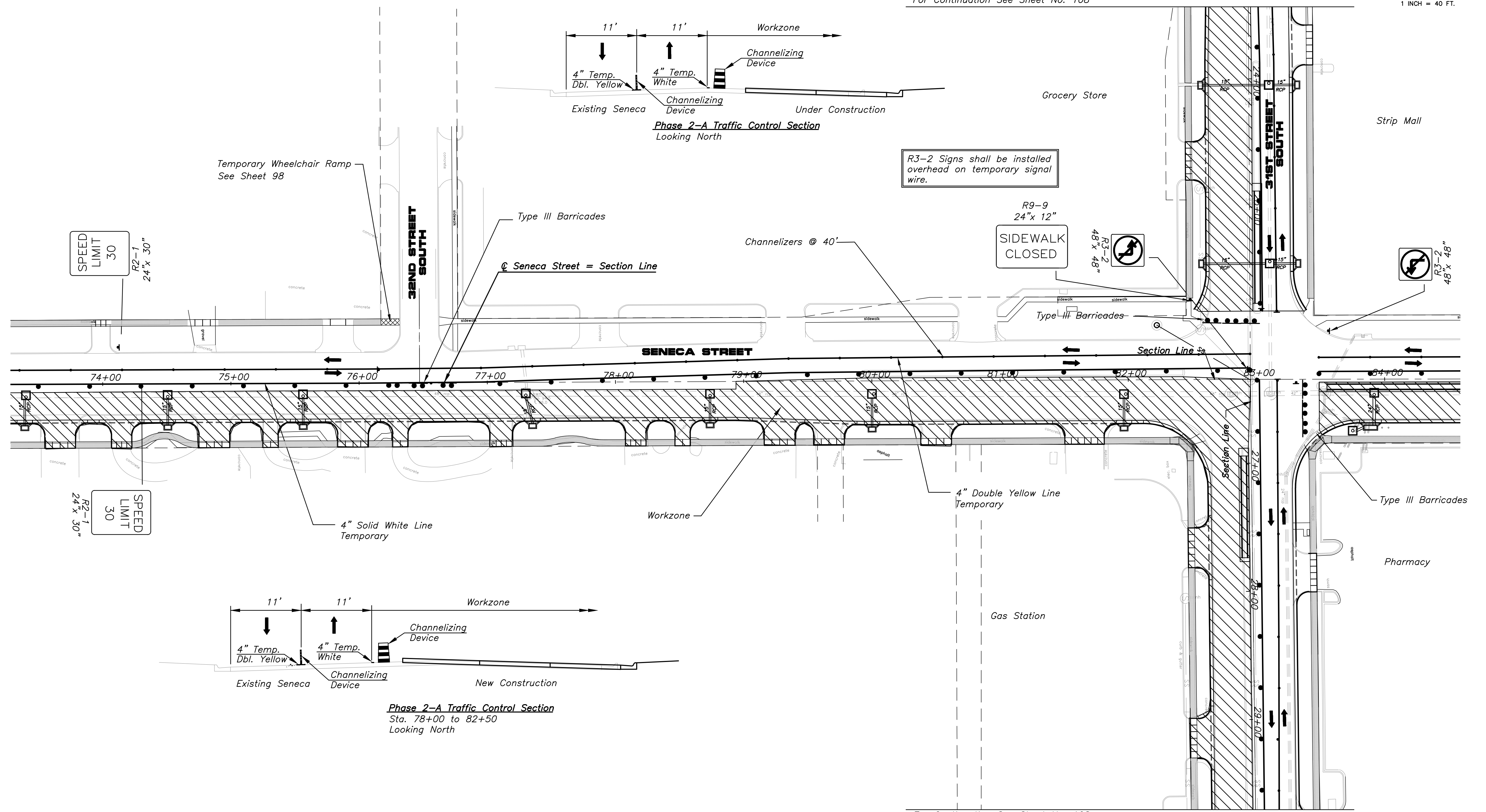


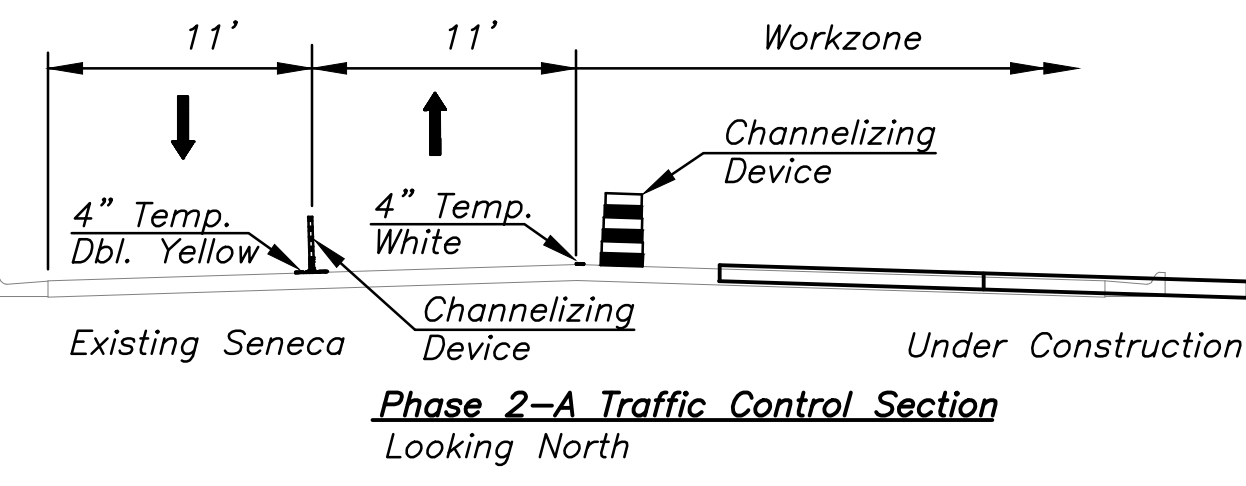
STATE	PROJECT NO.	YEAR	SHEET NO.	TOTAL SHEETS
KANSAS	87 N-0243-01	2005	106	169
Federal Aid No. STP N024(301)				



For Continuation See Sheet No. 108



For Continuation See Sheet No. 108



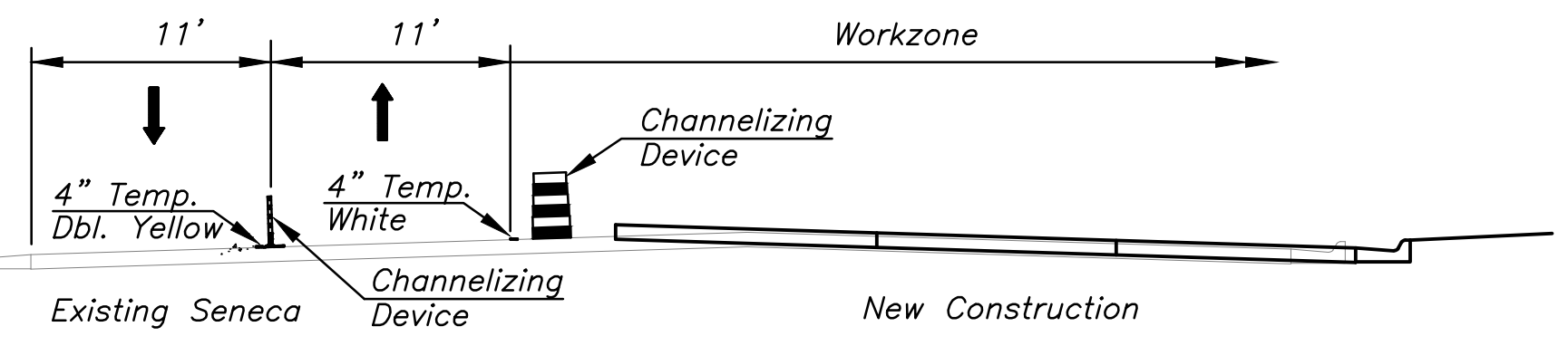
Temporary Wheelchair Ramp
See Sheet 98

R3-2 Signs shall be installed
overhead on temporary signal wire.

SPEED
LIMIT
30
R2-1
24" x 30"

R9-9
24" x 12"
SIDEWALK
CLOSED

SPEED
LIMIT
30
R2-1
24" x 30"



Phase 2-A Traffic Control Section
Sta. 78+00 to 82+50
Looking North

No.	Date	By	Approved	Revision

SENECA STREET
1-235 TO 31ST STREET
CITY OF WICHITA, KANSAS
TRAFFIC CONTROL - PHASE 2-A

POE & ASSOCIATES, INC.
CONSULTING ENGINEERS
5940 E. Central, Suite 200 | Wichita, KS
67208-4242
Phone: 316/685-4114 | FAX: 316/685-4444

FINAL

Engineer: P. FERGUSON
Designer: J. UNRUH
KDOT Job No.: 87 N-0243-01 Poe Job No.: 1794
Date: JANUARY 2010