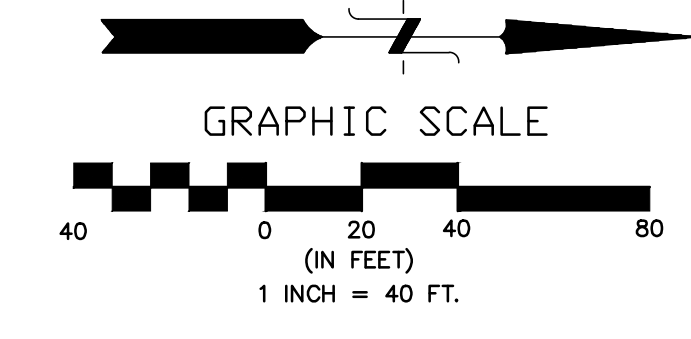
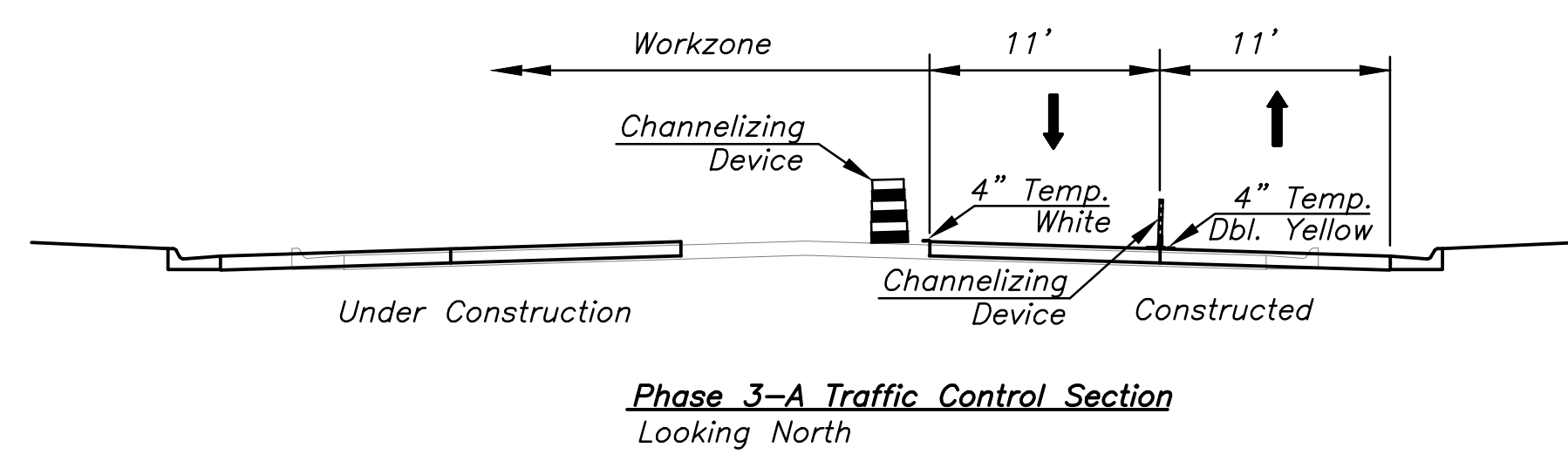


STATE	PROJECT NO.	YEAR	SHEET NO.	TOTAL SHEETS
KANSAS	87 N-0243-01	2005	114	169
Federal Aid No. STP N024(301)				

DODGE STREET



CALVERT STREET



ROAD CLOSED
THRU TRAFFIC
R11-4
60"x 30"

ROAD CLOSED
R11-2
48"x 30"

Note:
Contractor may not close consecutive side streets.

SPEED LIMIT 30
24"x 30"
R2-1

SPEED LIMIT 30
24"x 30"
R2-1

Remove Exist. Conflicting Pavement Markings as Necessary Subsidiary to Traffic Control

See TE742 for Advanced Signing

See TE742 for Advanced Signing

Arrow Display

4" Solid White Line Temporary

4" Solid Yellow Line Temporary

4" Solid White Line Temporary

4" Double Yellow Line Temporary

250' Taper

250' Buffer

Seneca Street = Section Line

36TH STREET SOUTH

36TH STREET SOUTH

I-235 Ramp

I-235 Ramp

No.	Date	By	Approved	Revision

SENECA STREET
I-235 TO 31ST STREET
CITY OF WICHITA, KANSAS
TRAFFIC CONTROL - PHASE 3-A

POE & ASSOCIATES, INC.
CONSULTING ENGINEERS
5940 E. Central, Suite 200 | Wichita, KS
67208-4242
Phone 316.685-4114 | FAX 316.685-4444

FINAL

Engineer: P. FERGUSON
Designer: J. UNRUH
KDOT Job No.: 87 N-0243-01
Date: JANUARY 2010

Sheet 114 of 169