

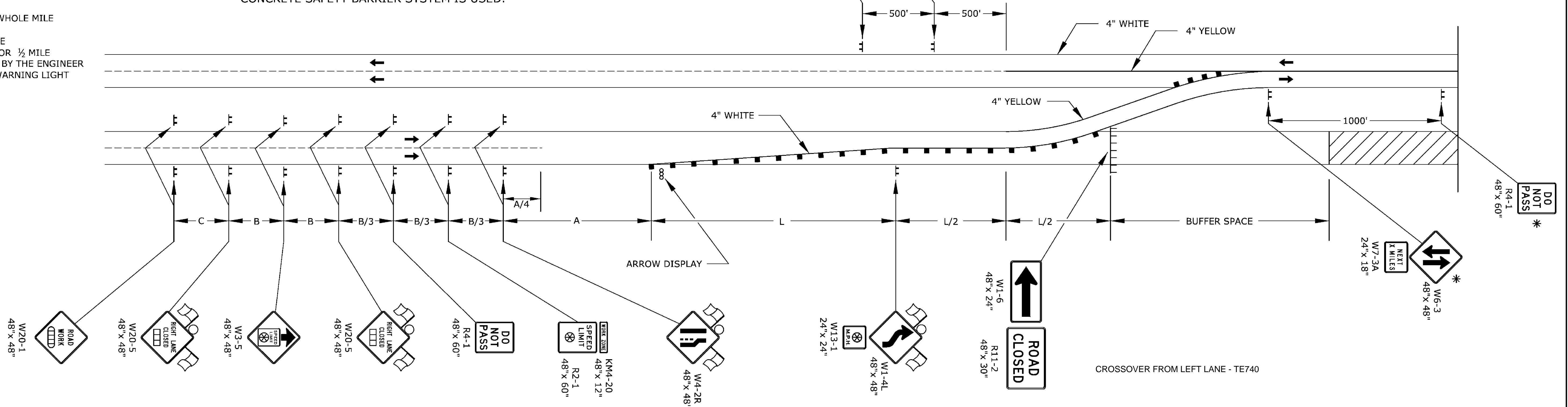
STATE	PROJECT NO.	YEAR	SHEET NO.	TOTAL SHEETS
KANSAS	87 N-0243-01	2005	131	169

REFER TO STD. TE710 FOR ADDITIONAL INFORMATION ON TEMPORARY TRAFFIC CONTROL SIGNS AND SIGN SPACING. REFER TO STD. TE704 FOR TYPE III BARRICADES. REFER TO STD. TE702 FOR INFORMATION ON TAPERS AND CHANNELIZING DEVICES. REFER TO STD. TE700 FOR LENGTH OF BUFFER SPACE.

THE W6-3 & R4-1 SIGN COMBINATION MAY BE REQUIRED AT ADDITIONAL LOCATIONS ALONG THE PROJECT. THE SPACING BETWEEN THESE LOCATIONS SHALL BE A MAXIMUM OF 1 MILE. THE W7-3A SIGN SHOULD BE MOUNTED WITH THE W6-3 SIGN AT 2 MILE INCREMENTS ON A PROJECT OF 4 MILES OR LONGER.

- \* SIGN TO BE ELIMINATED IF CONCRETE SAFETY BARRIER SYSTEM IS USED.
- \*\* BARRICADE TO BE ELIMINATED AND SIGN W1-6 TO BE MOUNTED ON SKIDS IF CONCRETE SAFETY BARRIER SYSTEM IS USED.

- LLL TYPE III BARRICADES
- X LENGTH TO THE NEAREST WHOLE MILE
- CHANNELIZING DEVICE
- ▨ AHEAD, 1500 FT, OR 1 MILE
- ▩ AHEAD, 1000 FT, 1500 FT, OR 1/2 MILE
- ⊗ SPEED TO BE DETERMINED BY THE ENGINEER
- TYPE "A" LOW INTENSITY WARNING LIGHT

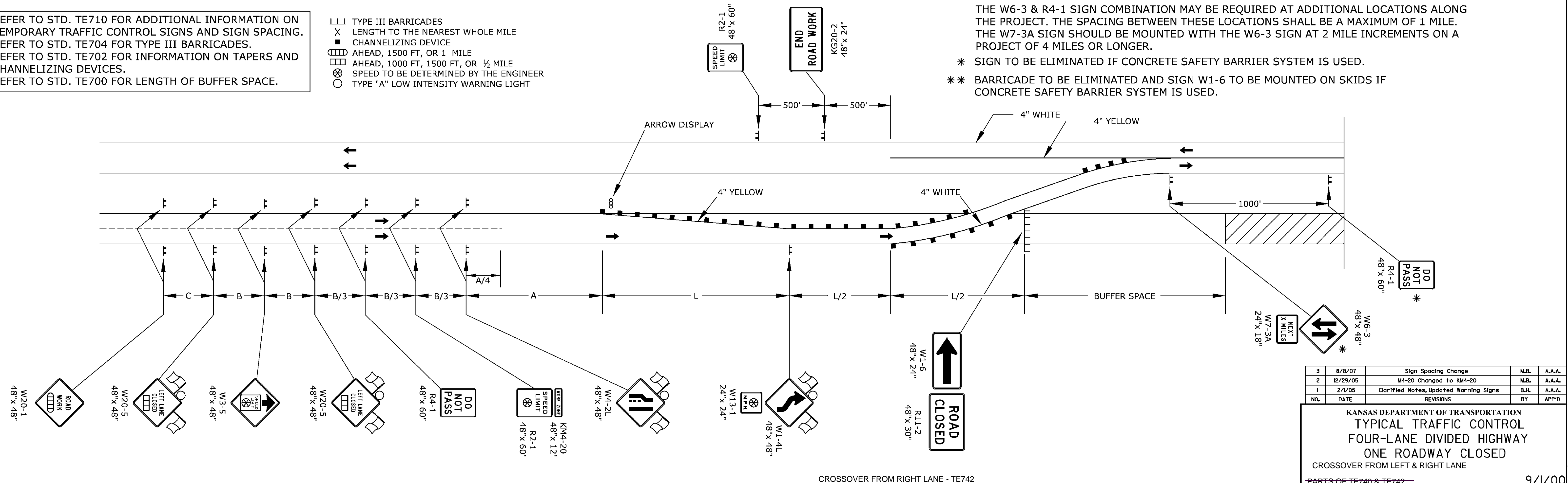


REFER TO STD. TE710 FOR ADDITIONAL INFORMATION ON TEMPORARY TRAFFIC CONTROL SIGNS AND SIGN SPACING. REFER TO STD. TE704 FOR TYPE III BARRICADES. REFER TO STD. TE702 FOR INFORMATION ON TAPERS AND CHANNELIZING DEVICES. REFER TO STD. TE700 FOR LENGTH OF BUFFER SPACE.

- LLL TYPE III BARRICADES
- X LENGTH TO THE NEAREST WHOLE MILE
- CHANNELIZING DEVICE
- ▨ AHEAD, 1500 FT, OR 1 MILE
- ▩ AHEAD, 1000 FT, 1500 FT, OR 1/2 MILE
- ⊗ SPEED TO BE DETERMINED BY THE ENGINEER
- TYPE "A" LOW INTENSITY WARNING LIGHT

THE W6-3 & R4-1 SIGN COMBINATION MAY BE REQUIRED AT ADDITIONAL LOCATIONS ALONG THE PROJECT. THE SPACING BETWEEN THESE LOCATIONS SHALL BE A MAXIMUM OF 1 MILE. THE W7-3A SIGN SHOULD BE MOUNTED WITH THE W6-3 SIGN AT 2 MILE INCREMENTS ON A PROJECT OF 4 MILES OR LONGER.

- \* SIGN TO BE ELIMINATED IF CONCRETE SAFETY BARRIER SYSTEM IS USED.
- \*\* BARRICADE TO BE ELIMINATED AND SIGN W1-6 TO BE MOUNTED ON SKIDS IF CONCRETE SAFETY BARRIER SYSTEM IS USED.



Plotted : 08-SEP-2010 11:12  
Traffic  
Drawn By : mushcock  
File : TE740.dgn (TE740)

3	8/8/07	Sign Spacing Change	M.B.	A.A.A.
2	12/29/05	M4-20 Changed to KM4-20	M.B.	A.A.A.
1	2/1/05	Clarified Notes, Updated Warning Signs	S.H.	A.A.A.
NO.	DATE	REVISIONS	BY	APP'D

KANSAS DEPARTMENT OF TRANSPORTATION				
TYPICAL TRAFFIC CONTROL				
FOUR-LANE DIVIDED HIGHWAY				
ONE ROADWAY CLOSED				
CROSSOVER FROM LEFT & RIGHT LANE				
PARTS OF TE740 & TE742				
9/1/00				
DESIGNED	B.A.H.	DETAILED	B.A.H.	QUANTITIES
DESIGN CK.	DETAIL CK.	QUAN. CK.	TRACED	TRACE CK.