

CAUTION! Existing U/G AT&T Fiber Optic line and FAA communication line near. Contractor shall protect from damage and locate by potholing and hand excavation only. Contact Jason Edwards, AT&T, at 268-2008 with any questions or necessary coordination.

Remove and Dispose of Existing Rip-Rap as necessary for Construction. Cost to be included in bid item "Site Clearing".

Sta. 0+00 to Sta. 0+50.6
Construct 134 S.Y. 6" Reinforced Concrete Pavement (35 SY of 134 SY is concrete slope protection). See Detail, Sheet 6.

Transition from typical reinforced concrete flume section to slope protection section in 5' at Sta. 0+45 to Sta. 0+50.6.

Sta. 0+50.6
BL Sta. 1+51.1, 69.6' Rt. Begin Construction of 8' Wide Reinf. Concrete Flume (6"). See Details, Sheets 5 & 6.

Sta. 2+92.74
BL Sta. 3+93.26, 66.57' Rt. Construct Transition Apron to Reinforced Concrete Flume with toewall. See Detail, Sheet 6.

SCALE:
1" = 20' HORIZONTAL
1" = 5' VERTICAL
• = IRON

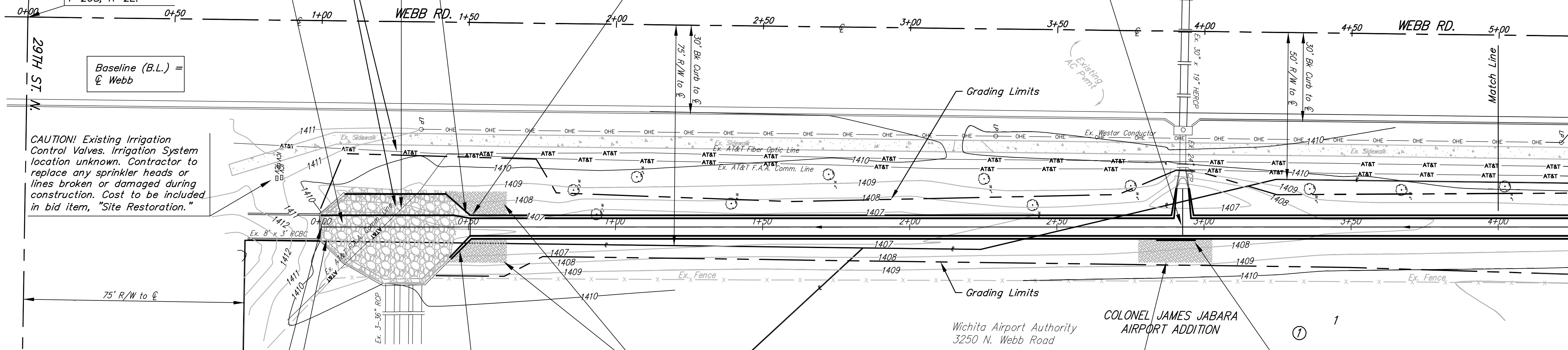
BENCHMARKS:

"□" Cut in center of 8' x 3' of RCBC Headwall 100' north and 70' east of the SW Corner of Sec. 33, T-26S, R-2E.

Elev. = 1410.10 NAVD88 Datum

"+" Cut on traffic signal box, 495' north and 37' west of the SW Corner of Sec. 33, T-26S, R-2E.

Elev. = 1410.68 NAVD88 Datum



CAUTION! Existing Irrigation Control Valves. Irrigation System location unknown. Contractor to replace any sprinkler heads or lines broken or damaged during construction. Cost to be included in bid item, "Site Restoration."

N = 1704935.56
E = 1680713.60
Sta. 0+00

Prior to construction, Remove rip-rap adjacent to RCBC inlet and install staked straw bale barrier for full width of RCBC entrance until adjacent concrete pavement is installed. Top of straw bale barrier shall be 6" or more above flow line of RCBC. After pavement is constructed, install 12" mulch filled waddle on pavement against inlet of RCBC with reinforcement. Each barrier shall be bid as BMP, Ditch Check per each.

Sta. 0+43 to Sta. 0+50, Transition Flume Curb to match existing wall height and thickness. Drill and Grout 24" long #4 rebar 12" into existing concrete wall at 12" spacing.

Sta. 0+34 to Sta. 0+64, Rt. & Lt. Install 20' x 8' (18 SY ea., 36 SY total) WintersTurf Turf Reinforcement Mat. Trim as necessary to fit around concrete walls and slope protection. Soil Fill and install per manufacturer's recommendations. All materials, labor, etc. to complete installation to be included in bid item, "BMP, Turf Reinforcement Mat."

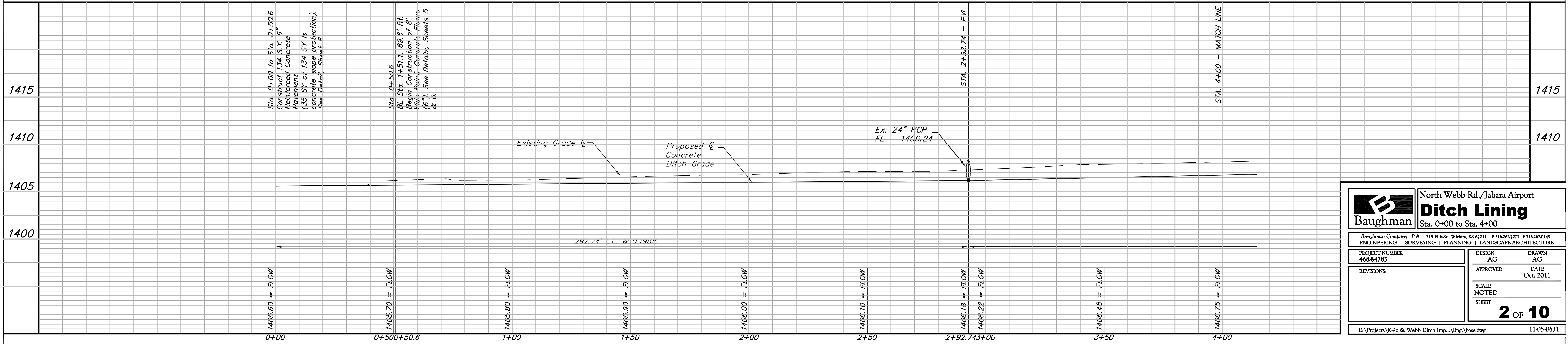
Sta. 2+78 to Sta. 3+03, Rt. Install 25' x 8' (23 SY) WintersTurf Turf Reinforcement Mat. Trim as necessary to fit around Splash Block. Soil Fill and install per manufacturer's recommendations. All materials, labor, etc. to complete installation to be included in bid item, "BMP, Turf Reinforcement Mat."

Sta. 2+84.5 to Sta. 2+97 Rt. Construct Splash Block. See Detail, Sheet 5.

Contractor shall over excavate any soft spots below the concrete flume, block wall, or reinforced concrete pavement and replace with suitable material compacted to 95% Std. Density. If on-site material is unsuitable for subgrade compaction, material shall be imported to provide adequate compaction. Cost of import material shall be incidental to reinforced concrete flume bid item.

Remove and Dispose of Existing Trees Only as Necessary For Construction. Cost to be Included in bid item, "Site Clearing."

Contractor shall remove and replace any concrete sidewalk panels damaged during construction. Cost to be Included in bid item, "Site Restoration."



		North Webb Rd./Jabara Airport	
		Ditch Lining	
Sta. 0+00 to Sta. 4+00		<small>Baughman Company, P.A. 315 Ellis St. Wichita, KS 67211 P 316-262-7271 F 316-262-0149</small> <small>ENGINEERING SURVEYING PLANNING LANDSCAPE ARCHITECTURE</small>	
PROJECT NUMBER 468-84783	DESIGN AG	DRAWN AG	DATE Oct. 2011
REVISIONS:	SCALE NOTED SHEET		
2 OF 10			
E:\Projects\K96 & Webb Ditch Imp.\Eng.Usace.dwg			11-05-E631