

**BENCHMARKS:**

"□" Cut in center of 8' x 3' of RCBC Headwall 100' north and 70' east of the SW Corner of Sec. 33, T-26S, R-2E.

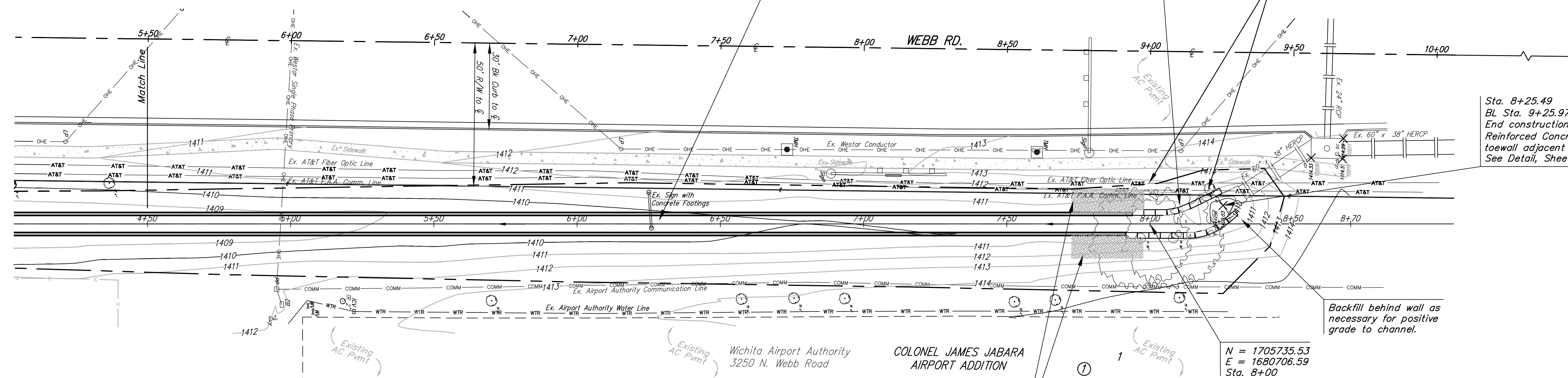
Elev. = 1410.10 NAVD88 Datum

"+" Cut on traffic signal box, 495' north and 37' west of the SW Corner of Sec. 33, T-26S, R-2E.

Elev. = 1410.68 NAVD88 Datum



SCALE:  
1" = 20' HORIZONTAL  
1" = 5' VERTICAL  
• = IRON



Existing Traffic Sign Footings to Remain. Contractor shall place a 1/2" expansion joint around existing traffic sign footing within concrete ditch liner. Cost of Expansion Joint Incidental to Reinforced Concrete Flume bid item. See Expansion Joint Detail, Sheet 6.

Sta. 8+25.49  
BL Sta. 9+25.97, 60.01' Rt.  
Construct 73.0 L.F. RECON Retaining Wall (33.0 L.F. left, 40.0 L.F. right). See Sheet 4 for details. Extend Concrete base and toe wall adjacent to end section to support block wall.

CAUTION! Existing U/G AT&T Fiber Optic line and FAA communication line near. Contractor shall protect from damage and locate by potholing and hand excavation only. Contact Jason Edwards, AT&T, at 268-2008 with any questions or necessary coordination.

Sta. 8+25.49  
BL Sta. 9+25.97, 60.01' Rt.  
End construction of 8" wide Reinforced Concrete Flume (6") with toewall adjacent to end section. See Detail, Sheet 6.

B.L. Sta. 26+46.18  
N = 1705735.53  
E = 1680706.59  
1/2" Iron Pipe in Thimble  
NW Cor. SW 1/4,  
Sec. 33, T-26S, R-2E.

Backfill behind wall as necessary for positive grade to channel.

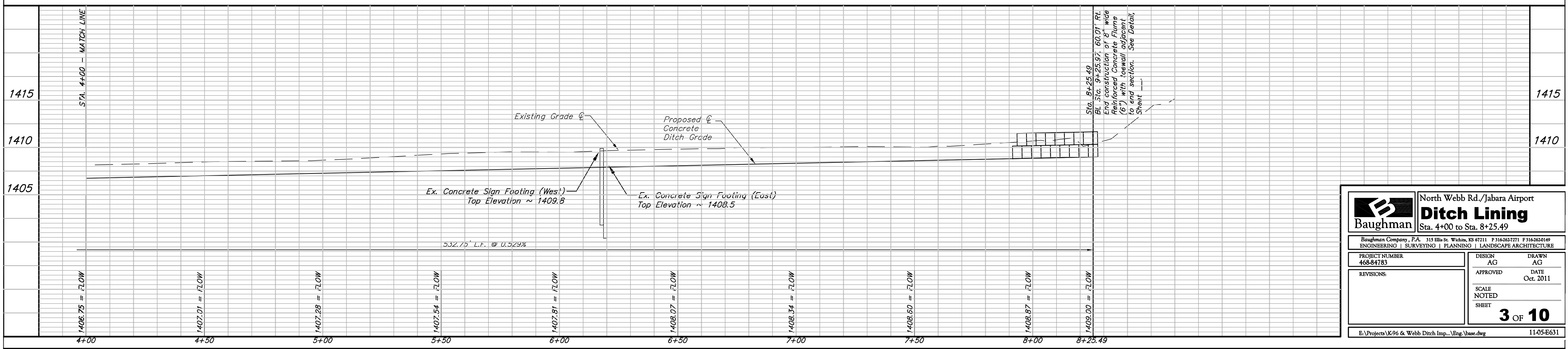
N = 1705735.53  
E = 1680706.59  
Sta. 8+00

Sta. 7+73 to Sta. 7+98, Rt. & Lt.  
Install 25' x 8' (23 SY ea., 46 SY total) WintersTurf Turf Reinforcement Mat. Trim as necessary to fit around block walls. Soil Fill and install per manufacturer's recommendations. All materials, labor, etc. to complete installation to be included in bid item, "BMP, Turf Reinforcement Mat."

Contractor shall over excavate any soft spots below the concrete flume, block wall, or reinforced concrete pavement and replace with suitable material compacted to 95% Std. Density. If on-site material is unsuitable for subgrade compaction, material shall be imported to provide adequate compaction. Cost of import material shall be incidental to reinforced concrete flume bid item.

Remove and Dispose of Existing Trees Only as Necessary For Construction. Cost to be Included in bid item, "Site Clearing."

Contractor shall remove and replace any concrete sidewalk panels damaged during construction. Cost to be Included in bid item, "Site Restoration."



		<b>North Webb Rd./Jabara Airport Ditch Lining</b> Sta. 4+00 to Sta. 8+25.49	
		Baughman Company, P.A. 315 Ellis St. Wichita, KS 67211 P 316-2627271 F 316-2620149 ENGINEERING   SURVEYING   PLANNING   LANDSCAPE ARCHITECTURE	
PROJECT NUMBER 468-84783	DESIGN AG	DRAWN AG	DATE Oct. 2011
REVISIONS:	APPROVED	SCALE NOTED	SHEET <b>3 OF 10</b>
E:\Projects\K96 & Webb Ditch Imp.\Eng. base.dwg			11-05-E631