

PAVING STREETS AND INCIDENTAL DRAINAGE
FOX RIDGE ADDITION

AN ADDITION TO THE CITY OF WICHITA
 SEDGWICK COUNTY, KANSAS

PROJECT NO. 472-83791
 JAMES L. ARMOUR, P.E. - CITY ENGINEER

OCA 766272

BRUSH CREEK CIRCLE AND BRUSH CREEK COURT:
 FROM THE NORTH LINE OF WESTLAKES PARKWAY TO AND INCLUDING THE
 CUL DE SAC, SERVING LOTS 147 THROUGH 173.
 WESTLAKES COURT: FROM THE NORTH LINE OF WESTLAKES PARKWAY TO
 AND INCLUDING THE CUL DE SAC, SERVING LOTS 174 THROUGH 190.

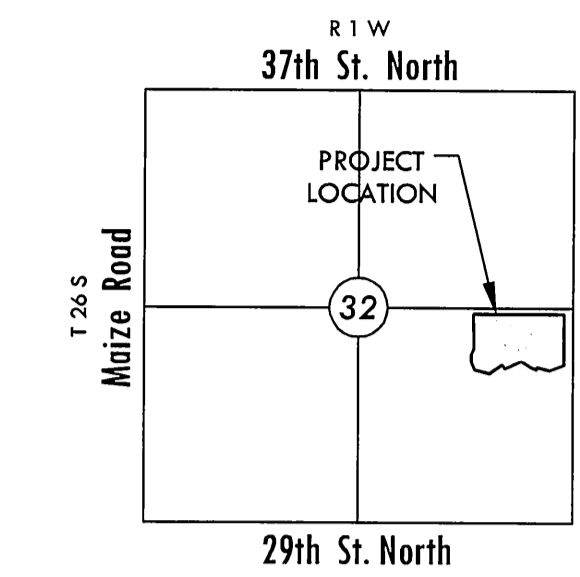
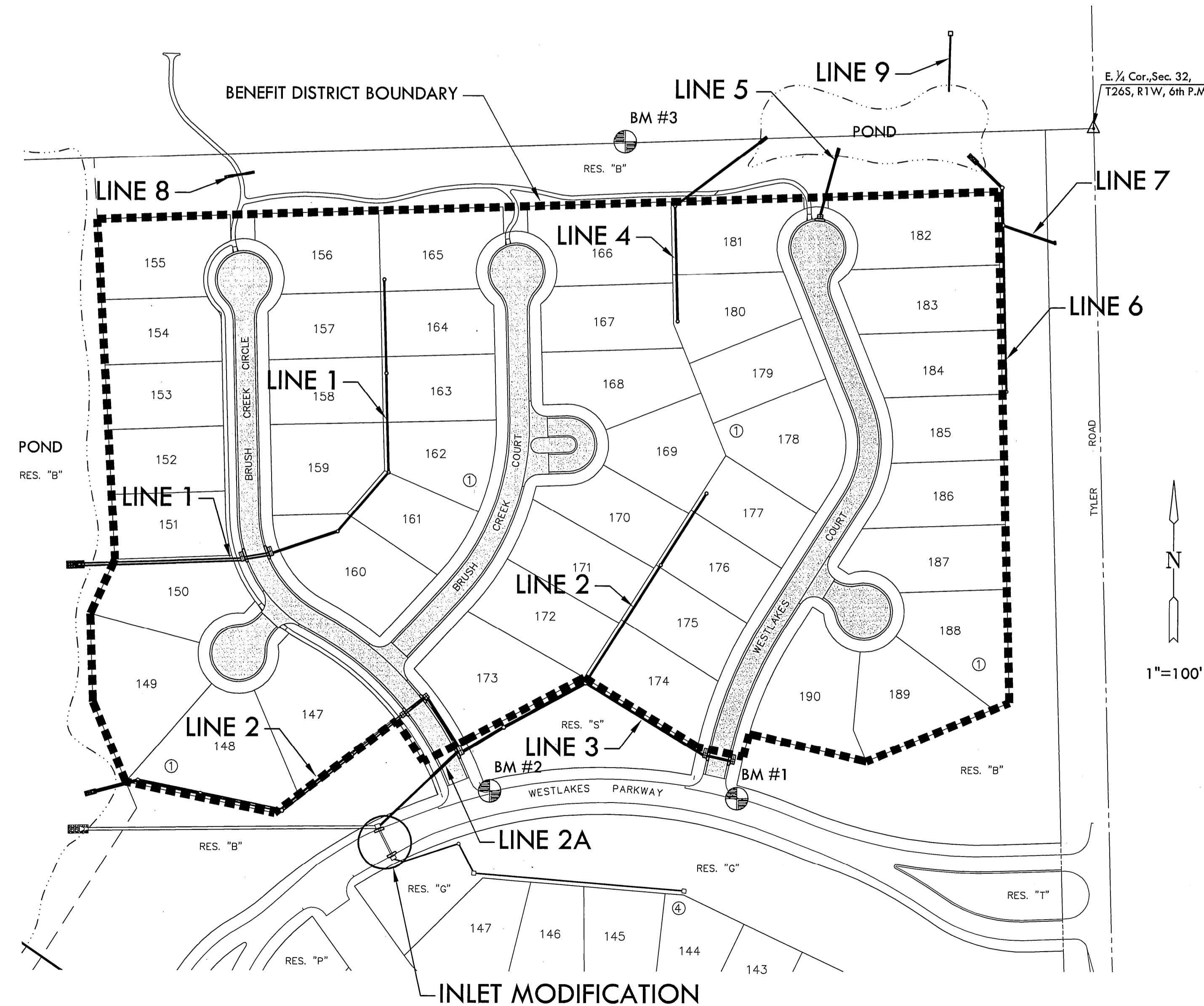
GENERAL NOTES

- UNLESS SHOWN OR STATED OTHERWISE ON THESE DRAWINGS, MATERIALS AND CONSTRUCTION SHALL BE IN ACCORDANCE WITH CITY OF WICHITA CONCRETE PAVEMENT AND ASPHALTIC CONCRETE PAVEMENT SPECIFICATIONS.
- CONTRACTOR WILL BE REQUIRED TO PROVIDE A MINIMUM ADVANCE NOTICE OF SEVENTY-TWO (72) HOURS TO UTILITY COMPANIES PRIOR TO STARTING ANY EXCAVATION AS FOLLOWS:
 KANSAS ONE-CALL 1-800-344-7233
 OR 687-2470 (LOCAL WICHITA)
 THE CONTRACTOR MUST NOTIFY THE FOLLOWING IN CASE OF AN EMERGENCY:
 SBC (TELEPHONE) 800-870-8390
 COX COMMUNICATIONS (CABLE) 262-0661
 WESTAR (ELECTRIC) 383-8600
 KANSAS GAS SERVICE (GAS) 832-3101
 CITY OF WICHITA WATER & SEWER MAINT. 262-6000
 BLACK HILLS ENERGY (GAS) 800-303-0357
- THE CONTRACTOR SHALL BE RESPONSIBLE FOR PRESERVING PROPERTY IRONS. THE CONTRACTOR WILL BE REQUIRED TO RE-ESTABLISH ANY PROPERTY IRONS WHICH ARE DAMAGED OR DESTROYED BY HIS CONSTRUCTION OPERATIONS. SUCH IRONS SHALL BE RE-ESTABLISHED BY A LICENSED LAND SURVEYOR IN ACCORDANCE WITH STATE LAWS.
- EXISTING UTILITIES AND THEIR LOCATIONS, AS SHOWN ON THE PLANS REPRESENT THE BEST INFORMATION OBTAINABLE FOR DESIGN. LOCATION INFORMATION HAS BEEN OBTAINED FROM THE VARIOUS UTILITY COMPANIES AND IS EITHER FROM COMPANY RECORD DRAWINGS OR COMPANY PROVIDED FIELD LOCATIONS. THE PLAN LOCATIONS SHOWN ARE NOT GUARANTEED. ADDITIONAL EXISTING UTILITIES MAY ALSO BE ENCOUNTERED.
- RUBBLE FROM THE REMOVAL OF MISCELLANEOUS STRUCTURES AND EXCESS EXCAVATION WHICH IS TO BE WASTED SHALL BE DISPOSED OF ON SITES TO BE PROVIDED BY THE CONTRACTOR. THESE SITES SHALL BE APPROVED BY THE ENGINEER AS TO SUITABILITY, APPEARANCE AND SITE LOCATION. LOCATIONS THAT, IN THE OPINION OF THE ENGINEER, WILL LEAVE AN UNSIGHTLY APPEARANCE WILL NOT BE APPROVED. ALL DISPOSAL SITES MUST BE APPROVED BY THE KANSAS DEPARTMENT OF HEALTH AND ENVIRONMENT. MATERIAL EITHER STOCKPILED OR DISPOSED OF IN A FLOOD PLAIN WOULD REQUIRE A KANSAS STATE BOARD OF AGRICULTURE PERMIT. ANY MATERIAL DUMPED IN WATERS OF THE UNITED STATES OR WETLANDS IS SUBJECT TO U.S. CORPS OF ENGINEERS PERMITTING REGULATIONS. ANY MATERIAL BURIED OR STOCKPILED BEYOND APPROVED CONSTRUCTION LIMITS WOULD REQUIRE ADDITIONAL ARCHAEOLOGICAL INVESTIGATIONS UNLESS BURIED IN A PREVIOUSLY APPROVED BORROW LOCATION.
- THIS PROJECT INCLUDES A CERTAIN AMOUNT OF ROLL TYPE CURB CONSTRUCTION. ROLL CURBS SHALL BE DEPRESSED THROUGH ALL DRIVEWAY OPENINGS WHEN SUCH DRIVES ARE CONSTRUCTED AS A PART OF THE PROJECT. NO MORE THAN 2 DRIVES 20 FEET IN WIDTH OR EQUIVALENT COMBINATIONS THEREOF ARE TO BE CONSTRUCTED WITH THIS PROJECT.
- TRANSITION CURB FROM FULL HEIGHT COMBINATION CURB AND GUTTER TO ROLL TYPE COMBINATION CURB AND GUTTER IS TO BE PAID AS BID FOR LINEAL FEET COMBINED CURB AND GUTTER (3 5/8" ROLL).
- A SAW CUT OF AT LEAST ONE-HALF THE DEPTH OF THE EXISTING SURFACE COURSES OR ONE-FOURTH THE DEPTH OF THE EXISTING TOTAL PAVEMENT THICKNESS SHALL BE PROVIDED AT LOCATIONS WHERE PROPOSED CONSTRUCTION ABUTS AN EXISTING SURFACE OR PAVEMENT FOR WHICH PARTIAL REMOVAL OF THAT SURFACE OR PAVEMENT IS REQUIRED. SAW JOINT TO FACILITATE REMOVAL WITHIN THREE (3) FEET OF EXISTING JOINTS WILL NOT BE PERMITTED AND FOR SUCH INSTANCES THE LIMITS OF REMOVAL SHALL EXTEND TO THE EXISTING JOINT. SUCH SAW CUTS WILL NOT BE PAID FOR DIRECTLY AND THIS COST SHALL BE CONSIDERED AS SUBSIDIARY TO THE REMOVAL OF SURFACE OR PAVEMENT.
- CONTRACTOR SHALL RESEED AND MULCH ALL DISTURBED AREAS. COST SHALL BE CONSIDERED SUBSIDIARY TO SITE RESTORATION.
- THE CONTRACTOR SHALL VERIFY LOCATION OF EXISTING SPRINKLER SYSTEM PRIOR TO CONSTRUCTION AND TAKE CARE TO PROTECT AND WORK AROUND SPRINKLER SYSTEM AS NEED TO INSTALL STORM SEWER LINES. ANY DAMAGE DONE DURING CONSTRUCTION WILL BE REPAIR IN LIKE KIND AT NO ADDITIONAL COST TO THE PROJECT.
- DEVELOPER FOR THIS PROJECT IS:
 FOX RIDGE DEVELOPMENT CO., INC.
 7926 WEST 21st ST
 WICHITA, KS 67205
 MARY SCHELLENBERG
 316-721-2153

EARTHWORK SUMMARY

EXCAVATION	32,200 C.Y.
COMPACTED FILL (95% Density)	27,400 C.Y.

NOTE:
 CONTRACTOR IS RESPONSIBLE FOR
 WASTING EXCESS MATERIAL OFFSITE.



VICINITY MAP
 No Scale

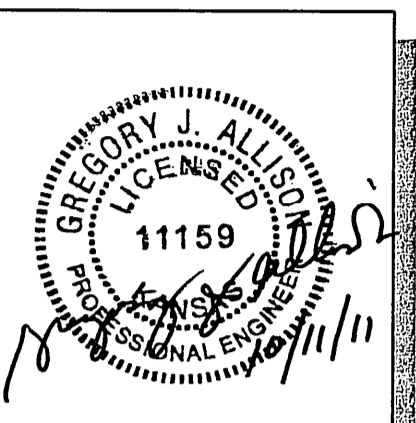
INDEX TO DRAWINGS

SHEET NO.	DESCRIPTION
1	TITLE SHEET
2	TYPICAL SECTIONS
3-8	PAVING DETAILS
9-10	GRADING PLAN
11-12	BRUSH CREEK CIRCLE
13-14	BRUSH CREEK COURT
15-16	WESTLAKES COURT
17	CUL-DE-SACS
18	SIDEWALK LAYOUT
19-24	STORM SEWER DETAILS
25-26	LINE 1
27-28	LINE 2
29	LINE 3
30	LINE 4 AND 5
31	LINE 6 AND 7
32	LINE 8 AND 9
33	INLET MODIFICATION
34	BUBBLE MAP
35	EROSION CONTROL
36	SEEDING NOTES
37-41	BMP DETAILS
42-55	CROSS SECTIONS
56	PLAT

BENCHMARKS

- BM #1 BRASS DISC AT SE RETURN OF FIRST DRIVE WEST OF TYLER ROAD ON TOP CURB AT THE NORTH SIDE WESTLAKES PARKWAY. ELEV.=1355.81 NAVD88
- BM #2 SQUARE CUT ON TOP CURB AT SE RETURN ON SECOND DRIVE WEST OF TYLER ROAD ON NORTH SIDE WESTLAKES PARKWAY, 5 FEET SOUTH OF FH. ELEV.=1353.61 NAVD88
- BM #3 RR SPIKE ON SOUTH SIDE OF "H" POLE FIRST SET OF "H" POLES WEST OF TYLER ROAD ON THE NORTH PROPERTY LINE OF FOX RIDGE WHICH IS 1/2 MILE NORTH OF 29TH ST. N. ELEV.=1364.56 NAVD88

MKEC
 ENGINEERING
 CONSULTANTS, INC.
 411 N. WEBB ROAD
 WICHITA, KS. 67206
 316-684-9600



PAVING & INCIDENTAL DRAINAGE PLANS
FOX RIDGE ADDITION
 PHASE 14

TITLE SHEET

SHEET TITLE
 472-83791
 PROJECT NUMBER

DFL / KKL / GJA
 DESIGNED DRAWN CHECKED

ISSUED
 October 2011

REVISED

SHEET NO.

1 of 56